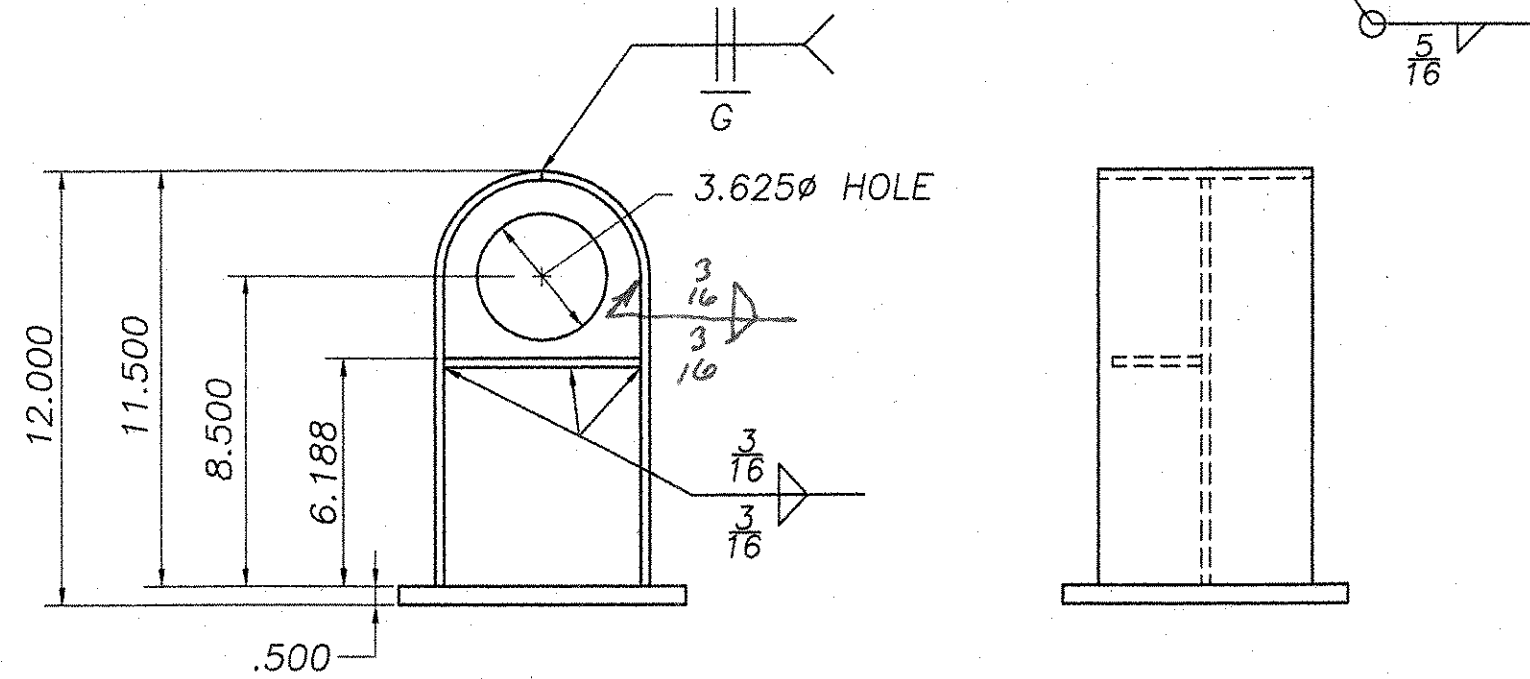
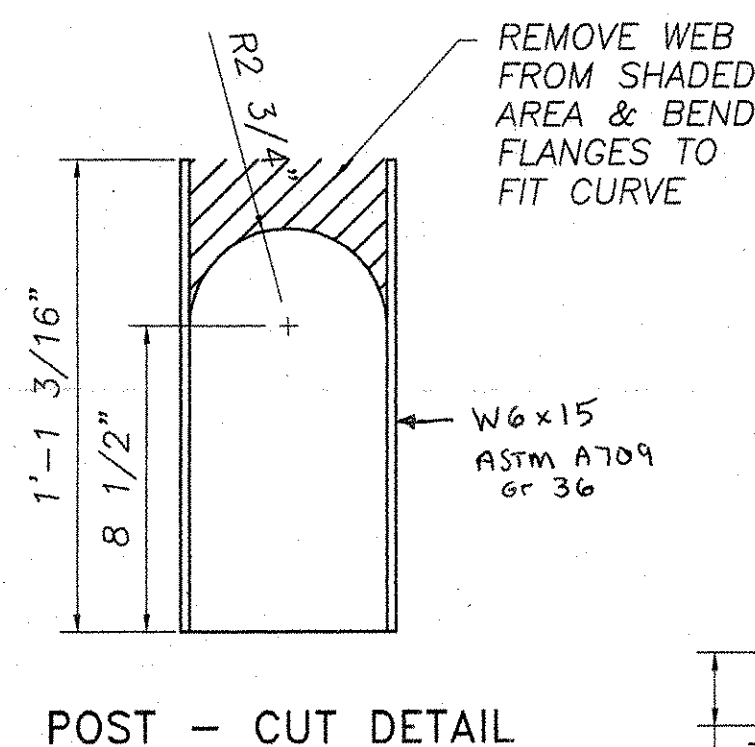


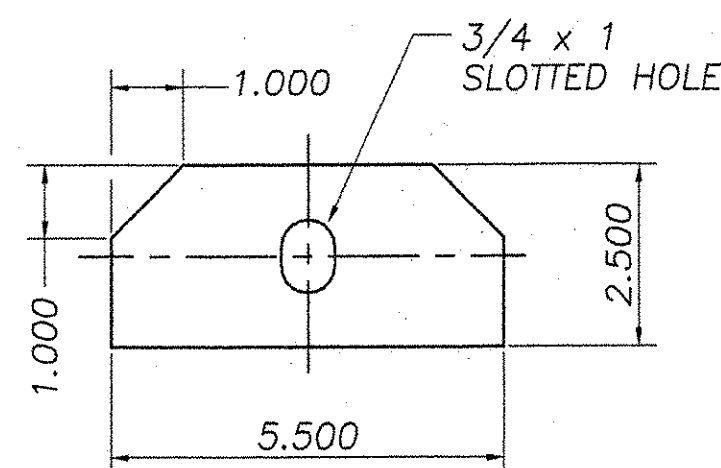
WELD RAIL CONNECTION PLATE
IN ONE SIDE OF POST



PEDESTAL POST DETAIL
MAKE: 16 pcs



POST - CUT DETAIL

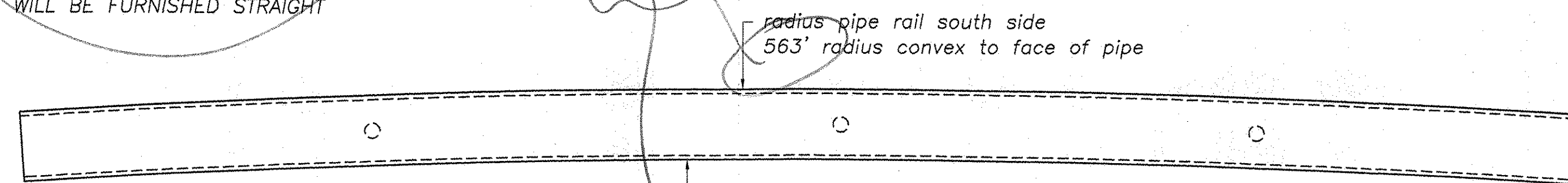


**1/4 x 2-1/2 x 5-1/2
RAIL CONNECTION PLATE
GR 36 STEEL (1.9#)**
MAKE: 16 pcs

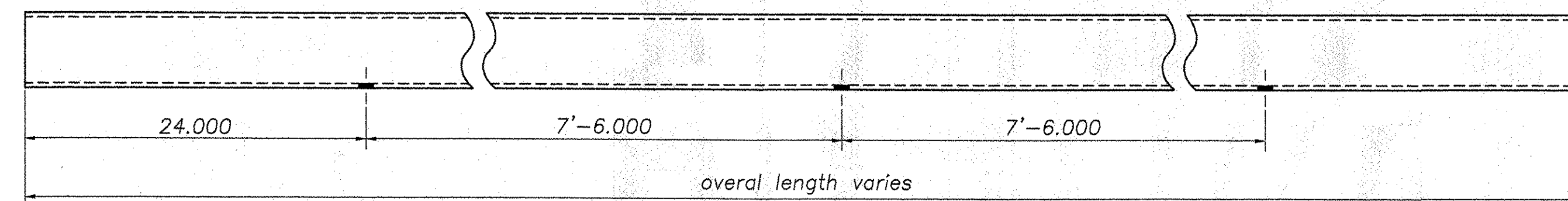
SHOP CURVE DATA	563' R	587' R
	RISE @ MIDPOINT	
19'-4.750" PIPE RAIL	1"	1"
14'-10.750" PIPE RAIL	5/8"	5/8"
5'-8.4375" TERMINAL	*1/16"	*1/16"

* RAILING TERMINAL SECTION TOO SHORT
TO OBTAIN EFFECTIVE RISE
WILL BE FURNISHED STRAIGHT

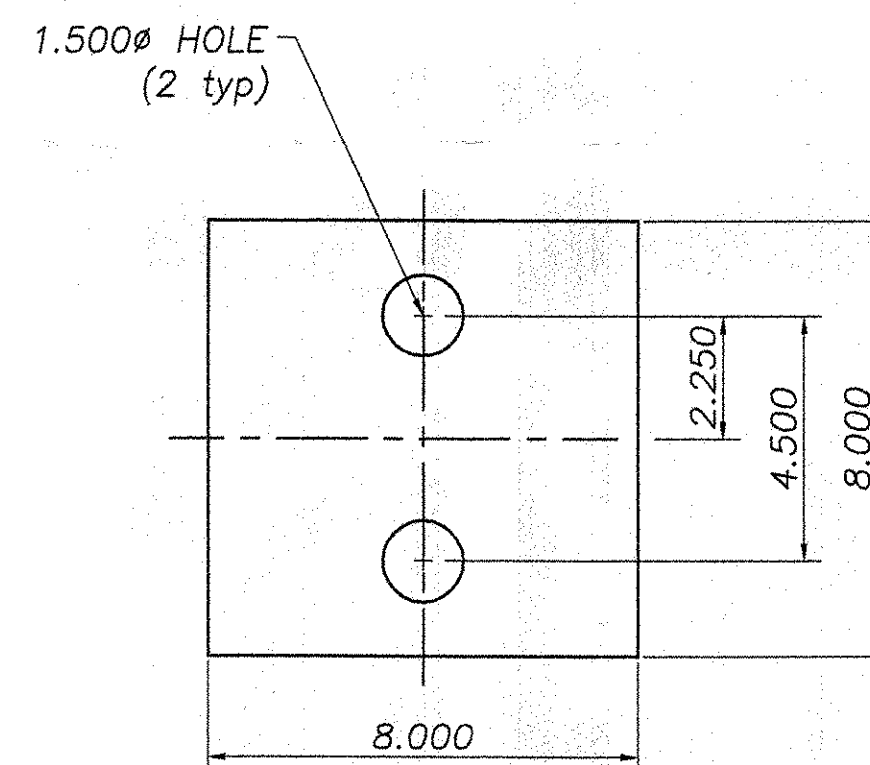
REVISE AS
REQUIRED



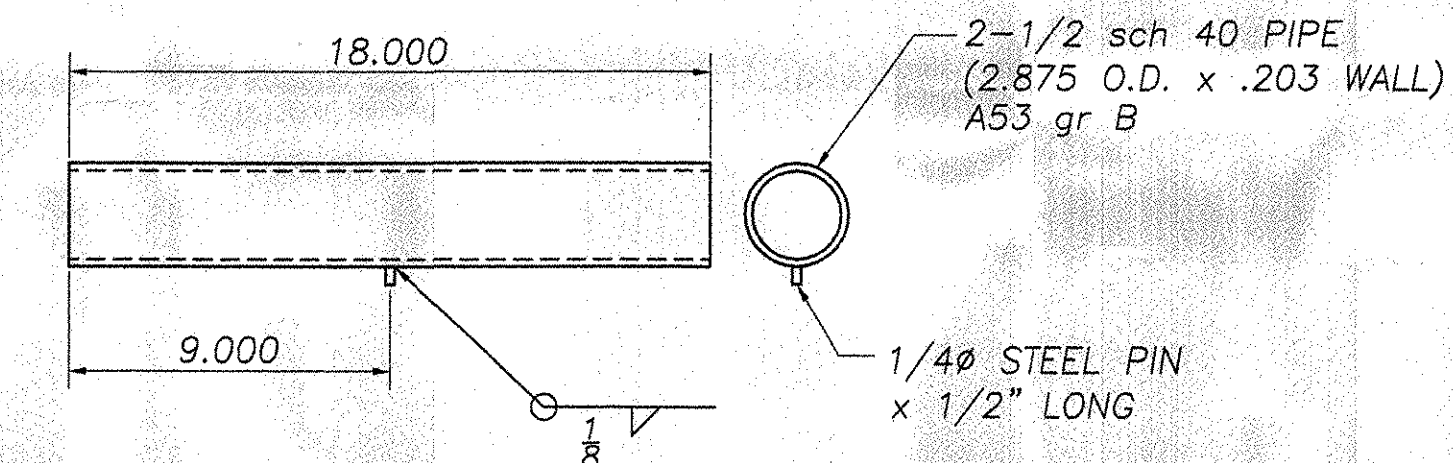
TOP VIEW SHOP CURVE DETAIL
with drain holes in opposite (bottom) face



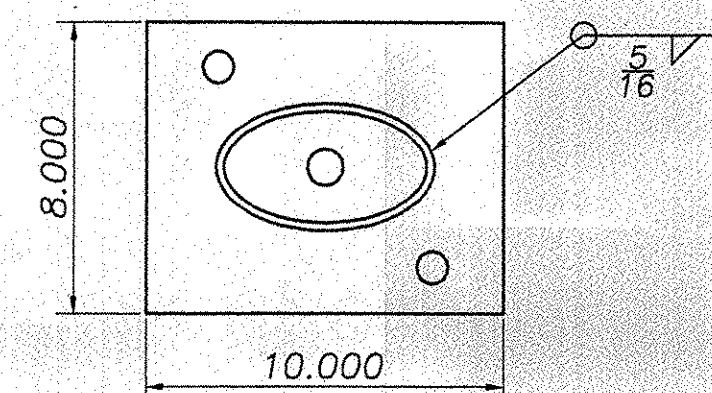
TYPICAL PIPE RAIL DETAIL



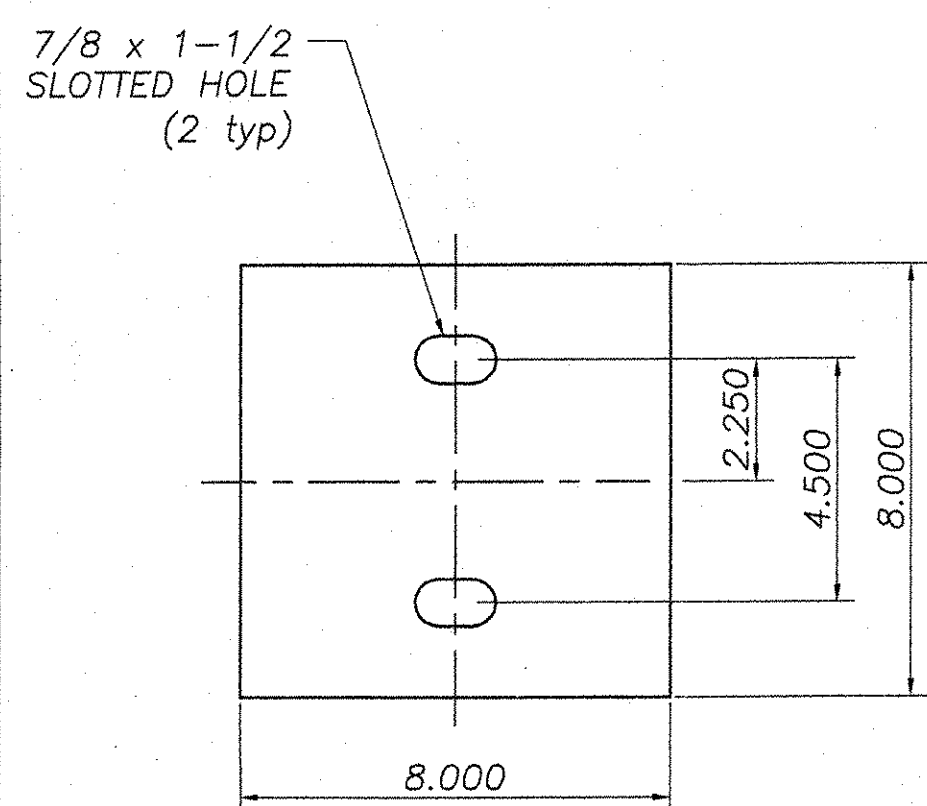
**1/8 x 8 x 8
POST BEARING PAD
80±10 DURO NEOPRENE**
MAKE: 16 pcs



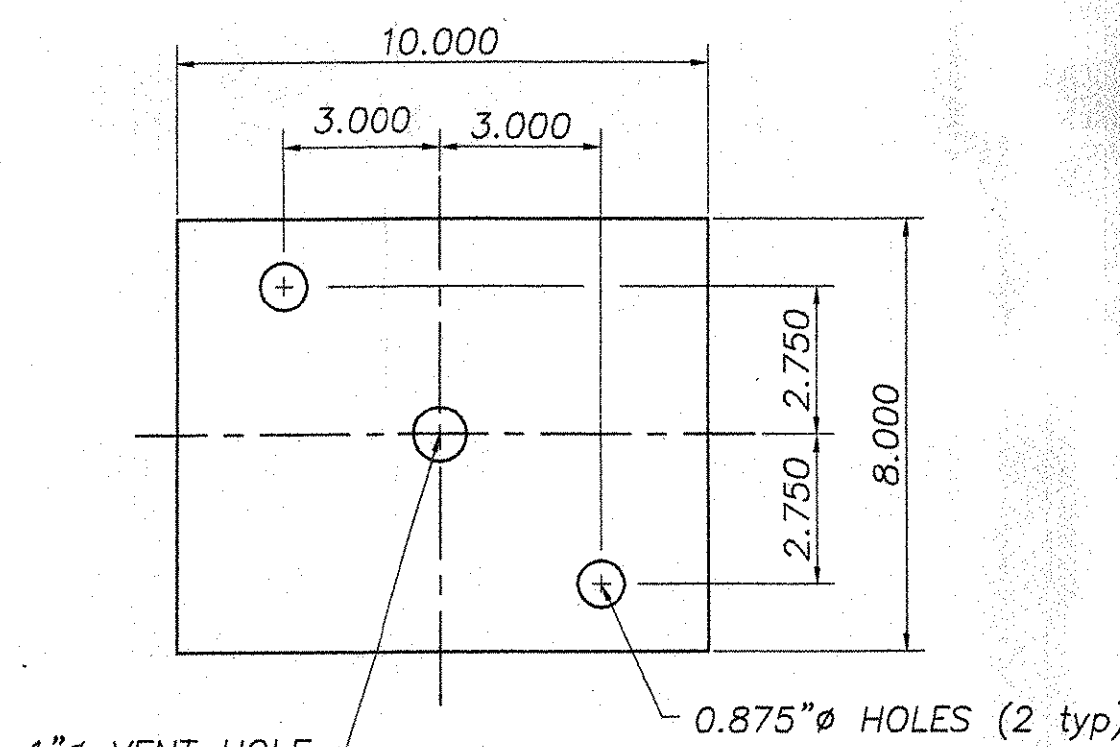
SPLICE SLEEVE DETAIL
MAKE: 8 pcs



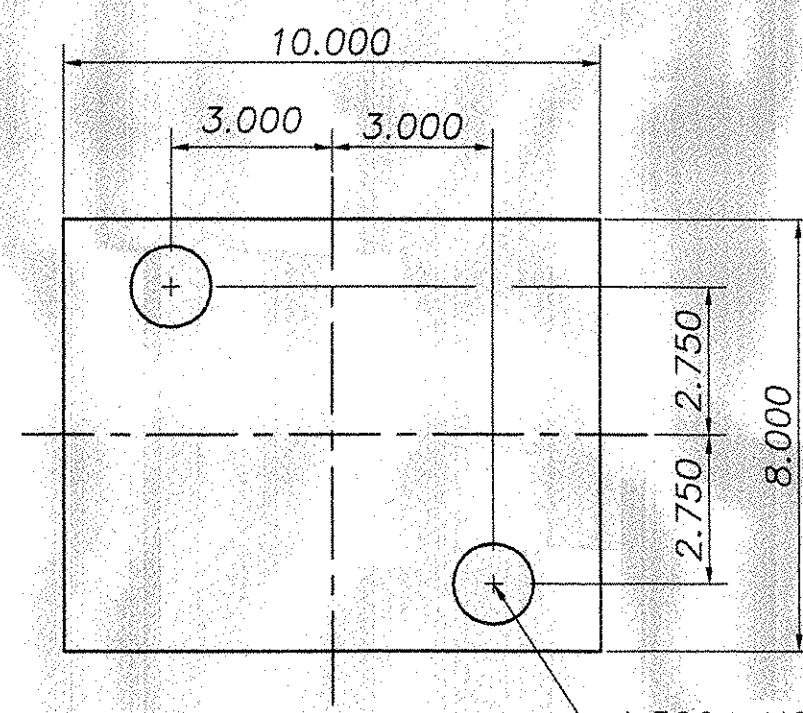
TERMINAL RAIL DETAIL
MAKE: 4 pcs



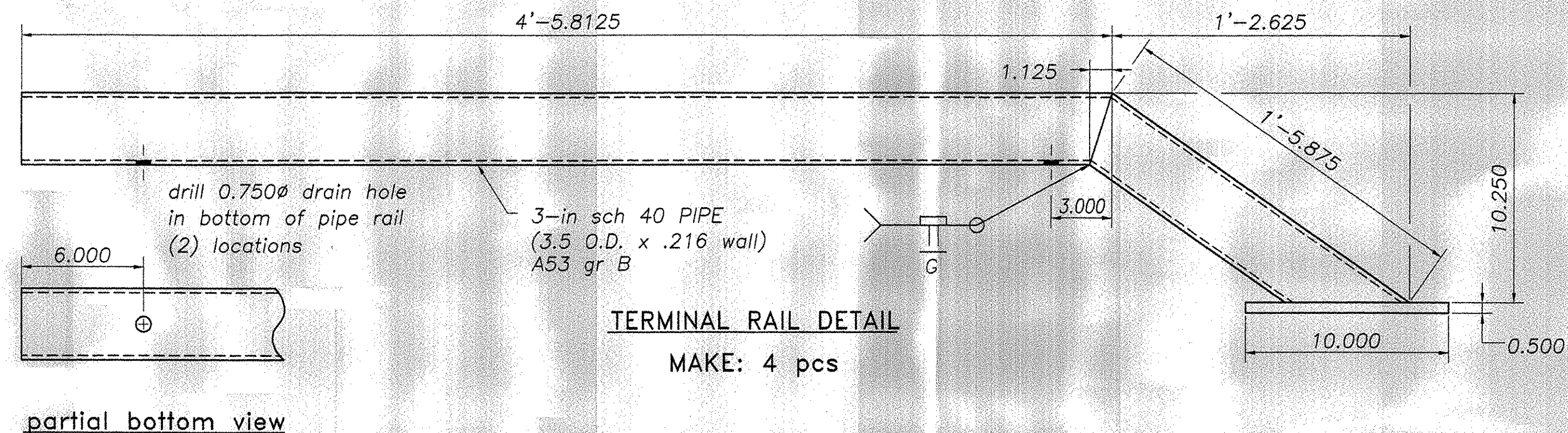
**1/2 x 8 x 8
POST BASE PLATE
GR 36 STEEL (9.1#)**
MAKE: 16 pcs



**1/2 x 8 x 10
TURNDOWN BASE PLATE
GR 36 STEEL (11.3#)**
MAKE: 4 pcs



**1/8 x 8 x 10
TURNDOWN BEARING PAD
80±10 DURO NEOPRENE**
MAKE: 4 pcs



partial bottom view

Revise as necessary

BILL OF MATERIAL		
Qty.	Description	Material
16	PEDESTAL POST	
16	W6 x 15 x 1'-1.1875"	A709 gr 36
16	PL 1/2 x 8 x 8	A709 gr 36
16	PL 1/2 x 2-1/2 x 5-1/2	A709 gr 36
4	TERMINAL RAIL TURNDOWN	
4	PIPE 3-in SCH 40 x 4'-5.8125	A53 gr B
4	PIPE 3-in SCH 40 x 1'-5.875	A53 gr B
4	PL 1/2 x 8 x 10	A709 gr 36
8	SPLICE SLEEVE	
8	PIPE 2.5-in SCH 40 x 18.000	A53 gr B
8	1/4" ROUND ROD x 1/2" LONG	A709 gr 36
4	PIPE 3-in SCH 40 x 14'-10.750 (SHOP CURVED)	A53 gr B
2	PIPE 3-in SCH 40 x 19'-4.750 (SHOP CURVED)	A53 gr B
16	1/8 x 8 x 8 NEOPRENE/FABRIC BEARING PAD	80±10 DURO
4	1/8 x 8 x 10 NEOPRENE/FABRIC BEARING PAD	80±10 DURO
16	3/8 x 3-1/4 T-ANCHOR TOGGLE-BOLT	ZINC-PLATED
16	3/8 HEX NUT	A563 gr A
32	3/8 LARGE FLAT WASHER	F844

STAINLESS STEEL POST PLATE ANCHORS PROVIDED BY OTHERS

Reviewed
 Rejected
 Furnish as Corrected
 Revise and Resubmit
 Submit Specified Item

This review is only for general conformance with the design concept and the information given in the Construction Documents. Corrections or comments made on the shop drawings listing this review do not relieve the contractor from compliance with the requirements of the plans and specifications. Review of a specific item shall not include review of an assembly of which the item is a component. The Contractor is responsible for dimensions to be confirmed and coordinated at the fabricator. Information that pertains safety to the fabrication process or to the means, methods, techniques, sequences and procedures of construction, coordination of the Work with that of all other trades and performing all Work in a safe and satisfactory manner.

McFarland-Johnson, Inc.
Date: 8/6/07
By: Steven J. Deha

REVISIONS		
No.	Remarks	Date
0	Initial submittal	

HIGHWAY SAFETY CORP.
GLASTONBURY, CT

ITEM 525.15 METAL HANDRAILING (PAINTED BLACK)
BROOK ROAD (TH1) BRIDGE #7
OVER FREEMAN BROOK
TOWN OF WARREN, WASHINGTON COUNTY
BHF 0188(7)

DRAWN: p. radice
CHECKED: [Signature]
DATE: 07-13-07
SCALE: none
HSR REFERENCE NO.: 1600
GENERAL CONTRACTOR: [Blank]
SUB CONTRACTOR: F. R. LAFAYETTE
SIZE: D REVISION: 0
SHEET NO.: 2 of 2

