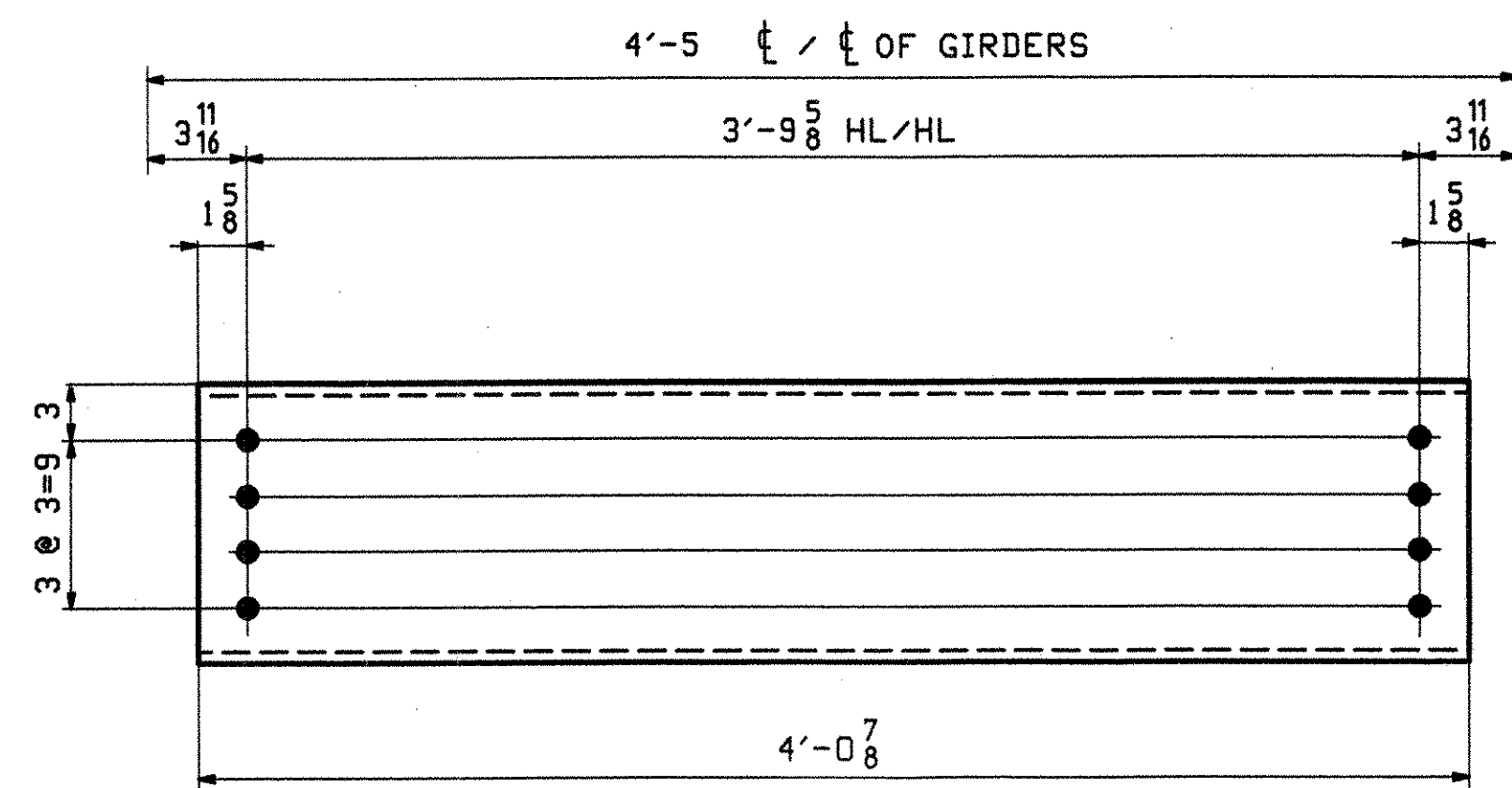
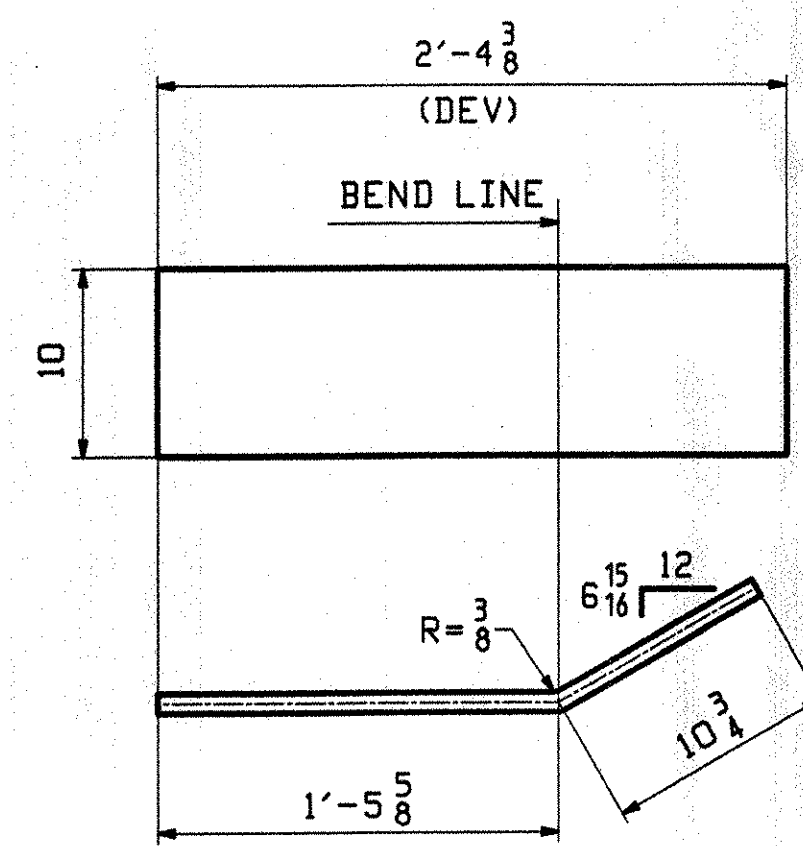


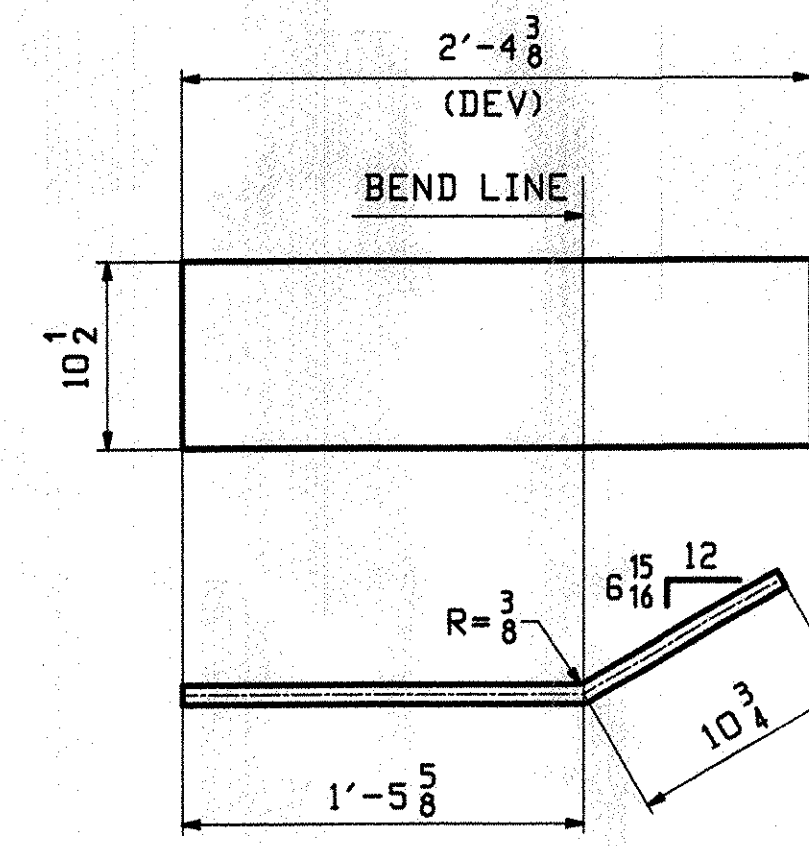
ABM INFO		SHIP	BILL OF MATERIAL				JOB NO.	DRAWING NO.	REV.
PAGE	LINE	MARK	QTY	MARK	MATERIAL	LENGTH FT INCHES	REMARKS	NT	PROCUREMENT NOTES
2	F		15	4D1	C 15x33.9	4 0 7/8	(M270-50)		
2	G		6	4D2	W 10x33	5 0 7/8	(M270-50)		
2	J		5	4E1	PL 1/4x10	2 4 3/8	(M270-36)		
2	L		5	4E2	PL 1/4x10 1/2	2 4 3/8	(M270-36)		
2	J		1	4E3	PL 1/4x10	2 0 3/8	(M270-36)		
2	K		1	4E4	PL 1/4x10 1/2	3 3 1/8	(M270-36)		



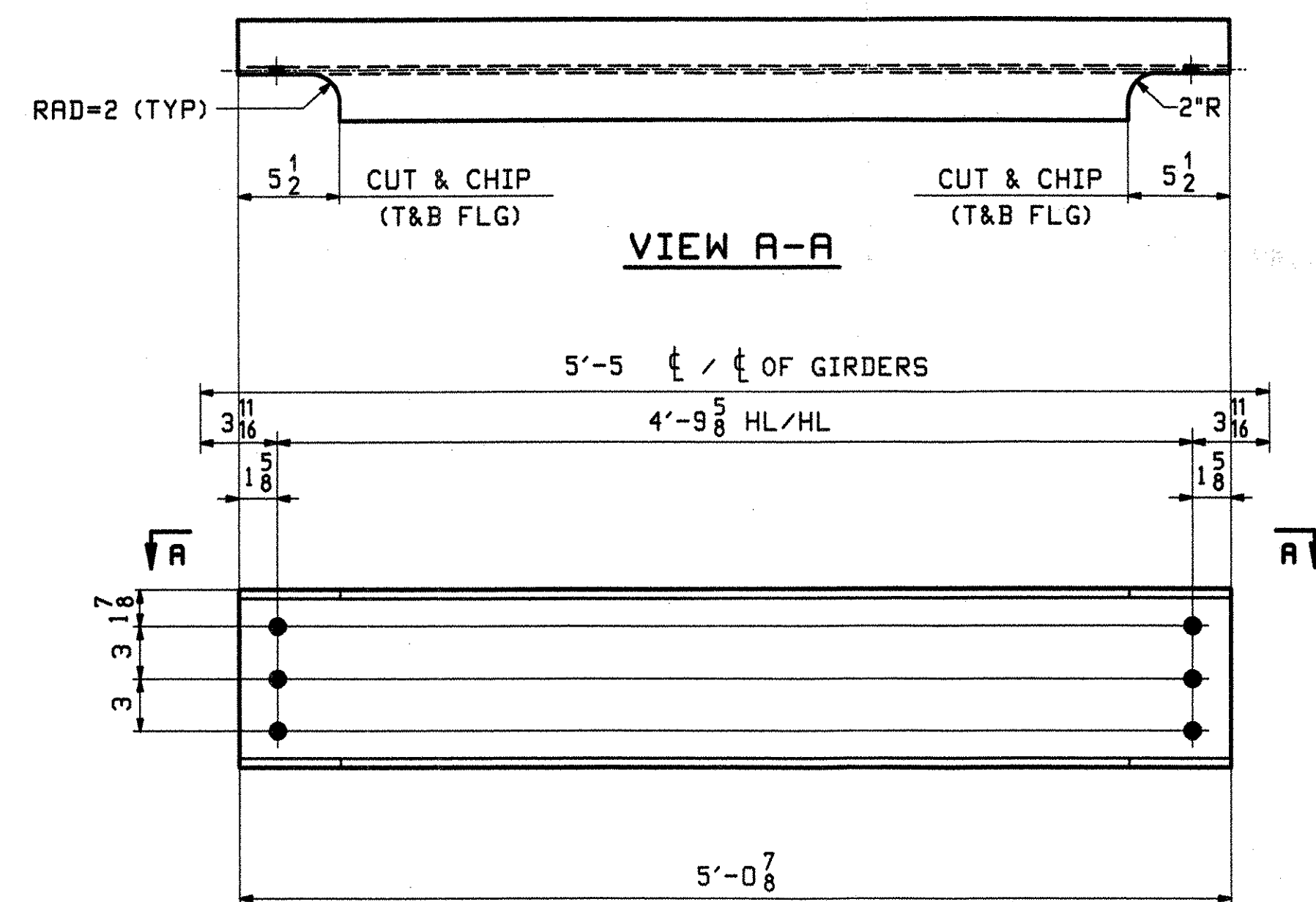
15 ~ INT. DIAPHRAGMS - 4D1



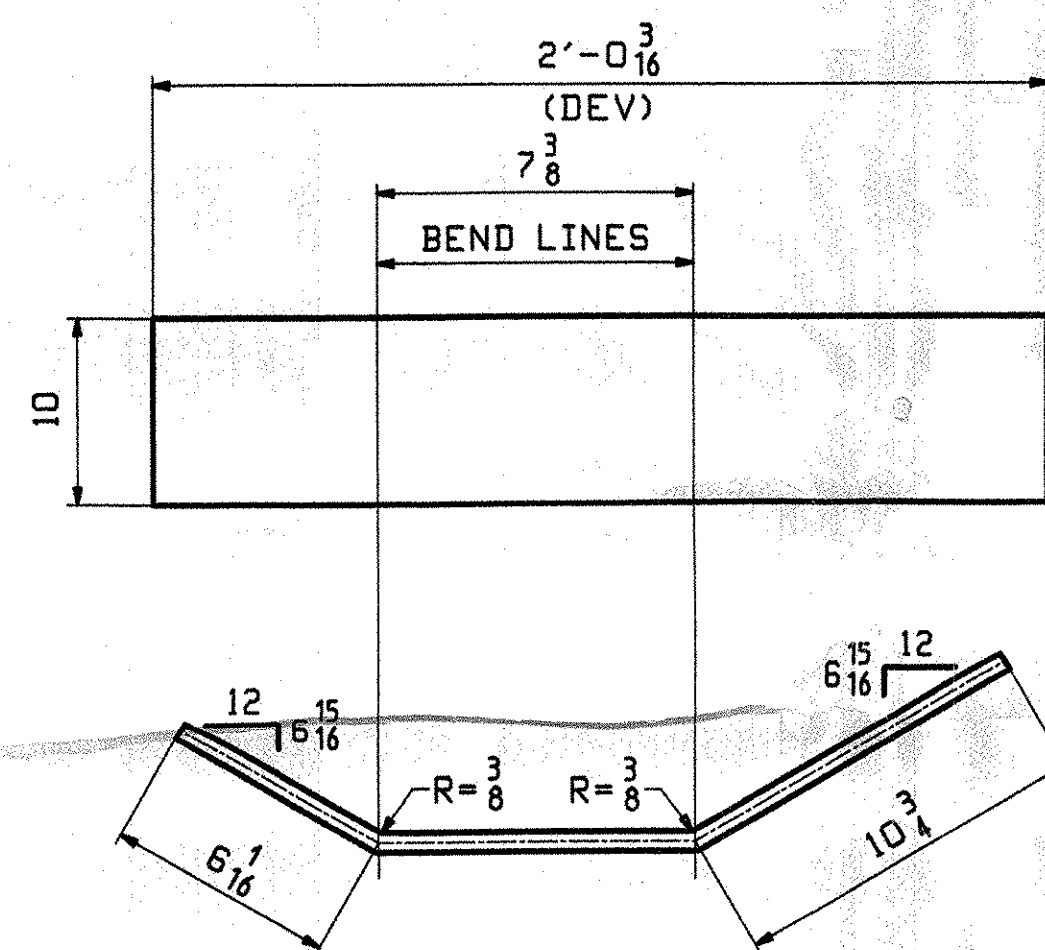
5 ~ ABUT END PLATES ~ 4E1
(GALV. AFTER FAB.)



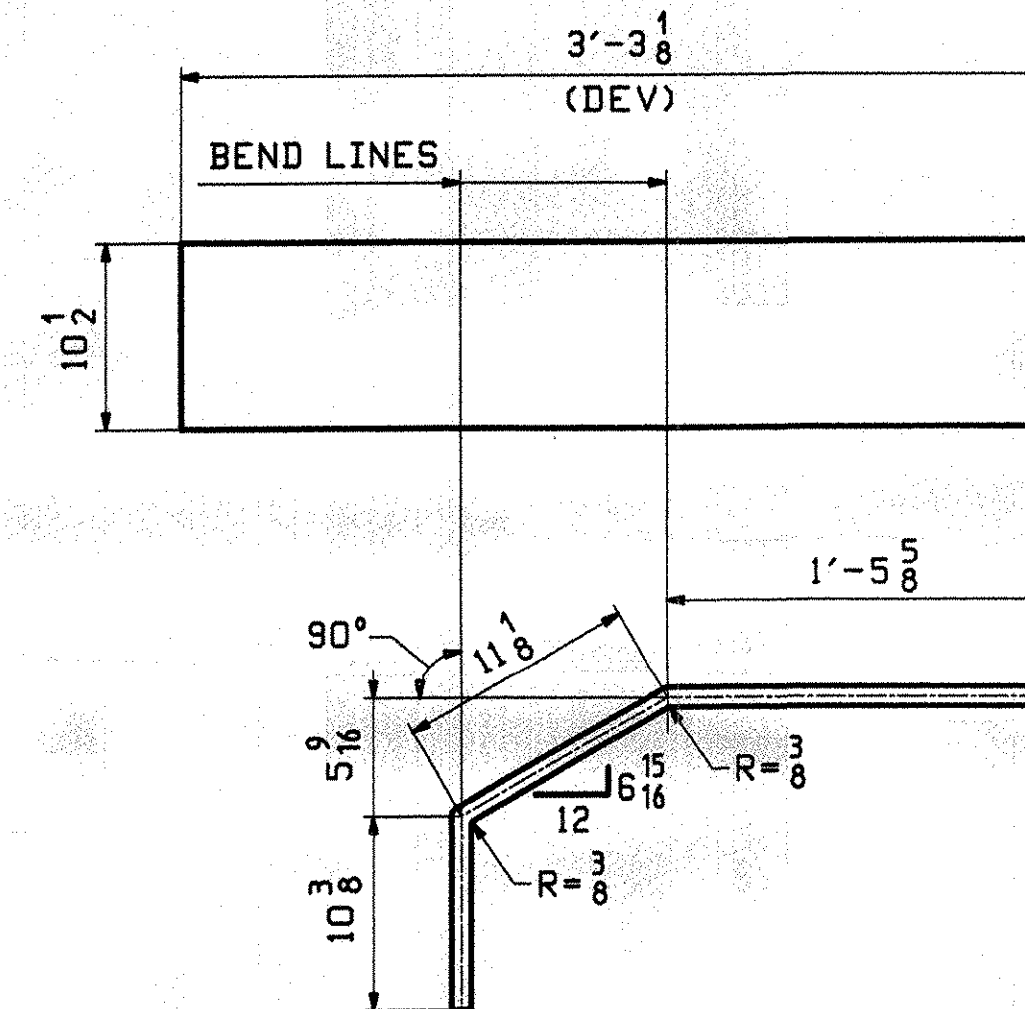
5 ~ ABUT END PLATES ~ 4E2
(GALV. AFTER FAB.)



6 ~ UTILITY DIAPHRAGMS - 7D2



1 ~ ABUT END PLATE ~ 4E3
(GALV. AFTER FAB.)



1 ~ ABUT END PLATE ~ 4E4
(GALV. AFTER FAB.)

RECEIVED
 OK'D BY _____ OK'D BY _____
 JUL 16 2007
 RESUBMIT _____ APPROVED _____
 BY _____ DATE _____

NOTES:

1. FOR GENERAL NOTES SEE DWG GNL.

OUT FOR APPROVAL	7-2-07								
OUT FOR APPROVAL									
ISSUED TO SHOP									
FIELD & OFFICE									

REV.	REMARKS	DATE	DWN	CHK	APP	Q.R.	NO.	DIA.	LGT	TYPE	WASHER
MATERIAL:	M270 50 U.N.	ELECTRODES:				HOLES:					SHOP BOLTS:
											NONE

SURFACE PREP. & PAINT:

DESCRIPTION:	DIAPHRAGMS & END PLATES	DRAWN BY	DATE
JOB:	BROOK ROAD OVER FREEMAN BROOK	EEO	06/11/07
	BIRDGE NO. 7	CHKD BY	
	WARREN, VT. (COUNTY OF WASHINGTON)	ELC	06/12/07
PROJ NO.	BHF 0188(7)	APPROV BY	
		SUPERVISOR	M. J. GATTI

CUSTOMER:	BLOW & COTE	PROJ NO.	DRG. NO.
	CASCO BAY STEEL STRUCTURES, INC.	324	4
	75 SPRING HILL ROAD SACO, MAINE 04072	0555\$	REV. Δ
	PHONE (207) 282-7360 FAX. (207) 282-1179		

- Reviewed
- Furnish as Corrected
- Revised and Resubmit
- Submit Specified Item
- Rejected

This review is only for general conformance with the design concept and the information given in the Construction Documents. Corrections or comments made on the drawings during this review do not release the contractor from compliance with the requirements of the plans and specifications. Review of a specific item shall not constitute review of an entirety of which the item is a component. The Contractor is responsible for dimensions to be confirmed and corrected in the fabricator. Information that pertains solely to the fabrication process or to the manufacturer's techniques, sequences and procedures of an industry, coordination of the work with that of all other trades and performing all work in a safe and satisfactory manner.

McFarland-Johnson, Inc.
 Date: 7-11-07
 By: Steven J. DeLia