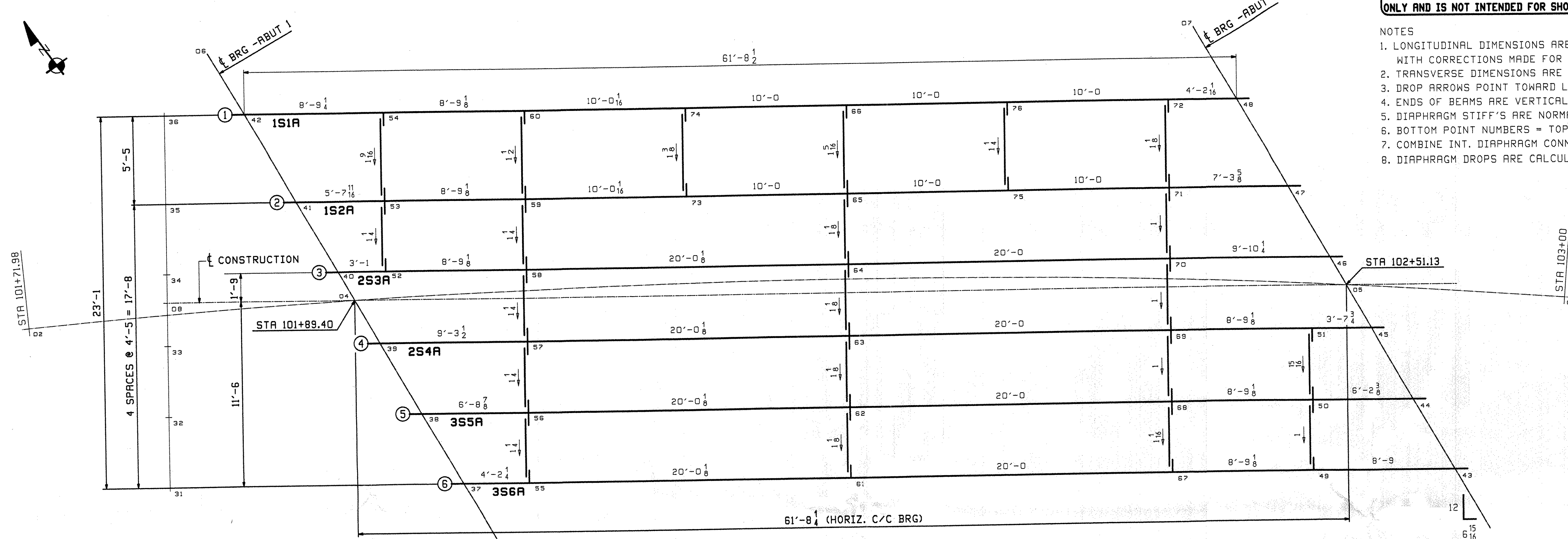


**\*\* NOTE \*\***  
**THE PURPOSE OF THIS DRAWING IS TO COORDINATE GEOMETRIC CONTROL INFORMATION. THIS DMG IS SUBMITTED FOR INFORMATION ONLY AND IS NOT INTENDED FOR SHOP FABRICATION.**

- NOTES
1. LONGITUDINAL DIMENSIONS ARE SLOPING ALONG BOTTOM OF BEAMS. WITH CORRECTIONS MADE FOR VERT CURVE, GRADE & DL CAMBER (UN).
  2. TRANSVERSE DIMENSIONS ARE IN A HORIZONTAL PLANE (UN).
  3. DROP ARROWS POINT TOWARD LOW END OF MEMBER.
  4. ENDS OF BEAMS ARE VERTICAL AFTER DL ROTATION.
  5. DIAPHRAGM STIFF'S ARE NORMAL TO GRADE.
  6. BOTTOM POINT NUMBERS = TOP POINT NUMBERS + 100
  7. COMBINE INT. DIAPHRAGM CONN. FOR DIFF. IN DROPS OF  $\pm \frac{1}{8}$ .
  8. DIAPHRAGM DROPS ARE CALCULATED IN THEIR FINAL POSITION.



GRADE		
LINE	ABUT 1	ABUT 2
1	.0415	.0314
2	.0416	.0315
3	.0416	.0315
4	.0416	.0315
5	.0416	.0315
6	.0416	.0314

**CALCULATION PLAN**

RECEIVED  
 C/D BY: \_\_\_\_\_  
 JUL 16 2007  
 RESUBMIT: \_\_\_\_\_  
 BY: \_\_\_\_\_  
 DATE: \_\_\_\_\_

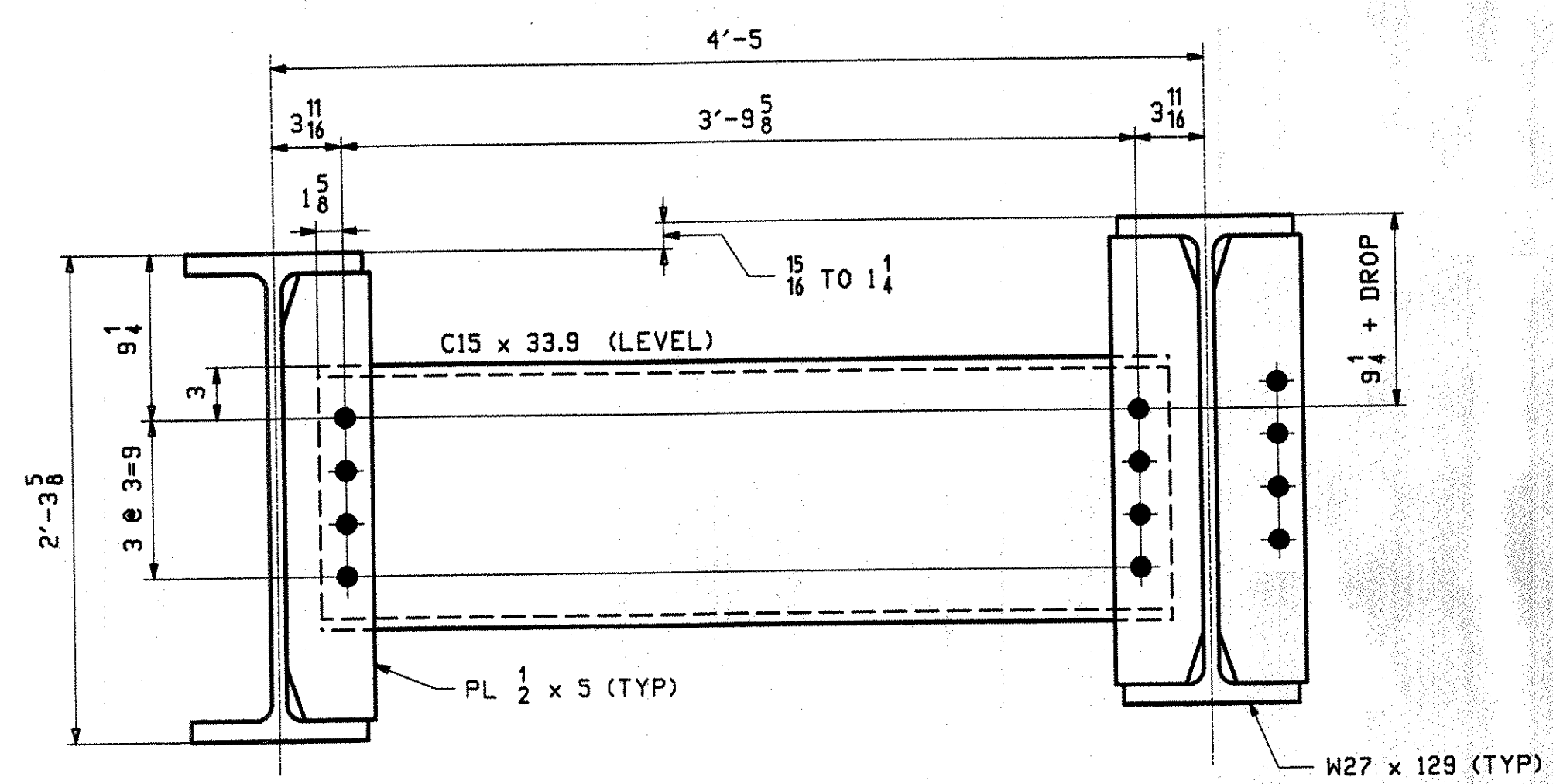
OUT FOR APPROVAL	7-2-07								
ISSUED TO SHOP									
FIELD & OFFICE									

REV.	REMARKS	DATE	DWN	CHK	APP	Q.A.	NO.	DIA.	LGT	TYPE	WASHER
MATERIAL:	M270-50										
ELECTRODES:											
HOLES:	15 $\frac{1}{16}$ (UN)										
SHOP BOLTS:											

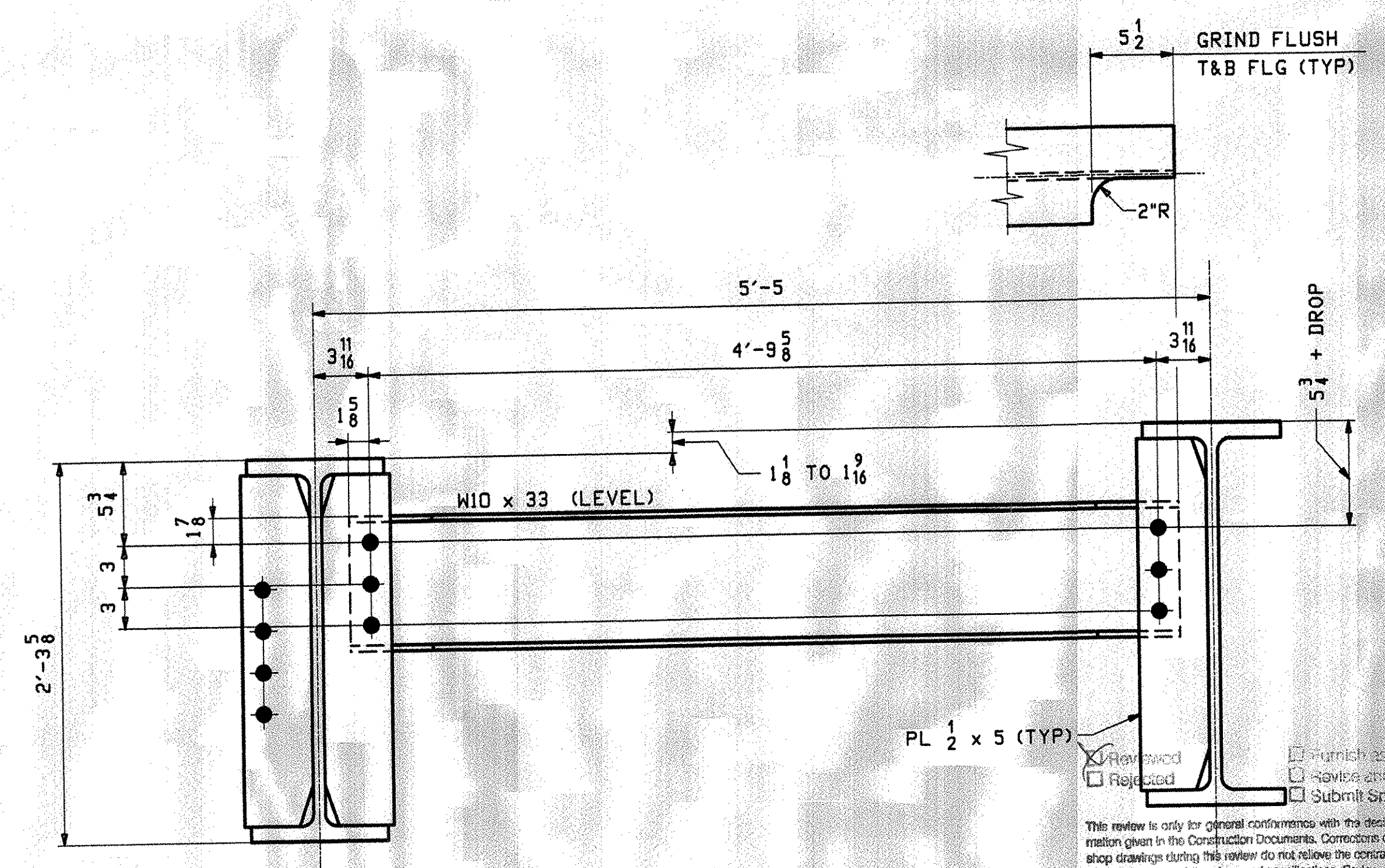
SURFACE PREP. & PAINT:

DESCRIPTION:	CALCULATION PLAN & LAYOUTS	DRAWN BY	EEO	DATE	5/22/07
JOB:	BROOK ROAD OVER FREEMAN BROOK	CHKD BY	ELC	DATE	6/05/07
	BIRDGE NO. 7	APPROV BY			
	WARREN, VT. (COUNTY OF WASHINGTON)	SUPERVISOR	M. J. GATTI		
PROJ NO.	BHF 0188(?)	Q.A.			
CUSTOMER:	BLOW & COTE				

CASCO BAY STEEL STRUCTURES, INC.  
 75 SPRING HILL ROAD SACO, MAINE 04072  
 PHONE (207) 282-7360 FAX. (207) 282-1179



**TYP. INT DIAPHRAGM**  
 LOOKING BACK STATION



**UTILITY BAY DIAPHRAGM**  
 LOOKING BACK STATION

This review is only for general conformity with the design concept and the information given in the Construction Documents. Corrections or comments made on the shop drawings during this review do not relieve the contractor from compliance with the requirements of the plans and specifications. Review of a specific item shall not include review of an assembly of which the item is a component. The Contractor is responsible for: dimensions to be confirmed and corrected at the job site; information that pertains solely to the fabrication process or to the erection, multiple techniques, sequence and production of construction; coordination of the Work with that of all other trades and performing all Work in a safe and satisfactory manner.

McFarland-Johnson, Inc.  
 Date: 7-11-07  
 By: *Shawn J. DeLia*