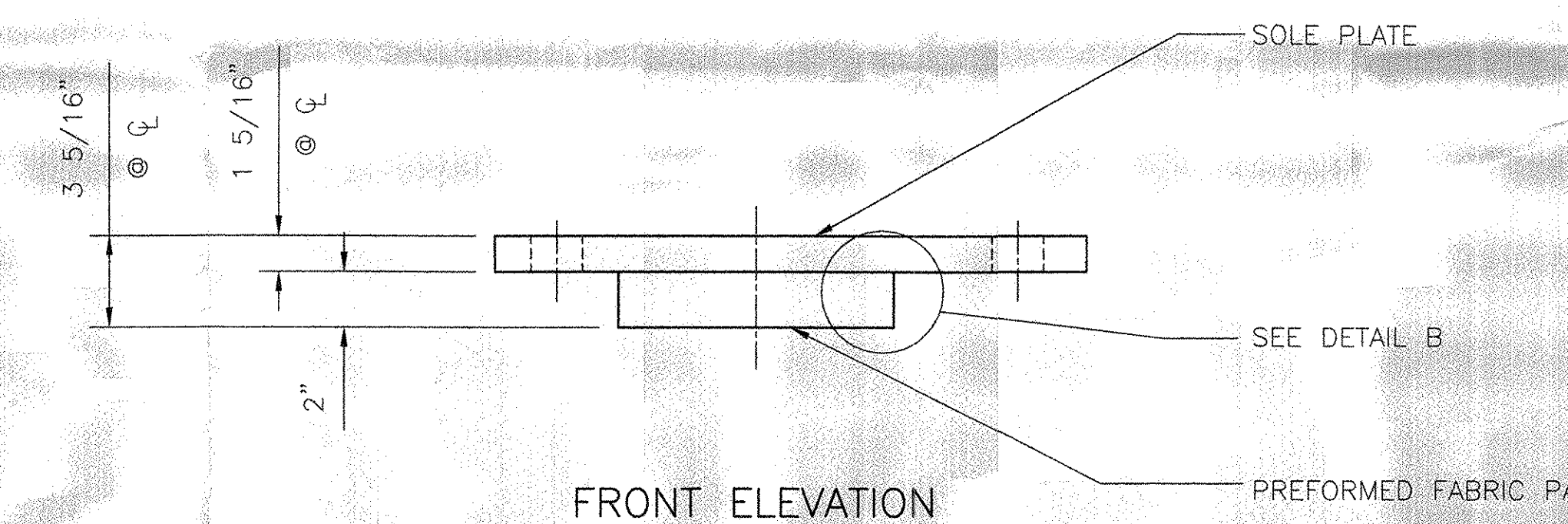


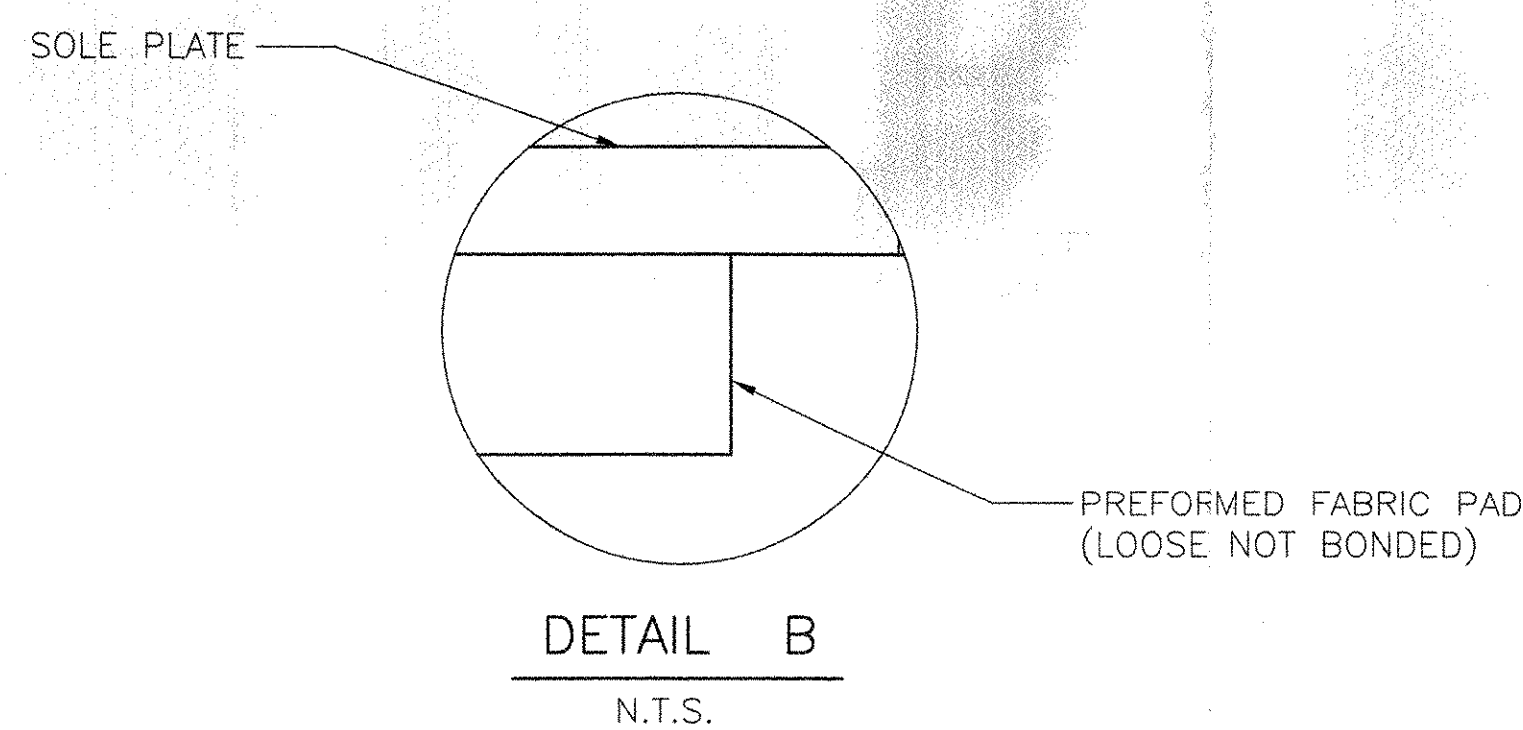
COSMEC FIXED PREFORMED FABRIC PAD BEARING

LOCATION - ABUTMENT NO. 1, BEAMS 1, 3, 4, 5 & 6  
TOTAL VERTICAL CAPACITY - 95 KIPS  
TOTAL QUANTITY - 5



COSMEC FIXED PREFORMED FABRIC PAD BEARING

LOCATION - ABUTMENT NO. 1, BEAM 2  
TOTAL VERTICAL CAPACITY - 95 KIPS  
TOTAL QUANTITY - 1



SEE DRAWING NUMBER 5281 FOR ANCHOR BOLT DETAILS

BEARING MATERIALS:

1. STEEL - ASTM A.709 GR. 36 ZINC METALLIZED.
2. PREFORMED FABRIC PAD - AASHTO DIV. II, SPECIFICATION 18.4.9.1
3. STAINLESS STEEL - ASTM A.240 TYPE 304, NO. 8 MIRROR FINISH
4. PTFE - ASTM D.4894 VIRGIN UNFILLED
5. ANCHOR BOLTS AND HARDWARE - SEE ANCHOR BOLT DETAIL

BEARING NOTES:

1. LOCATION OF FABRICATION: 70 SOUTH STREET WALPOLE, MA 02081
2. COSMEC, INC, REPRESENTATIVE: MR. MATT McANDREWS (508)-668-6600
3. ALL STEEL BEARING SURFACES SHALL BE ZINC METALLIZED AS PER SUBSECTIONS 531.04(b) AND 506.15(c) OR (b). BEARINGS SHALL BE SEALED WITH AN APPROVED SEALER AS SPECIFIED IN STANDARD SPECIFICATION SUBSECTION 506.15(b). AREAS OF METALLIZING DAMAGED BY FIELD WELDING OR HANDLING SHALL BE PAINTED WITH AN APPROVED SEALANT, IN ACCORDANCE WITH SUPPLEMENTAL SPECIFICATION 513.06(f).
4. DESIGN CRITERIA:
  - A. AVERAGE BEARING PRESSURE = 1000 PSI MAX.
  - B. ROTATION LIMIT - 0.015 RADIAN
  - C. HORIZONTAL CAPACITY SHALL BE 10% OF THE VERTICAL DESIGN LOAD (WITH IMPACT)
  - D. DESIGN LOAD PER BEARING = 95 KIPS ( DEAD LOAD PLUS LIVE LOAD WITH IMPACT)
5. BEARINGS SHALL CONFORM TO APPLICABLE SUBSECTIONS OF SECTIONS 531 AND 731 OF VAOT STANDARD SPECIFICATIONS.
6. FOR BEARINGS SETTING DIMENSIONS DUE TO TEMPERATURE SEE CONTRACT DRAWING SHEET 23 OF 36.

- Reviewed  
 Rejected
- Furnish as Corrected  
 Revise and Resubmit  
 Submit Specified Item

This review is only for general conformance with the design concept and the information given in the Construction Documents. Consideration or comments made on the drawings during the review do not relieve the contractor from compliance with the requirements of the plans and specifications. Review of a specific item shall not constitute an approval of that item. The Contractor is responsible for the accuracy of the information provided to the reviewer. Information is not to be used for any other purpose without the written consent of the reviewer.

McFarland-Johnson, Inc.  
Date: 7-23-07  
By: Steven J. Delia

BRIDGE NUMBER: 7

STATE OF VERMONT  
AGENCY OF TRANSPORTATION  
PROJECT NO. BHF-0188(7)  
PROJECT NAME: WARREN  
TOWN OF WARREN  
COUNTY OF WASHINGTON  
HIGHWAY NO. TH 1  
BROOK ROAD OVER FREEMAN BROOK

COSMEC, INC. 70 SOUTH STREET WALPOLE, MA. 02081

SCALE: 3/16"=1" DRAWN BY: MCM CHECKED BY: MM  
SHEET 1 OF 2 DATE: 7/07 DATE: 7/07

COSMEC PREFORMED FABRIC BEARINGS

REV.	BY	DATE	CK'D	DATE	CUSTOMER	S.O. NUMBER	DRAWING NUMBER	REV.
					BOLW & COTE, INC.	60748	5280	