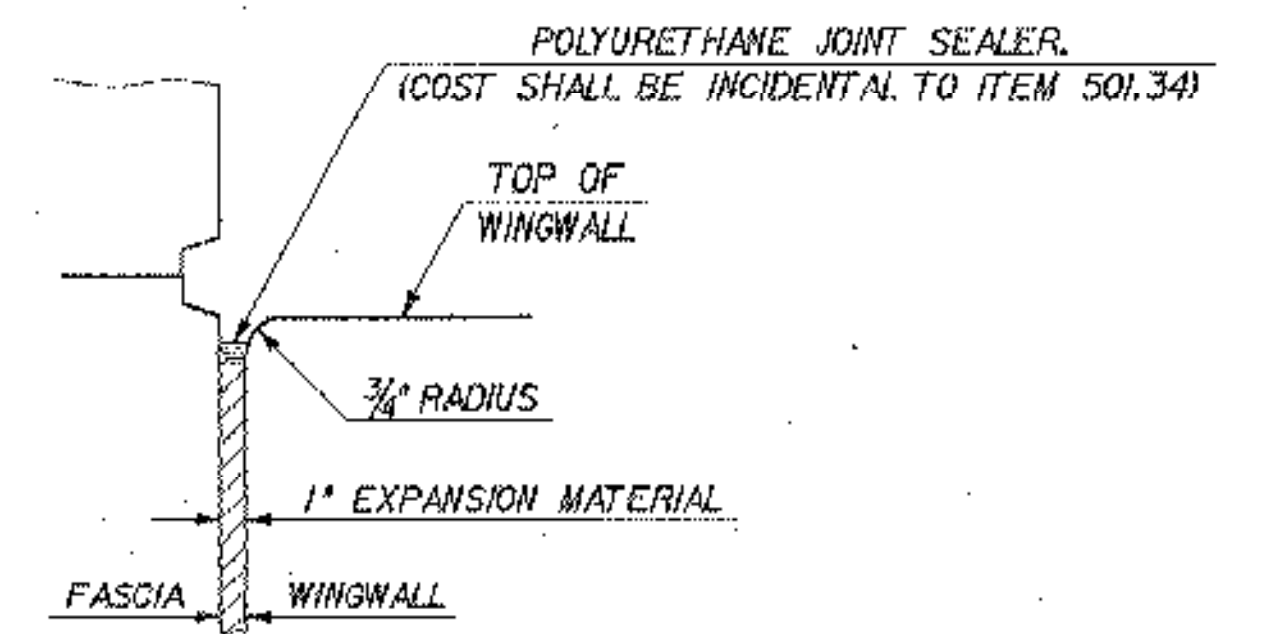
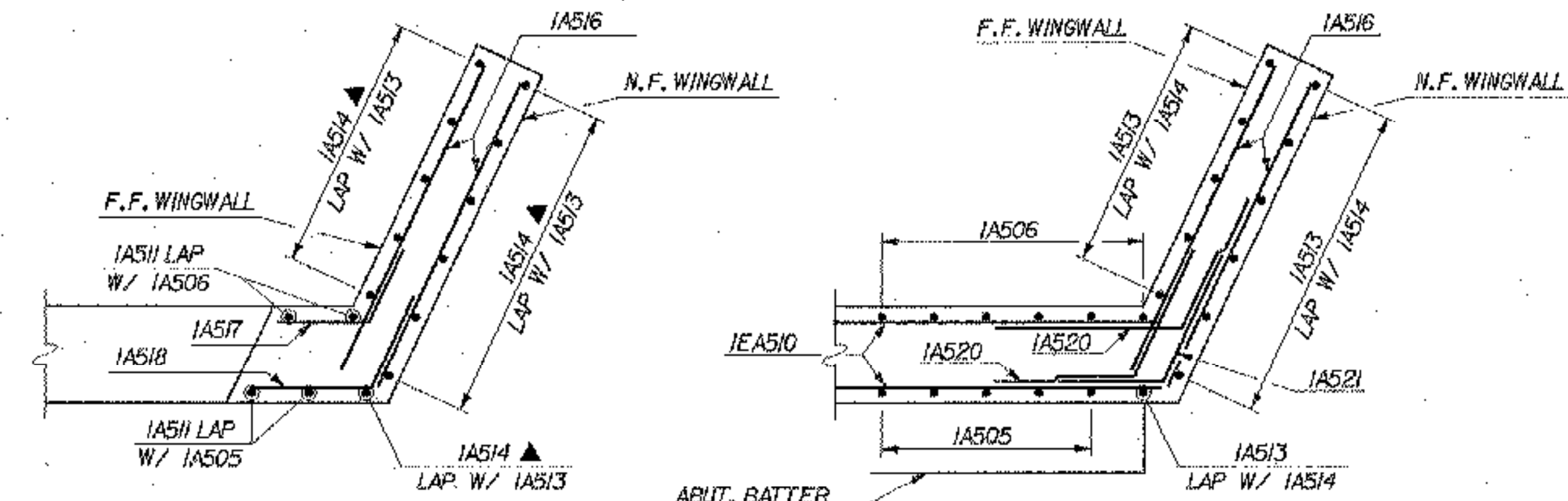


WORKING POINTS		
LOCATION	NORTHING	EASTING
W.P. 1	88463.8120	47954.6286
W.P. 2	88448.6883	47953.1077
W.P. 3	88433.4715	47951.5775

PLAN



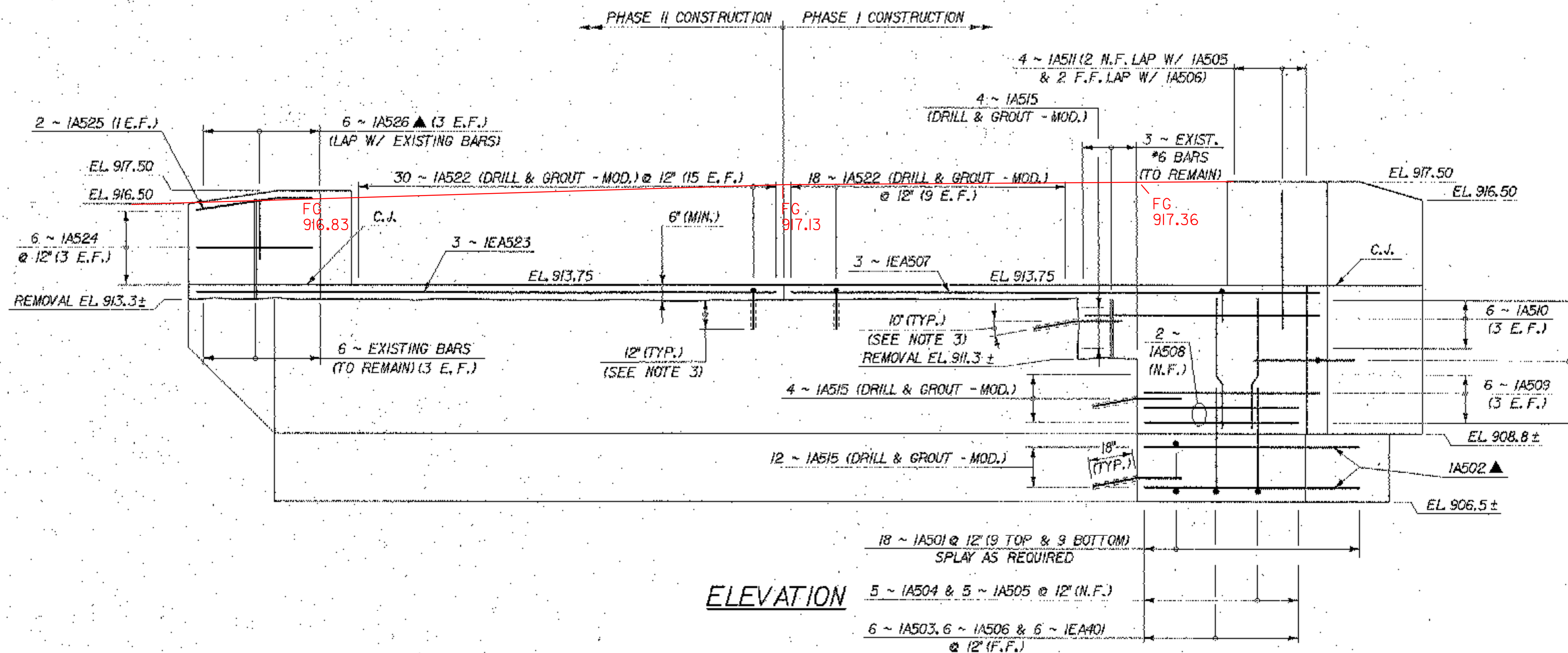
JOINT BETWEEN FASCIA AND WINGWALL  
SCALE: N.T.S.



ABOVE BRIDGE SEAT

BELOW BRIDGE SEAT

WINGWALL NO. 1 CORNER DETAILS  
SCALE: 3/8" = 1'-0"



ELEVATION  
ABUTMENT MODIFICATIONS

SCALE: 3/8" = 1'-0"

NOTES

- FOR SECTIONS A-A, B-B, C-C, D-D, & E-E AND W.W. NO. 1 ELEVATION, SEE SHEET 26.
- FOR GENERAL NOTES, SEE SHEET 16.
- HORIZONTAL DRILL AND GROUT BARS SHALL BE EMBEDDED 18 INCHES INTO EXISTING CONCRETE AND VERTICAL DRILL AND GROUT BARS SHALL BE EMBEDDED 12 INCHES INTO EXISTING CONCRETE.

LEGEND

- N.F. = NEAR FACE
- F.F. = FAR FACE
- E.F. = EACH FACE
- C.J. = CONSTRUCTION JOINT
- ▲ = CUT TO FIT IN FIELD
- [Hatched Area] = LIMITS OF CONCRETE REMOVAL

STATE OF VERMONT  
AGENCY OF TRANSPORTATION

Town Of	WARREN	Bridge No.	7
Highway No.	TH 1	Log Sta.	
		Surv. Sta.	
BROOK ROAD OVER FREEMAN BROOK			
ABUTMENT NO. 1			
Designed By	S. DELIA	Drawn By	P. DUSTIN
Checked By	Date	Bridge Design Supervisor	
R. JOY	02/07	R. ROONEY	Date 02/07
PROJECT	WARREN	PROJECT NO.	BHF 0188(7)
I.G.C. Info. m:\549107-Warren\BRIDGE\1\m\z\276ab2.dgn			
Bridge Sheet No.		Sheet	25 of 36

