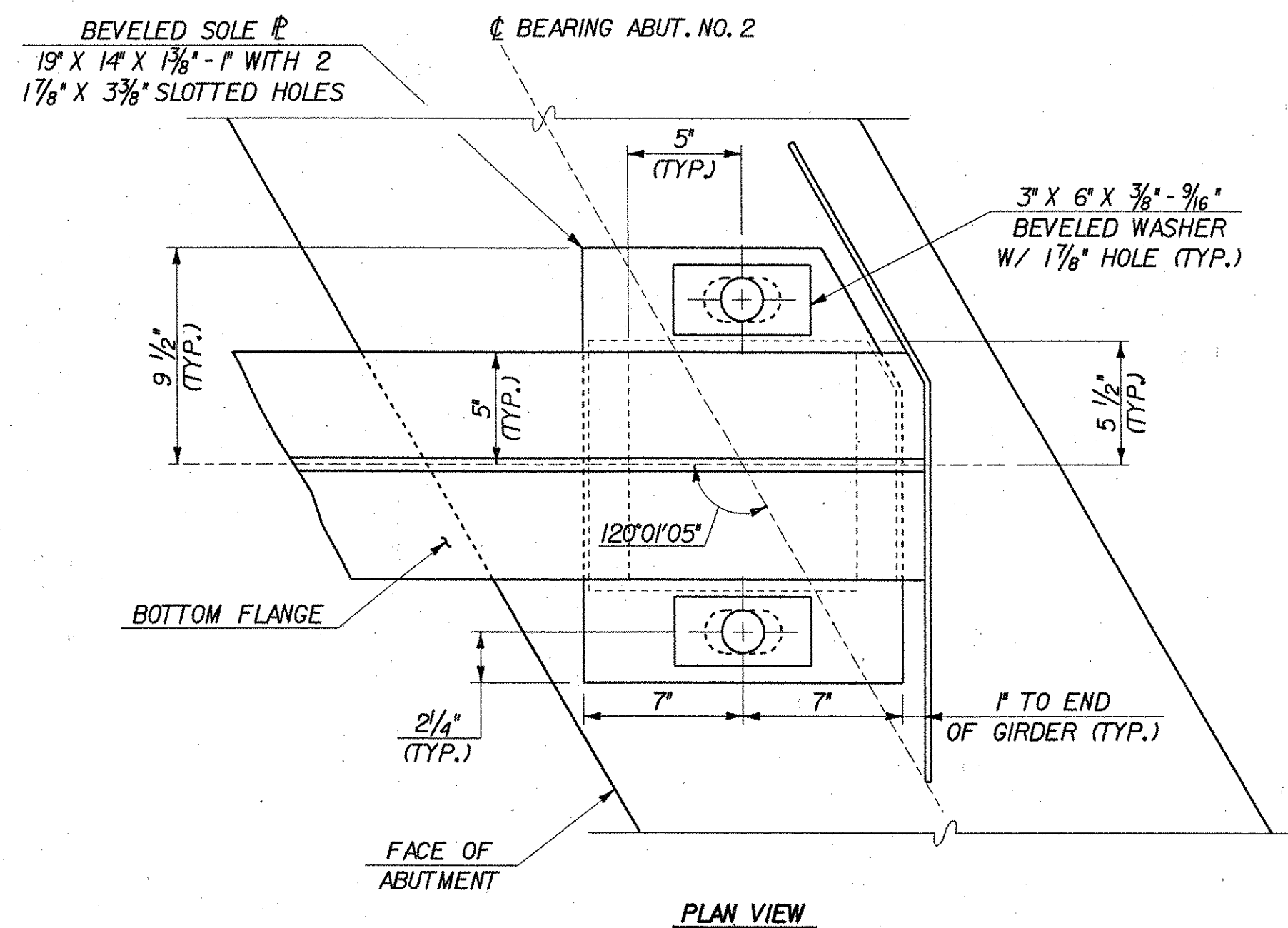
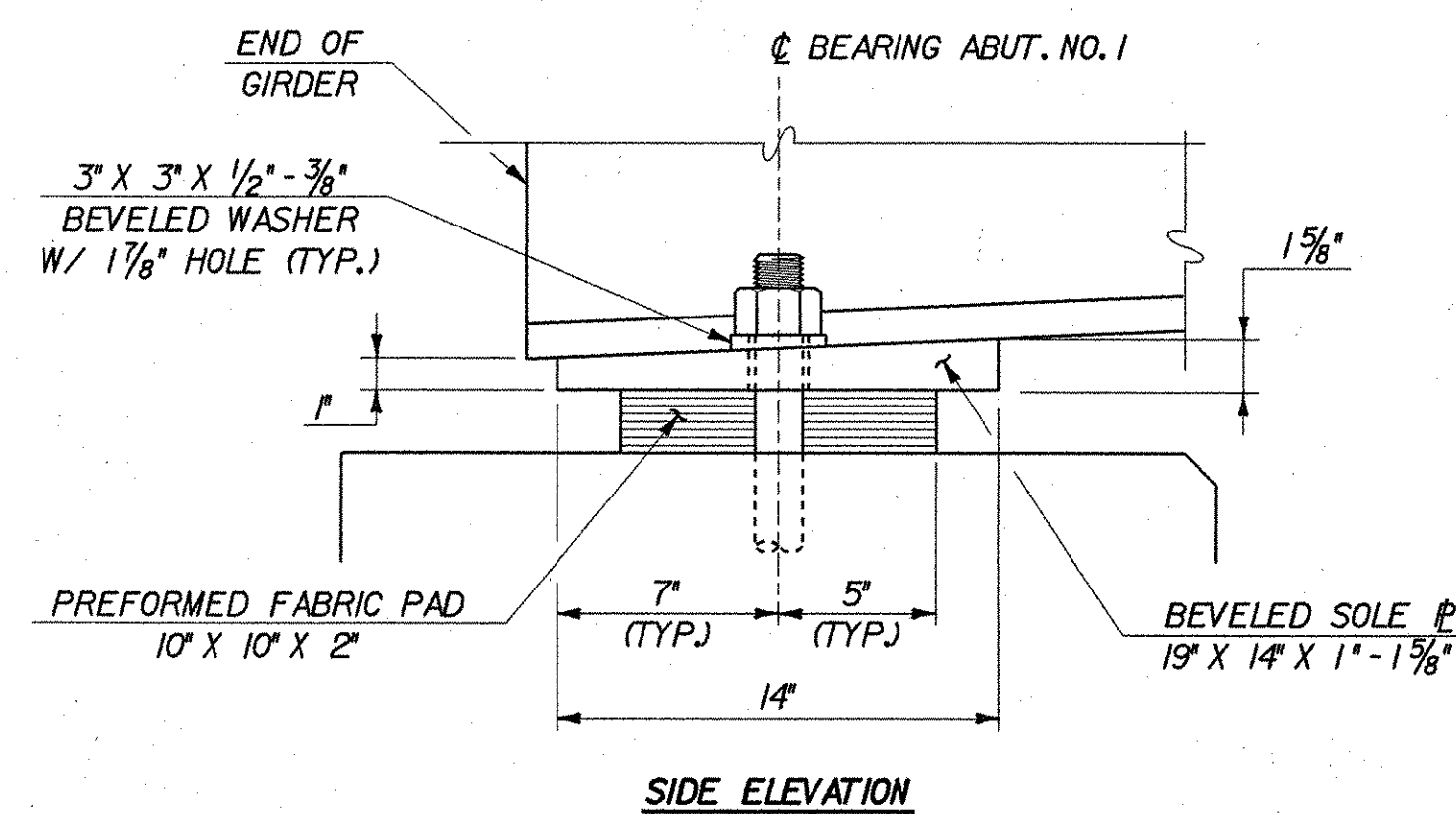


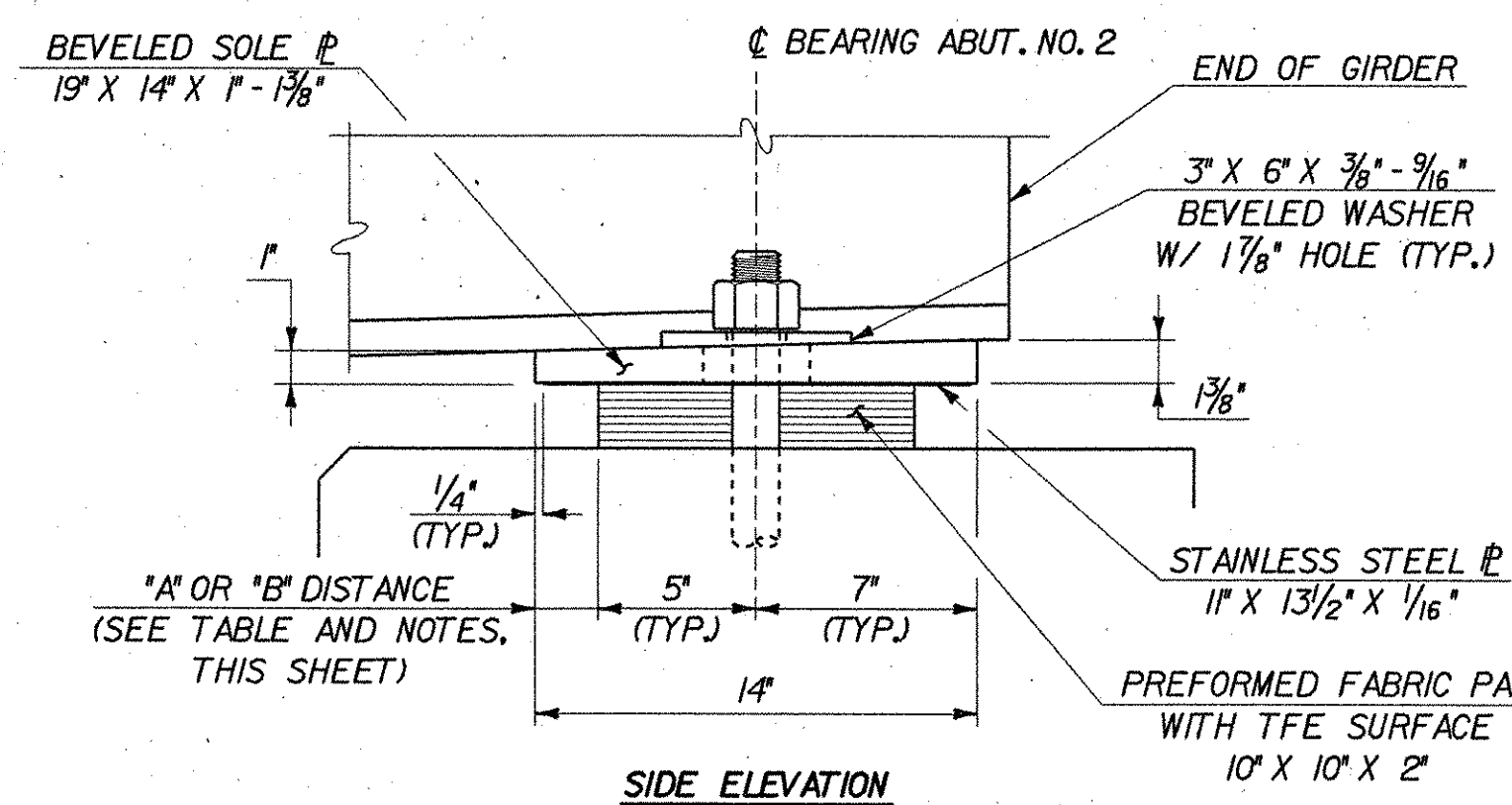
PLAN VIEW



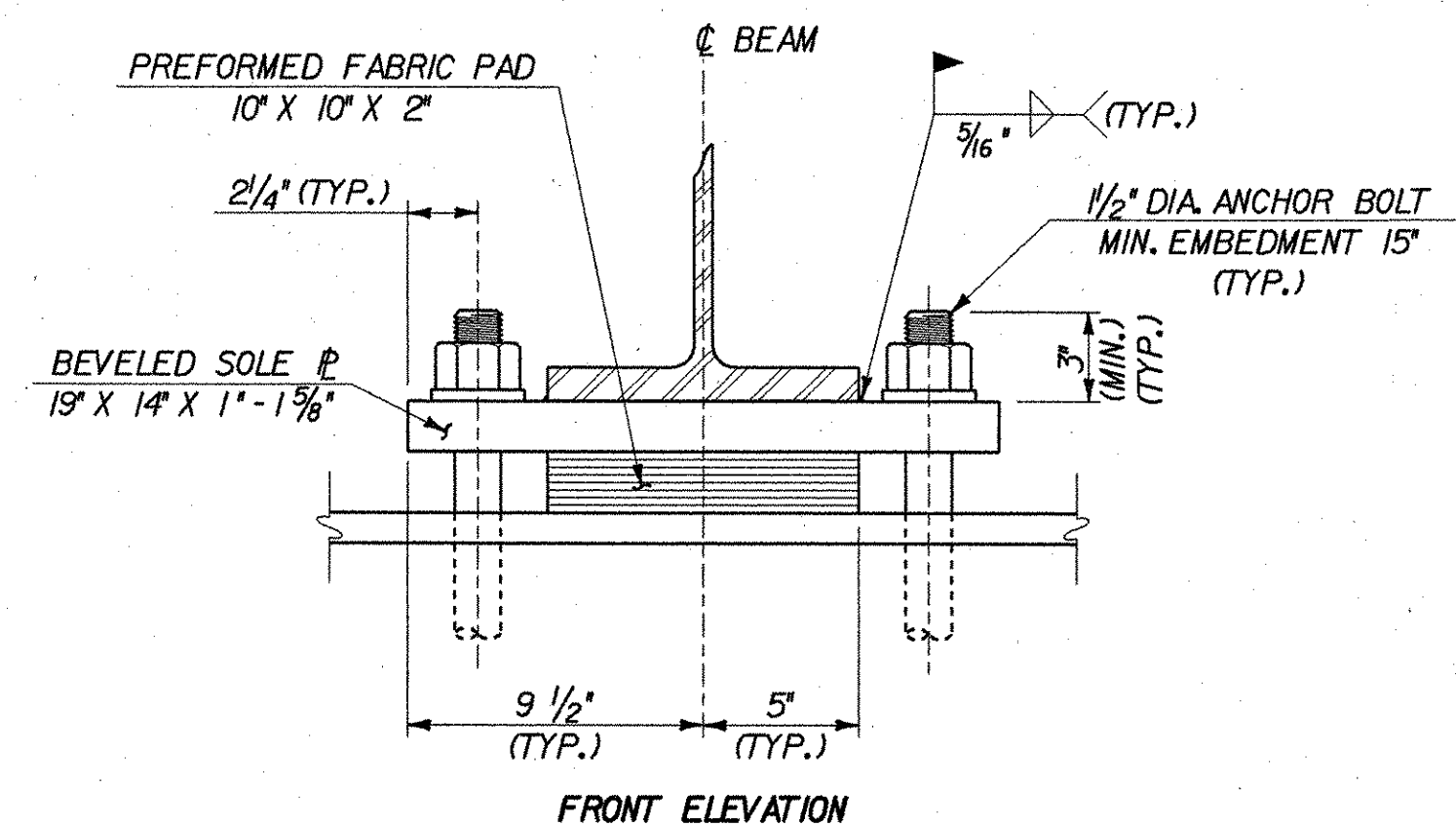
PLAN VIEW



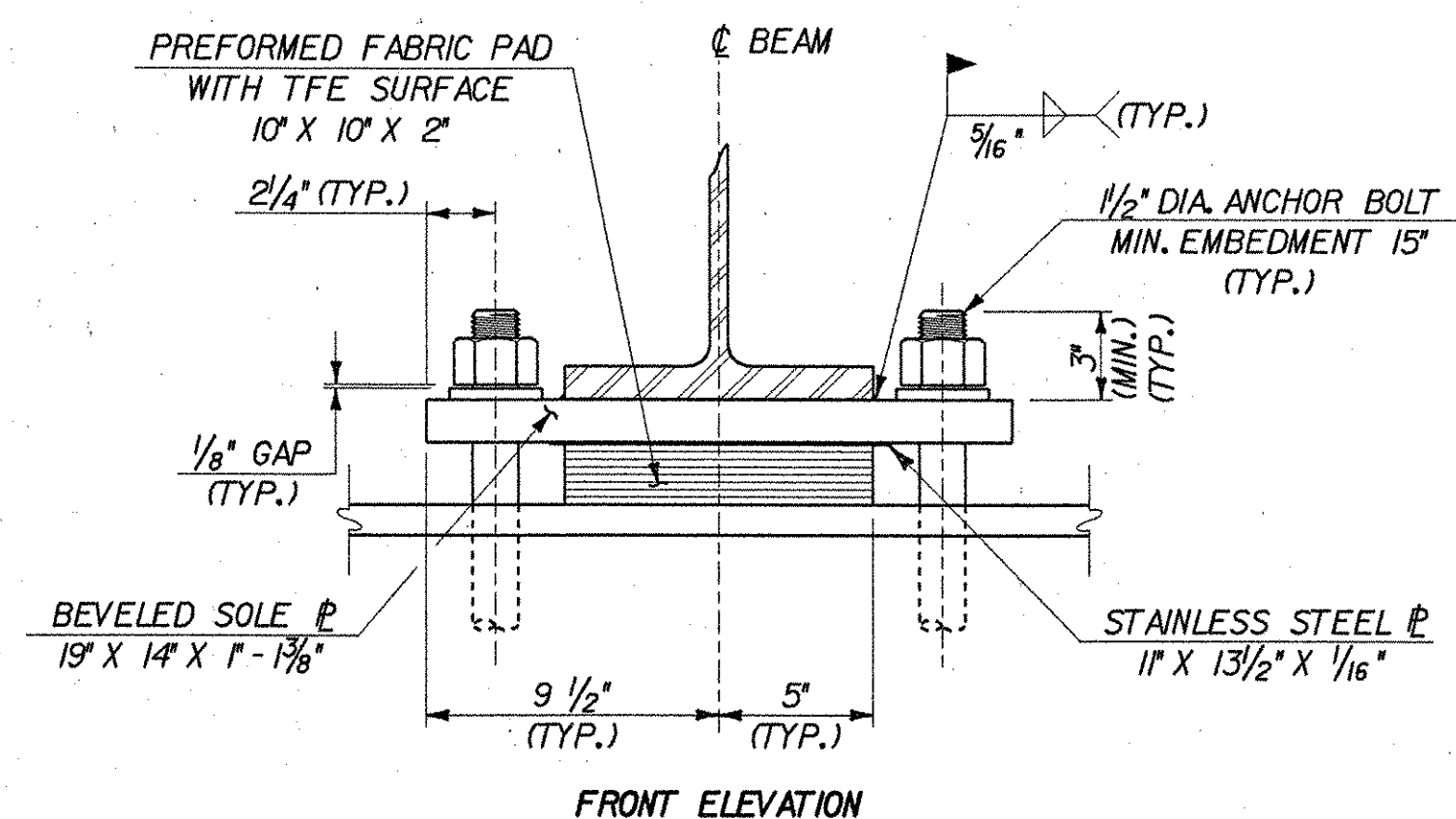
SIDE ELEVATION



SIDE ELEVATION



FRONT ELEVATION



FRONT ELEVATION

FIXED BEARING @ ABUTMENT NO. 1
SCALE: 2" = 1'-0"

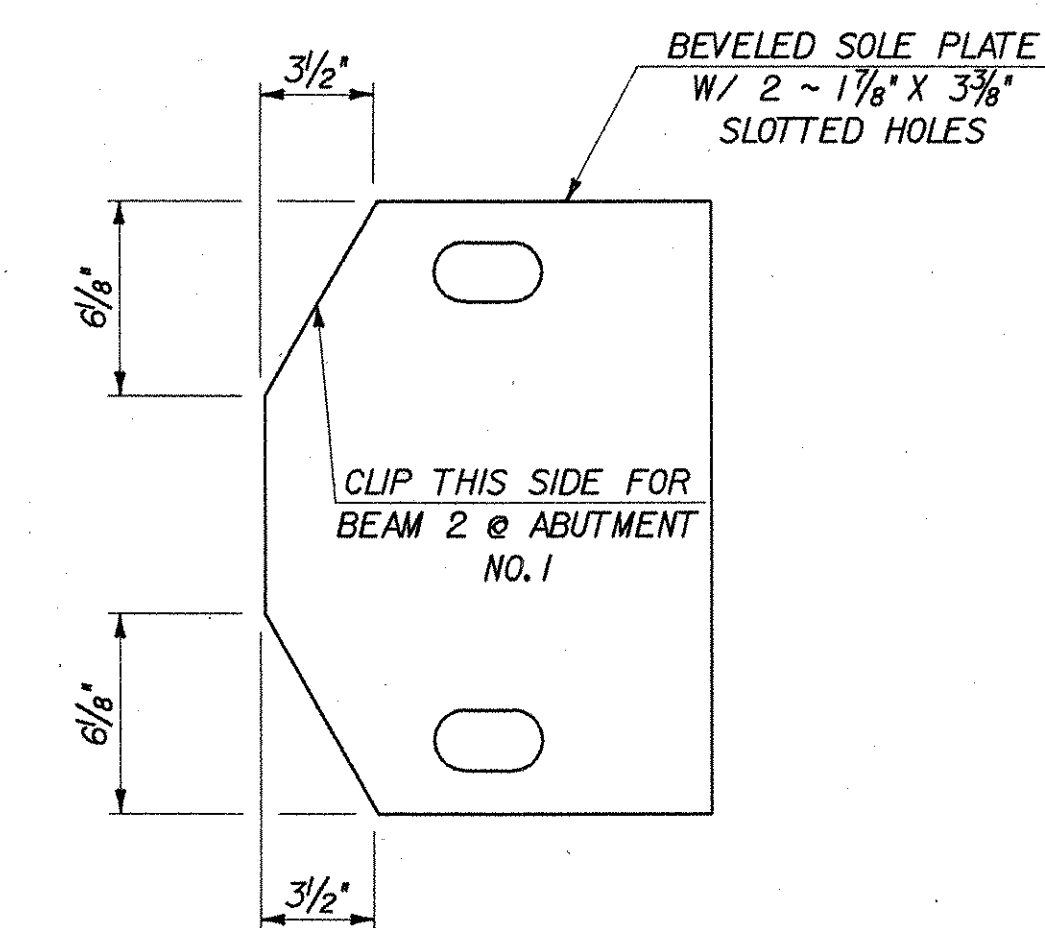
EXPANSION BEARING @ ABUTMENT NO. 2
SCALE: 2" = 1'-0"

BEARING NOTES

- BEARINGS SHALL CONFORM TO APPLICABLE SUBSECTIONS OF SECTION 531 & 731.
- BEARINGS SHALL BE PAID FOR UNDER ITEM 531.10, BEARING DEVICE ASSEMBLY (FABRIC).
- SHOP DRAWINGS CONFORMING TO SUBSECTION 531.03 SHALL BE SUBMITTED TO INCLUDE WELDING AND BONDING PROCEDURES.
- THE CONCRETE SURFACE UNDER THE BEARING DEVICE SHALL BE LEVEL.
- *A* DISTANCE IS THE FINAL SETTING FOR THE BEARING PAD AFTER ALL DEAD LOAD HAS BEEN APPLIED. THE FINAL *A* DISTANCE, AS SHOWN IN THE TABLE, MUST BE ATTAINED WITHIN 1/8 INCH. *B* DISTANCE IS FOR SETTING THE BEARING AFTER THE STRUCTURAL STEEL IS ERECTED AND BEFORE THE CONCRETE DECK IS POURED.
- DESIGN CRITERIA:
A. BASE PLATE TO CONCRETE DESIGN PRESSURE = 1000 PSI MAXIMUM.
B. MINIMUM DESIGN ROTATION = 0.015 RADIANS.
C. DESIGN LOAD PER BEARING @ ABUTMENTS NO. 1 & 2 (UNFACTORED).
R_{DL,SOL} = 47 KIPS
R_{LL,1} = 48 KIPS
- ALL STEEL IN BEARING DEVICES (EXCEPT STAINLESS STEEL) SHALL BE AASHTO M-270, GRADE 36.
- ANCHOR BOLTS SHALL BE SWEDGED AND GALVANIZED WITH 4" OF THREAD. EXPANSION BEARING NUTS ARE TO BE DRAWN UP FINGER TIGHT AND THEN BACKED OFF 1/8 INCH. THREADS SHALL BE BURRED TO PREVENT NUT REMOVAL. ANCHOR BOLTS SHALL HAVE A MINIMUM OF 15" EMBEDMENT INTO THE CONCRETE. ANCHOR BOLTS, NUTS AND WASHERS SHALL MEET THE REQUIREMENTS OF SECTION 714.08.
- ALL BEARING DEVICES SHALL BE GALVANIZED OR METALIZED. AREAS OF GALVANIZING OR METALIZING DAMAGED BY THE FIELD WELDS OR HANDLING SHALL BE REPAIRED PER SECTION 513 OF THE SUPPLEMENTAL SPECIFICATIONS.
- ALL HORIZONTAL DIMENSIONS SHOWN @ 45° ARE FINAL CONDITION DIMENSIONS.

TEMPERATURE SETTING TABLE

ABUTMENT NO. 2		
TEMP	*A* DIST	*B* DIST
0° F	1 3/16"	2 3/16"
15° F	1 7/8"	2 1/4"
30° F	1 9/16"	2 3/16"
45° F	2"	2 3/8"
60° F	2 1/16"	2 1/16"
75° F	2 1/8"	2 1/2"
90° F	2 3/16"	2 3/16"
105° F	2 5/16"	2 1/16"



SOLE PLATE CLIP DETAIL
SCALE: 2" = 1'-0"
NOTE: FIXED BEARING SHOWN, EXP. BEARING SIMILAR.

STATE OF VERMONT AGENCY OF TRANSPORTATION

Town Of	WARREN	Bridge No.	7
Highway No.	TH 1	Log Sta.	
BROOK ROAD OVER FREEMAN BROOK			
BEARING DETAILS			
Designed By	S. DEJIA	Drawn By	S. DEJIA
Checked By	R. JOY	Bridge Design Supervisor	R. ROONEY
Date	02/07	Date	02/07
PROJECT	WARREN	PROJECT NO.	BHF 0188(7)
I.G.C. Info. m:\549107-Warren\BRIDGE\T1nal\z\276brg.dgn		Sheet 23 of 36	

