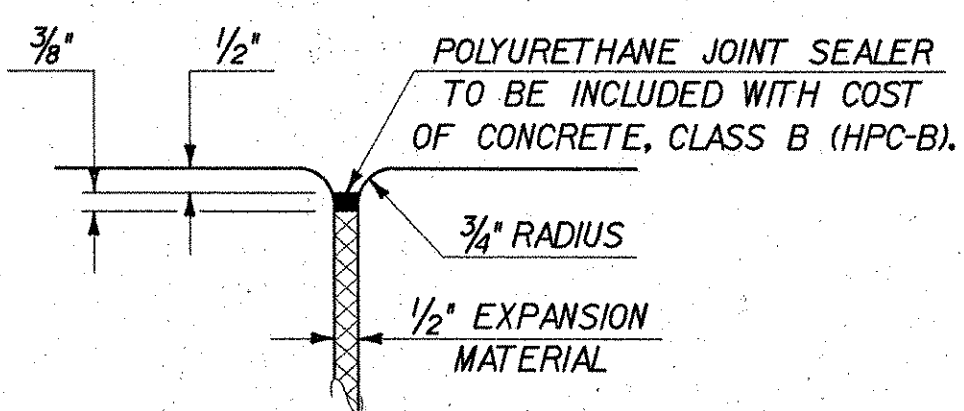
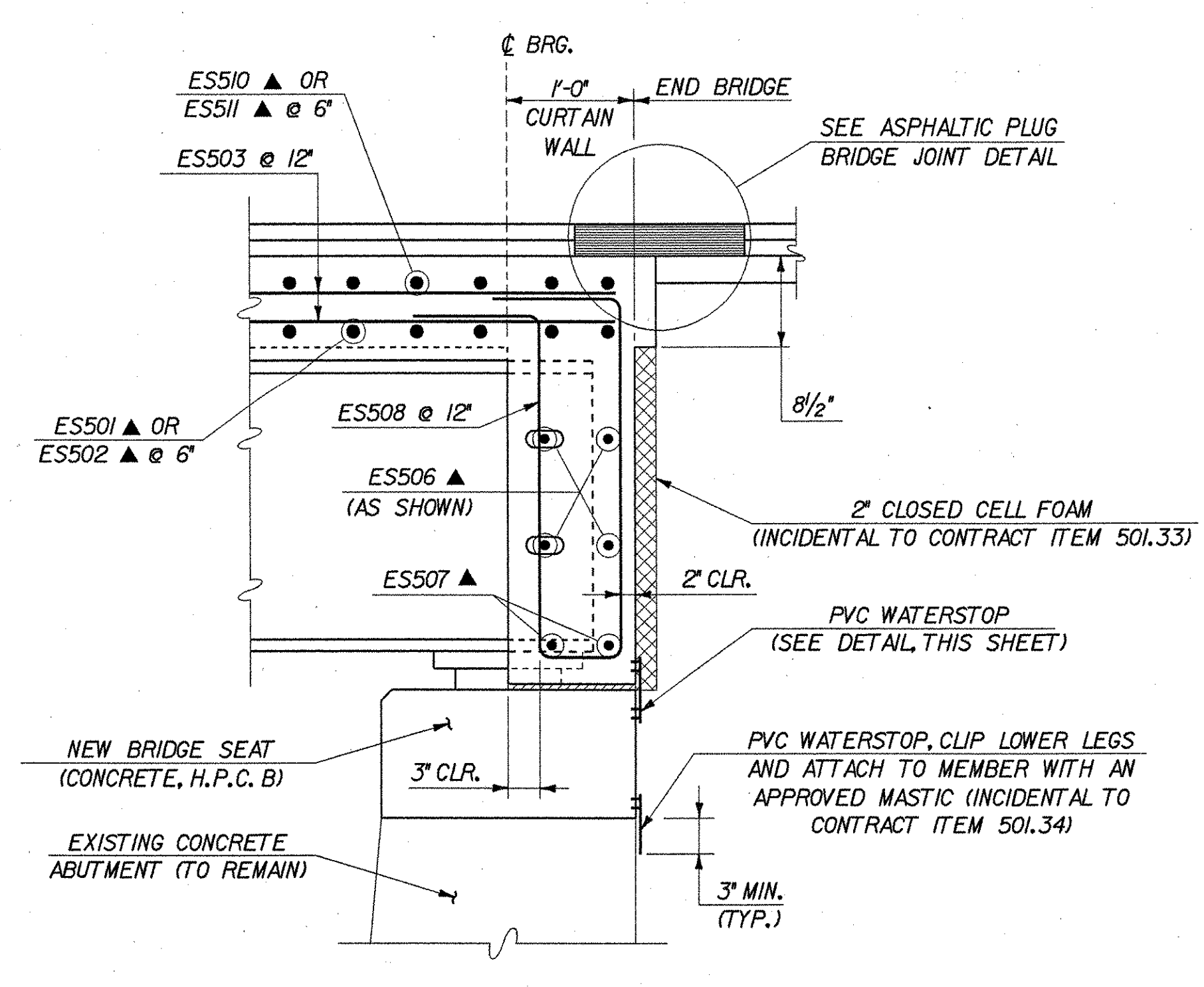
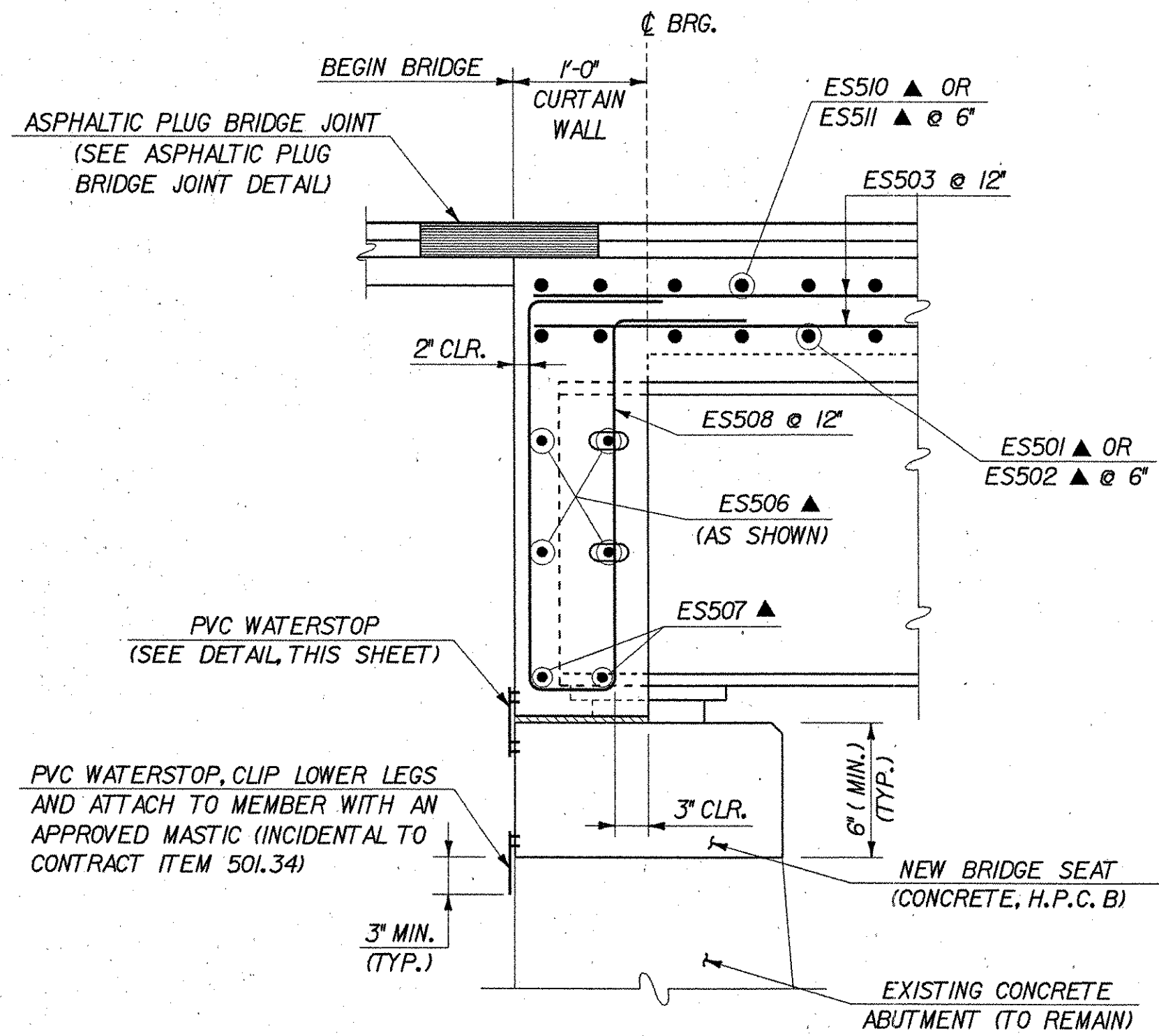
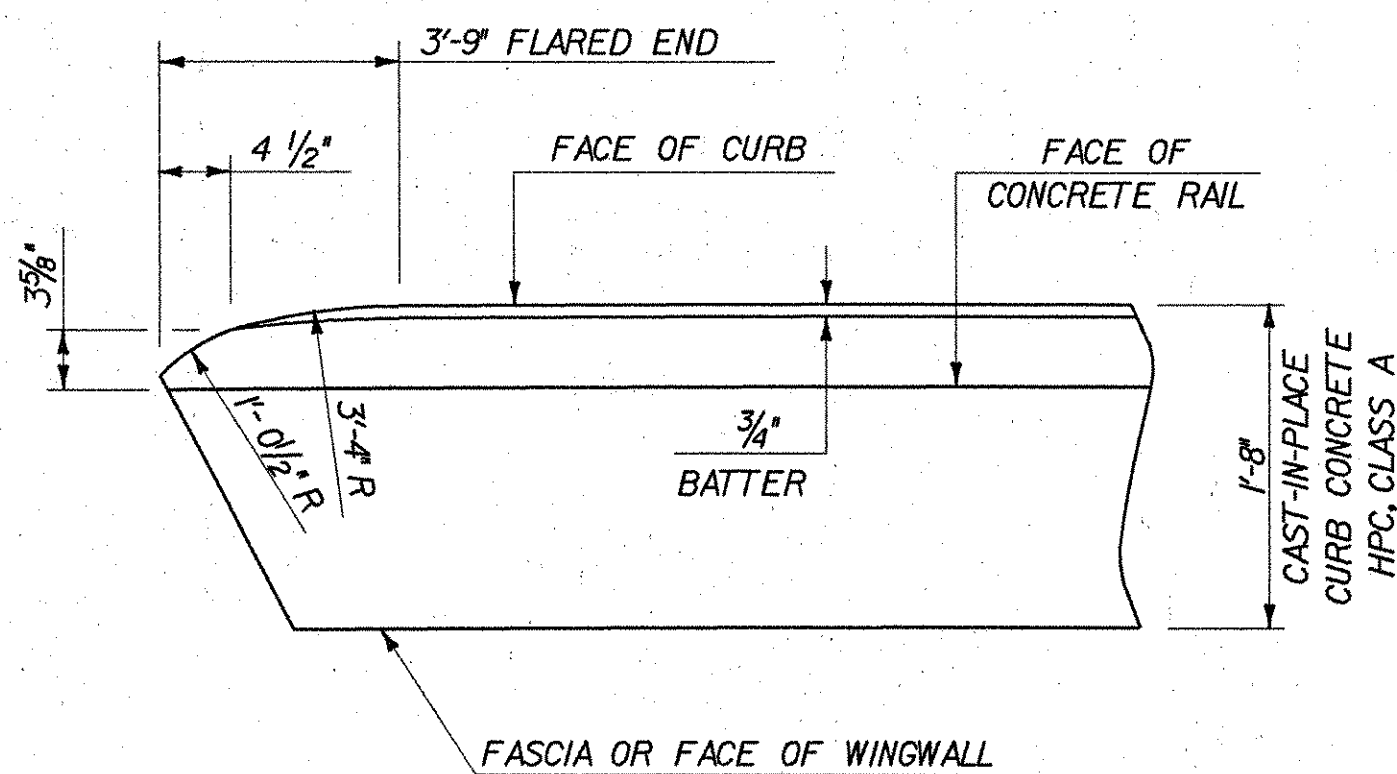


CURBING NOTES

1. FOR LOCATION OF CONSTRUCTION JOINTS, SEE SHEET 29. CONCRETE SHALL BE PLACED WITH A MINIMUM OF 48 HOURS DELAY BETWEEN ADJACENT POURS.
2. LONGITUDINAL REINFORCING SHALL PASS THROUGH CONCRETE CURB CONSTRUCTION JOINTS.
3. THE COLOR OF POLYURETHANE JOINT SEALER, (SUBSECTION 524.06 (D)) SHALL MATCH CONCRETE. COST SHALL BE INCIDENTAL TO CONTRACT ITEM 501.33.
4. POLYURETHANE JOINT SEALER SHALL BE USED ABOVE AND BELOW THE ARCHITECTURAL PANEL, BUT NOT WITHIN THE PANEL ITSELF.



FLARED END CURB DETAIL



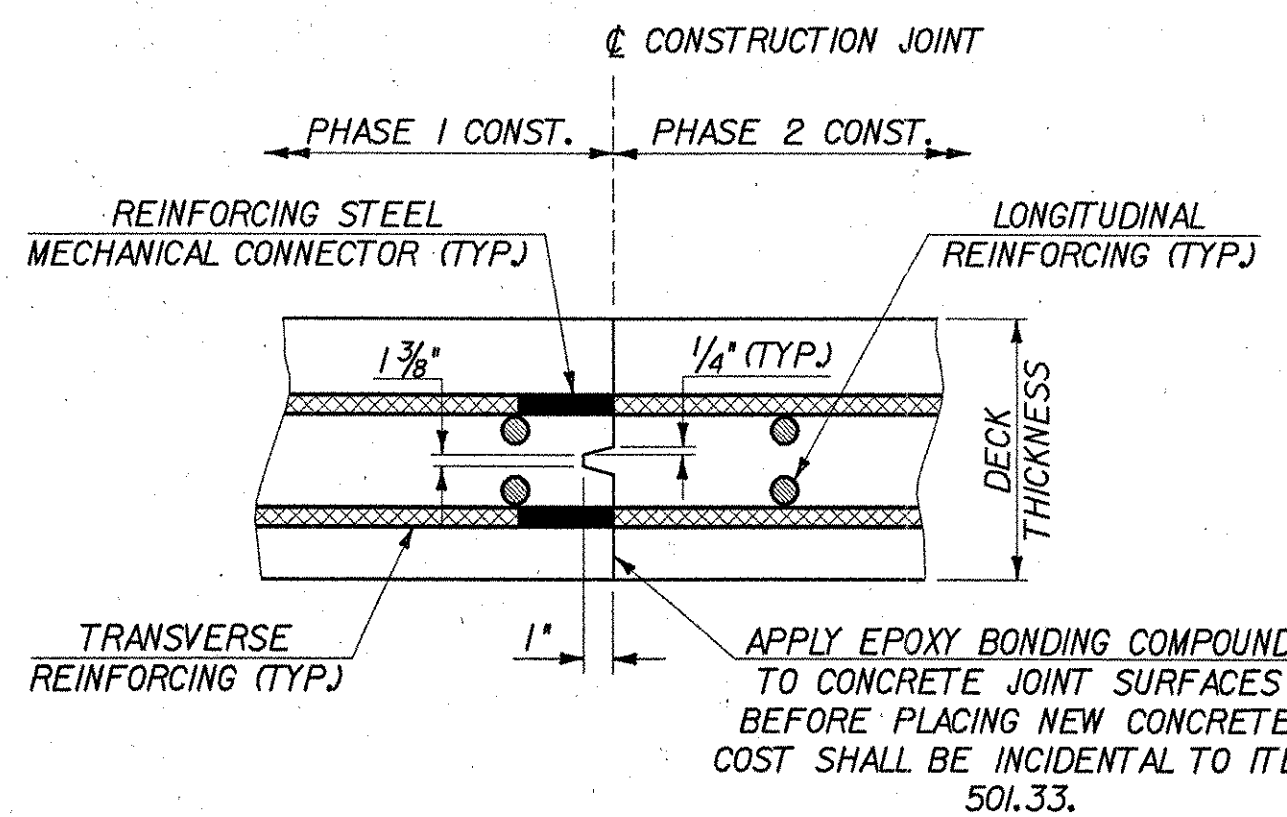
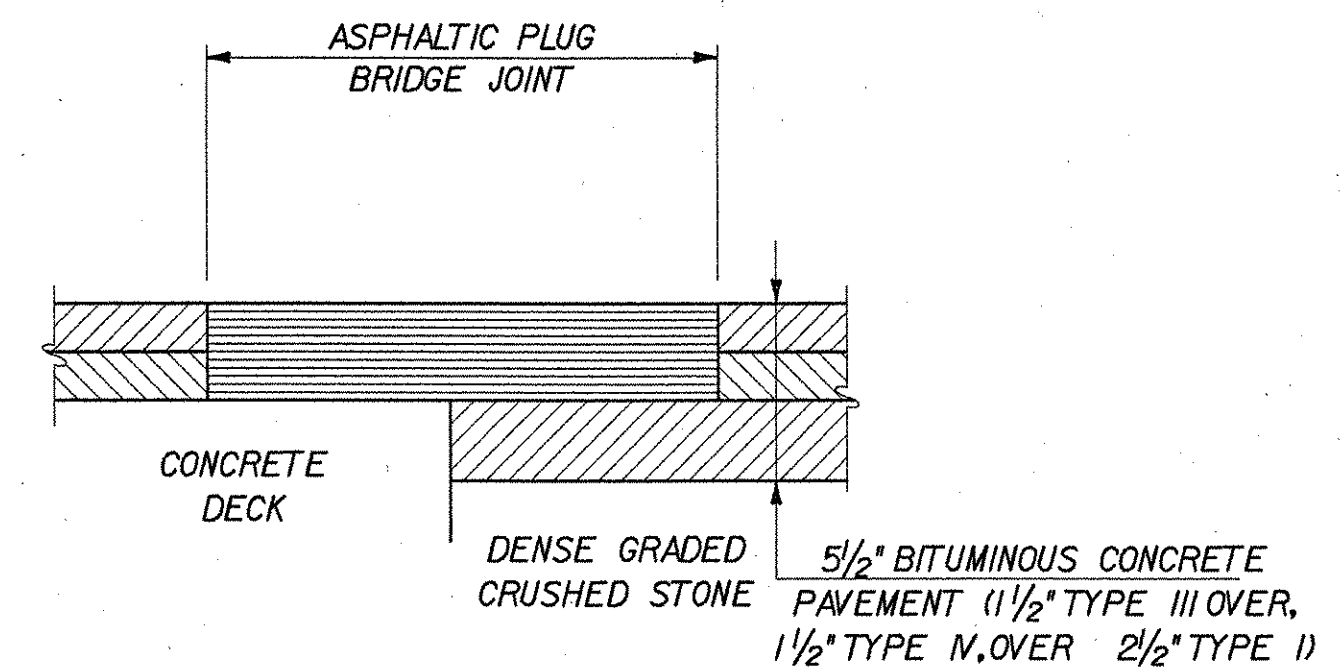
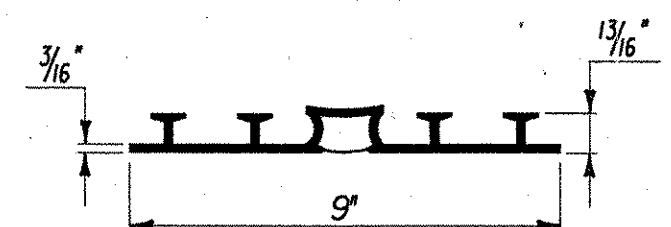
SECTION - FIXED END *

SECTION - EXPANSION END *

* SECTIONS SHOWN PERPENDICULAR TO C

P.V.C. WATERSTOP FOR EXPANSION JOINTS

NOT TO SCALE
THE COSTS FOR P.V.C. WATERSTOP SHALL BE INCIDENTAL TO CONTRACT ITEM 501.34. OTHER CONFIGURATIONS MAY BE USED UPON APPROVAL OF THE STRUCTURES ENGINEER.



NOTES

1. FOR CONCRETE CURB REINFORCEMENT, SEE SHEET 18.
2. FOR CONCRETE RAIL REINFORCEMENT, SEE SHEET 30.

STATE OF VERMONT AGENCY OF TRANSPORTATION

Town Of	WARREN	Bridge No.	7
Highway No.	TH 1	Log Sta.	
		Surv. Sta.	
BROOK ROAD OVER FREEMAN BROOK			
SUPERSTRUCTURE DETAILS			
Designed By	S. DELIA	Drawn By	S. DELIA
Checked By	R. JOY	Bridge Design Supervisor	R. ROONEY
Date	02/07	Date	02/07
PROJECT	WARREN	PROJECT NO.	BHF 0188(7)
I.G.C. Info. m:\549107-Warren\BRIDGE\Final\276sdr.dgn			
Bridge Sheet No.		Sheet	19 of 36

