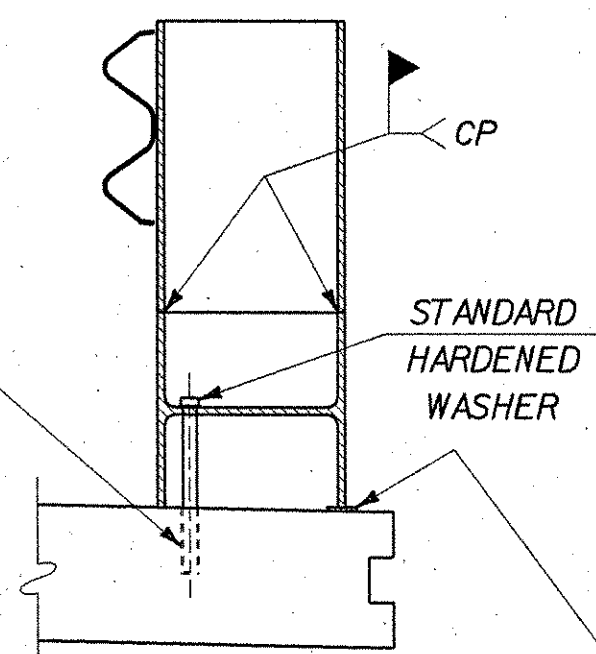


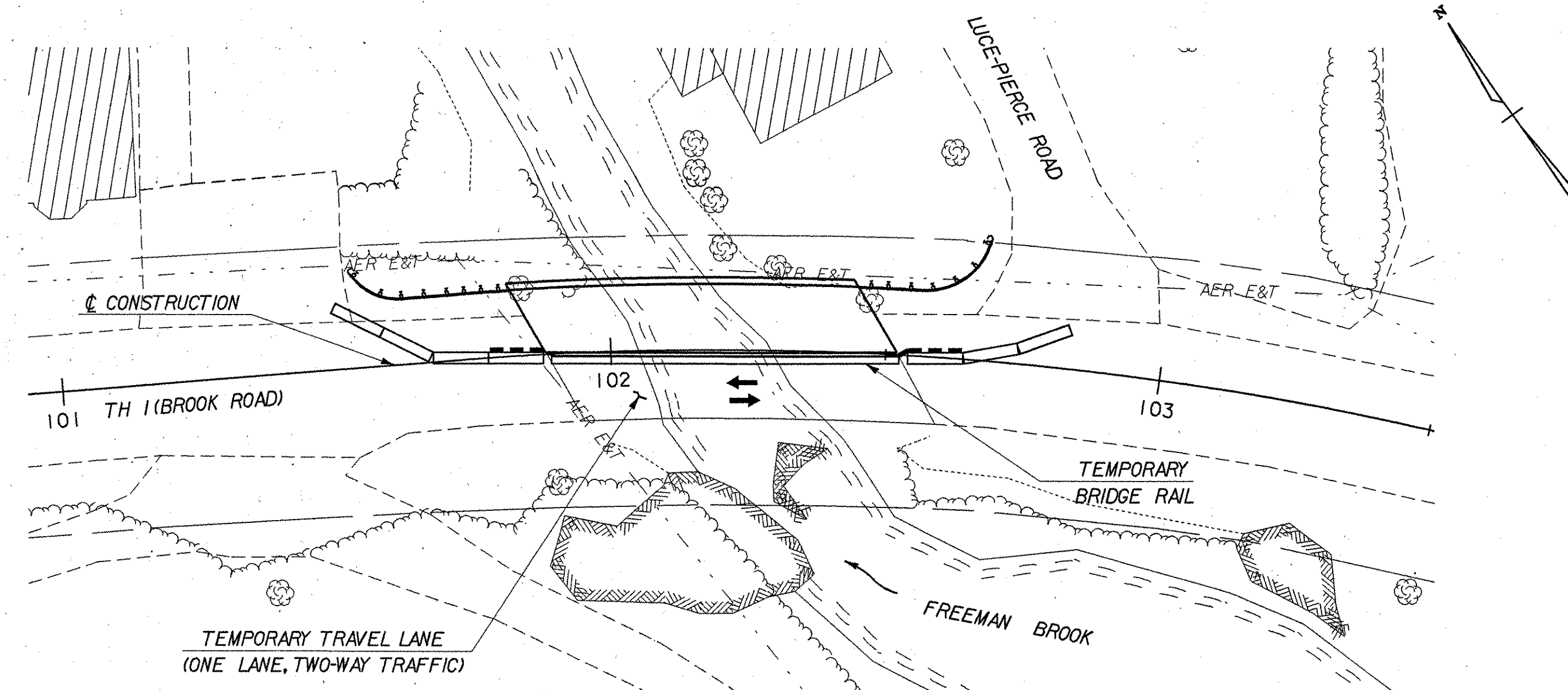
**EXISTING TYPICAL SECTION**  
SCALE: 3/8" = 1'-0"

ATTACH BARRIER TO DECK  
CORE 1" DIA. HOLE INTO DECK AND  
INSERT 7/8" DIA. SLEEVE INTO HOLE  
FILLED WITH EPOXY MORTAR. SECURE  
BARRIER WITH 7/8" DIA. BOLTS (6"-3"  
MAX. SPACING). AFTER REMOVING BOLTS,  
FILL SLEEVES WITH EPOXY MORTAR

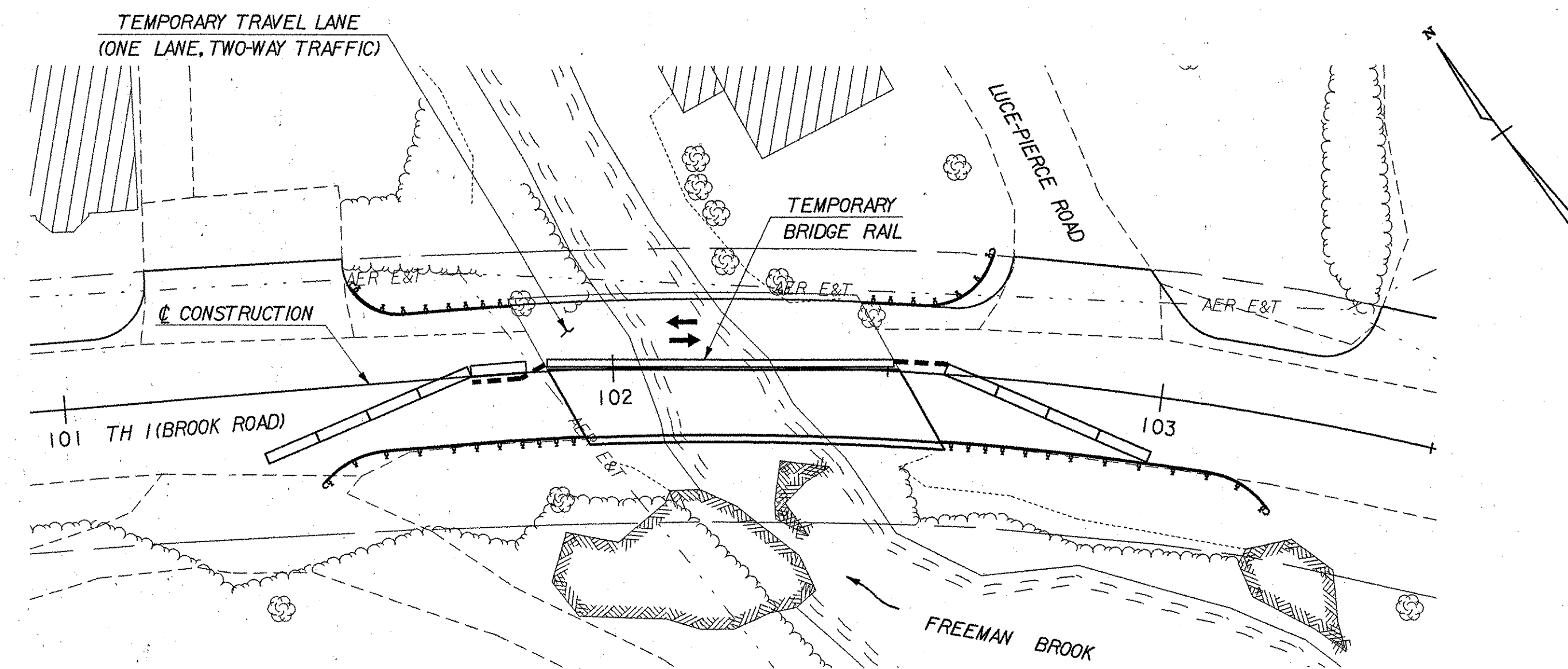


**TEMPORARY BRIDGE  
RAIL DETAIL (PHASE II)**  
SCALE: N.T.S.  
(SEE NOTE 3)

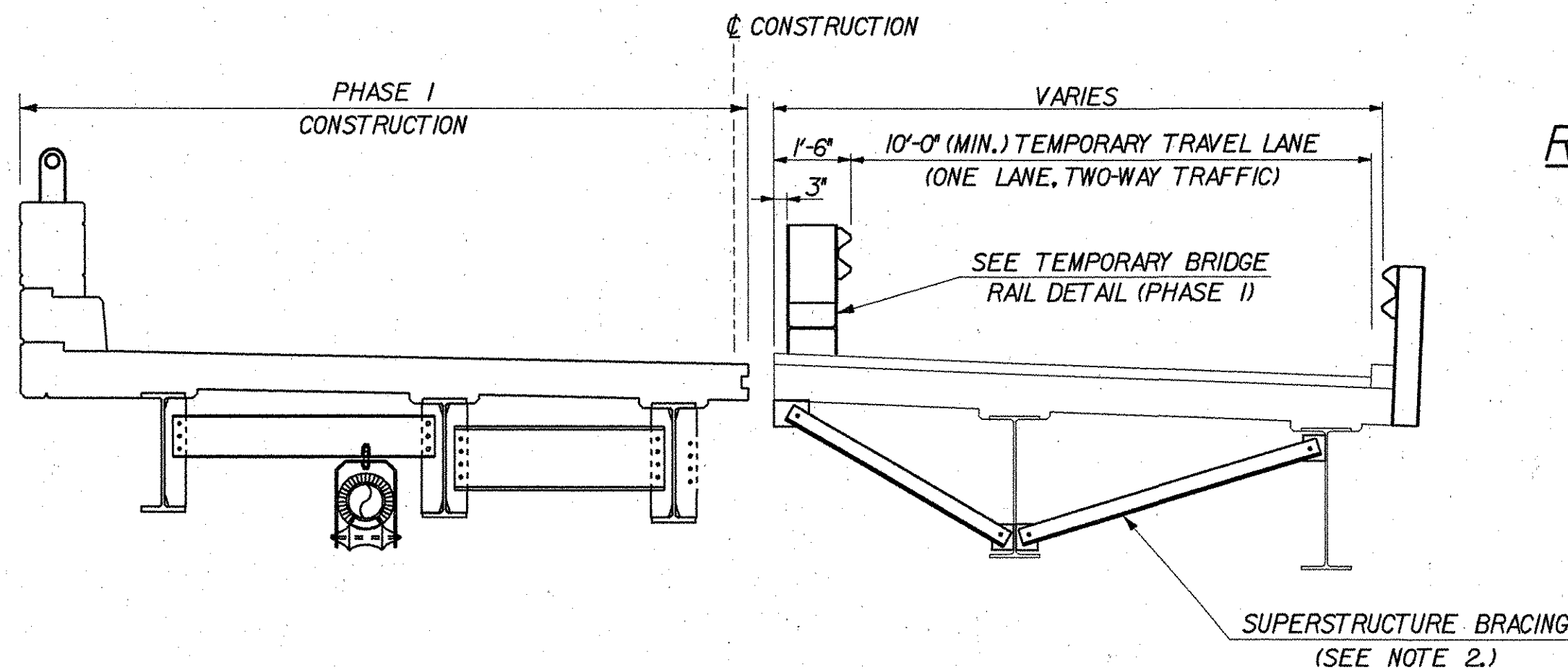
STEEL SHIM PLATE AT  
EACH POST AS NEEDED  
FOR ALIGNING POST  
IN VERTICAL POSITION



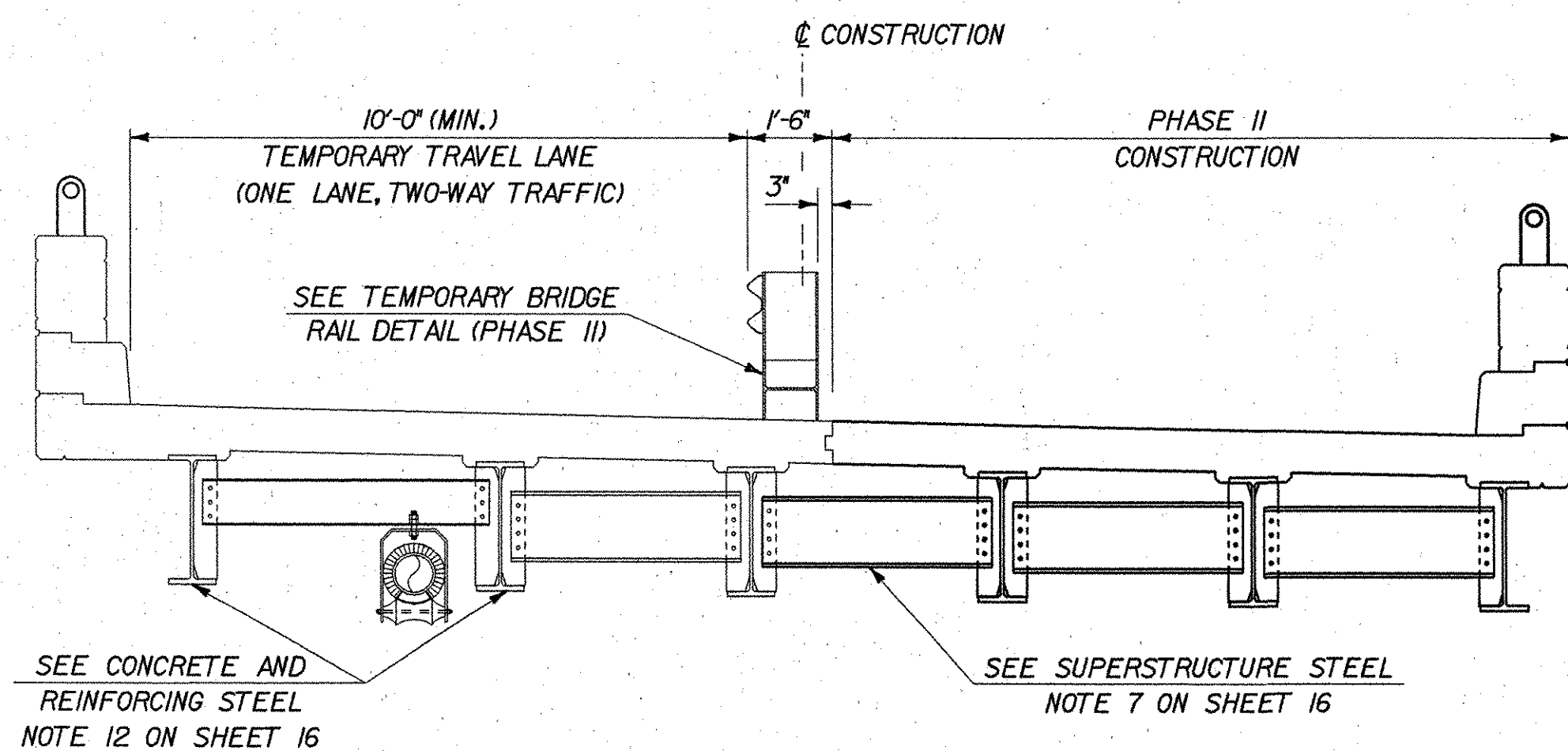
**PHASE I CONSTRUCTION**  
SCALE 1" = 20'-0"



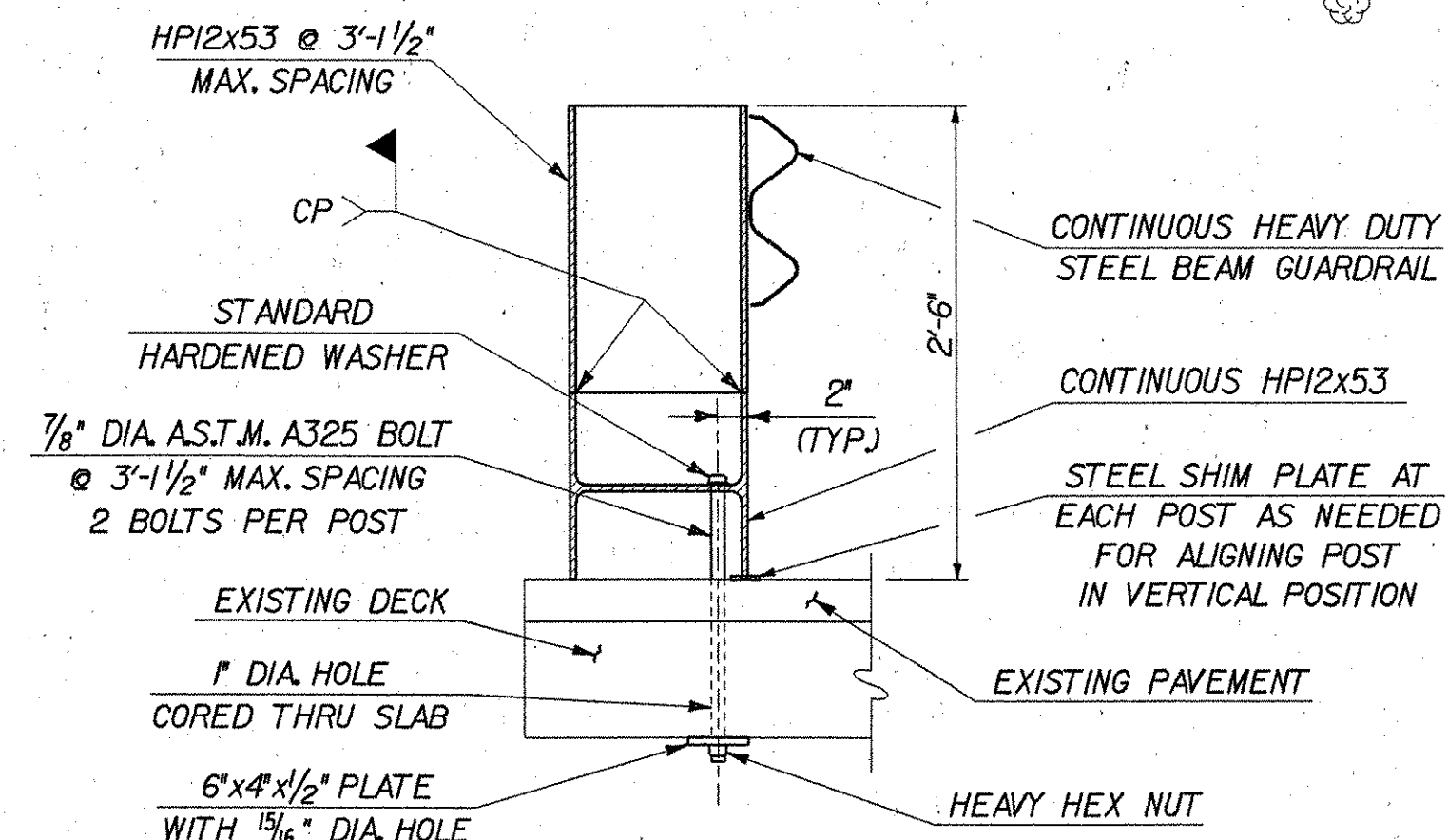
**PHASE II CONSTRUCTION**  
SCALE 1" = 20'-0"



**TYPICAL SECTION - PHASE I**  
SCALE: 3/8" = 1'-0"



**TYPICAL SECTION - PHASE II**  
SCALE: 3/8" = 1'-0"



**TEMPORARY BRIDGE RAIL DETAIL (PHASE I)**  
SCALE: N.T.S.  
(SEE NOTE 3)

**LEGEND**

- TEMPORARY EXCAVATION SUPPORT
- TEMPORARY CONCRETE TRAFFIC BARRIER

**NOTES**

1. FOR TRAFFIC CONTROL SIGNING, SEE SHEET 14.
2. FOR SUPERSTRUCTURE BRACING NOTES, SEE SHEET 16.
3. THE CONTRACTOR MAY SUBMIT ALTERNATIVE TEMPORARY RAIL DETAILS. ALL COST ASSOCIATED WITH TEMPORARY BRIDGE RAIL SHALL BE INCLUDED IN ITEM 525.40, BRIDGE RAILING, GALVANIZED HD STEEL BEAM / CURB MOUNTED (MOD).



**STATE OF VERMONT  
AGENCY OF TRANSPORTATION**

Town Of	WARREN	Bridge No.	7
Highway No.	TH 1	Log Sta.	
		Surv. Sta.	
<b>BROOK ROAD OVER FREEMAN BROOK</b>			
<b>CONSTRUCTION PHASING</b>			
Designed By	S. DELIA	Drawn By	S. DELIA
Checked By	R. JOY	Bridge Design Supervisor	R. ROONEY
Date	02/07	Date	02/07
PROJECT	WARREN	PROJECT NO.	BHF 0188(7)
I.G.C. Info. m:\549\07-Warren\BRIDGE\Final\zj2761.dgn			
Bridge Sheet No.		Sheet	15 of 36