

RELOCATE OVERHEAD AERIAL ELECTRIC & TELEPHONE LINES (TEMPORARY)

- (A) SET TEMPORARY POLE AT STA. 101+71.33' LT. OF CENTERLINE.
- (A2) RELOCATE LINE FROM POLE AT STA. 100+85 LT. TO POLE AT STA. 103+27 RT.
- (A3) RELOCATE LINE THAT CROSSES BROOK ROAD FROM POLE AT STA. 101+71 LT. TO POLE AT STA. 103+27 LT.

EXISTING STRUCTURE

SINGLE-SPAN STEEL BEAM WITH CONCRETE DECK
 OVERALL LENGTH - 64 FEET
 CONCRETE SPREAD FOOTING ABUTMENTS
 BRIDGE WIDTH CURB-TO-CURB - 20.0 FEET
 BUILT IN 1947

R&R
 STA. 102+61.64 TO
 STA. TO BE DETERMINED

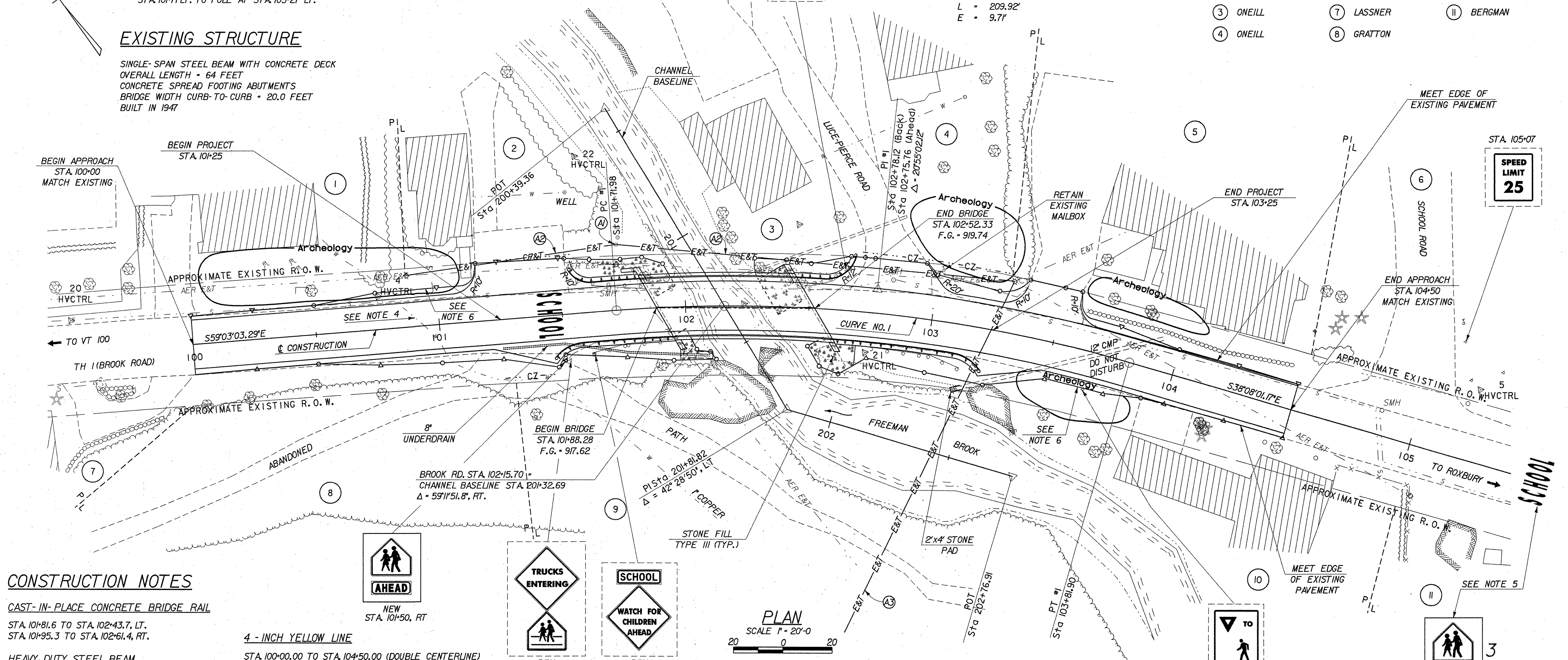
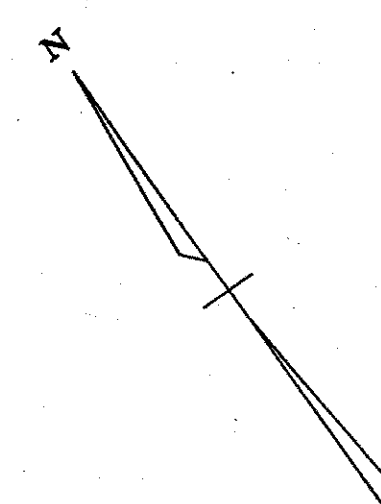
SPEED LIMIT 25

CURVE NO. 1 DATA

- Δ = 20°55'-02.12" RT.
- D = 9°57'-52.14"
- R = 575.00'
- T = 106.14'
- L = 209.92'
- E = 9.71'

PROPERTY OWNERS

- | | | |
|------------|------------------|------------------|
| ① CONNELL | ⑤ KRUSHENICK | ⑨ TOWN OF WARREN |
| ② PERELLIE | ⑥ TOWN OF WARREN | ⑩ NEILL |
| ③ ONEILL | ⑦ LASSNER | ⑪ BERGMAN |
| ④ ONEILL | ⑧ GRATTON | |



CONSTRUCTION NOTES

CAST-IN-PLACE CONCRETE BRIDGE RAIL

STA. 101+81.6 TO STA. 102+43.7, LT.
 STA. 101+95.3 TO STA. 102+61.4, RT.

HEAVY DUTY STEEL BEAM GUARDRAIL (GALVANIZED)

STA. 101+54.0, 17' LT. TO STA. 101+83.2, 12' LT.
 STA. 102+43.5, 12' LT. TO STA. 102+67.5, 22' LT.
 STA. 101+46.4, 17' RT. TO STA. 101+95.6, 12' RT.
 STA. 102+59.6, 12' RT. TO STA. 103+22.2, 17' RT.

ANCHOR FOR STEEL BEAM RAIL

STA. 101+61, LT.
 STA. 102+64, LT.
 STA. 101+54, RT.
 STA. 103+17, RT.

CONSTRUCT PAVED DRIVE

STA. 101+34, LT.
 STA. 102+82, LT.
 STA. 103+46, LT.

LETTER OR SYMBOL

STA. 101+50, (SCHOOL)
 STA. TBD, (SCHOOL), (SEE NOTE 5)

4 - INCH YELLOW LINE

STA. 100+00.00 TO STA. 104+50.00 (DOUBLE CENTERLINE)

REMOVAL AND DISPOSAL OF GUARDRAIL

STA. 101+62 TO STA. 101+84 LT.
 STA. 101+61 TO STA. 101+95 RT.
 STA. 102+47 TO STA. 102+66 LT.
 STA. 102+62 TO STA. 103+14 RT.

COLD PLANING BITUMINOUS PAVEMENT

STA. 100+00.00 TO STA. 100+50.00
 STA. 104+00.00 TO STA. 104+50.00

STONE FILL, TYPE III

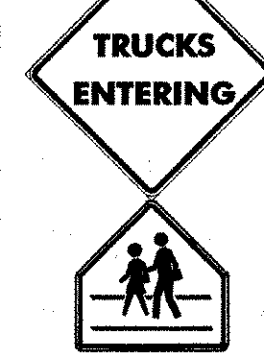
STA. 101+62.6 LT. TO STA. 201+5.3 RT.
 STA. 101+97.4 RT. TO STA. 201+32.7 RT.
 STA. 201+30.6 LT. TO STA. 201+46.9 LT.
 STA. 201+64.2 LT. TO STA. 102+70.0 RT.

8-INCH UNDERDRAIN

STA. 101+25 TO STA. 102+10, RT.



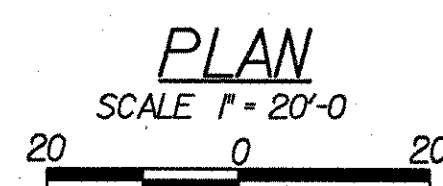
NEW STA. 101+50, RT



REM STA. 101+52



REM STA. 101+62



CONSTRUCTION NOTES

STA. 101+81.6 TO STA. 102+43.7, LT.
 STA. 101+95.3 TO STA. 102+61.4, RT.

HEAVY DUTY STEEL BEAM GUARDRAIL (GALVANIZED)

STA. 101+54.0, 17' LT. TO STA. 101+83.2, 12' LT.
 STA. 102+43.5, 12' LT. TO STA. 102+67.5, 22' LT.
 STA. 101+46.4, 17' RT. TO STA. 101+95.6, 12' RT.
 STA. 102+59.6, 12' RT. TO STA. 103+22.2, 17' RT.

ANCHOR FOR STEEL BEAM RAIL

STA. 101+61, LT.
 STA. 102+64, LT.
 STA. 101+54, RT.
 STA. 103+17, RT.

CONSTRUCT PAVED DRIVE

STA. 101+34, LT.
 STA. 102+82, LT.
 STA. 103+46, LT.

LETTER OR SYMBOL

STA. 101+50, (SCHOOL)
 STA. TBD, (SCHOOL), (SEE NOTE 5)

4 - INCH YELLOW LINE

STA. 100+00.00 TO STA. 104+50.00 (DOUBLE CENTERLINE)

REMOVAL AND DISPOSAL OF GUARDRAIL

STA. 101+62 TO STA. 101+84 LT.
 STA. 101+61 TO STA. 101+95 RT.
 STA. 102+47 TO STA. 102+66 LT.
 STA. 102+62 TO STA. 103+14 RT.

COLD PLANING BITUMINOUS PAVEMENT

STA. 100+00.00 TO STA. 100+50.00
 STA. 104+00.00 TO STA. 104+50.00

STONE FILL, TYPE III

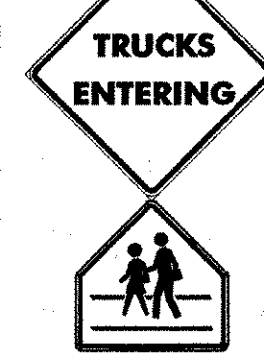
STA. 101+62.6 LT. TO STA. 201+5.3 RT.
 STA. 101+97.4 RT. TO STA. 201+32.7 RT.
 STA. 201+30.6 LT. TO STA. 201+46.9 LT.
 STA. 201+64.2 LT. TO STA. 102+70.0 RT.

8-INCH UNDERDRAIN

STA. 101+25 TO STA. 102+10, RT.



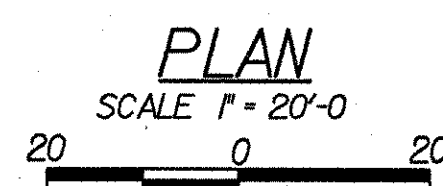
NEW STA. 101+50, RT



REM STA. 101+52



REM STA. 101+62



NOTES

1. THE PROPERTY LINES (P/U) SHOWN ARE APPROXIMATE.
2. ALL TREES WITHIN THE R.O.W. BETWEEN STA. 101+50 LT. TO STA. 102+70 LT. SHALL BE REMOVED. COST SHALL BE INCLUDED IN ITEM 204.10.
3. THE EXISTING SEWER LINE SHALL BE RETAINED.
4. THE LOCATION OF EXISTING WATER LINE WAS BASED ON LIMITED INFORMATION OBTAINED FROM THE TOWN. THE CONTRACTOR SHALL BE RESPONSIBLE FOR DETERMINING THE EXACT LOCATION AND DEPTH OF THE WATER LINE PRIOR TO CONSTRUCTION AND INSURE THAT IT IS NOT DAMAGED DURING CONSTRUCTION. COST SHALL BE INCLUDED IN ITEM 204.20.
5. THE CONTRACTOR SHALL PLACE A "SCHOOL AHEAD" SIGN ASSEMBLY AND ASSOCIATED "SCHOOL" PAVEMENT MARKINGS BETWEEN 150 FEET AND 700 FEET BEYOND STA. 105+00, LT., AS DIRECTED BY THE RESIDENT ENGINEER.
6. WORK WITHIN ARCHEOLOGY AREAS SHALL CONSIST OF A BOX CUT AT THE EDGE OF NEW PAVEMENT, MINOR REGRADING AND TOPSOIL PLACEMENT. NO ADDITIONAL DISTURBANCE OF THESE AREAS SHALL BE PERMITTED. SEE ROADWAY CROSS SECTIONS.

LEGEND

- EXISTING SIGN
- NEW SIGN
- REM REMOVE EXISTING SIGNS & POSTS (SALVAGE TO TOWN)
- R&R REMOVE AND RESET SALVAGED SIGNS
- SMH SEWER MANHOLE
- E&T- TEMPORARY ELECTRIC & TELEPHONE
- CZ- CLEAR ZONE
- AER E&T EXISTING OVERHEAD ELECTRIC & TELEPHONE
- W- EXISTING WATER LINE
- S- EXISTING SEWER LINE

STATE OF VERMONT AGENCY OF TRANSPORTATION

Town Of	WARREN	Bridge No.	7
Highway No.	TH 1	Log Sta.	
		Surv. Sta.	
BROOK ROAD OVER FREEMAN BROOK			
PLAN SHEET			
Designed By	L. WIXSON / S. DELIA	Drawn By	S. MERKMAN
Checked By	R. JOY	Date	02/07
		Bridge Design Supervisor	R. ROONEY
		Date	02/07
PROJECT	WARREN	PROJECT NO.	BHF 0188(7)
I.G.C. Info. m:\549107\Warren\BRIDGE\1nd\2\276.plndgn			
Bridge Sheet No.		Sheet	5 of 36

