

GPS CONTROL POINTS

HVCTRL # 2

STANDARD DISK STAMPED

A-4-9

* N = 588945.6760
* E = 1546907.5030
ELEV. = 894.2570

GENERAL LOCATION, WARREN, VT. OWNERSHIP, JOHN ROTH, P.O. BOX 22, WARREN VT. TO REACH FROM THE INTERSECTION OF VT ROUTES 100 AND 17 IN WAITSFIELD GO SOUTH ALONG VT ROUTE 100 FOR 4.8 MI (7.7 KM) TO THE SKEWED FOUR WAY INTERSECTION OF WEST HILL ROAD (RIGHT) AND MAIN STREET LEFT. TURN LEFT AND GO SOUTH-SOUTHEAST ALONG MAIN ST FOR 0.3 MI TO WARREN VILLAGE AND THE INTERSECTION OF BROOK ROAD LEFT AND THE MARK ON THE RIGHT, OPPOSITE THE INTERSECTION. IT IS ABOUT 0.05 MI NORTH OF THE WARREN COUNTRY STORE. THE MARK IS A US DEPARTMENT OF AGRICULTURE DISK SET IN THE NORTH END (NOT THE HIGHEST POINT) OF A MASSIVE 9.8 FT X 39.4 FT ROCK OUTCROP WHICH PROJECTS ABOUT 3 M (9.8 FT) ABOVE GROUND SURFACE. NOTE, MARK MAY BE COVERED BY A CREEPING JUNIPER. IT IS 8.9 M (29.2 FT) WEST OF AND ABOUT 0.8 M (2.6 FT) HIGHER THAN THE CENTERLINE OF MAIN STREET, 36.1 FT SOUTH OF THE SOUTHEAST CORNER OF A 1+1/2 STORY HOUSE, 11.1 M (36.4 FT) NORTH OF POLE NO. 40K/56, AND 1.5 M (4.9 FT) SOUTH OF THE NORTH END OF THE OUTCROP

* TO ALLOW THE STATE PLANE COORDINATES TO FIT THE AGENCY DESIGN PLANE, SUBTRACT 500,000 FROM THE NORTHING AND SUBTRACT 1,500,000 FROM THE EASTING.
* DESCRIPTION PROVIDED BY VERMONT AGENCY OF TRANSPORTATION GEODETIC SURVEY UNIT

HCTRL # 1A

STANDARD DISK STAMPED

MAY SNOW

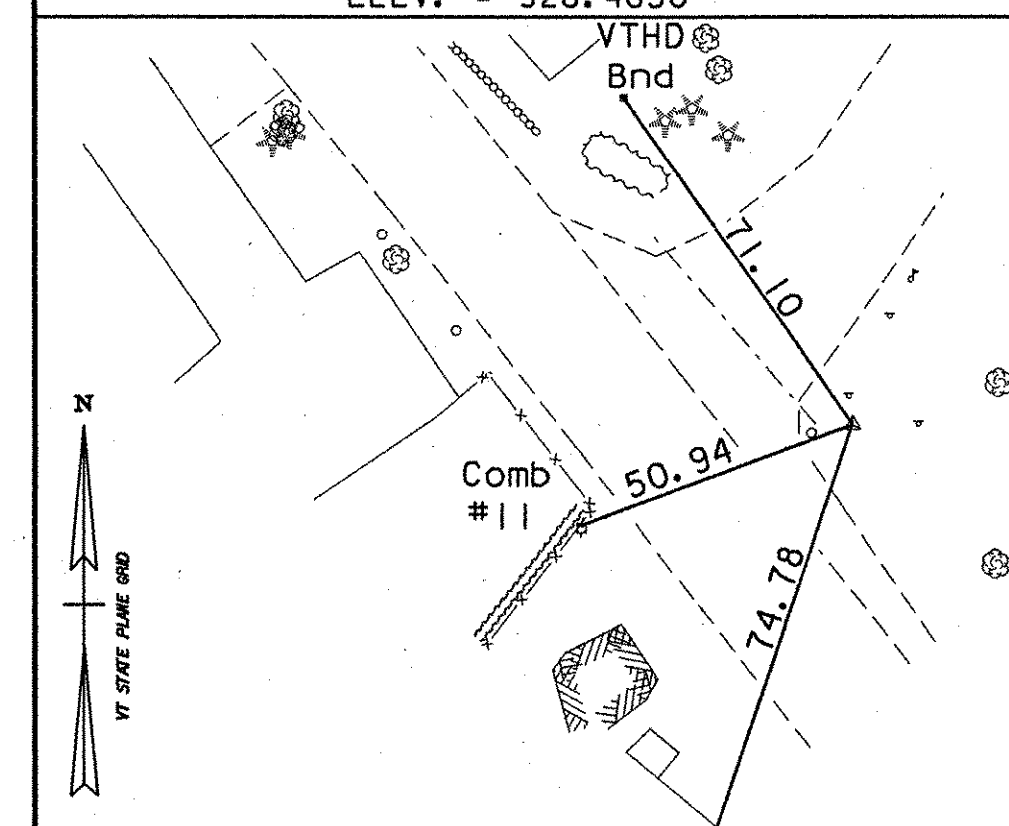
* N = 585506.1977
* E = 1545897.2560
ELEV. =

GENERAL LOCATION, WARREN, VERMONT. TO REACH FROM THE INTERSECTION OF VERMONT ROUTES 100 AND 17 IN WAITSFIELD GO SOUTH ALONG ROUTE 100 FOR 5.7 MI (9.2 KM) TO THE SOUTHERN INTERSECTION OF MAIN STREET LEFT AND THE MARK ON THE LEFT. THE MARK IS SET FLUSH IN A STEP OF A LARGE LEDGE CUT. IT IS 12.8 M (42.0 FT) EAST OF AND ABOUT 2.0 M (6.6 FT) HIGHER THAN THE CENTERLINE ROUTE 100, 17.6 M (57.7 FT) SOUTH OF THE CENTERLINE OF MAIN STREET, 27.5 M (90.2 FT) SOUTHWEST OF POLE NO. 86, AND 3.7 M (12.1 FT) SOUTH OF A FIBERGLASS WITNESS POST.

1/400'
FEET

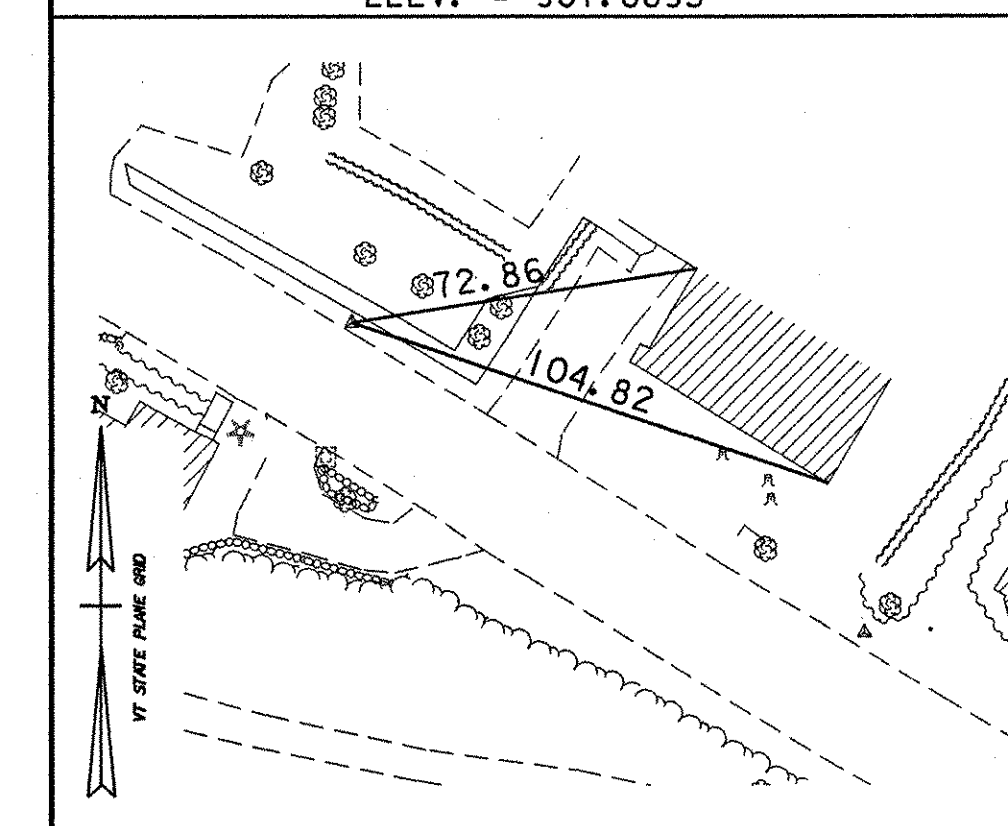
***HVCTRL 5**

N = 88230.8164
E = 48204.1410
ELEV. = 928.4850



HVCTRL 20 **

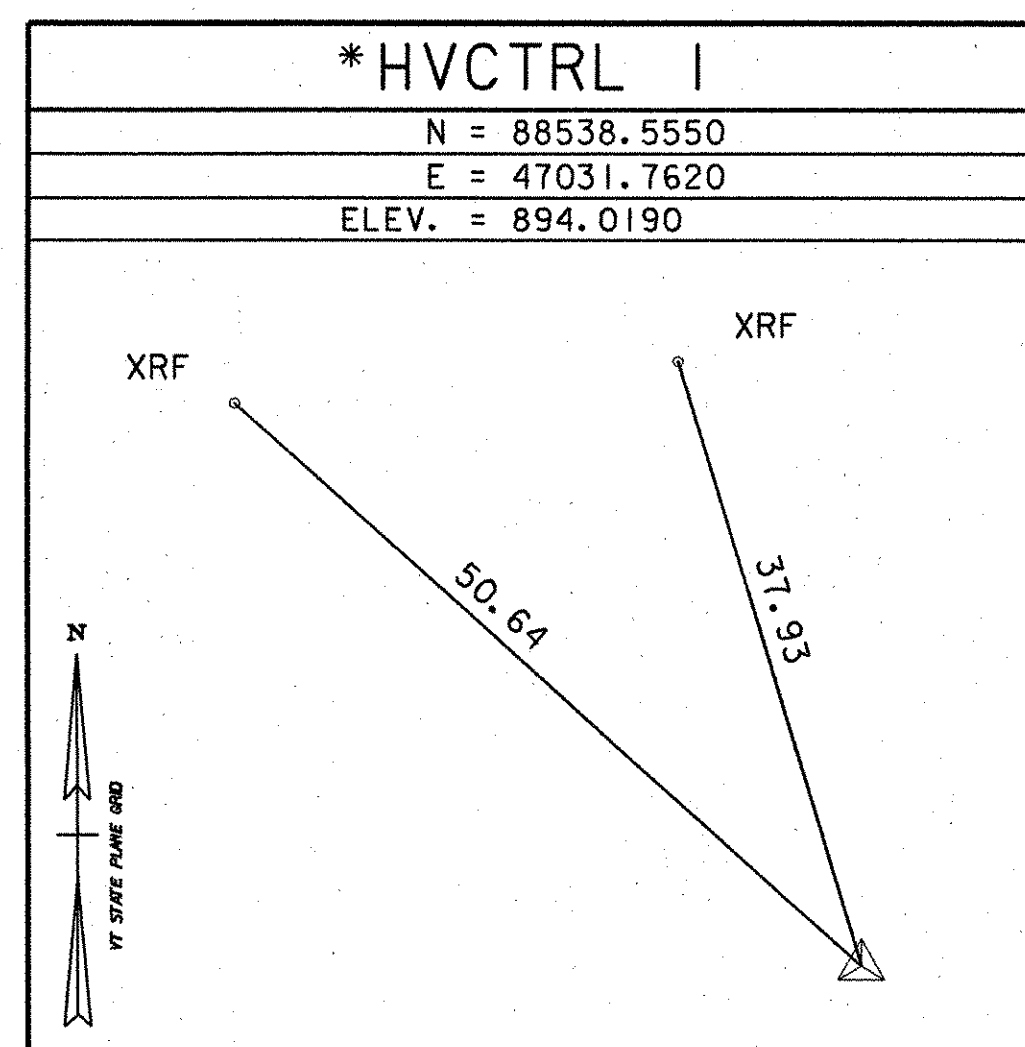
N = 88586.0169
E = 47756.5407
ELEV. = 907.8893



TRAVERSE TIES

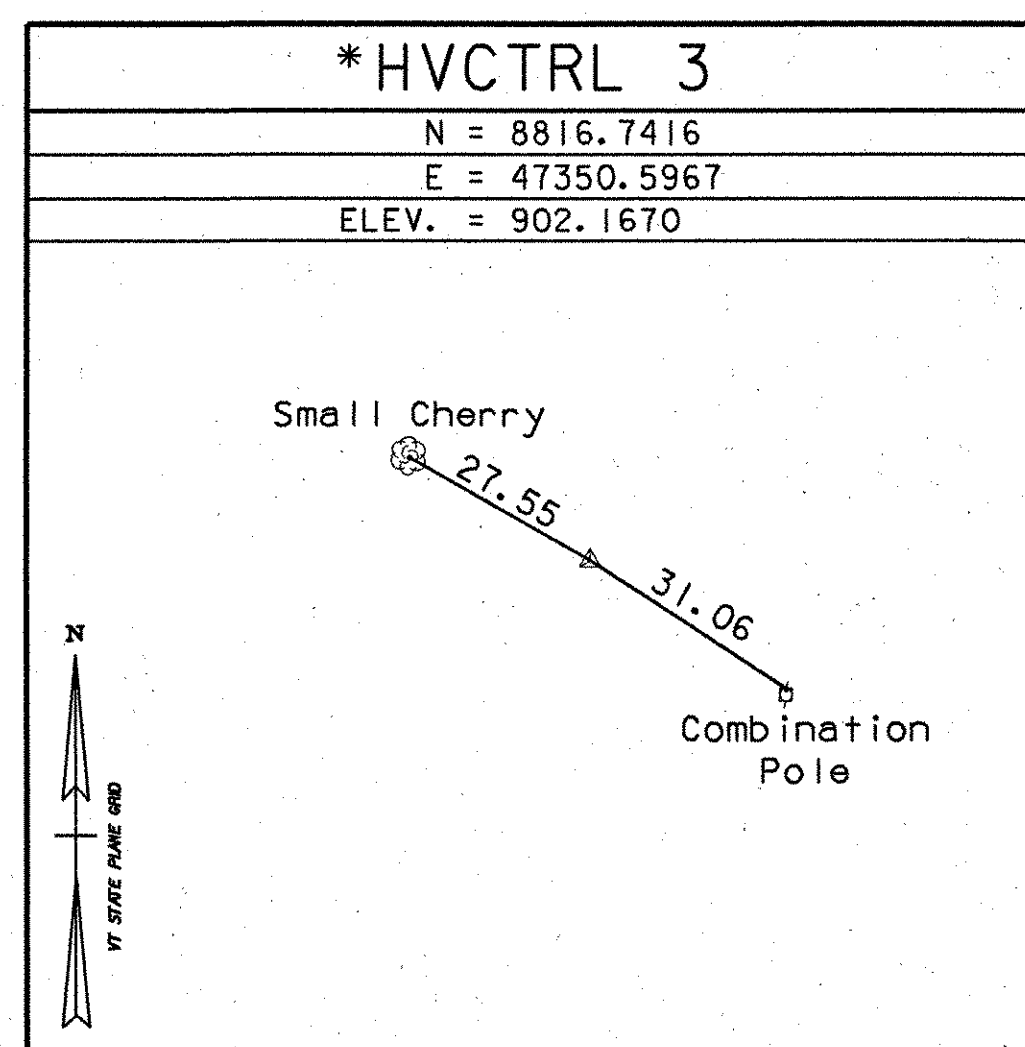
***HVCTRL 1**

N = 88538.5550
E = 47031.7620
ELEV. = 894.0190



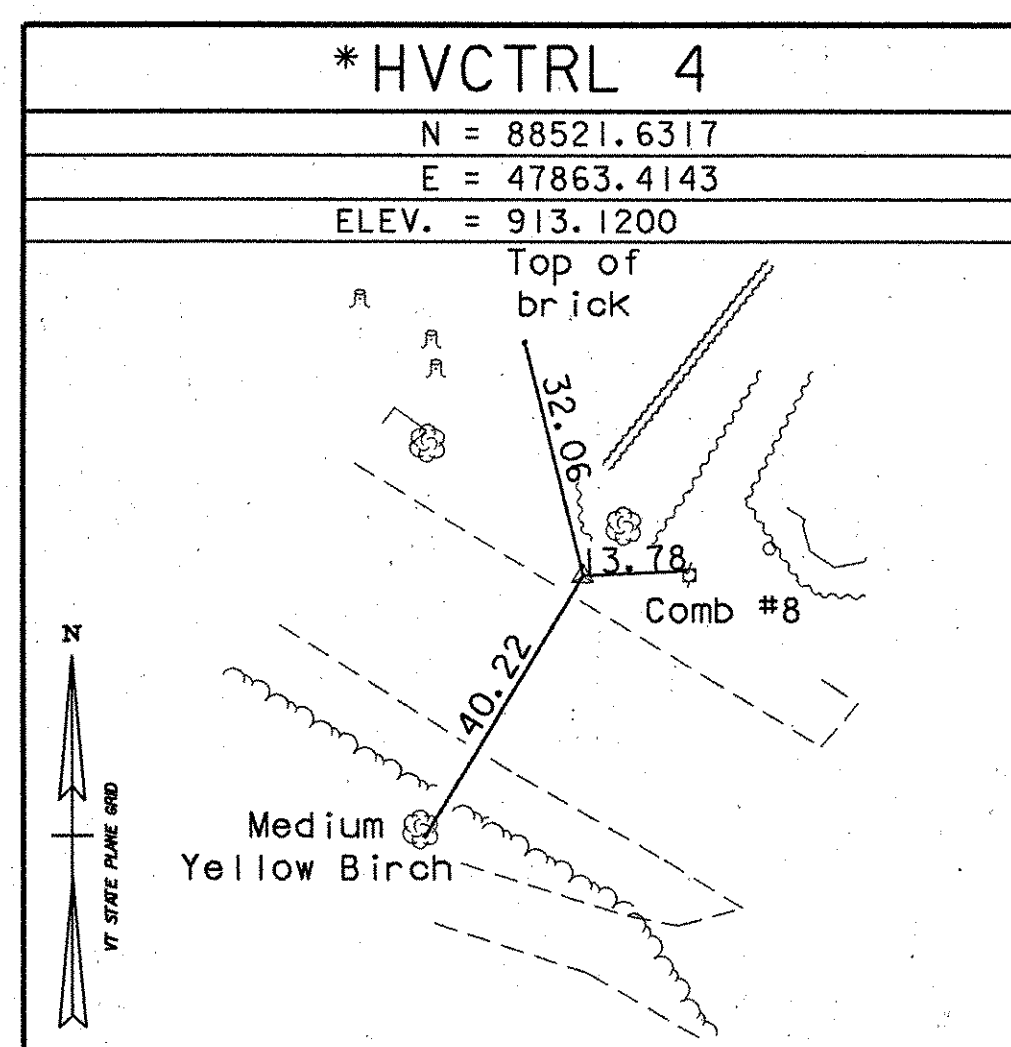
***HVCTRL 3**

N = 8816.7416
E = 47350.5967
ELEV. = 902.1670



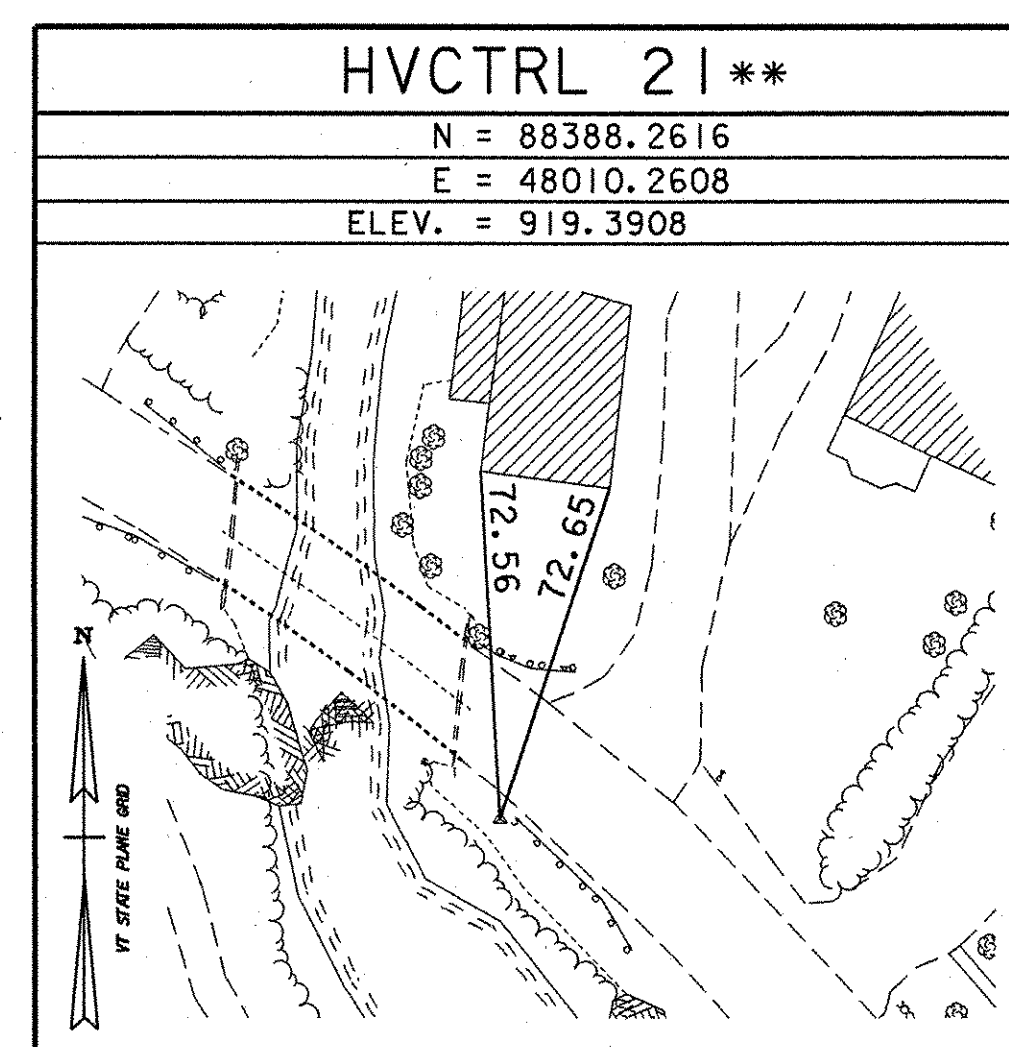
***HVCTRL 4**

N = 88521.6317
E = 47863.4143
ELEV. = 913.1200



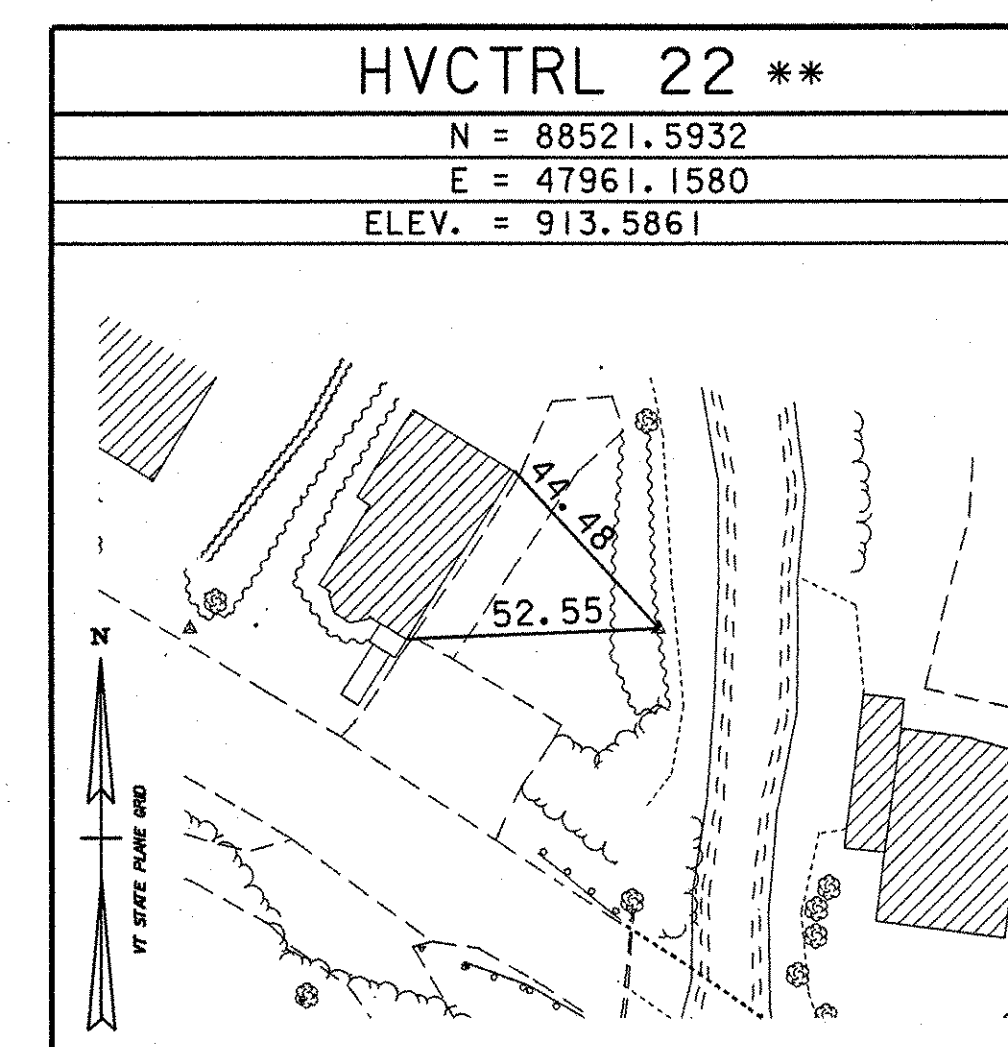
HVCTRL 21 **

N = 88388.2616
E = 48010.2608
ELEV. = 919.3908



HVCTRL 22 **

N = 88521.5932
E = 47961.1580
ELEV. = 913.5861



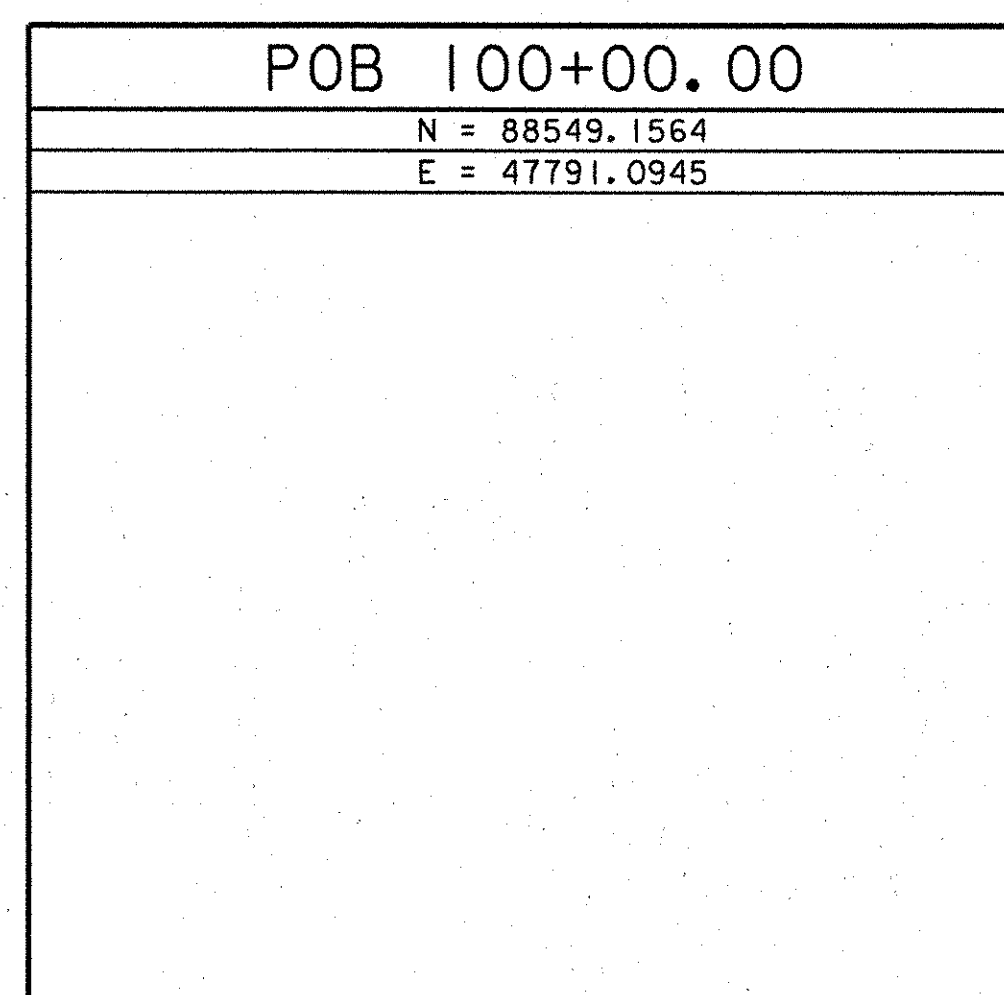
* MAIN TRAVERSE COMPLETED OCTOBER 26, 2000 BY L. ORVIS AND J. HULETT

** CONTROLS PROVIDED FOR REFERENCE.

ALIGNMENT TIES

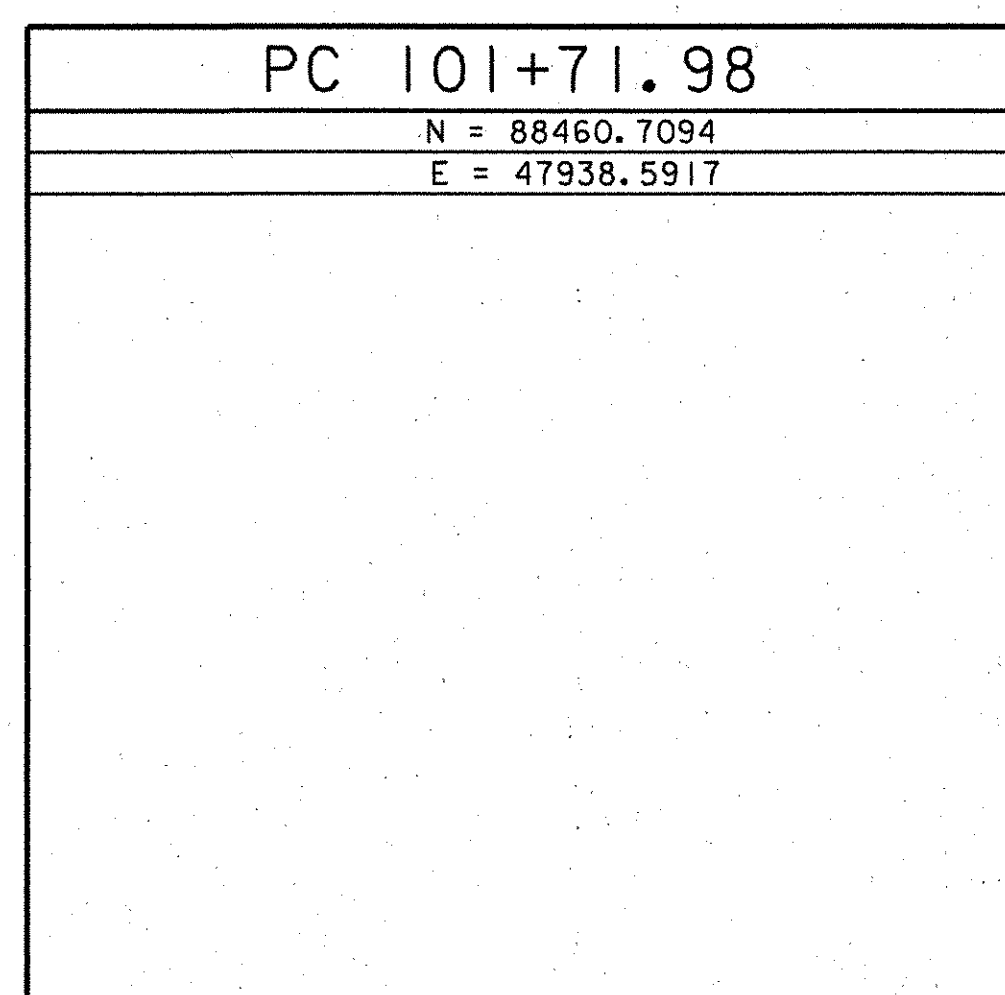
POB 100+00.00

N = 88549.1564
E = 47791.0945



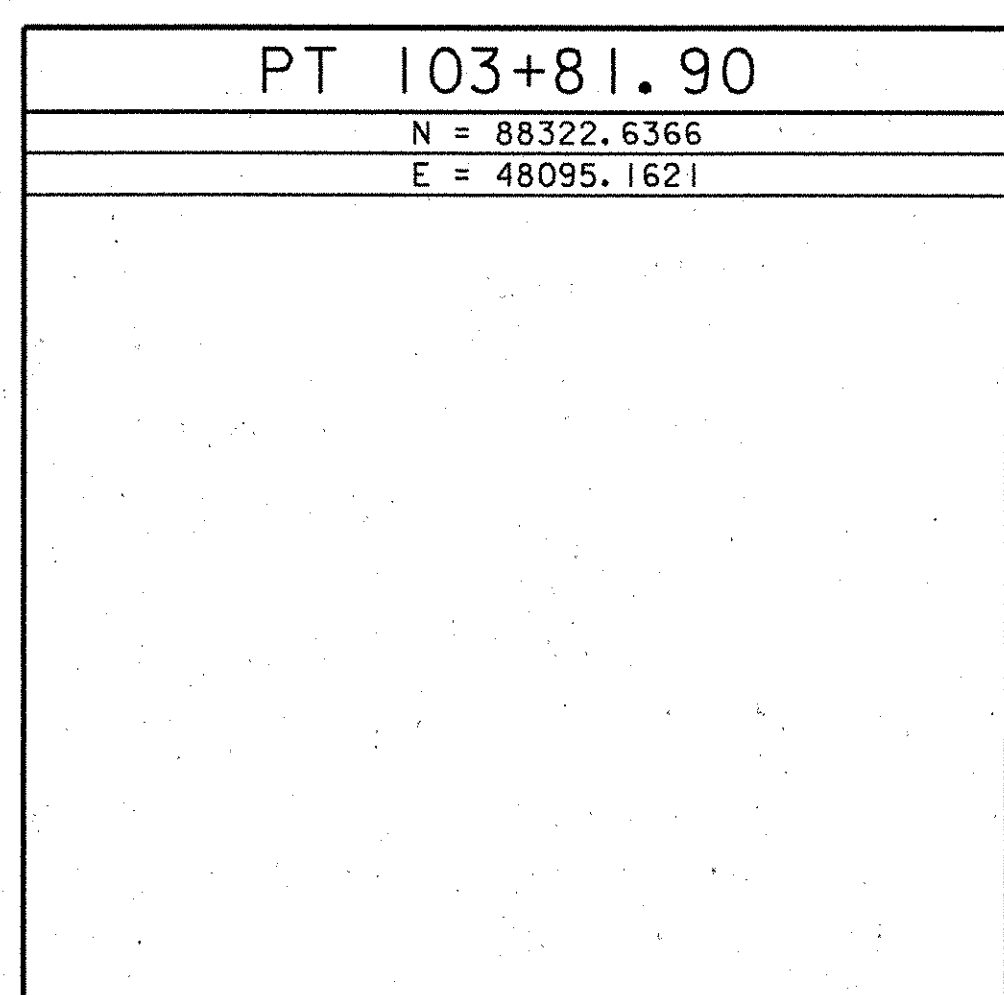
PC 101+71.98

N = 88460.7094
E = 47938.5917



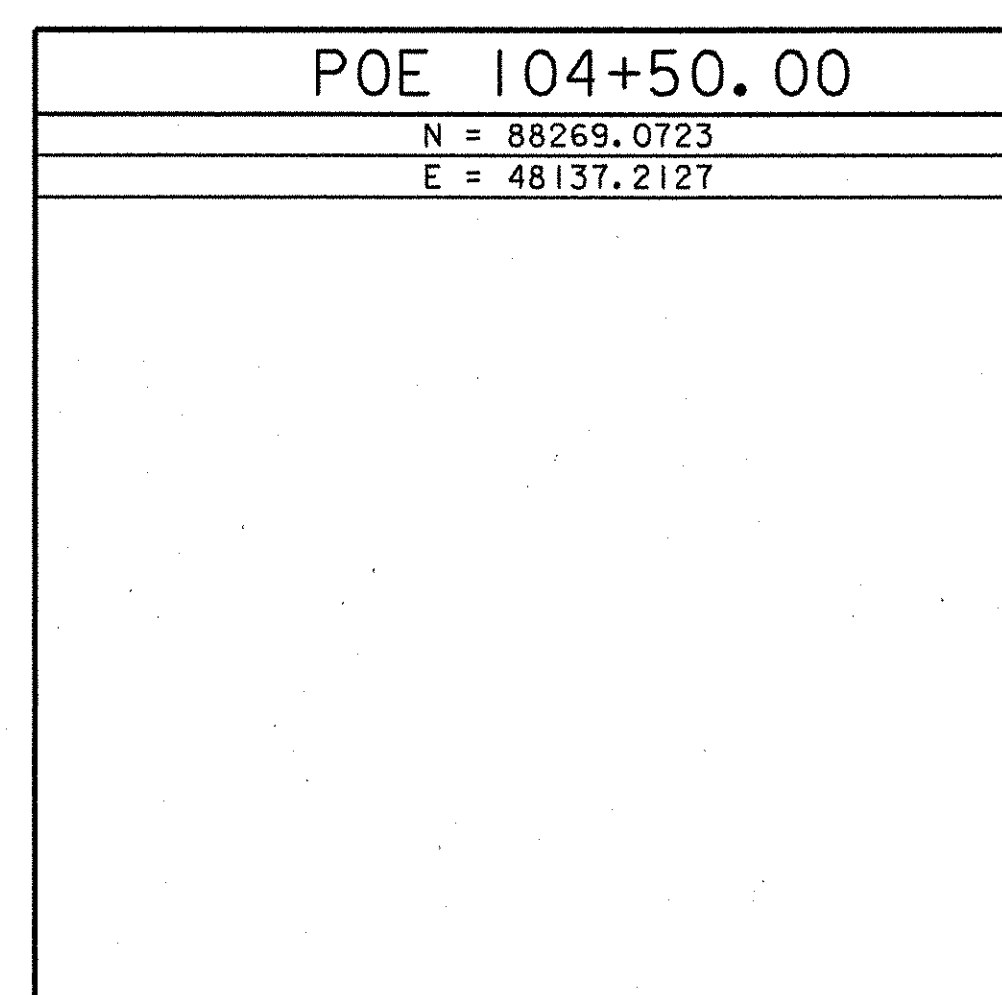
PT 103+81.90

N = 88322.6366
E = 48095.1621



POE 104+50.00

N = 88269.0723
E = 48137.2127



DATUM
VERTICAL NAVD 88
HORIZONTAL NAD 83(96)
ADJUSTMENT NONE

ALIGNMENT STAKED BY:

NOTES

1. ALIGNMENT TIES TO BE PROVIDED BY VTRANS.

**STATE OF VERMONT
AGENCY OF TRANSPORTATION**

Town Of	WARREN	Bridge No.	7
Highway No.	TH 1	Log Sta.	
		Surv. Sta.	
BROOK ROAD OVER FREEMAN BROOK			
TIE SHEET			
Designed By	VTRANS	Drawn By	R. BULLOCK / S. DELIA
Checked By	R. JOY	Date	02/07
		Bridge Design Supervisor	R. ROONEY Date 02/07
PROJECT	WARREN	PROJECT NO.	BHF 0188(7)
I.G.C. Info. m\549107-Warren\BRIDGE\Tie\Tie.dgn			
Bridge Sheet No.		Sheet	4 of 36

