

END POST
CONNECTION ELEVATION

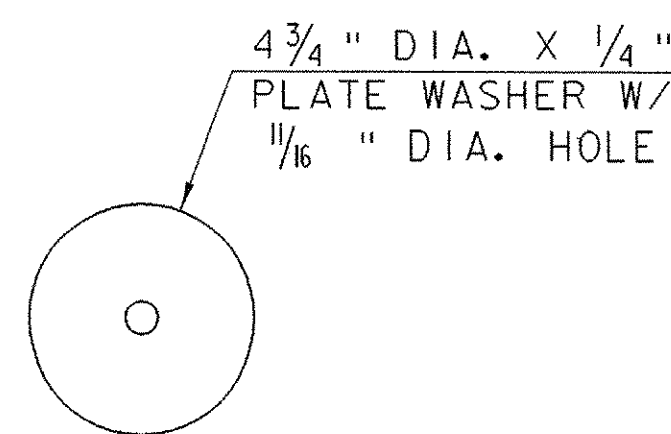
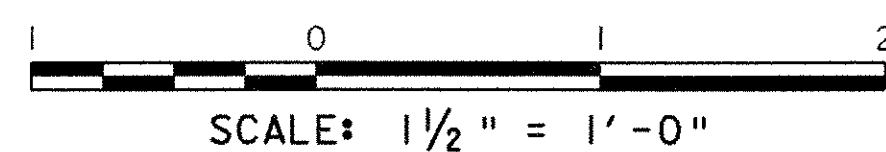
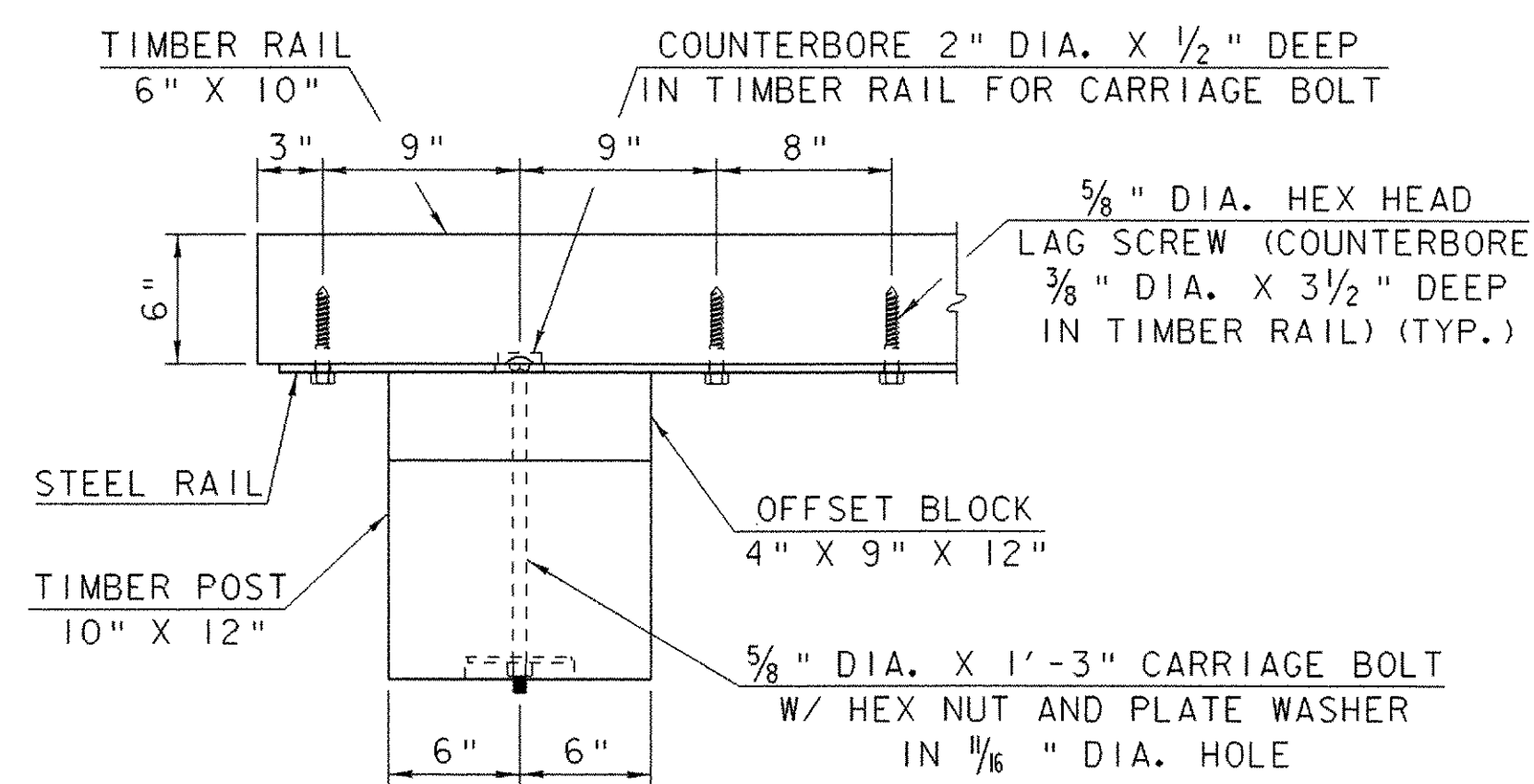
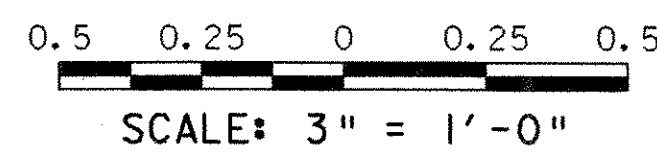
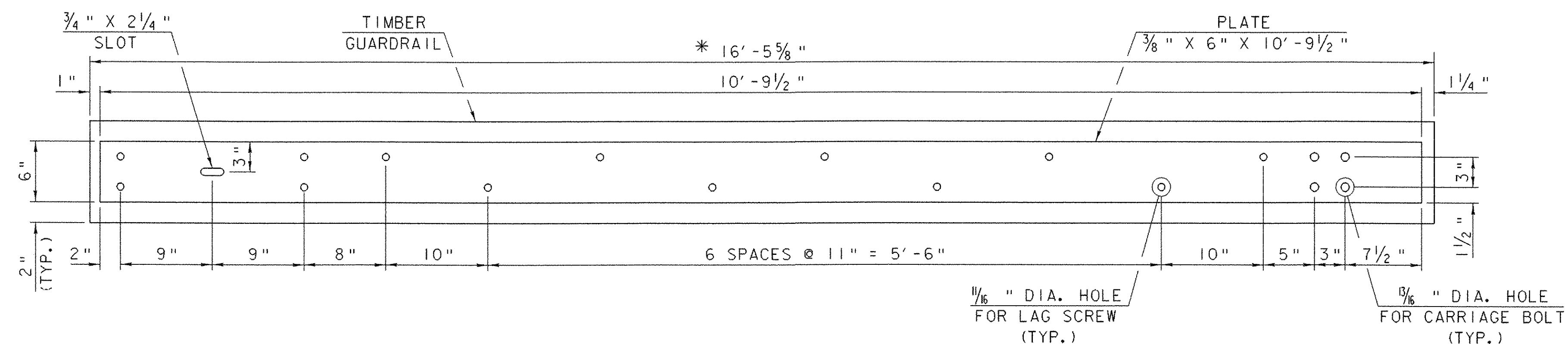
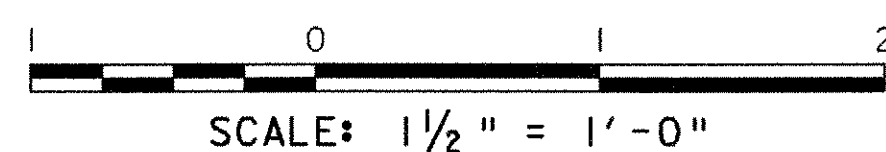


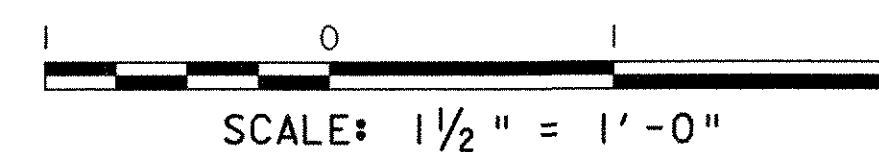
PLATE WASHER DETAIL



END POST
CONNECTION PLAN



END STEEL PLATE DETAIL
FOR 10'-0" POST SPACING



NOTES

1. THE STEEL BACKED TIMBER GUARDRAIL SHALL BE PAID FOR UNDER ITEM 621.18, "STEEL BACKED TIMBER GUARDRAIL". THE QUANTITY MEASURED FOR PAYMENT SHALL BE ALONG THE FACE OF THE RAIL. THE ORDINARY POST SPACING SHALL BE 10'-0". IN LOCATIONS WHERE POST SPACING IS DETAILED AT 5'-0", THE QUANTITY FOR PAYMENT SHALL BE FACTORED BY 1.4.
2. DRIVE POSTS INTO PILOT HOLES THAT ARE PUNCHED OR DRILLED. THE DIMENSIONS OF THE PILOT HOLE SHALL NOT EXCEED THE DIMENSIONS OF THE POST BY MORE THAN ONE INCH. SET THE POSTS PLUMB, BACKFILL AND COMPACT.
3. IF AN IMPENETRABLE HOLE IS ENCOUNTERED WHILE PLACING POSTS, ENLARGE THE HOLE TO PROVIDE NOT LESS THAN SIX INCHES CLEARANCE ON ALL SIDES AND TO A MINIMUM DEPTH OF 2'-6". SET THE POST IN CONCRETE TO WITHIN SIX INCHES OF THE TOP OF THE HOLE. BACKFILL AND COMPACT THE REMAINING SIX INCHES WITH AN ACCEPTABLE MATERIAL.
4. THE TIMBER POSTS, BLOCKOUTS, AND RAIL ELEMENTS SHALL CONFORM TO SECTION 728.01 AND 728.02 OF THE STANDARD SPECIFICATIONS FOR CONSTRUCTION. IN ADDITION, ALL TIMBER USED IN THE RAIL SHALL HAVE A MINIMUM ALLOWABLE BENDING STRESS OF 1450 PSI.
5. FIELD CUT TIMBER RAILS TO PRODUCE A CLOSE FIT AT ALL JOINTS. TREAT FIELD CUTS WITH TWO COATS OF COPPER NAPHTHENATE SOLUTION.
6. THE STEEL PLATES AND SPLICE PLATES SHALL CONFORM TO AASHTO M 27M/ M 270 GRADE 50W (WEATHERING STEEL).
7. ALL BOLTS AND LAG SCREWS SHALL CONFORM TO ASTM A 307 GRADE A. ALL WASHERS SHALL CONFORM TO ASTM F 844. ALL NUTS SHALL CONFORM TO ASTM A 27. ALL FASTENER HARDWARE SHALL BE GALVANIZED ACCORDING TO AASHTO M 232.
8. THE FABRICATOR OF THE STEEL PLATES AND SPLICE PLATES SHALL SUBMIT FABRICATION DRAWINGS TO THE STRUCTURES SECTION FOR APPROVAL IN ACCORDANCE WITH SECTION 506.04 OF THE STANDARD SPECIFICATIONS FOR CONSTRUCTION.

STEEL BACKED TIMBER
GUARDRAIL DETAILS (I)

* DIMENSION IS MEASURED ALONG BACK FACE OF TIMBER RAIL FOR 10'-0" POST SPACING. SEE "Y" VALUE IN TABLES AND DETAIL "A" ON NEXT SHEET TO ADD/SUBTRACT FROM TIMBER RAIL DIMENSION TO ACHIEVE FRONT FACE OF RAIL LENGTH AND ESTABLISH CUTTING ANGLE.

PROJECT NAME:	SALISBURY - CORNWALL	PLOT DATE:	02-APR-2007
PROJECT NUMBER:	BHO 1445 (27)	DRAWN BY:	G. ROY
FILE NAME:	96j268\Structures\sj268gr1.i	CHECKED BY:	C. CARLSON
PROJECT MANAGER:	R. WHITCOMB	SHEET	44 OF 60
DESIGNED BY:	G. ROY		