

CONSTRUCT DRIVE WITH 5' PAVED APRON

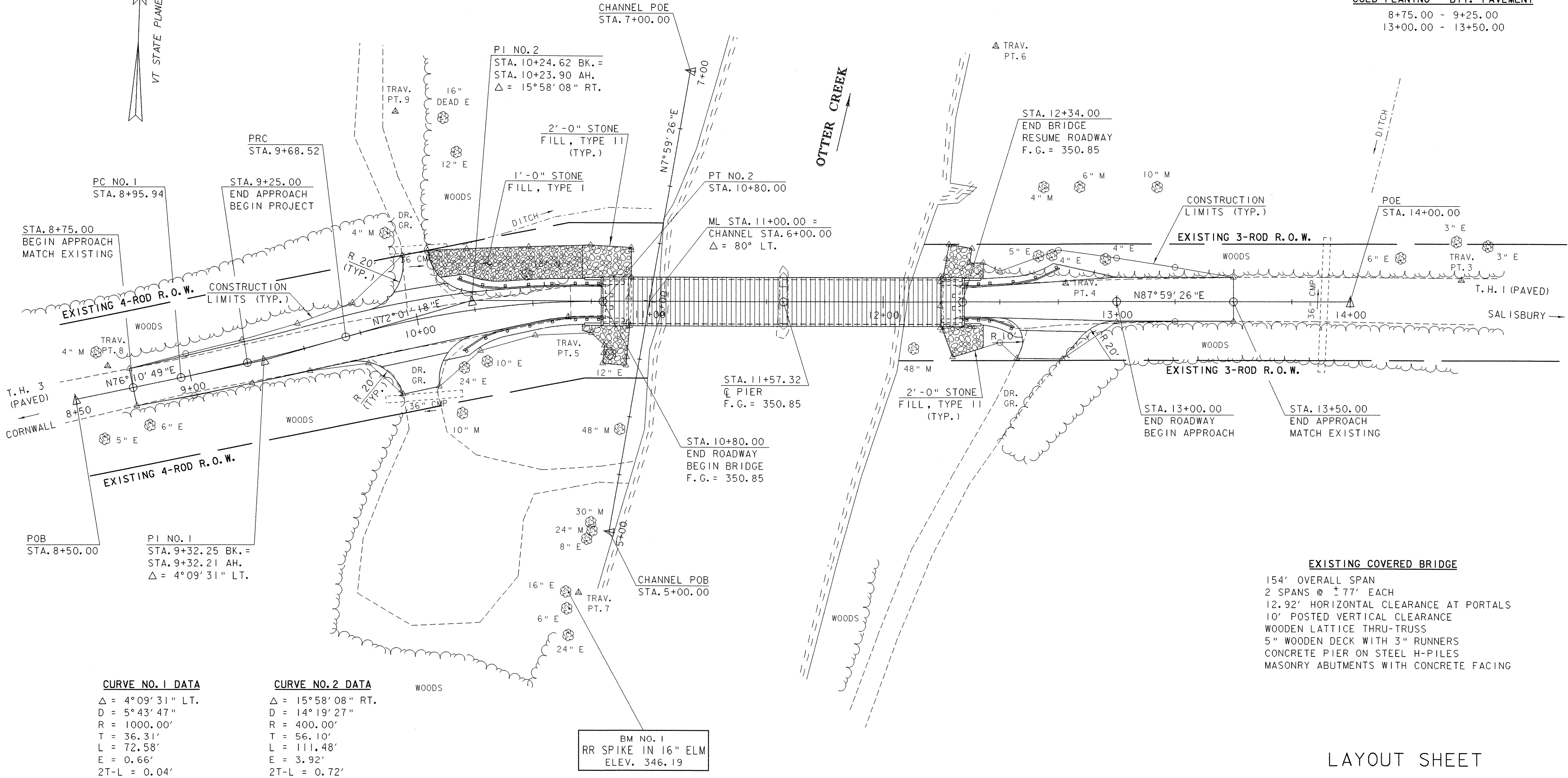
9+94.4 RT.
10+04.3 LT.
12+72.4 RT.

STEEL BACKED TIMBER GUARDRAIL

10+17.3 RT. - 10+83.0 RT.
10+19.5 LT. - 10+83.0 LT.
12+31.0 RT. - 12+56.2 RT.
12+31.0 LT. - 12+75.6 LT.

COLD PLANING - BIT. PAVEMENT

8+75.00 - 9+25.00
13+00.00 - 13+50.00



CURVE NO. 1 DATA

$\Delta = 4^{\circ}09'31''$ LT.
D = 5'43'47"
R = 1000.00'
T = 36.31'
L = 72.58'
E = 0.66'
2T-L = 0.04'
BANKING = VARIES

CURVE NO. 2 DATA

$\Delta = 15^{\circ}58'08''$ RT.
D = 14'19'27"
R = 400.00'
T = 56.10'
L = 111.48'
E = 3.92'
2T-L = 0.72'
BANKING = VARIES

EXISTING COVERED BRIDGE

154' OVERALL SPAN
2 SPANS @ $\pm 77'$ EACH
12.92' HORIZONTAL CLEARANCE AT PORTALS
10' POSTED VERTICAL CLEARANCE
WOODEN LATTICE THRU-TRUSS
5" WOODEN DECK WITH 3" RUNNERS
CONCRETE PIER ON STEEL H-PILES
MASONRY ABUTMENTS WITH CONCRETE FACING

LAYOUT SHEET

PROJECT NAME:	SALISBURY - CORNWALL
PROJECT NUMBER:	BHO 1445 (27)
FILE NAME:	96j268\structures\sj268i01.i
PROJECT MANAGER:	R. R. WHITCOMB
DESIGNED BY:	G. ROY
PLOT DATE:	02-APR-2007
DRAWN BY:	G. ROY
CHECKED BY:	C. CARLSON
SHEET	8 OF 60

