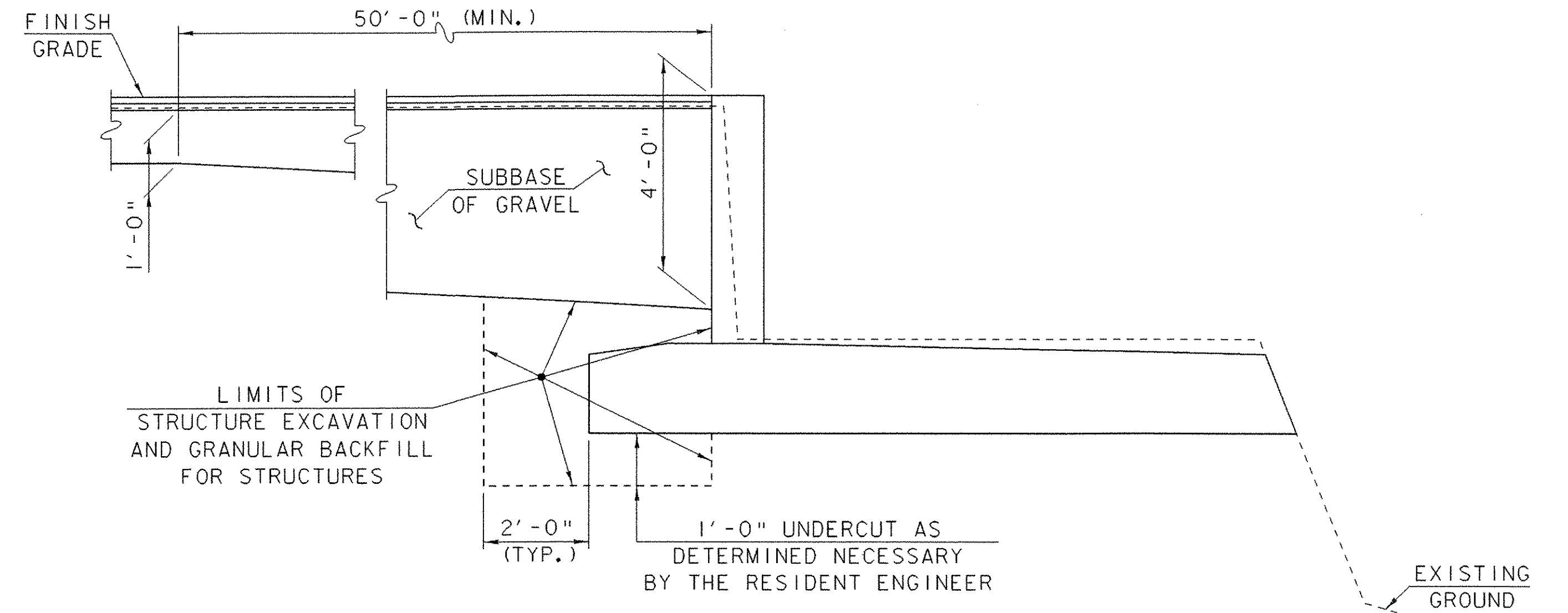
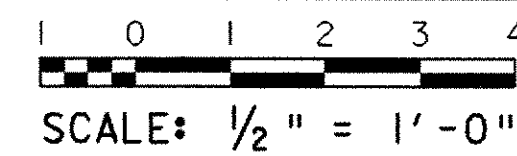
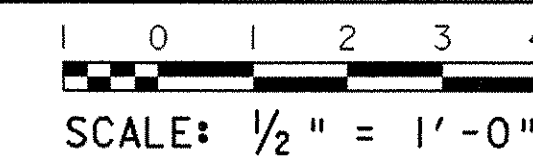


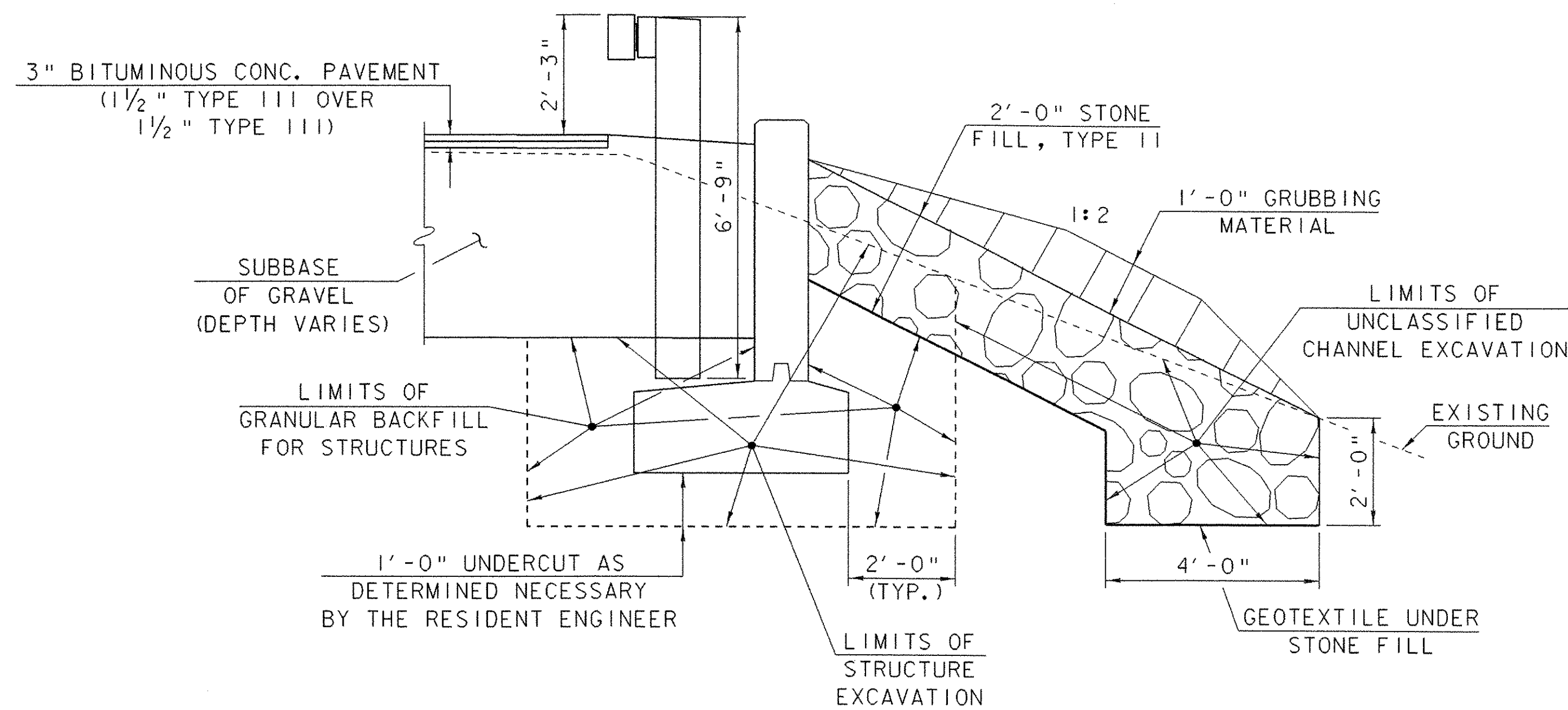
ROADWAY TYPICAL SECTION



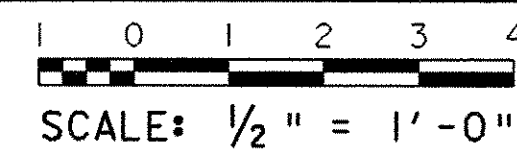
ABUTMENT TYPICAL SECTION



SEE SHEET 35 FOR LIMITS OF "PARTIAL REMOVAL OF STRUCTURE" AT THE ABUTMENTS.



WINGWALL TYPICAL SECTION



SCOPE OF WORK
CONTRACTOR TO DETERMINE EXACT SEQUENCE OF REPAIR WORK

1. INSTALL APPROPRIATE SIGNING AND CLOSE ROAD.
2. REHABILITATION OF EXISTING ABUTMENT NO. 1.
3. REHABILITATION OF EXISTING ABUTMENT NO. 2.
4. COMPLETE REPLACEMENT OF EXISTING TRUSS FLOOR SYSTEM, WITH NEW FLOORBEAMS, DECKING, CURBS AND LOWER LATERAL BRACING.
5. ADD NEW 8" X 12" VERTICAL POSTS AND BOLSTER BEAMS AT PIER.
6. PARTIAL REPLACEMENT OF EXISTING TRUSS MEMBERS OR ADDITION OF NEW LATTICE MEMBERS.
7. ADD NEW 2" X 8" AND 2" X 6" LONGITUDINALS BETWEEN LOWER TOP CHORD AND UPPER BOTTOM CHORD ON EACH TRUSS.
8. COMPLETE REMOVAL OF SIDING AND REPLACEMENT WITH NEW BOARDS.
9. OTHER MISCELLANEOUS TIMBER REPAIRS.
10. REPLACE ROOF RAFTERS, BOARDS, AND STANDING SEAM METAL ROOF.
11. APPROACH ROADWAY WORK, INCLUDING INSTALLATION OF GUARDRAIL AND SIGNING.
12. REMOVAL OF CHANNEL DEBRIS AT PIER.

EARTHWORK TYPICAL SECTIONS

MATERIAL ITEM	TOLERANCE
PAVEMENT	± 1/4" TOTAL THICKNESS
SUBBASE	± 1"

PROJECT NAME: SALISBURY - CORNWALL	PLOT DATE: 02-APR-2007
PROJECT NUMBER: BHO 1445 (27)	DRAWN BY: G. ROY
FILE NAME: 96j268\Structures\sj268e+ts.1	CHECKED BY: C. CARLSON
PROJECT MANAGER: R. R. WHITCOMB	SHEET 4 OF 60
DESIGNED BY: G. ROY	