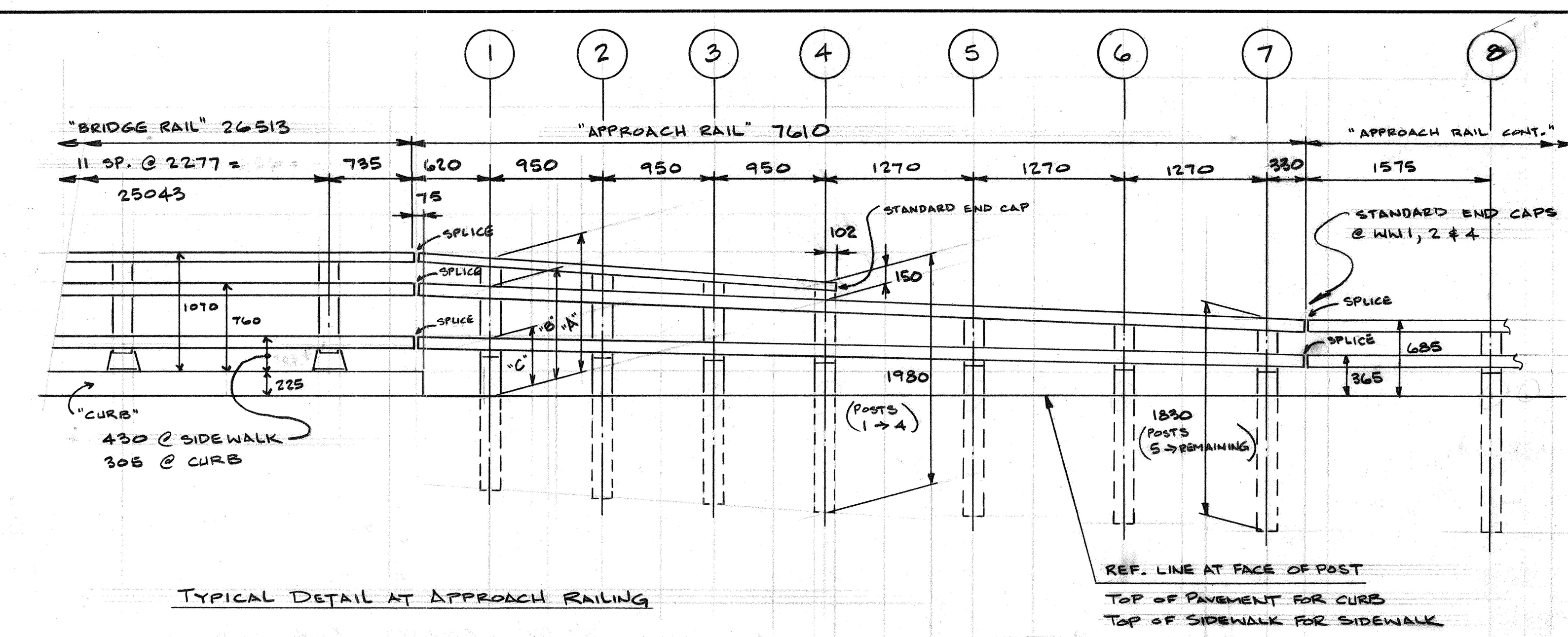


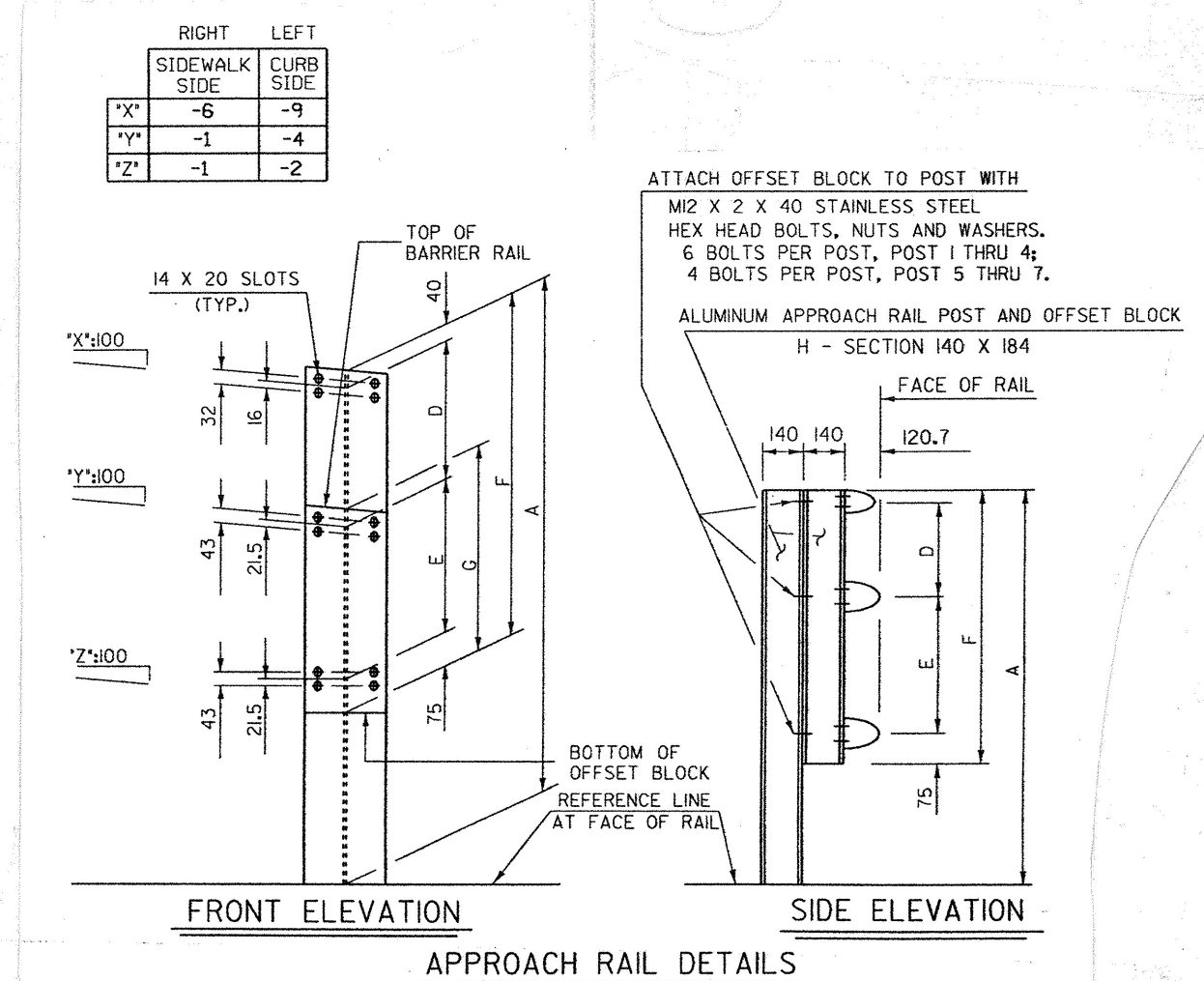
PLAN - BRIDGE 48



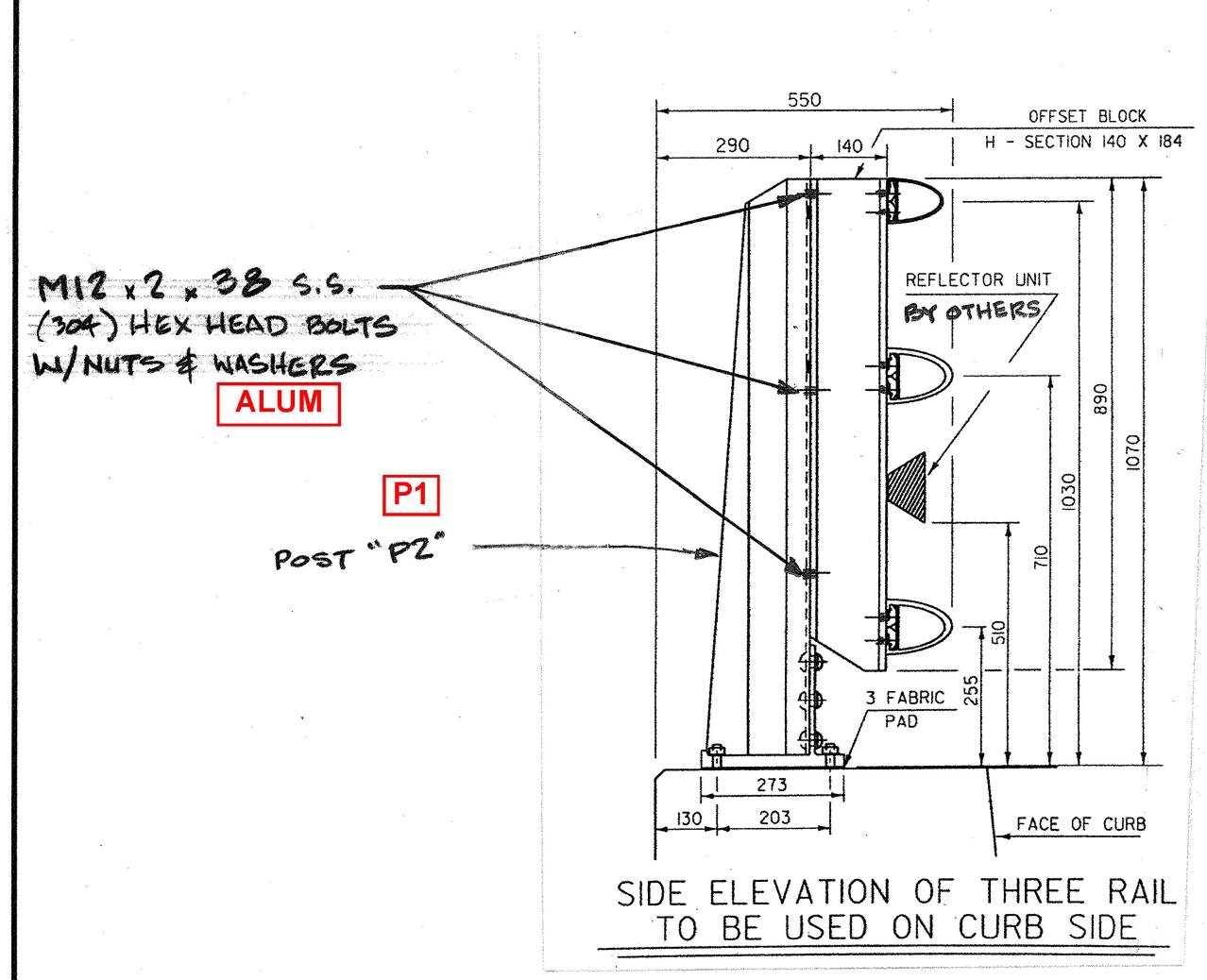
TYPICAL DETAIL AT APPROACH RAILING

ALUMINUM APPROACH RAIL RAIL DIMENSIONS FOR A CURB CONDITION								ALUMINUM APPROACH RAIL RAIL DIMENSIONS FOR A SIDEWALK CONDITION							
POST NO.	A	B	C	D	E	F	G	POST NO.	A	B	C	D	E	F	G
1	1241	959	516	293	444	851	-	1	1035	754	424	293	329	737	-
2	1058	920	494	249	426	789	-	3	928	734	408	205	327	646	-
3	1075	881	473	205	408	728	-	4	874	724	399	162	325	601	-
4	992	842	451	162	391	667	-	5	-	71	388	-	323	-	449
5	-	790	423	-	367	-	493	6	-	698	376	-	322	-	448
6	-	737	394	-	344	-	470	7	-	685	365	-	320	-	446
7	-	685	365	-	320	-	446								

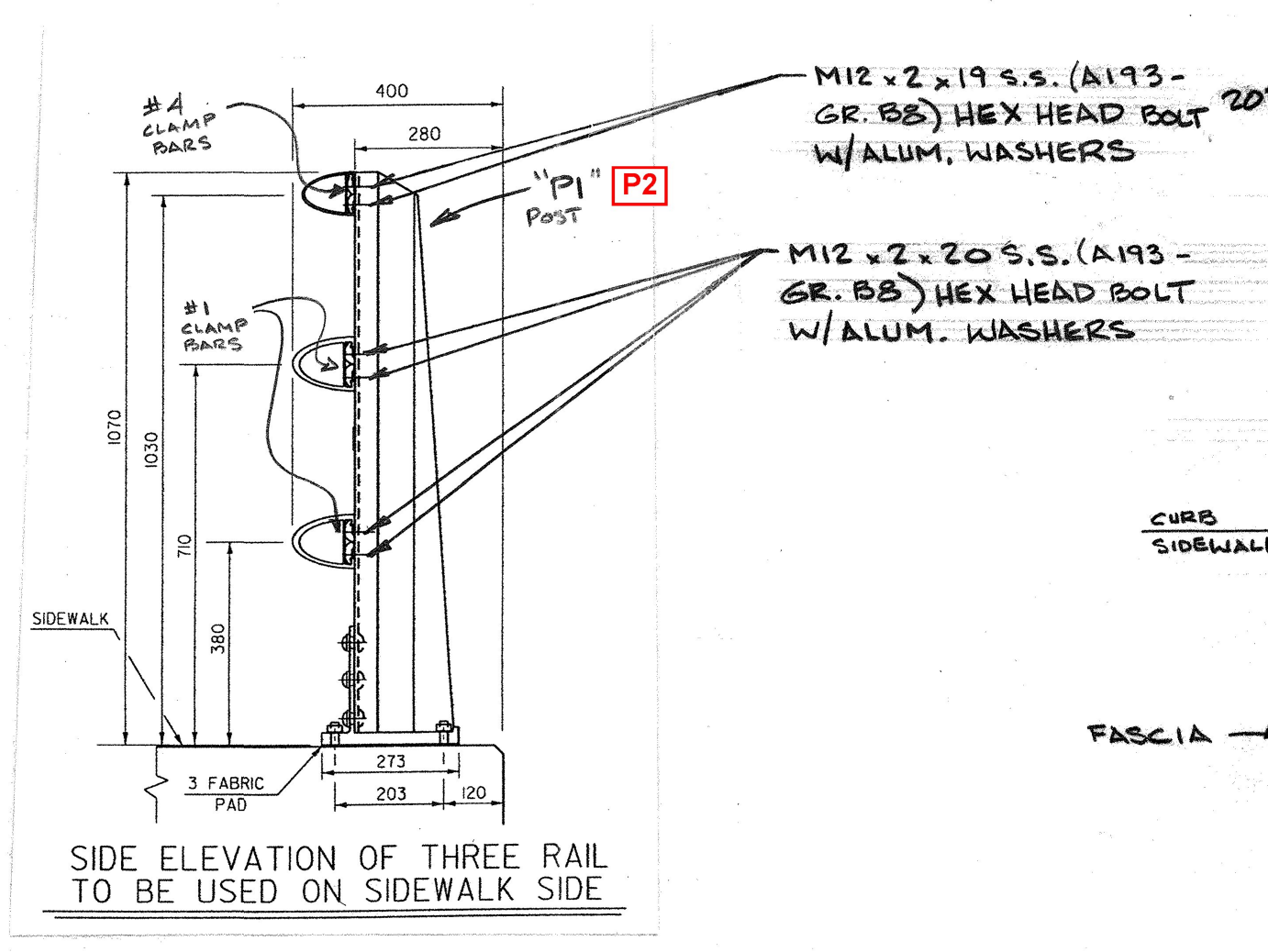
ALL REMAINING POSTS ARE TO HAVE THE SAME DIMENSIONS AS POST NO. 7



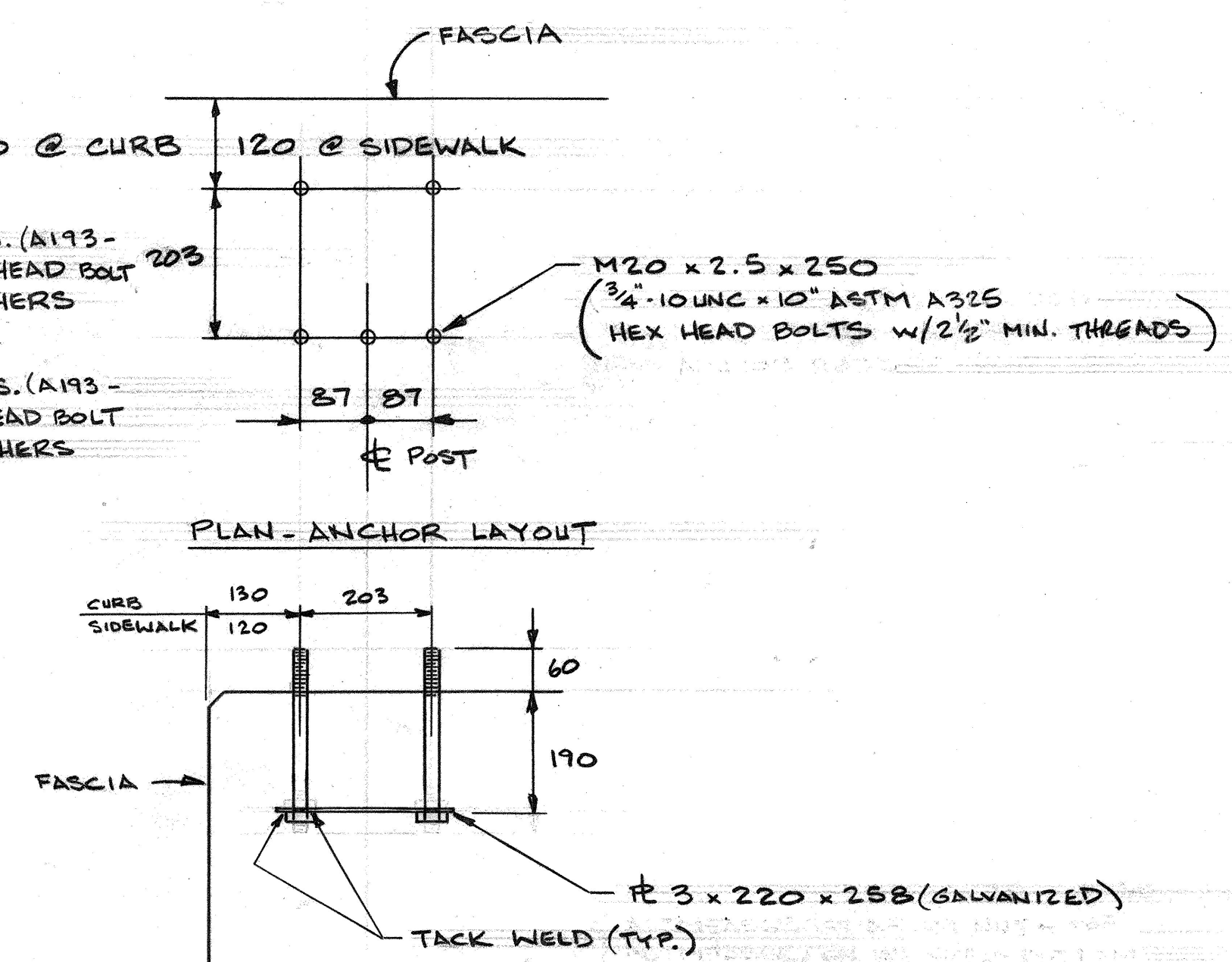
APPROACH RAIL DETAILS



SECTION A



SECTION B (SPINDLE PANEL NOT SHOWN FOR CLARITY)



SECTION - ANCHOR ASSEMBLY

STATE OF VERMONT
AGENCY OF TRANSPORTATION
RECEIVED 08/20/2009
CK BY THL OK BY WDL
ACTION APPROVED AS NOTED
BY CWC DATE 08/26/2009

AUCIELLO IRON WORKS INC 560 MAIN ST. HUDSON, MA (978) 568-8382			
VERMONT AGENCY OF TRANSPORTATION TOWN OF LINCOLN COUNTY OF ADDISON ROUTE NO.: T.H. 9 CL 3 BRIDGE No.: 48 PROJECT No.: BRO 1445 (25)			
ALUMINUM BRIDGE RAILING W/APPROCH.			
SURFACE PREP: NONE		FINISH: ANODIZED - BLACK SATIN FINISH	
FOR: F.R. LAFAYETTE, INC.			
DR: PFD 5/16/09		DWG. NO.	
CHK: LJM 5/12/09		BR-2959	
JOB NO.			
1	8.12.09	FOR APPROVAL	
ISSUE	DATE	DESCRIPTION	BY
			AB97048-1001 SHEET 1-EI OF 4

ALL DIMENSIONS ARE IN MILLIMETRES