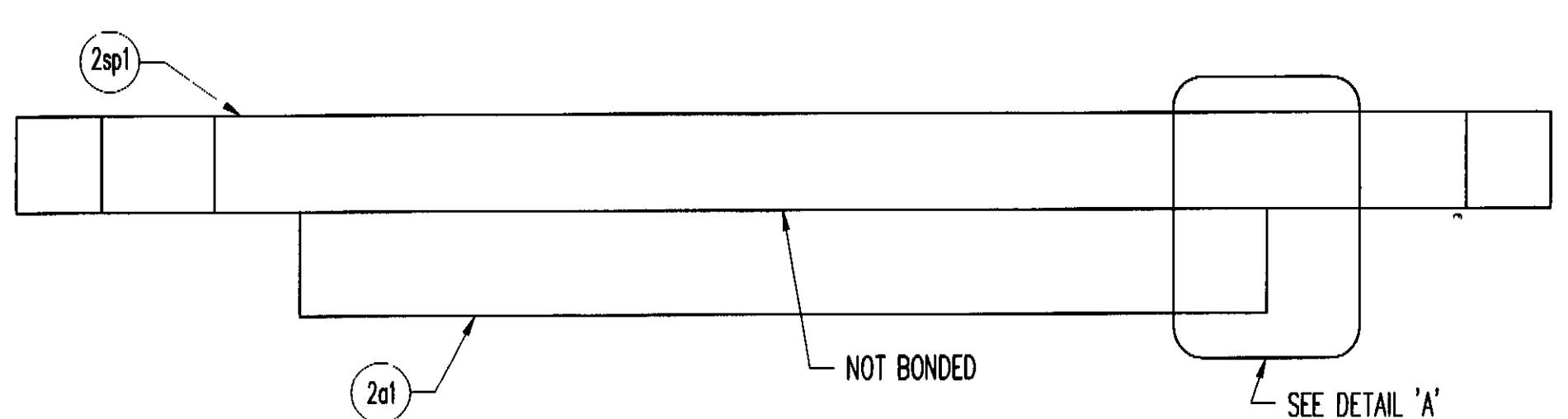
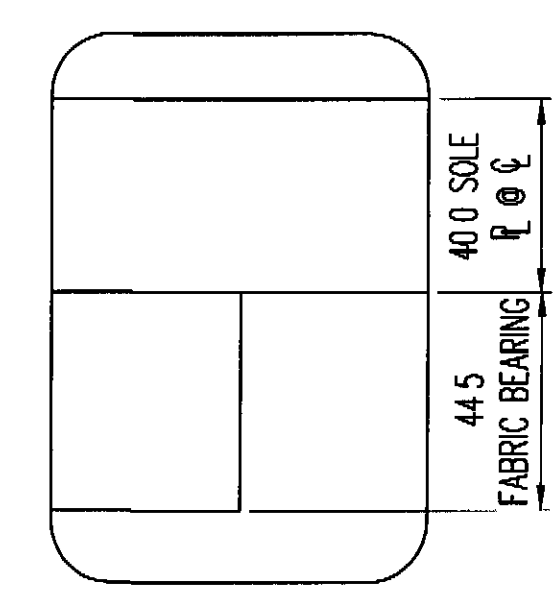


PLAN VIEW
FIXED FABRIC BEARING
(4) REQ'D @ ABUTMENT 2

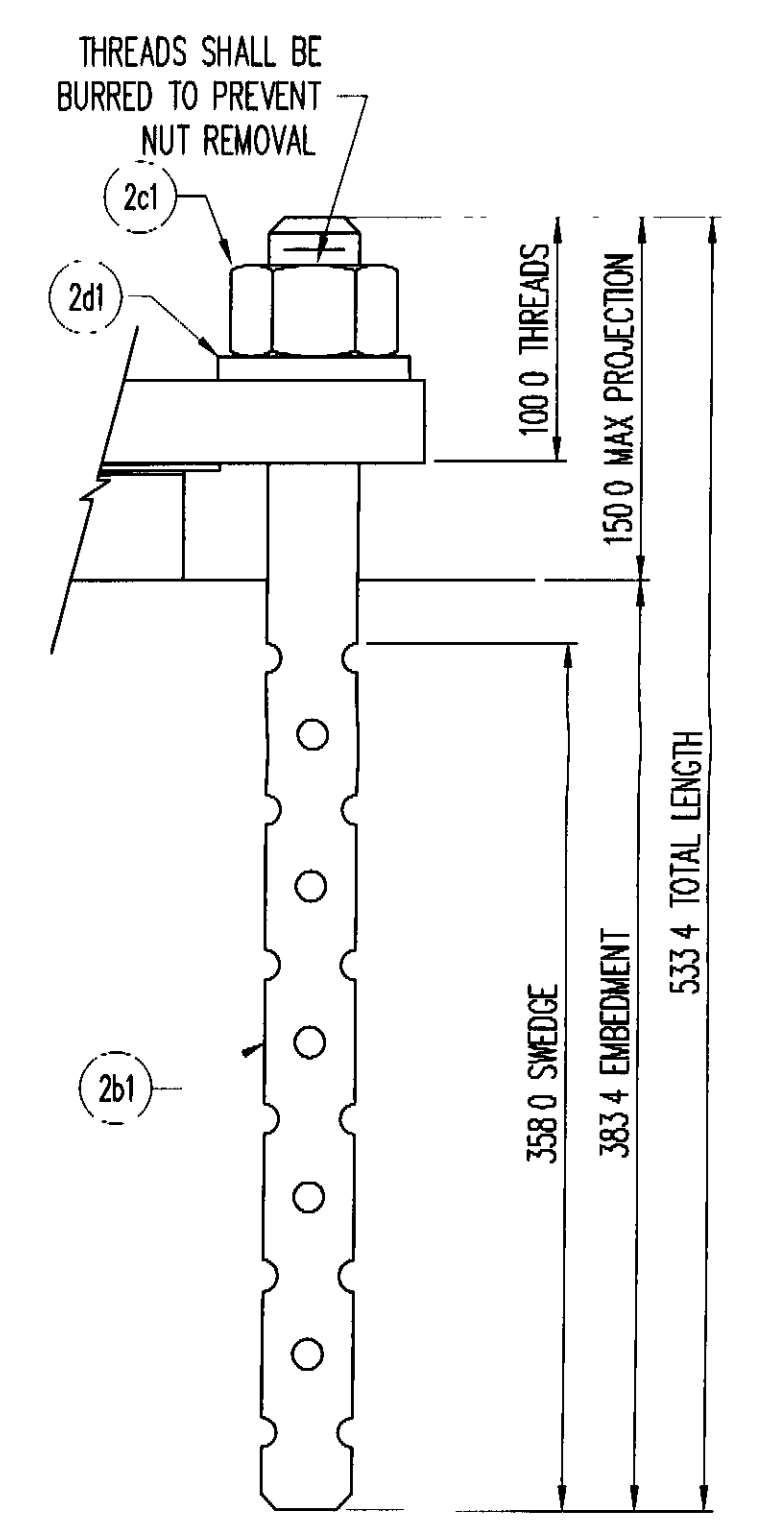


SECTION 'A-A'

LOAD DATA	26169-1106-2
VERTICAL DESIGN LOAD	672.0 kN



DETAIL 'A'



ANCHOR ROD DETAIL

MK	QTY	DESCRIPTION	MATERIAL	LENGTH	REMARKS	REV
2A	4	FIXED FABRIC BEARING				-
2ol	4	44.5 X 410.0	VT 731.01	240.0		-
2sp1	4	50.0 X 650.0	A709 GR 345W	350.0	A123-HDG	-
2B	8	SWEDGED ROD				-
2b1	8	Ø38.1 X 533.4 SWEDGED ROD	F1554 GR 250		100.0 THREADS, 358.0 SWEDGE, A153-HDG	-
2C	8	HEAVY HEX NUT				-
2c1	8	Ø38.1 HEX NUT	A563-DH OR A194-2H		A153-HDG	-
2D	8	WASHER PLATE				-
2d1	8	9.5 X 80.0	A36	80.0	42.9 DIA HOLE CENTERED, A123-HDG	-
					4/27/2009 9:03:21 AM	

RECEIVED
OK'D BY: *WEL* OK'D BY: _____
MAY 04 2009
APPROVED: _____
BY: *plw* DATE: 5/19/09

SEE SHEET G01 FOR GENERAL NOTES

REV	DESCRIPTION	DATE	DET	CPD

D.S. BROWN
THE D.S. BROWN COMPANY
300 E. CHERRY STREET
NORTH BALTIMORE, OHIO 45872
419.257.1561
FAX 419.257.0332
WWW.DSBROWN.COM

DESCRIPTION	SCALE	DRAWN BY	CHECKED BY	DATE	QUANTITY
FIXED FABRIC BEARING ADDISON CO., VT	N T S	NRA	DAE	4/24/09	4 OF 4
PROJECT NUMBER	26169	PRODUCT CODE	1106	RELEASE	1
					02