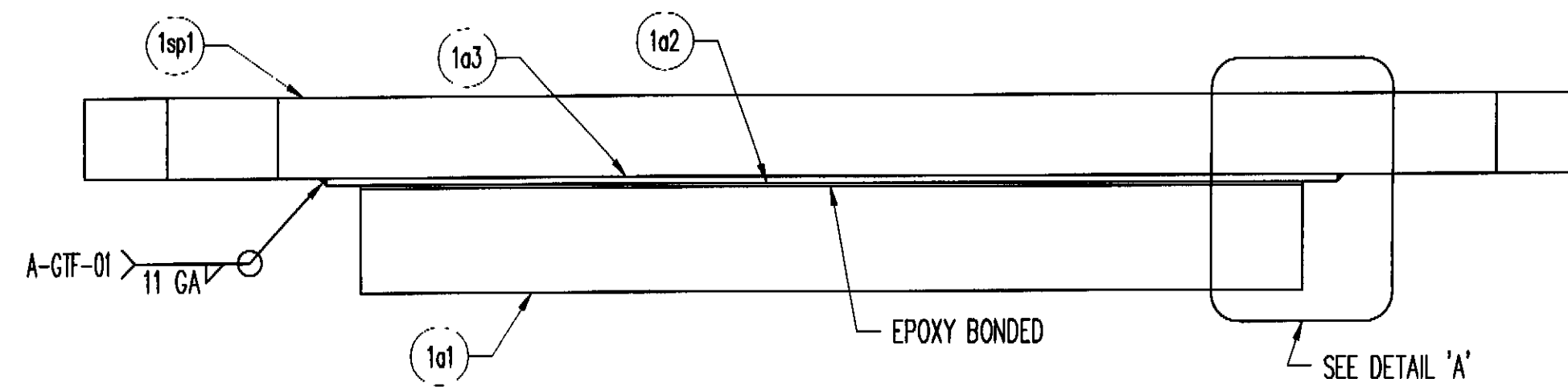
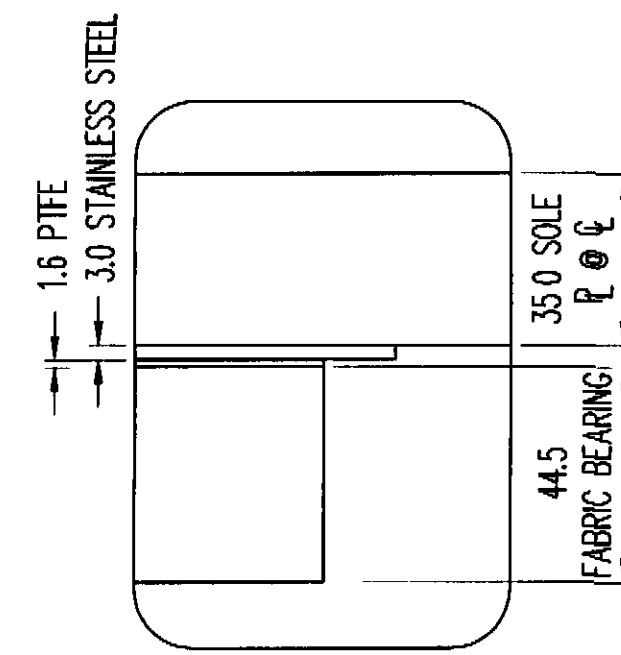


PLAN VIEW
EXPANSION FABRIC BEARING
(4) REQ'D @ ABUTMENT 1

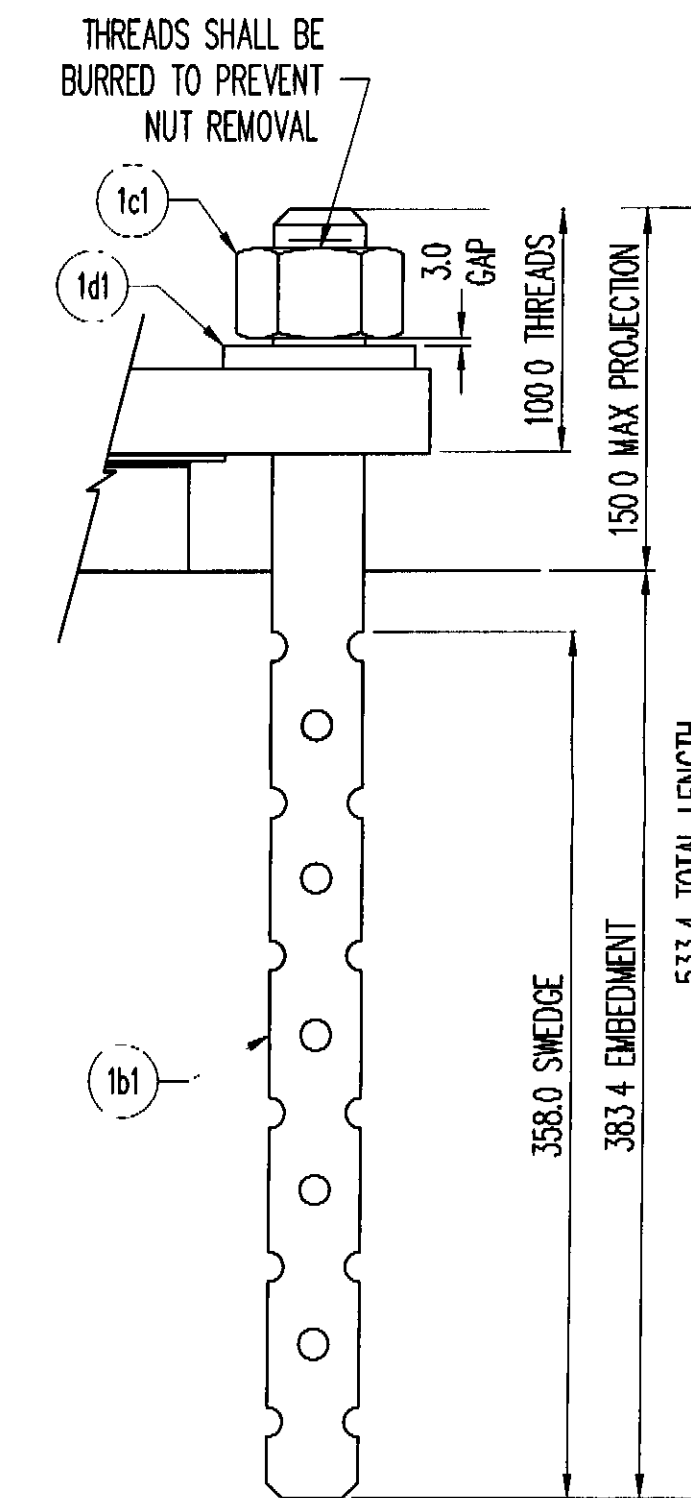


SECTION 'A-A'

LOAD DATA	26169-1106-1
VERTICAL DESIGN LOAD	672.0 kN



DETAIL 'A'



ANCHOR ROD DETAIL

MK	QTY	DESCRIPTION	MATERIAL	LENGTH	REMARKS	REV
1A	4	EXPANSION FABRIC BEARING				-
1a1	4	44.5 X 410.0	VT 731.01	240.0		-
1a2	4	1.6 X 410.0	PTFE	240.0	PURE VIRGIN UNFILLED	-
1a3	4	11 GA. X 440.0	A240 T304, #8 & 2B	340.0	PLAIN	-
1sp1	4	40.0 X 650.0	A709 GR 345W	350.0	A123-HDC	-
1B	8	SWEDGED ROD				-
1b1	8	Ø38.1 X 533.4 SWEDGED ROD	F1554 GR 250		100.0 THREADS, 358.0 SWEDGE, A153-HDC	-
1C	8	HEAVY HEX NUT				-
1c1	8	Ø38.1 HEX NUT	A563-DH OR A194-2H		A153-HDC	-
1D	8	WASHER PLATE				-
1d1	8	9.5 X 170.0	A36	80.0	42.9 DIA HOLE CENTERED, A123-HDC	-
					4/27/2009 9 03 21 AM	

RECEIVED
OK'D BY: *U/L* OK'D BY: _____
MAY 04 2009
APPROVED: *[Signature]*
BY: *RRW* DATE: 5/19/09

SEE SHEET G01 FOR GENERAL NOTES

REV	DESCRIPTION	DATE	DFT	CPD
	LOCATION — T.H. 9 CL 3 (LOCAL ROAD)			
	BRIDGE — 48			
	PROJECT — BRO 1445 (25)			
	DESIGNER — VTDOT			
	CUSTOMER — PARENT CONSTRUCTION INC			

D.S. BROWN
THE D.S. BROWN COMPANY
300 F CHERRY STREET
NORTH BALTIMORE, OHIO 45872
419 257 3561
FAX 419 257 0332
WWW.DSBROWN.COM



DESCRIPTION	SCALE	DRAWN BY	CHECKED BY	DATE
EXPANSION FABRIC BEARING	N.T.S.	NRA	DAE	4/24/09
ADDISON CO., VT	PROJECT NUMBER	PRODUCT CODE	RELEASE	1891
	26169	1106	1	01