

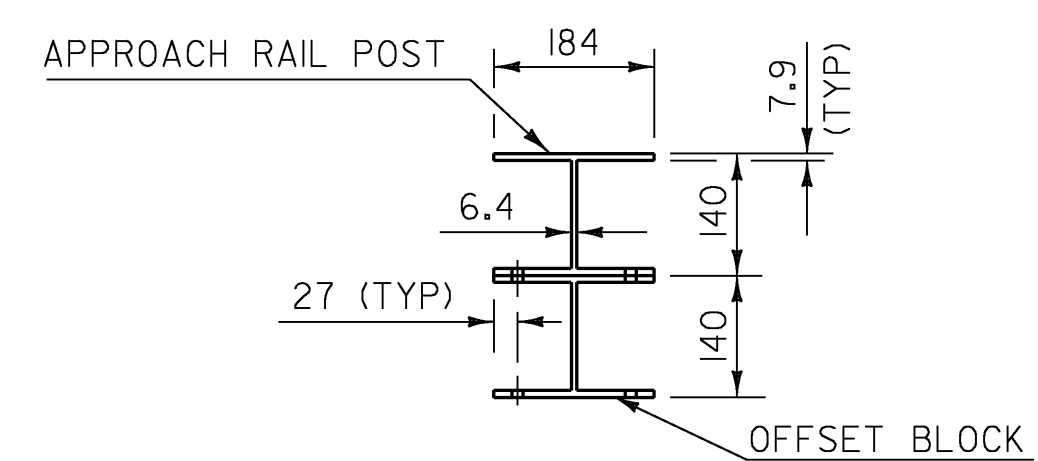
PLAN

ALUMINUM APPROACH RAIL  
RAIL DIMENSIONS FOR A CURB CONDITION

POST NO.	RAIL HEIGHT DIMENSIONS			OFFSET BLOCK DIMENSIONS			
	A	B	C	D	E	F	G
1	1241	959	516	293	444	851	-
2	1158	920	494	249	426	789	-
3	1075	881	473	205	408	728	-
4	992	842	451	162	391	667	-
5	-	790	423	-	367	-	493
6	-	737	394	-	344	-	470
7	-	685	365	-	320	-	446

ALUMINUM APPROACH RAIL  
RAIL DIMENSIONS FOR A SIDEWALK CONDITION

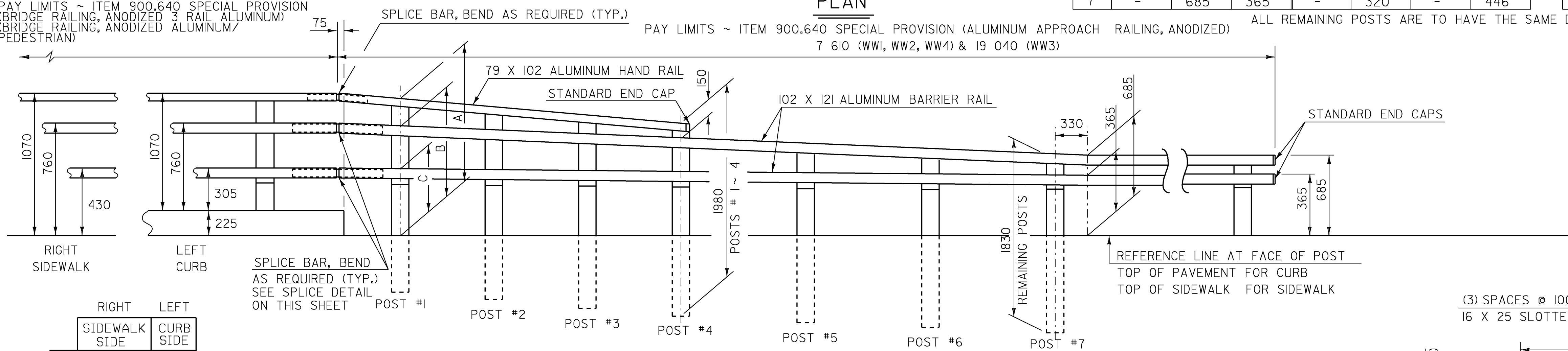
POST NO.	RAIL HEIGHT DIMENSIONS			OFFSET BLOCK DIMENSIONS			
	A	B	C	D	E	F	G
1	1035	754	424	293	329	737	-
2	981	744	416	249	328	691	-
3	928	734	408	205	327	646	-
4	874	724	399	162	325	601	-
5	-	711	388	-	323	-	449
6	-	698	376	-	322	-	448
7	-	685	365	-	320	-	446



PLAN

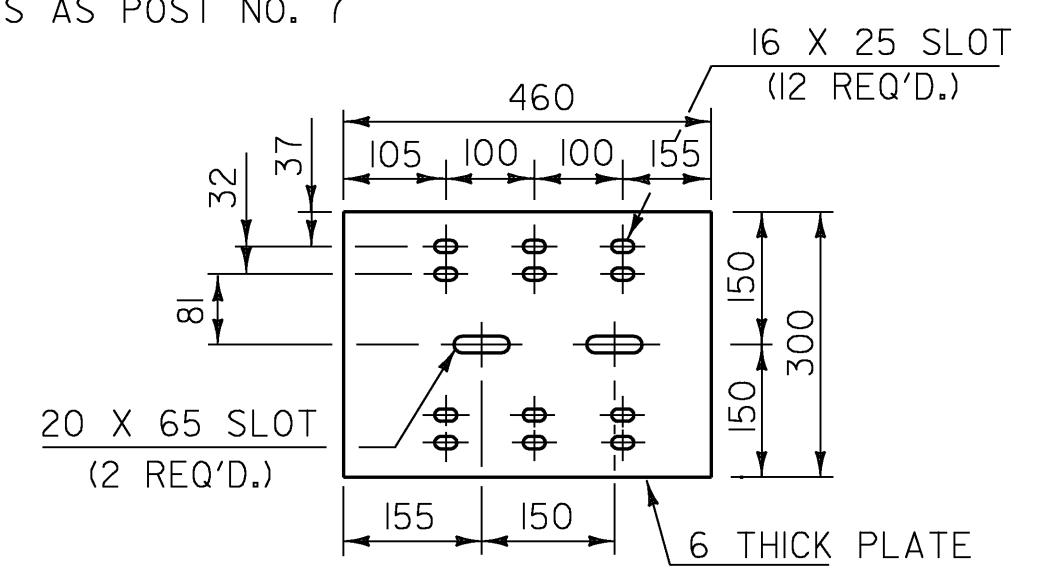
ALL REMAINING POSTS ARE TO HAVE THE SAME DIMENSIONS AS POST NO. 7

PAY LIMITS ~ ITEM 900.640 SPECIAL PROVISION  
(BRIDGE RAILING, ANODIZED 3 RAIL ALUMINUM)  
(BRIDGE RAILING, ANODIZED ALUMINUM/  
PEDESTRIAN)

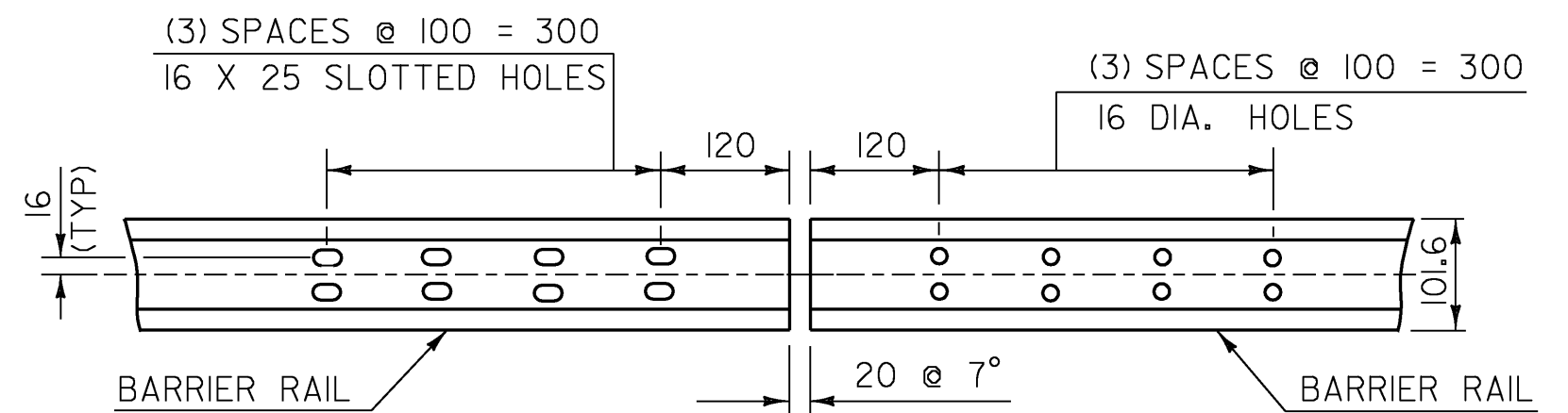


ELEVATION

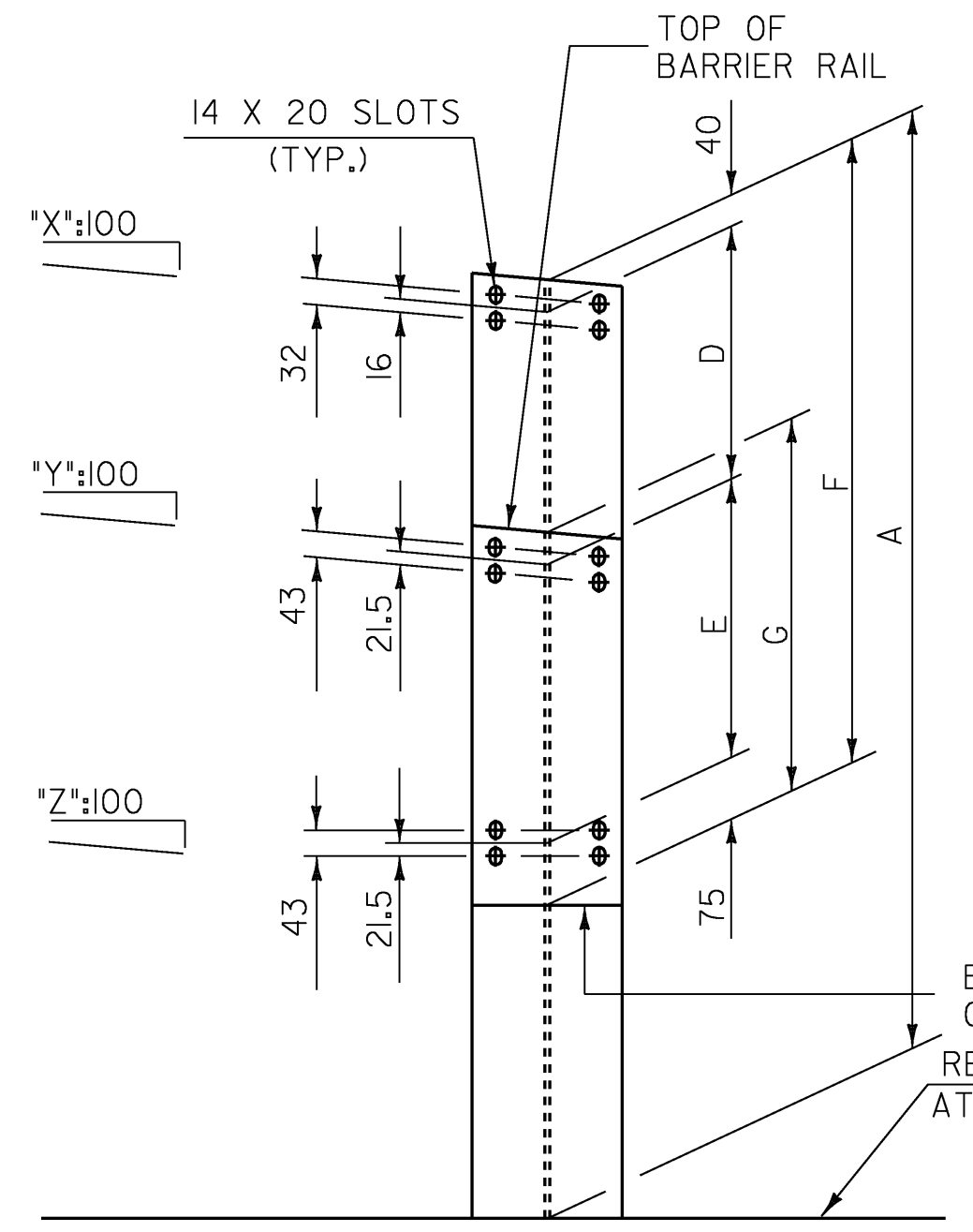
	RIGHT SIDEWALK	LEFT CURB SIDE
*X*	-6	-9
*Y*	-1	-4
*Z*	-1	-2



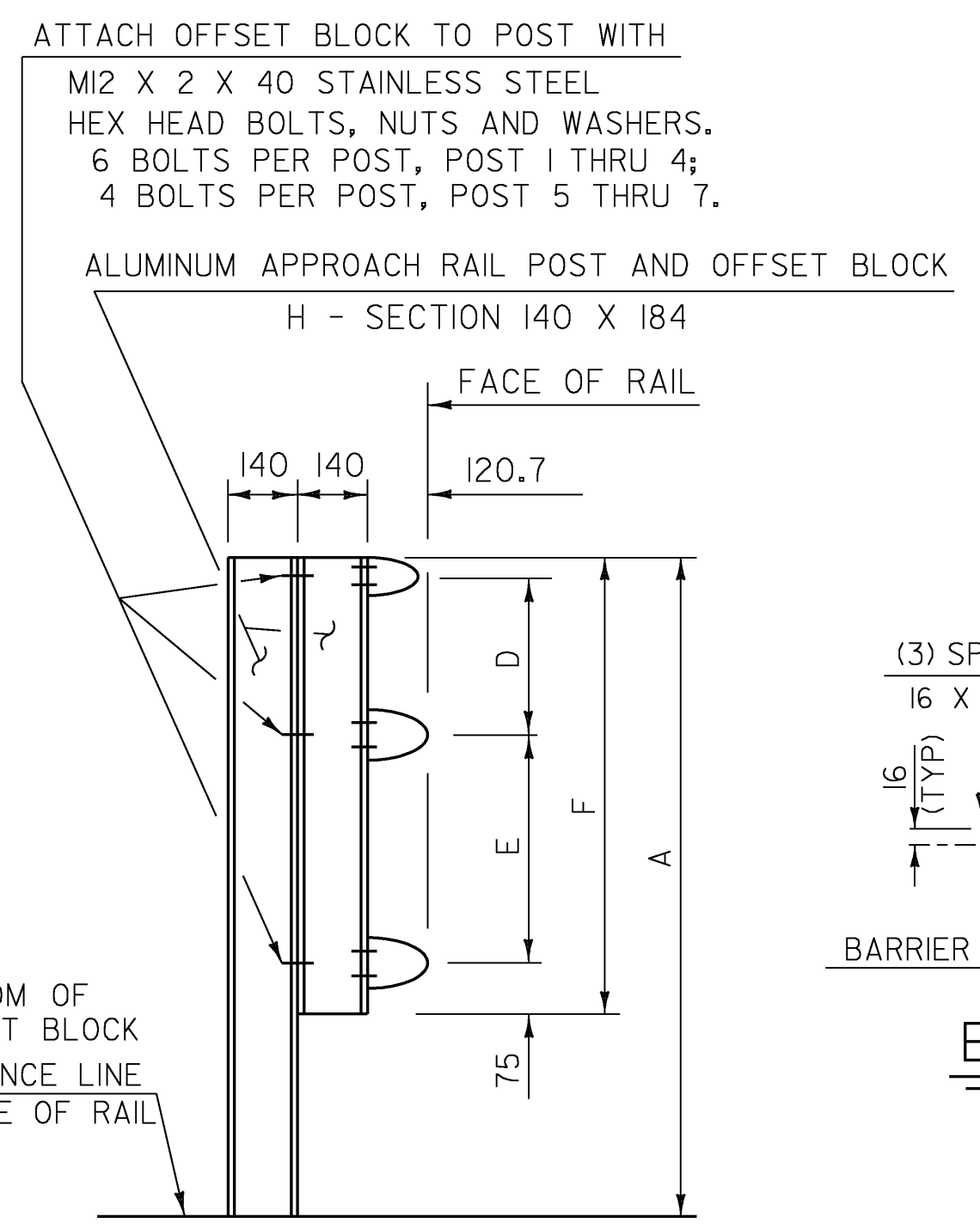
BACK-UP PLATE DETAILS



ELEVATION OF BARRIER RAIL (FROM BACK)  
AT ALL INTERMEDIATE RAIL SPLICES

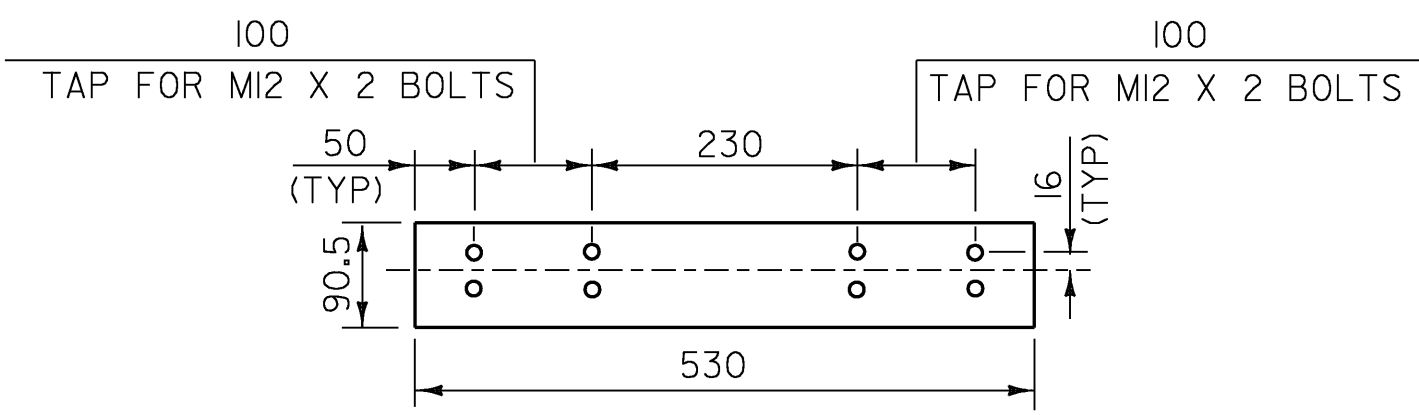


FRONT ELEVATION

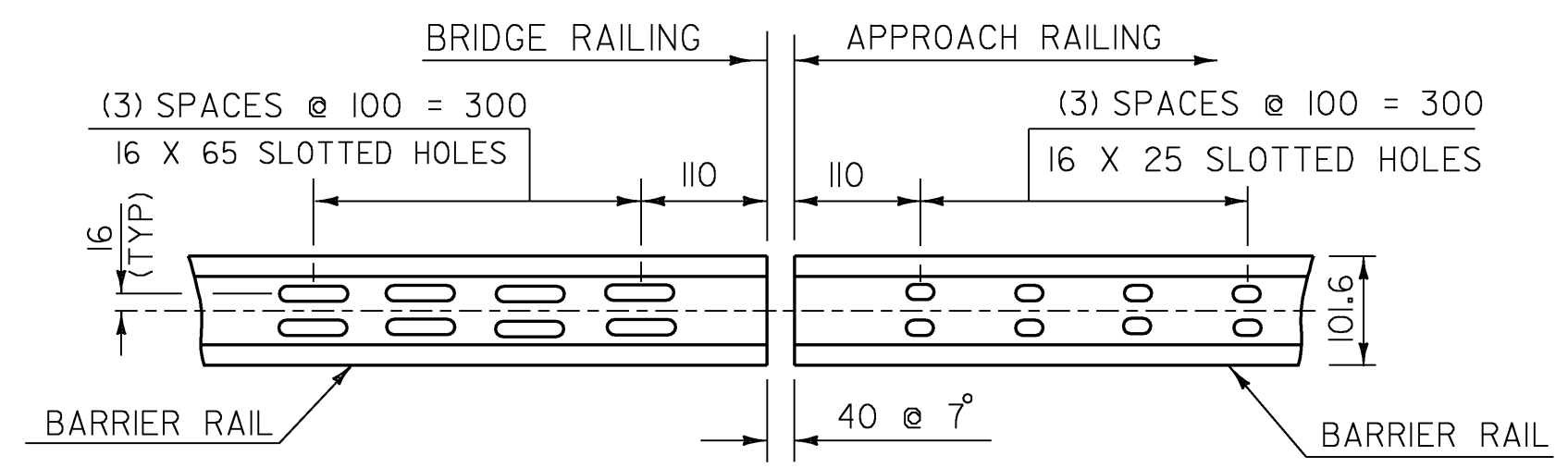


SIDE ELEVATION

APPROACH RAIL DETAILS



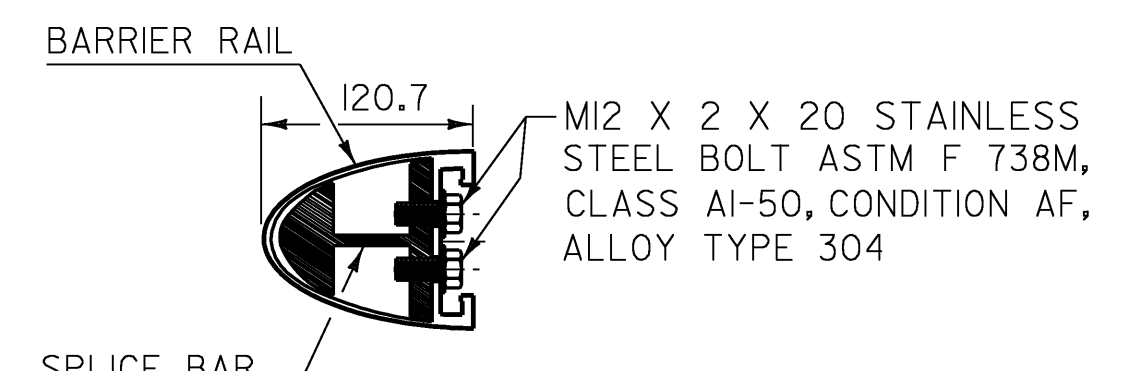
ELEVATION OF BARRIER RAIL SPLICE BAR  
TO BE USED AT TRANSITION BETWEEN  
APPROACH RAIL & GUARD RAIL (FROM BACK)



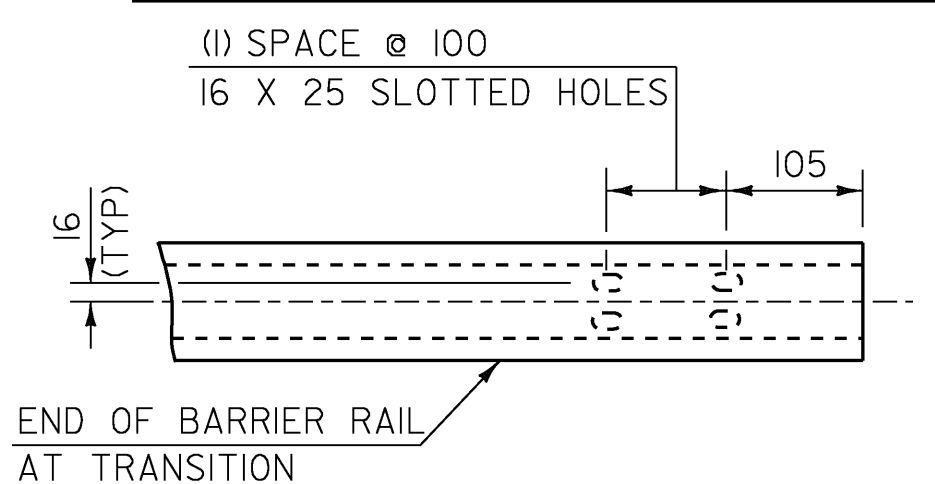
ELEVATION OF BARRIER RAIL (FROM BACK)

NOTES

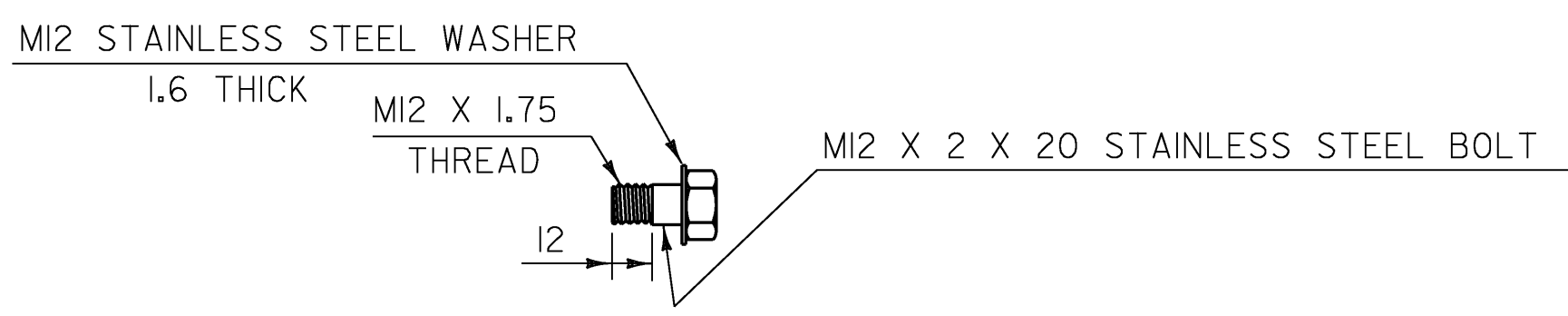
- POST 1 THROUGH 7 SHALL BE EXTRUDED ALUMINUM.
- DETAILS ARE SHOWN FOR TRANSITION TO A 3 RAIL ALUMINUM BRIDGE RAILING.
- DIMENSIONS SHOWN ARE FROM A REFERENCE LINE AT THE FACE OF POST FOR A NORMAL CROWNED SECTION. APPROPRIATE CORRECTIONS SHALL BE MADE FOR CROSS SLOPES OTHER THAN A NORMAL SECTION.



TYPICAL SECTION THROUGH  
BARRIER RAIL SPLICE



ELEVATION OF BARRIER RAIL  
(FROM FRONT) AT TRANSITION



STAINLESS STEEL BOLT DETAILS  
(FOR SPLICE BARS)

ALUMINUM BRIDGE RAILING  
DETAILS 3

PROJECT NAME:	LINCOLN	PLOT DATE:	29-JAN-2009
PROJECT NUMBER:	BRO 1445 (25)	DRAWN BY:	C. MOONEY
FILE NAME:	s96J266r-all.dgn	CHECKED BY:	T. LACKY
PROJECT LEADER:	R. WHITCOMB	ALUMINUM BRIDGE RAILING DETAILS 3	SHEET 46 OF 58
DESIGNED BY:	T. LACKY		