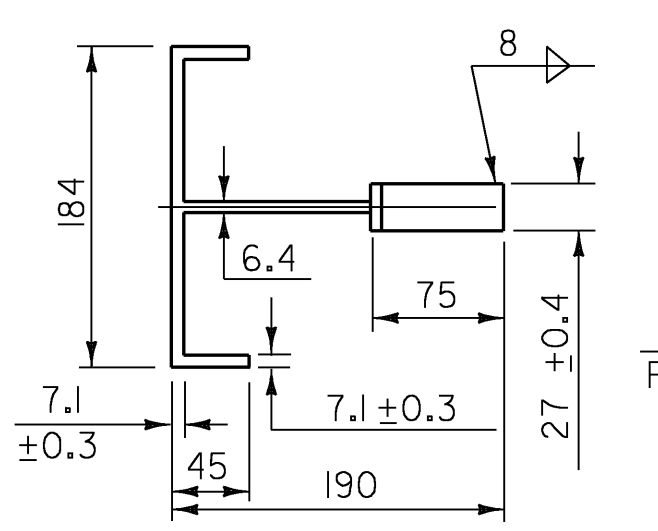
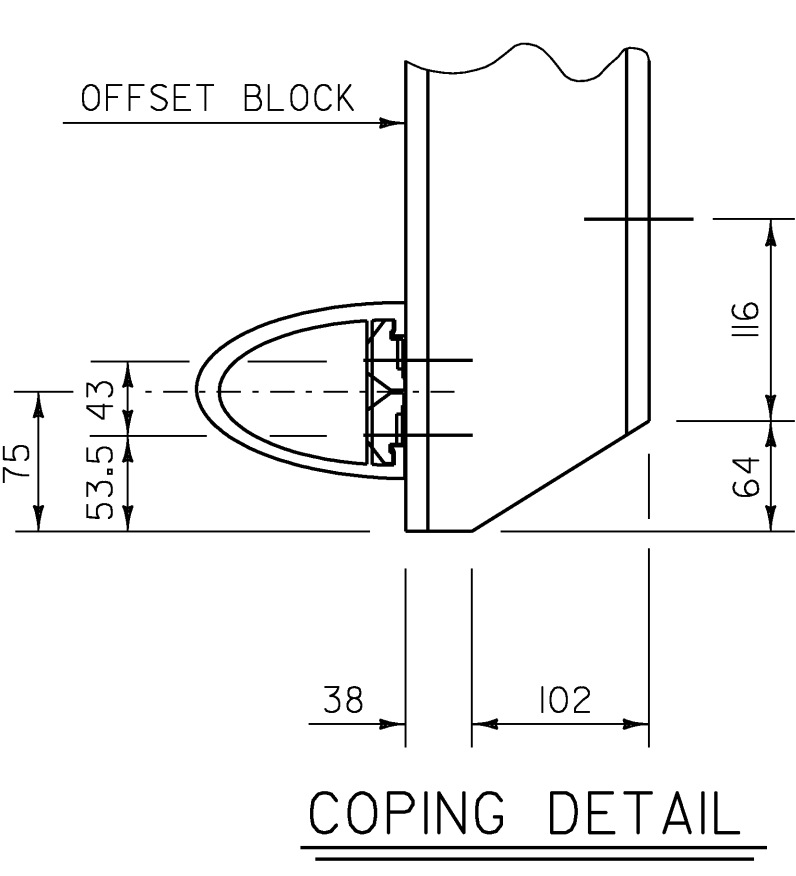


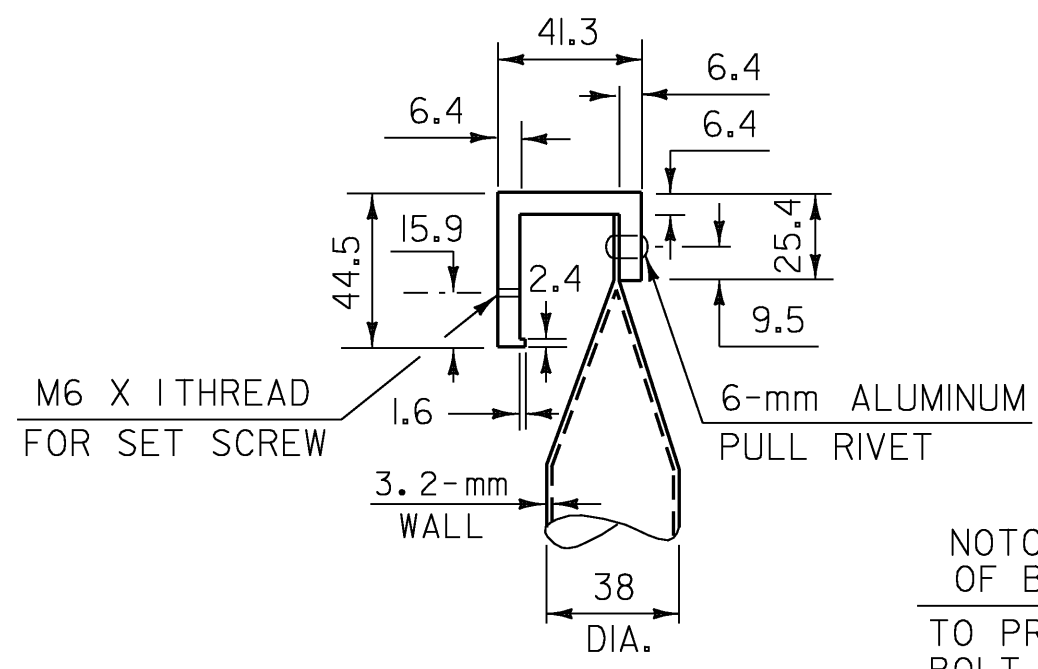
POST SIDE VIEW



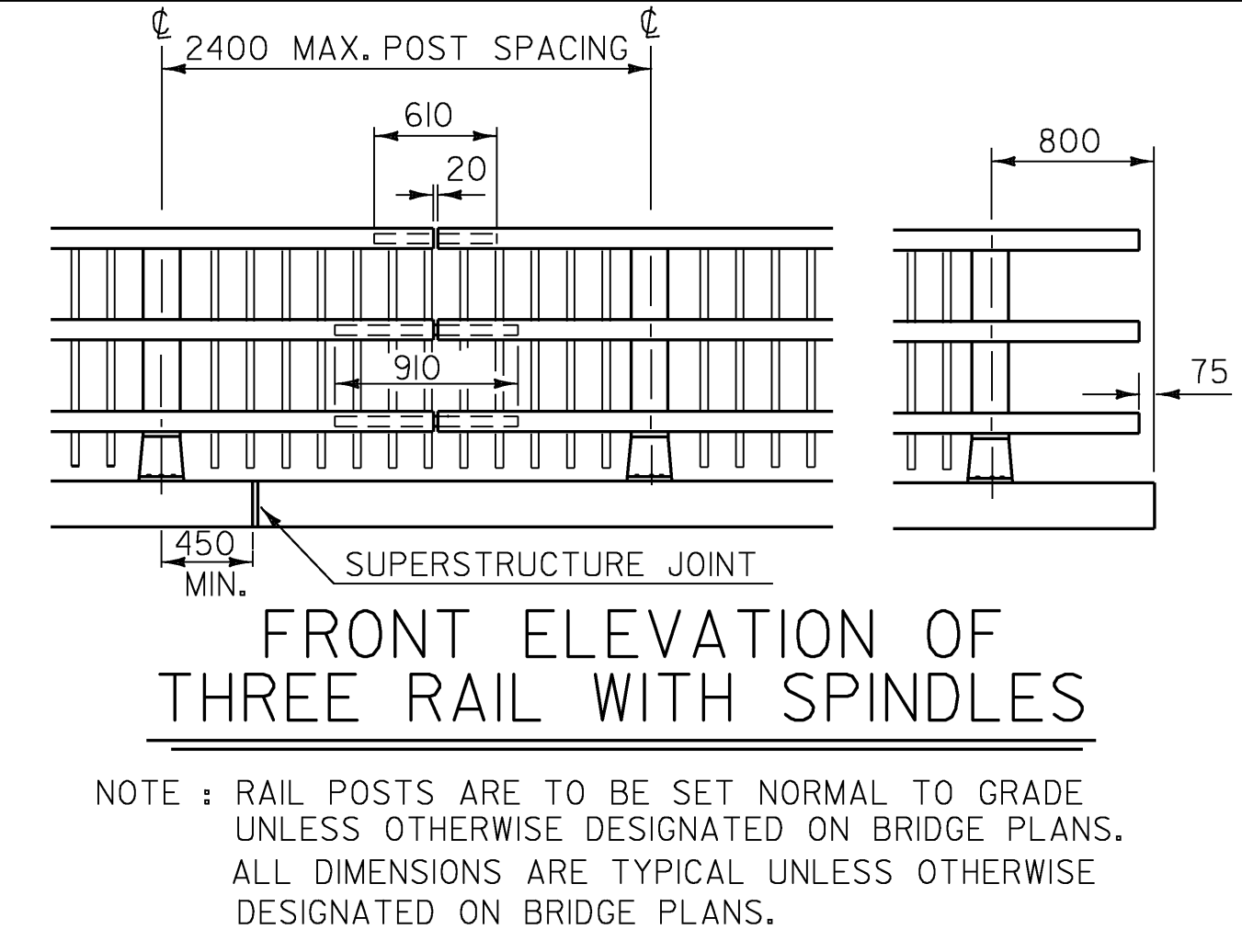
POST PLAN VIEW



COPING DETAIL

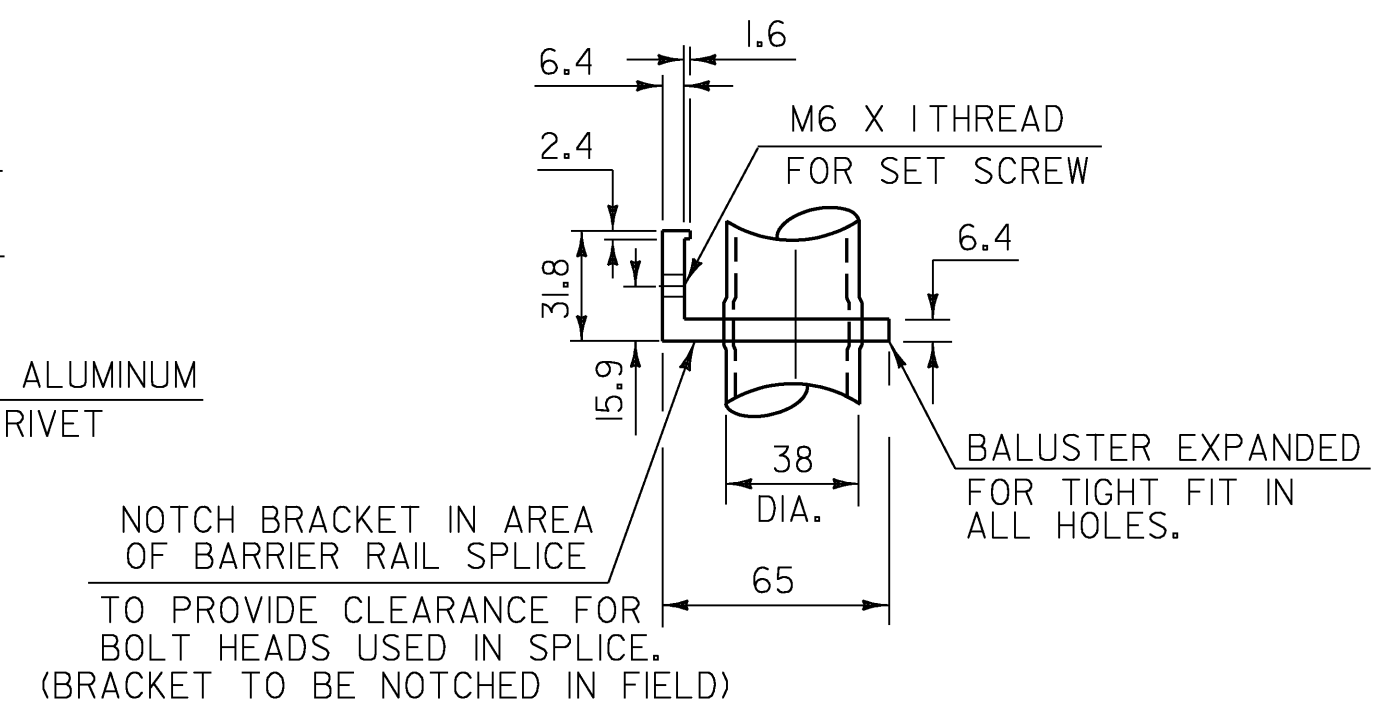


DETAIL A

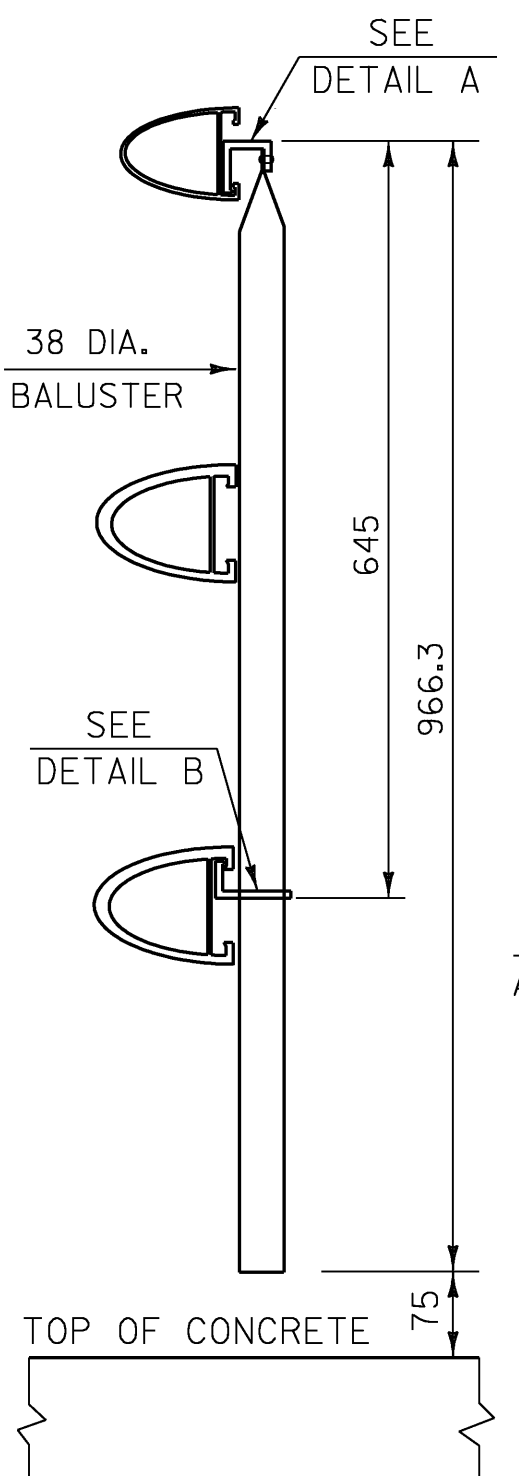


FRONT ELEVATION OF THREE RAIL WITH SPINDLES

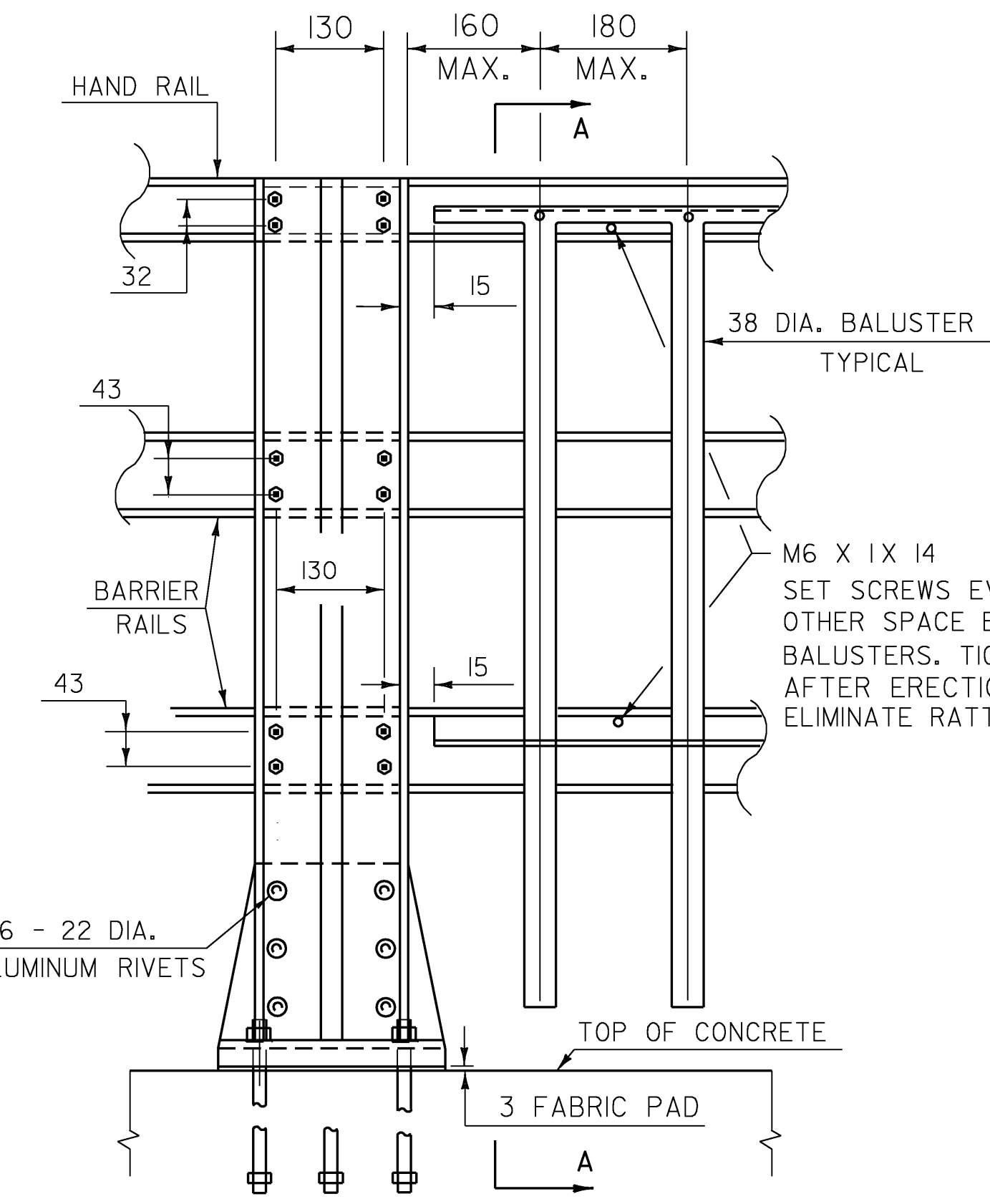
NOTE: RAIL POSTS ARE TO BE SET NORMAL TO GRADE UNLESS OTHERWISE DESIGNATED ON BRIDGE PLANS. ALL DIMENSIONS ARE TYPICAL UNLESS OTHERWISE DESIGNATED ON BRIDGE PLANS.



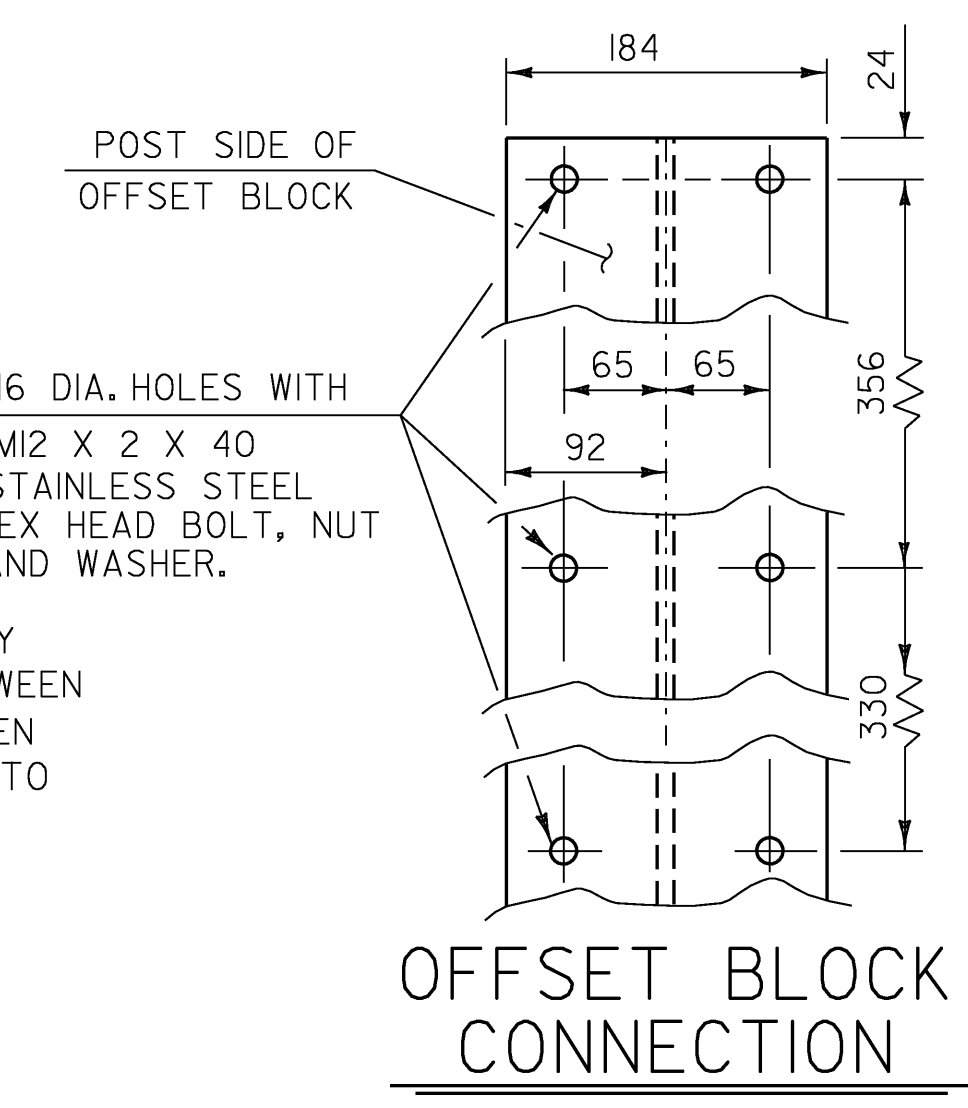
DETAIL B



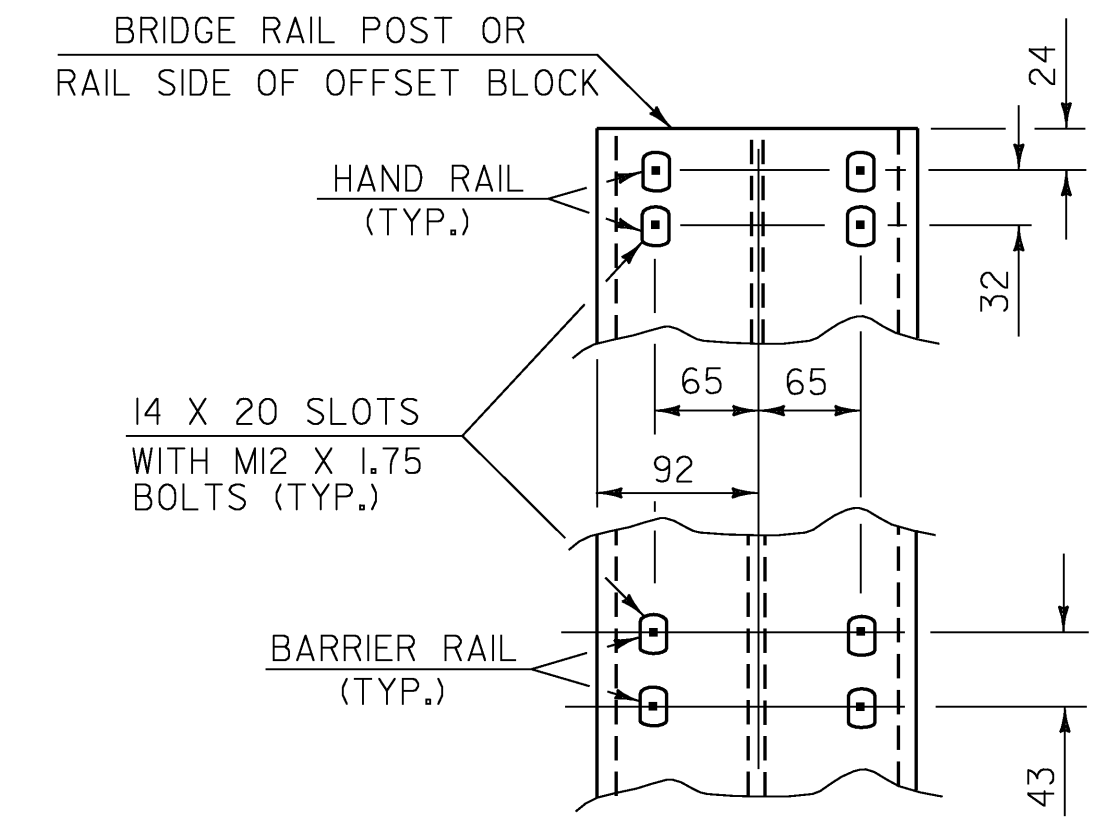
SECTION AA



OUTSIDE ELEVATION OF THREE RAIL POST & SPINDLES

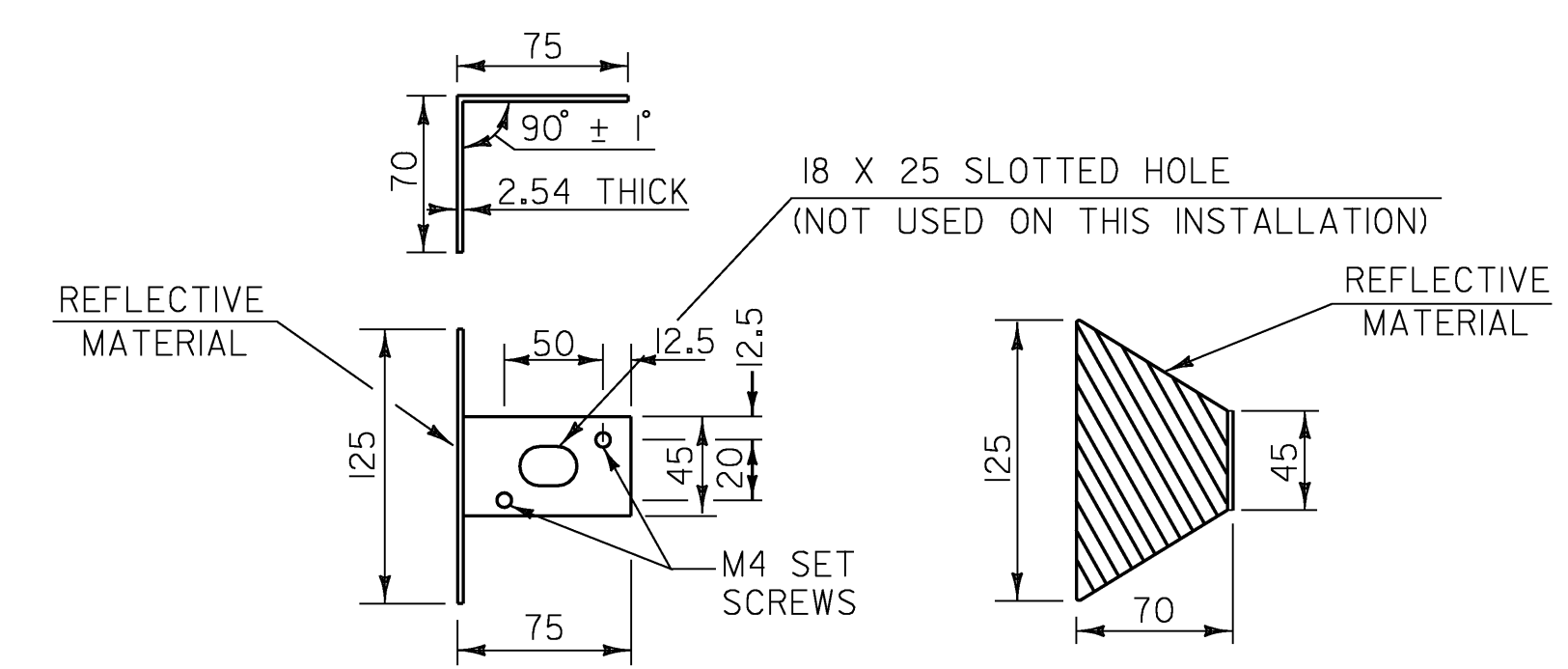


OFFSET BLOCK CONNECTION

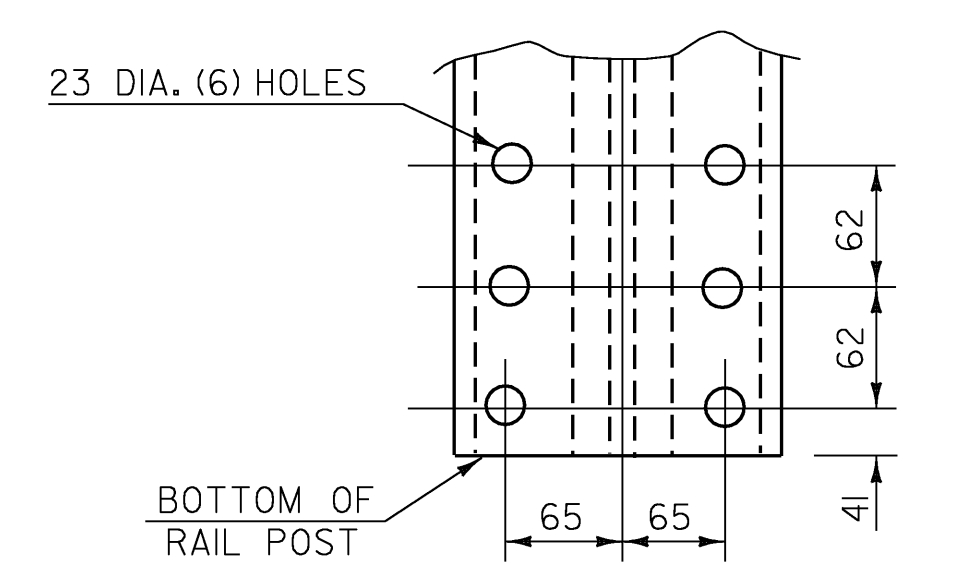


RAIL CONNECTION

DETAILS OF SPINDLES FOR ALUMINUM RAILING



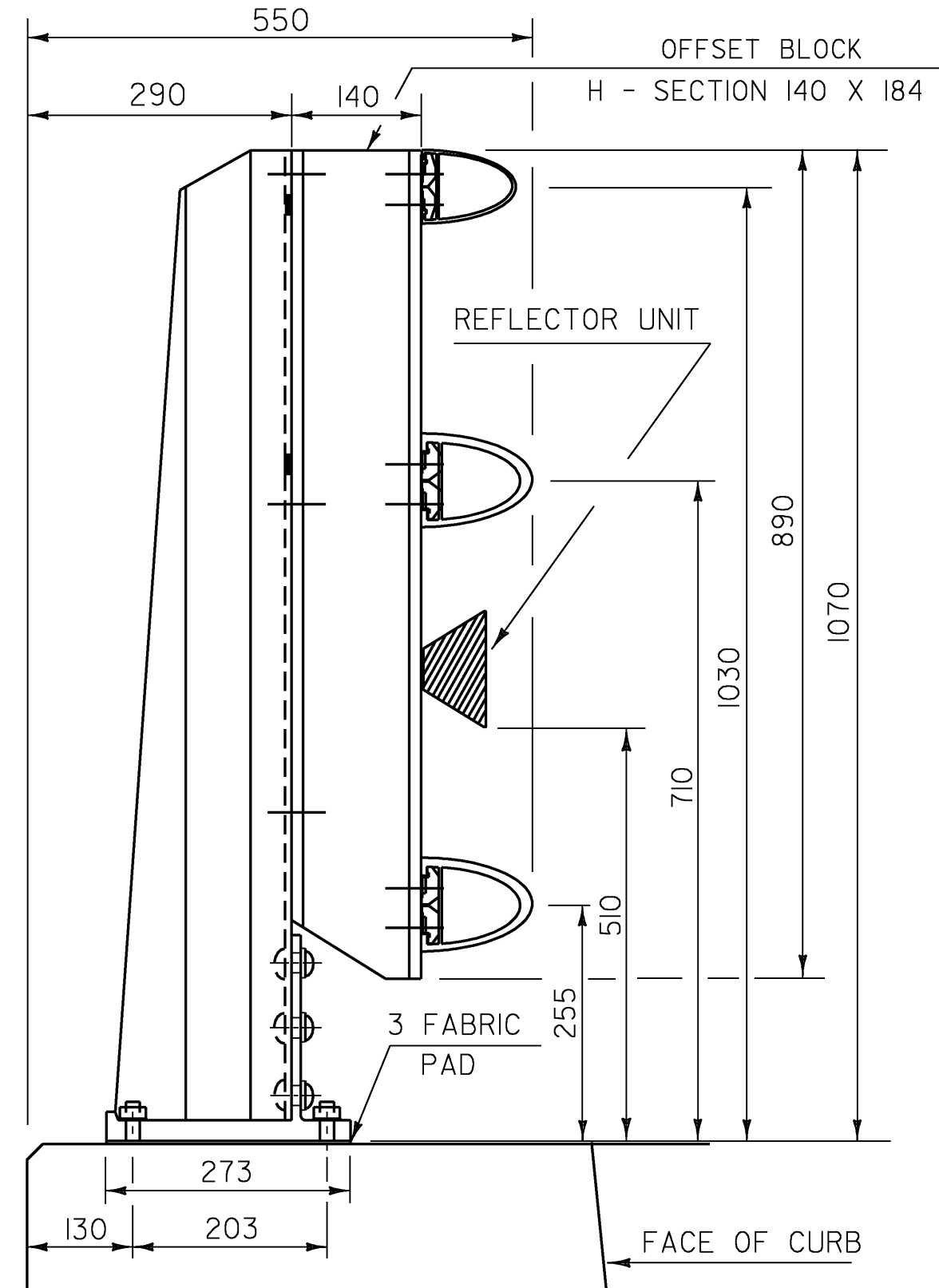
REFLECTOR DETAILS



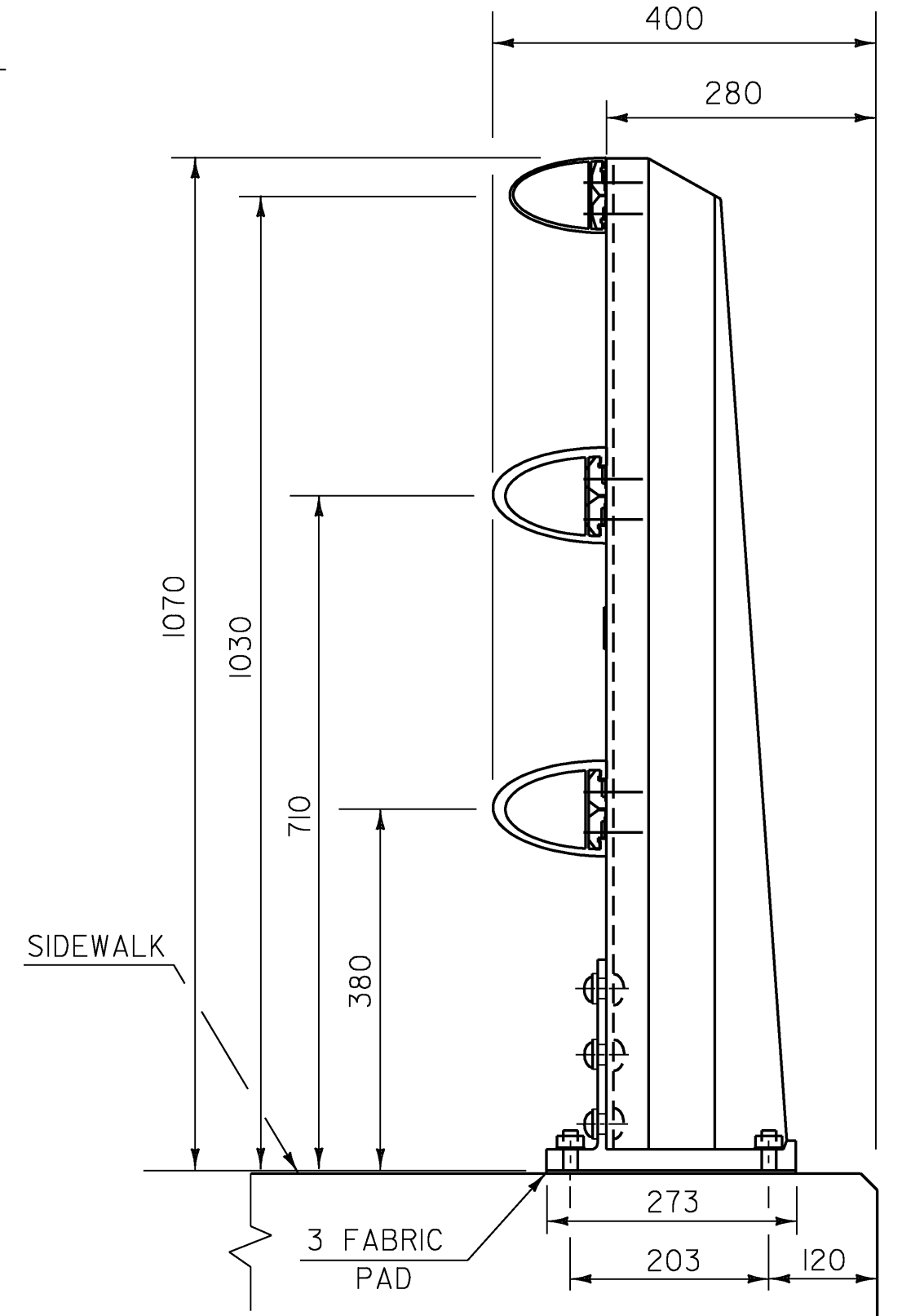
POST BASE BOLT HOLE DETAILS

NOTES

1. THIS REFLECTORIZED ALUMINUM DELINEATOR IS TO BE ERECTED EVERY 9 m (OR CLOSEST POST) WITH 2-M4 X 0.7 X 20 SET SCREWS.
2. DELINEATORS SHALL MEET SPECIFICATION REQUIREMENTS FOR ASTM B 209M ALLOY 5052-H32.
3. RETROREFLECTIVE MATERIAL SHALL MEET THE REQUIREMENTS OF SUBSECTION 750.08 AND SHALL BE OF ENCAPSULATED LENS SILVER.
4. ON BRIDGES WITH A SIDEWALK, DELINEATORS ARE NOT TO BE INSTALLED ON THE SIDEWALK SIDE OF THE BRIDGE (I.E. DELINEATORS INSTALLED ONLY ON THE CURB SIDE AND ON THE APPROACH RAIL ON THE CURB SIDE).
5. PAYMENT SHALL BE INCIDENTAL TO APPLICABLE 900.640 SPECIAL PROVISION ITEMS.



SIDE ELEVATION OF THREE RAIL TO BE USED ON CURB SIDE



SIDE ELEVATION OF THREE RAIL TO BE USED ON SIDEWALK SIDE

RAIL POST DETAILS ON SUPERSTRUCTURE

ALUMINUM BRIDGE RAILING DETAILS I

PROJECT NAME:	LINCOLN	PLOT DATE:	29-JAN-2009
PROJECT NUMBER:	BRO 1445 (25)	DRAWN BY:	C. MOONEY
FILE NAME:	s96j266r-all.dgn	CHECKED BY:	T. LACKEY
PROJECT LEADER:	R. WHITCOMB	SHEET	44 OF 58
DESIGNED BY:	T. LACKEY		
ALUMINUM BRIDGE RAILING DETAILS I			