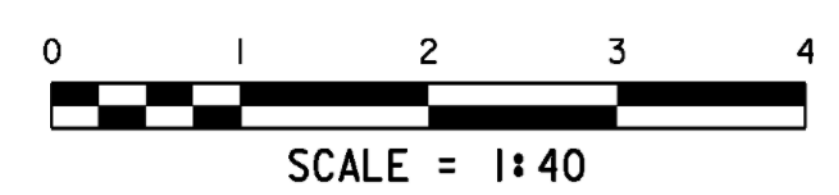
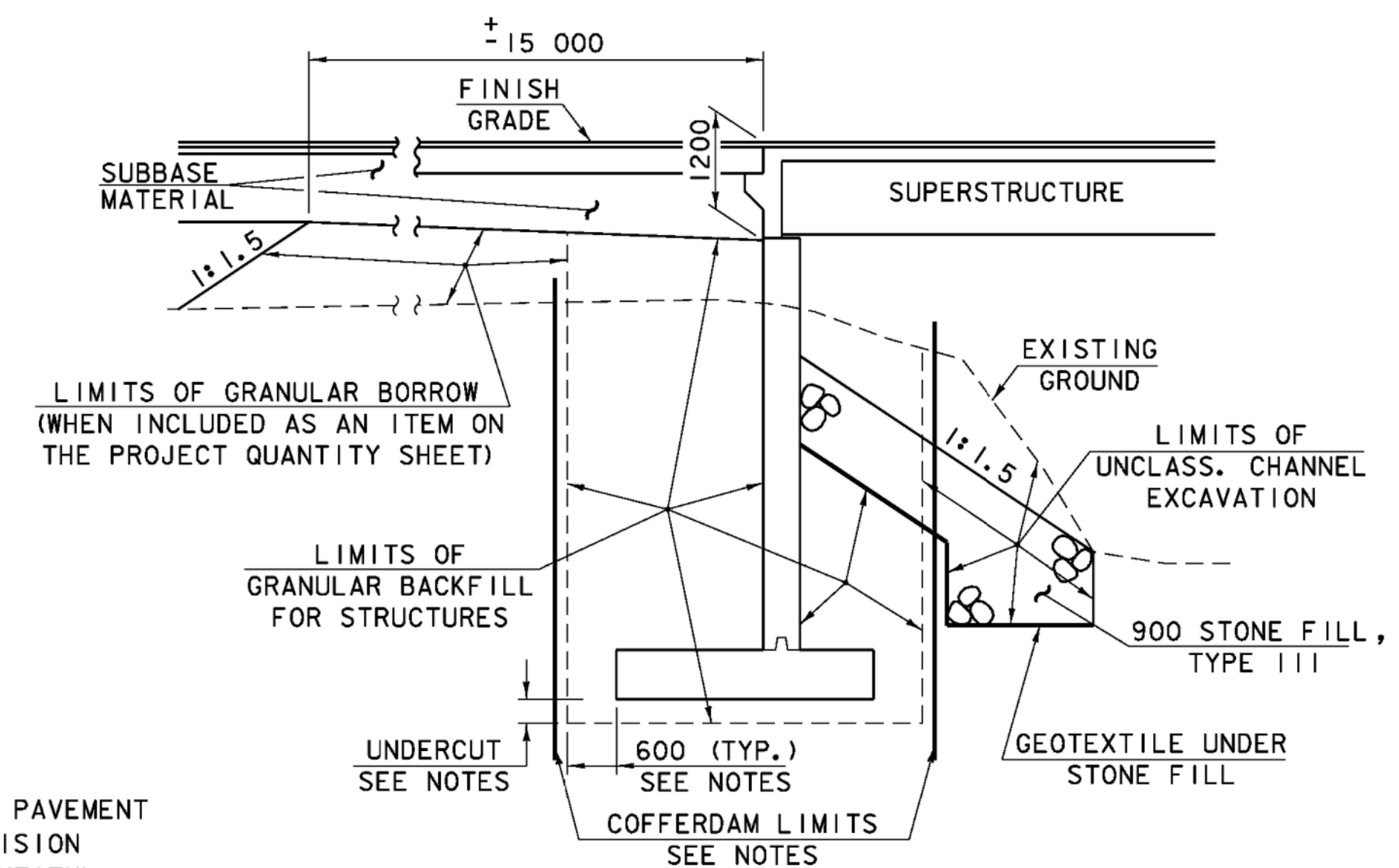


**BRIDGE TYPICAL SECTION**



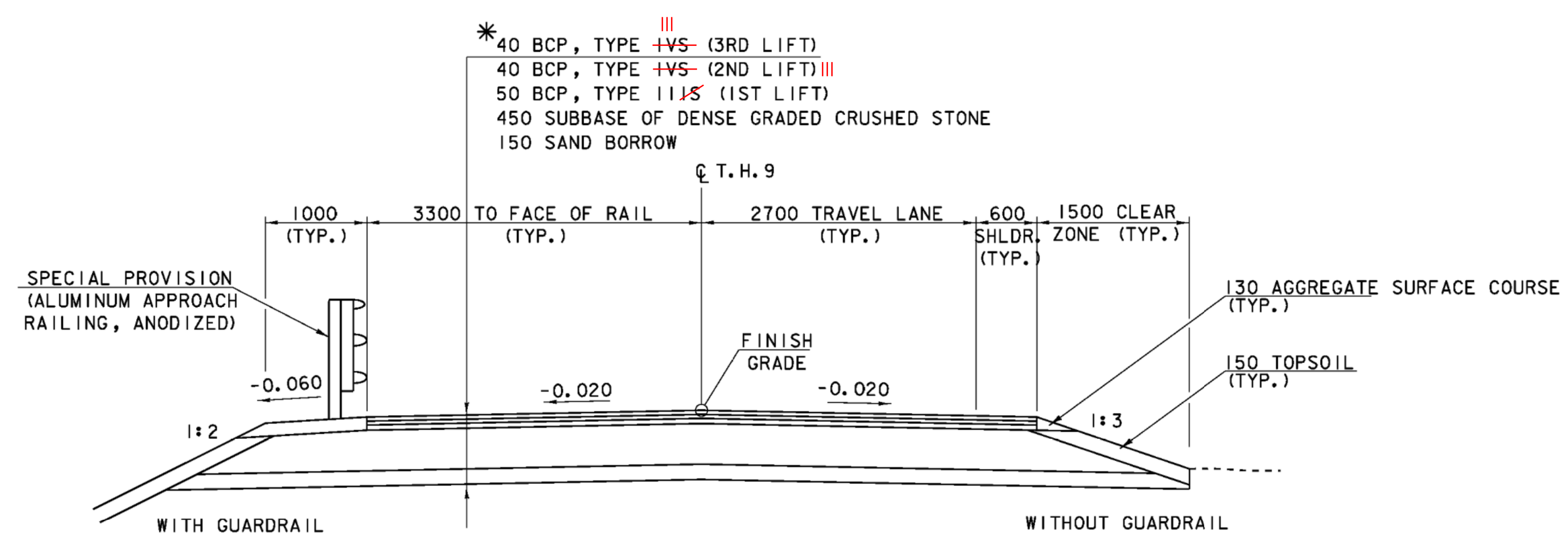
\* BCP SHALL BE READ AS BITUMINOUS CONCRETE PAVEMENT AND SHALL BE PAID FOR UNDER SPECIAL PROVISION (BITUMINOUS CONCRETE PAVEMENT, SMALL QUANTITY)



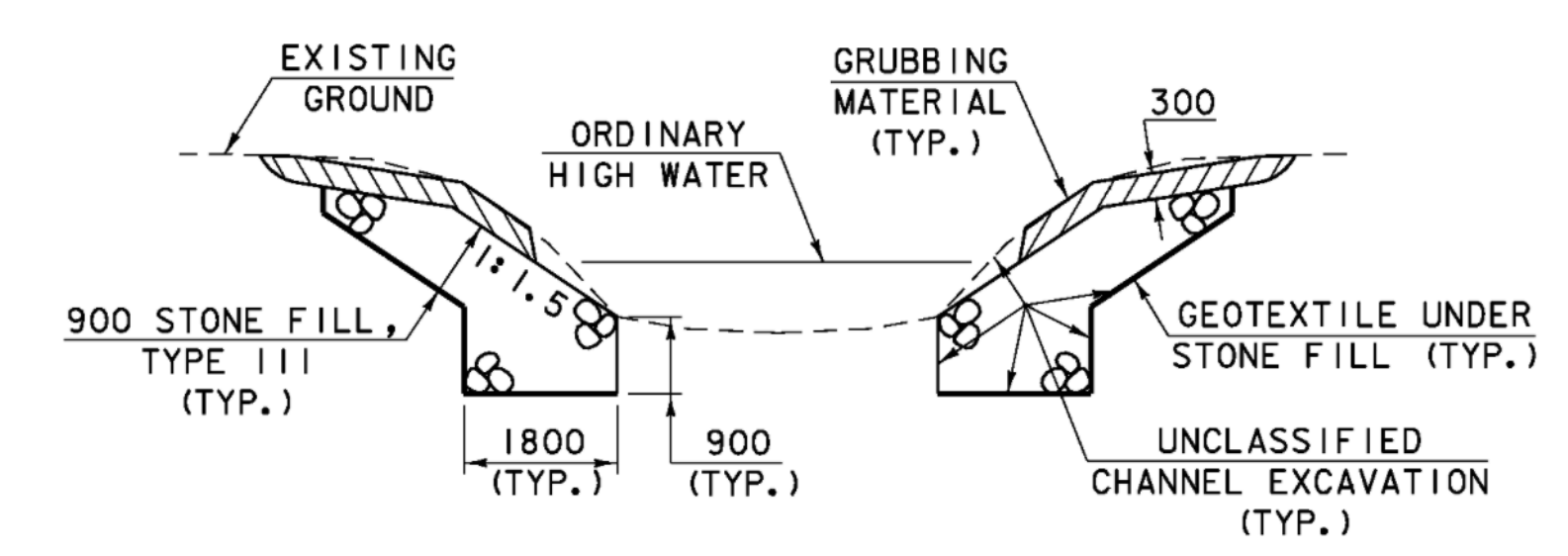
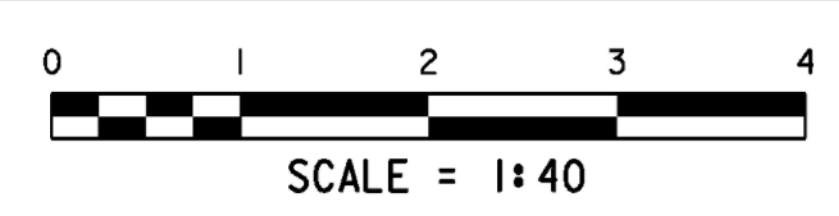
**TYPICAL ABUTMENT SECTION**  
(NOT TO SCALE)

**NOTES**

1. COFFERDAM LIMITS TO BE DETERMINED BY THE CONTRACTOR.
2. THE PAY LIMITS OF "COFFERDAM EXCAVATION, EARTH" AND "COFFERDAM EXCAVATION, ROCK" SHALL BE 600 OUTSIDE THE PERIMETER OF THE FOOTING.
3. UNDERCUT AS DETERMINED NECESSARY BY THE RESIDENT ENGINEER.
4. IF A COFFERDAM IS CONSTRUCTED WHICH IS LARGER THAN THE INDICATED COFFERDAM EXCAVATION PAY LIMITS, PAYMENT FOR ALL UNCLASSIFIED CHANNEL EXCAVATION, INCLUDING THAT PORTION WHICH IS INSIDE THE COFFERDAM BUT OUTSIDE THE COFFERDAM EXCAVATION PAY LIMITS, WILL BE MADE AT THE CONTRACT UNIT PRICE FOR UNCLASSIFIED CHANNEL EXCAVATION.

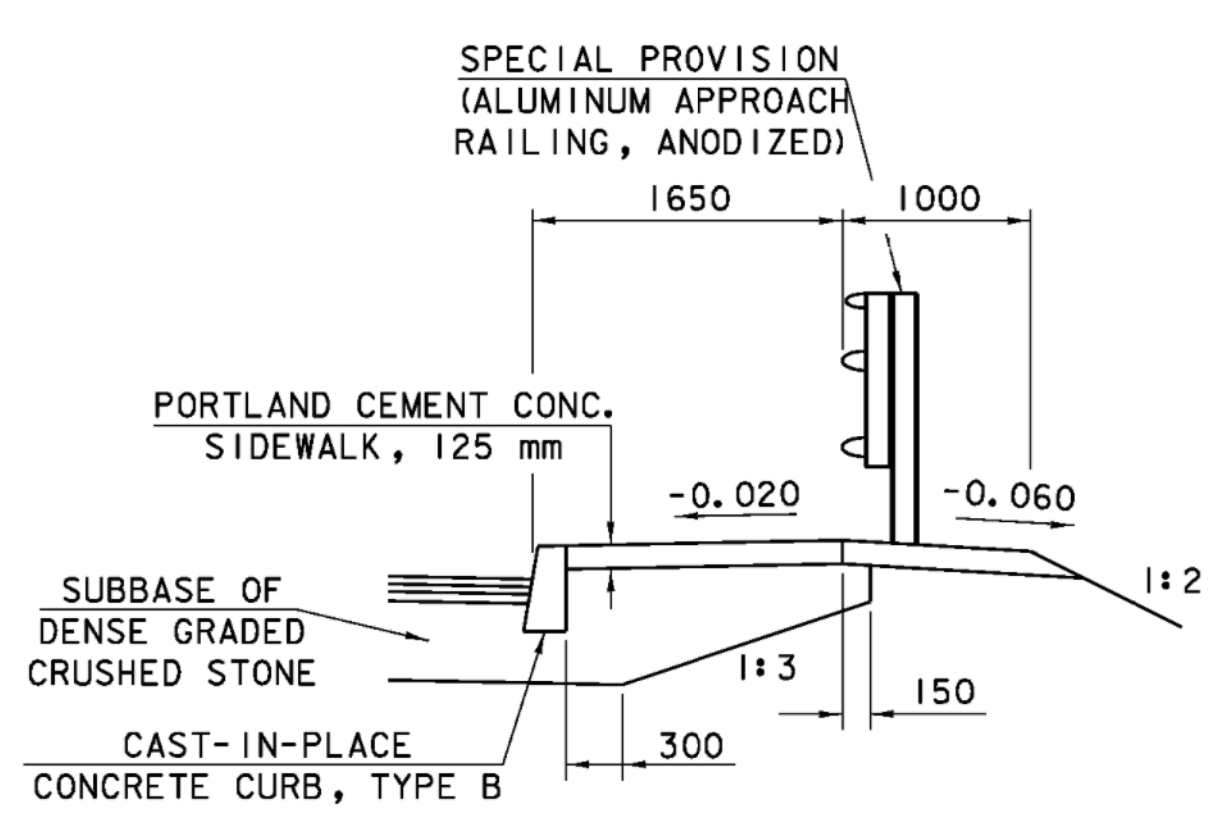


**ROADWAY TYPICAL SECTION**

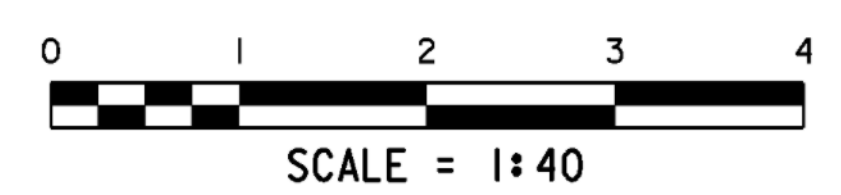


**TYPICAL CHANNEL SECTION**  
(NOT TO SCALE)

GRUBBING MATERIAL SHALL NOT BE PLACED ON THE STONE FILL IN THE AREA UNDER THE BRIDGE. WHENEVER CHANNEL SLOPE INTERSECTS ROADWAY SUBBASE, GRUBBING MATERIAL SHALL BEGIN AT THE BOTTOM OF SUBBASE.



**SIDEWALK TYPICAL SECTION**



MATERIAL ITEM	TOLERANCE
PAVEMENT	±5 mm TOTAL THICKNESS
AGGREGATE SURFACE COURSE	±10 mm
BASE COURSE	±10 mm
SUBBASE	±30 mm
SAND BORROW	±30 mm

**TYPICAL CROSS SECTIONS**

PROJECT NAME:	LINCOLN	PLOT DATE:	29-JAN-2009
PROJECT NUMBER:	BRO 1445 (25)	DRAWN BY:	S. SCRIBNER
FILE NAME:	s96j266typ.dgn	CHECKED BY:	R. WHITCOMB
PROJECT MANAGER:	R. WHITCOMB	TYPICAL CROSS SECTIONS	SHEET 4 OF 58
DESIGNED BY:	S. SCRIBNER		