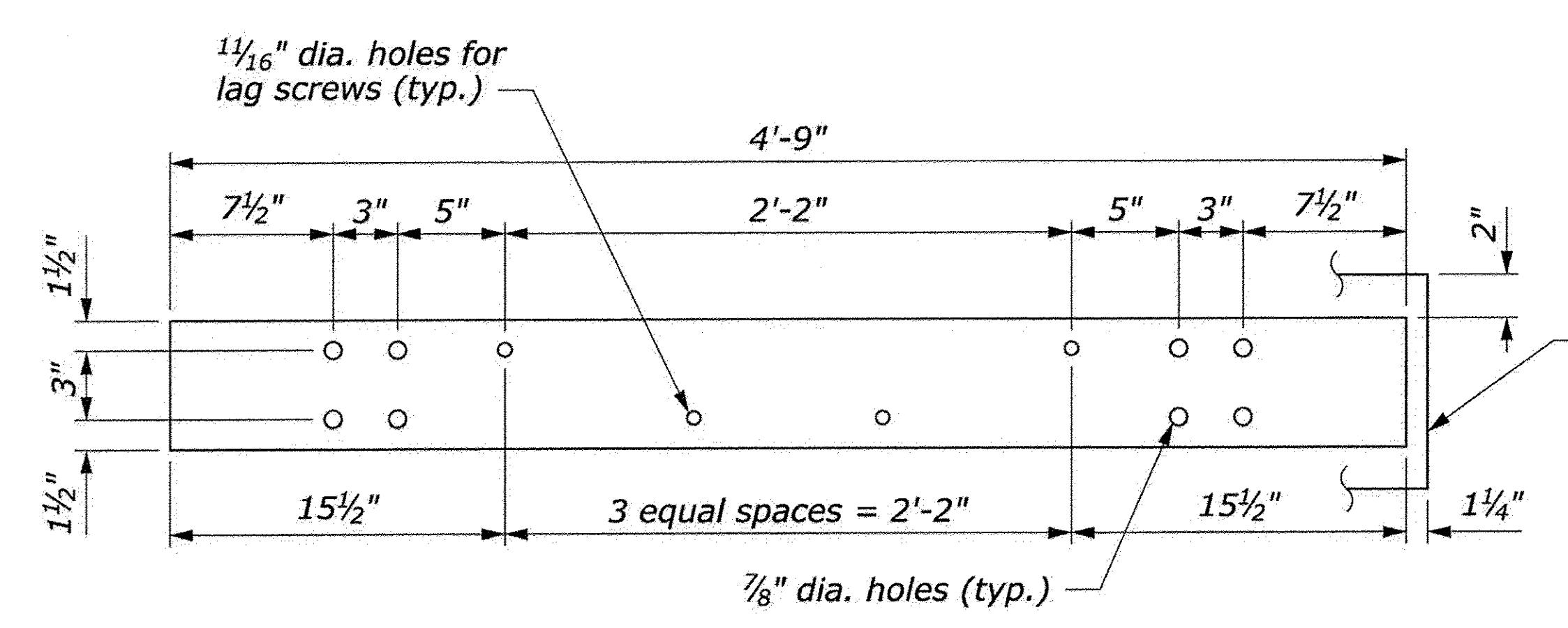


NOTE:

1. Use the Type A, blocked-out, system or the Type B, non-blocked-out, system as specified.
2. Furnish shop bent splice plates. Use the minimum bend angle shown in the table below.
3. See Sheet 2 of 2 for Plan View Layout.
4. See additional notes on sheet 57.



STEEL RAIL
6" x 3/8" x 4'-9"

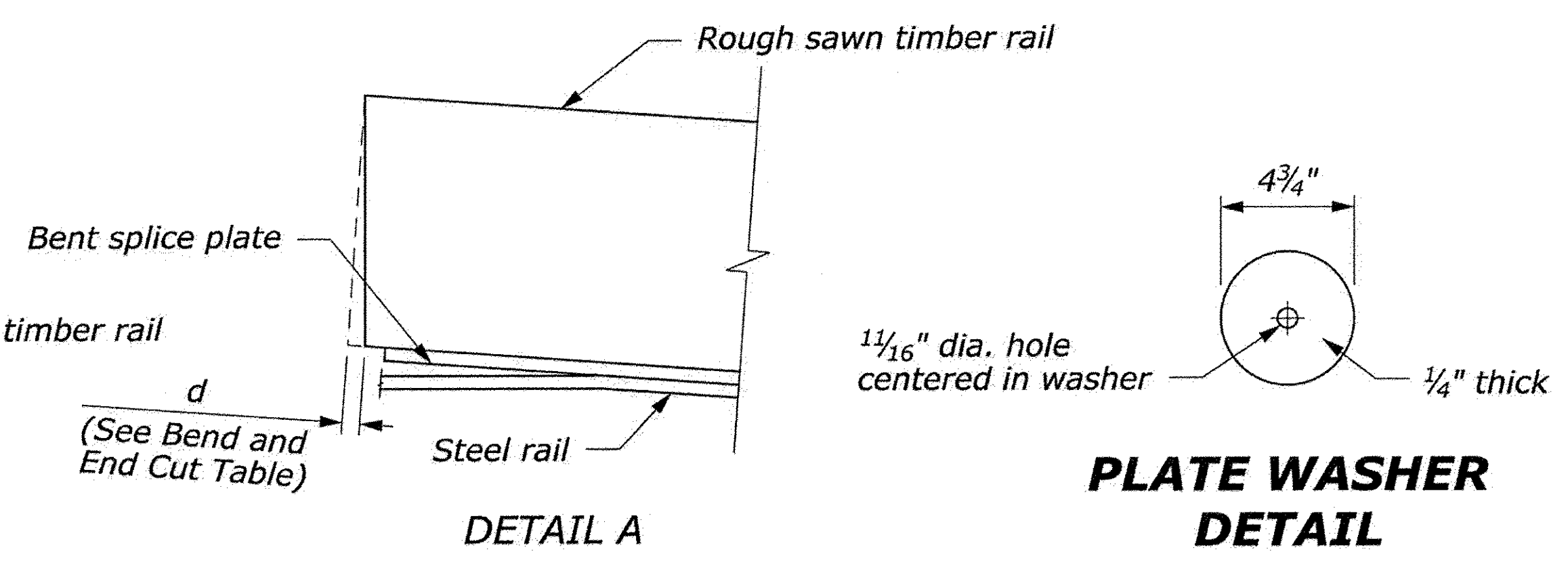
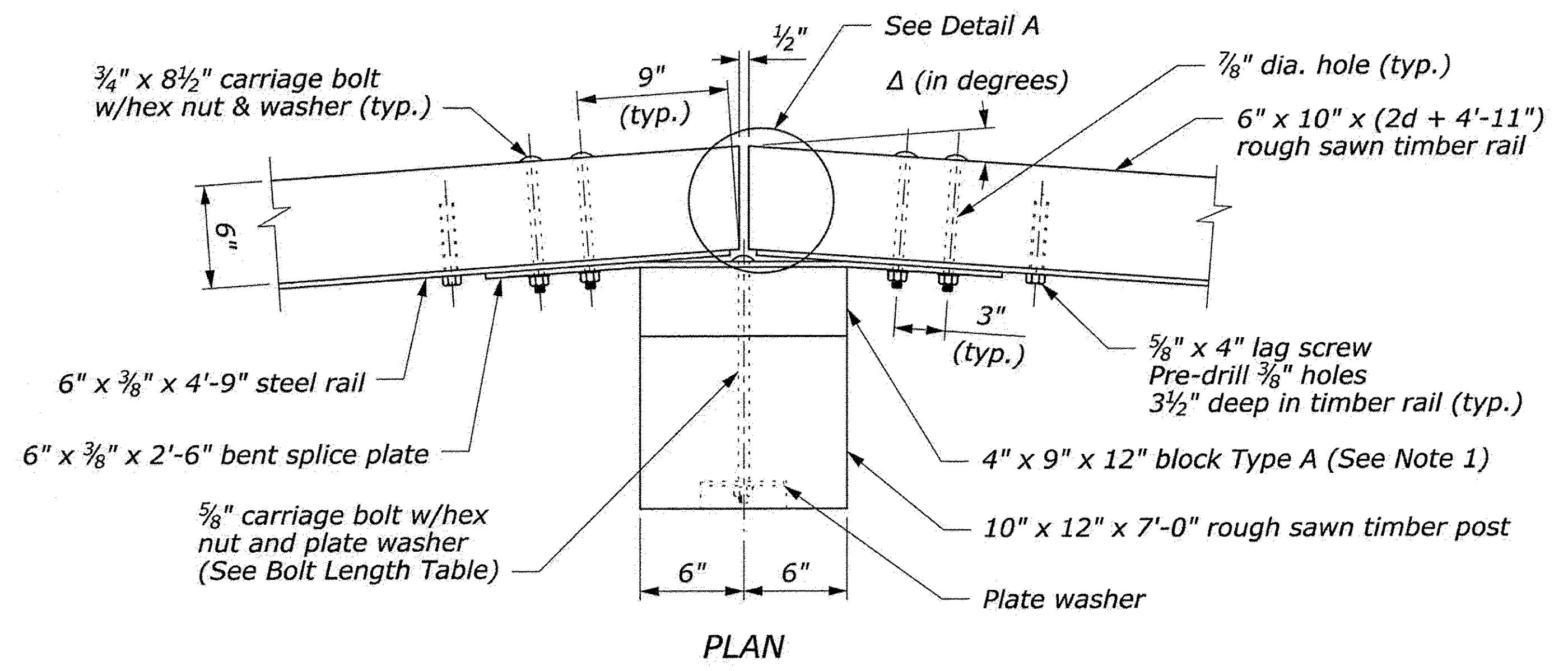
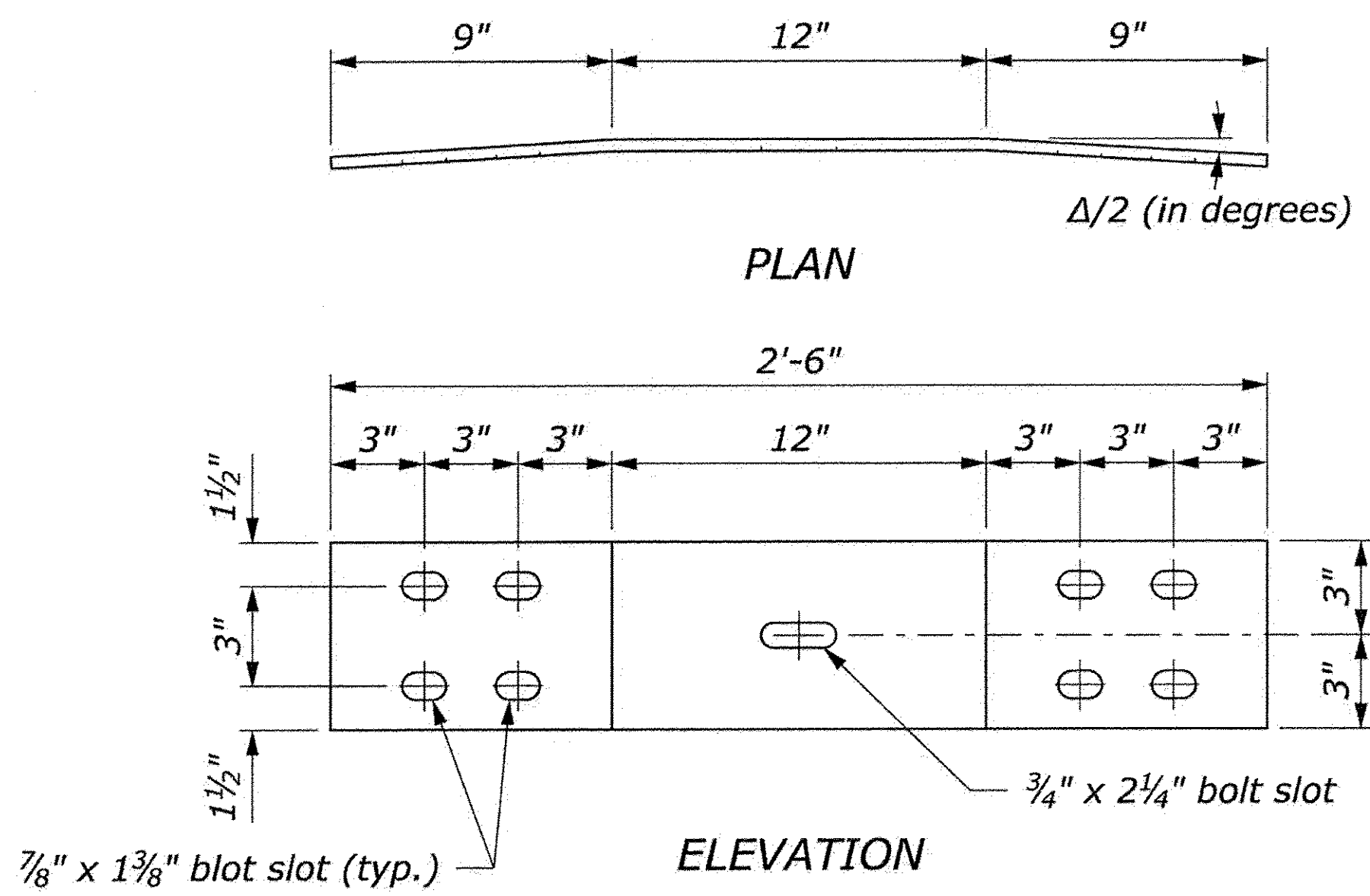


PLATE WASHER DETAIL



PLAN



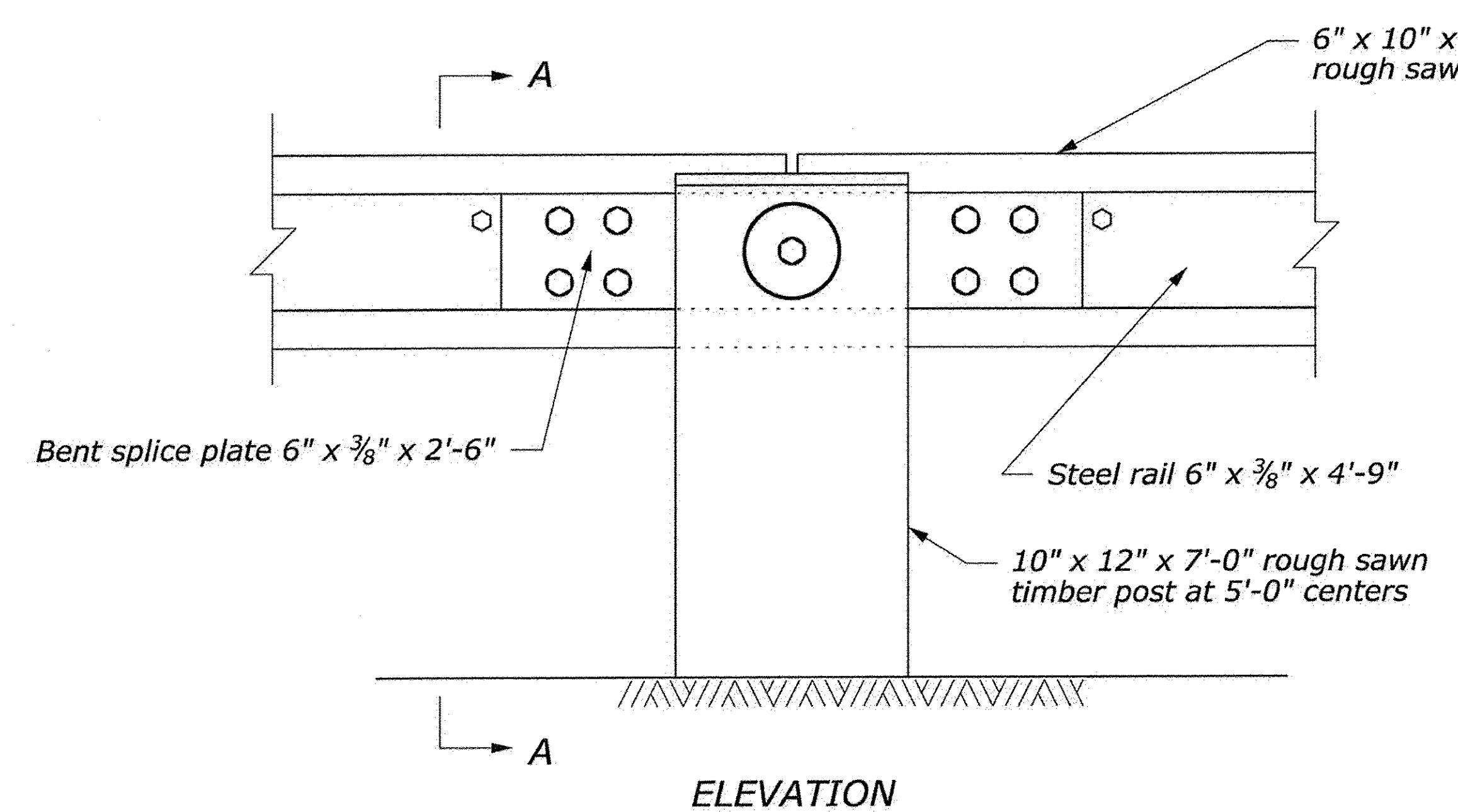
BENT SPLICE PLATE
6" x 3/8" x 2'-6"

BEND AND END CUT TABLE

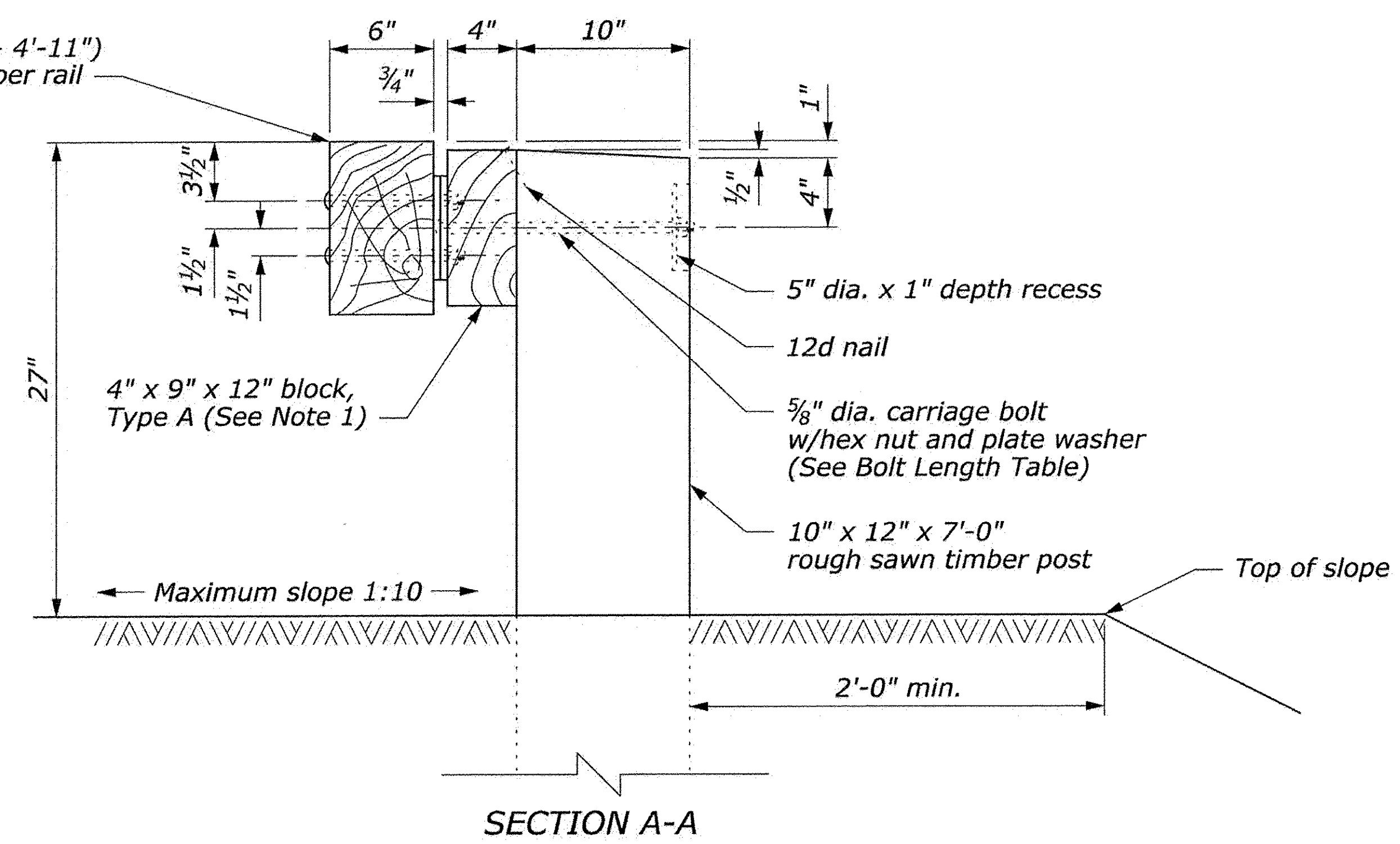
Radius R ft	Δ/2 degrees	d in
20	7.18	3/4
25	5.74	5/8
30	4.78	1/2
35	4.10	7/16
40	3.58	3/8
45	3.18	1/3
50	2.87	5/16
55	2.61	1/4
60	2.39	1/4
65	2.20	1/4
70	2.05	1/4
over 70	flat	0

BOLT LENGTH TABLE

Type A (Block-out)	Type B (No Block-out)
15"	11"



ELEVATION



SECTION A-A

POST CONNECTION

Woodstock BHO 1444(52)
Woodstock ST 1444(58)

U.S. DEPARTMENT OF TRANSPORTATION
FEDERAL HIGHWAY ADMINISTRATION
FEDERAL LANDS HIGHWAY

U.S. CUSTOMARY STANDARD
**STEEL-BACKED TIMBER GUARDRAIL
AROUND CIRCULAR CURVES
70 FOOT RADIUS AND BELOW**
Sheet 1 of 2

2 September 2009 1:39 PM H:\StanDraw\st61763.dgn [USC]