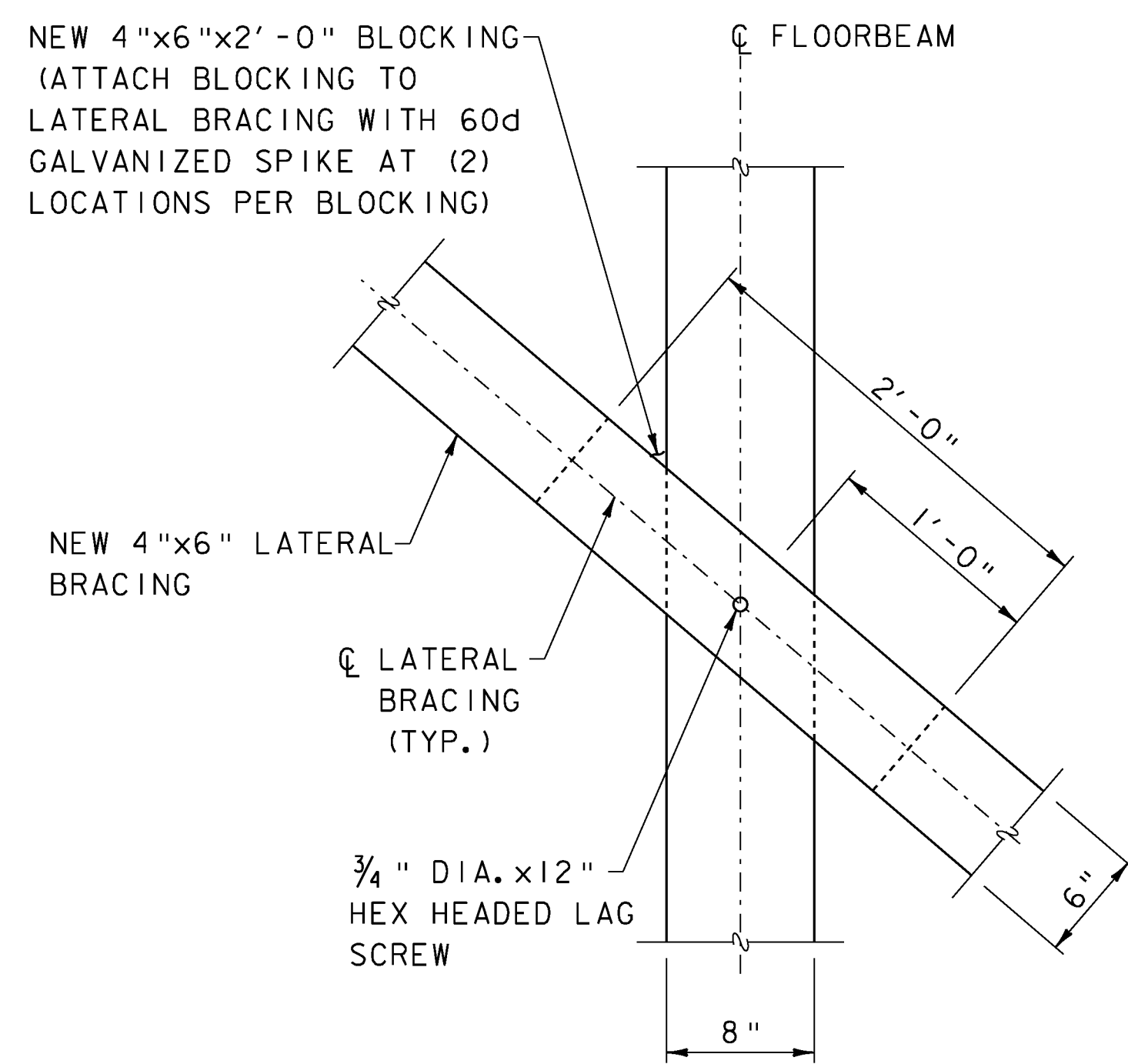


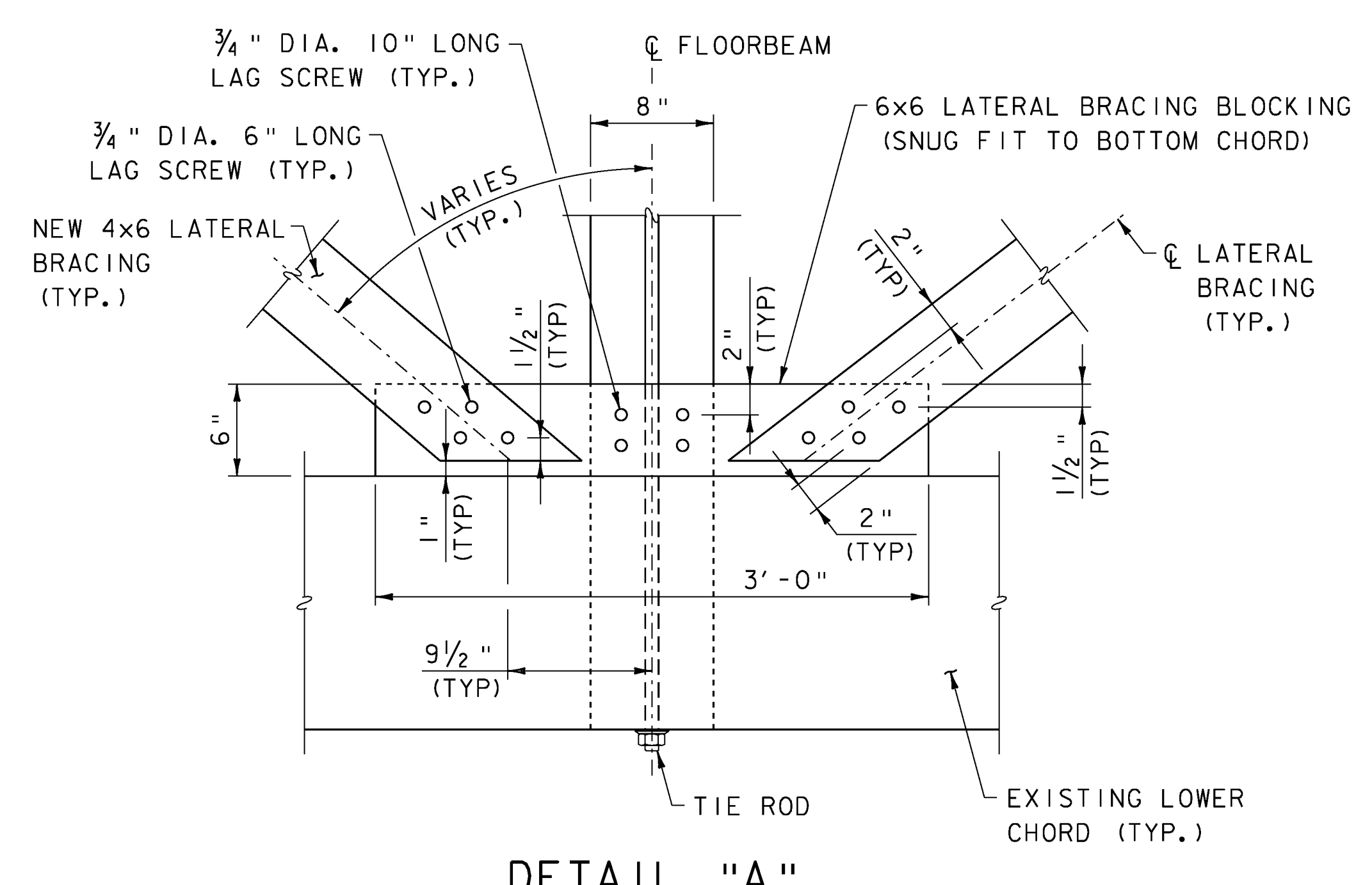
**SECTION A-A**

(SEE SHEET 29 FOR SECTION LOCATION)  
SCALE: 1 1/2" = 1'-0"



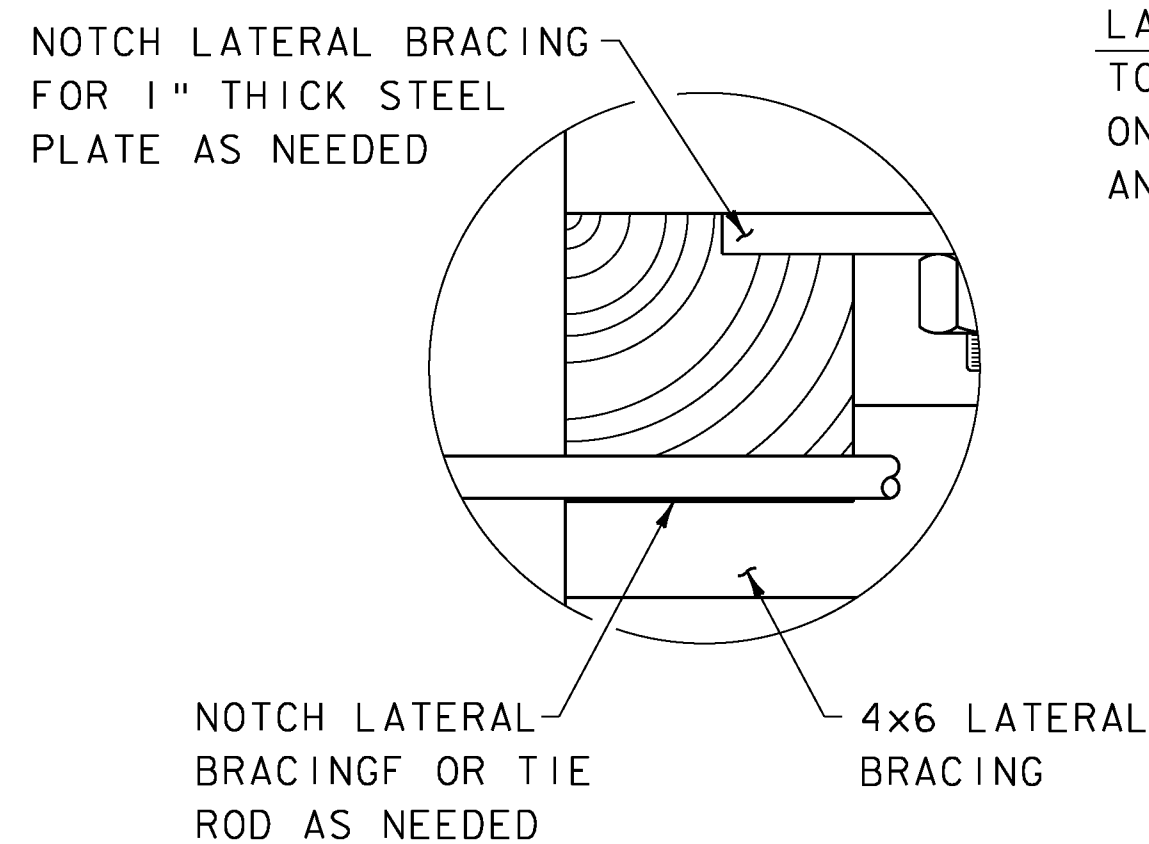
**DETAIL "C"**

(VIEW FROM UNDER BRIDGE)  
SCALE: 1 1/2" = 1'-0"



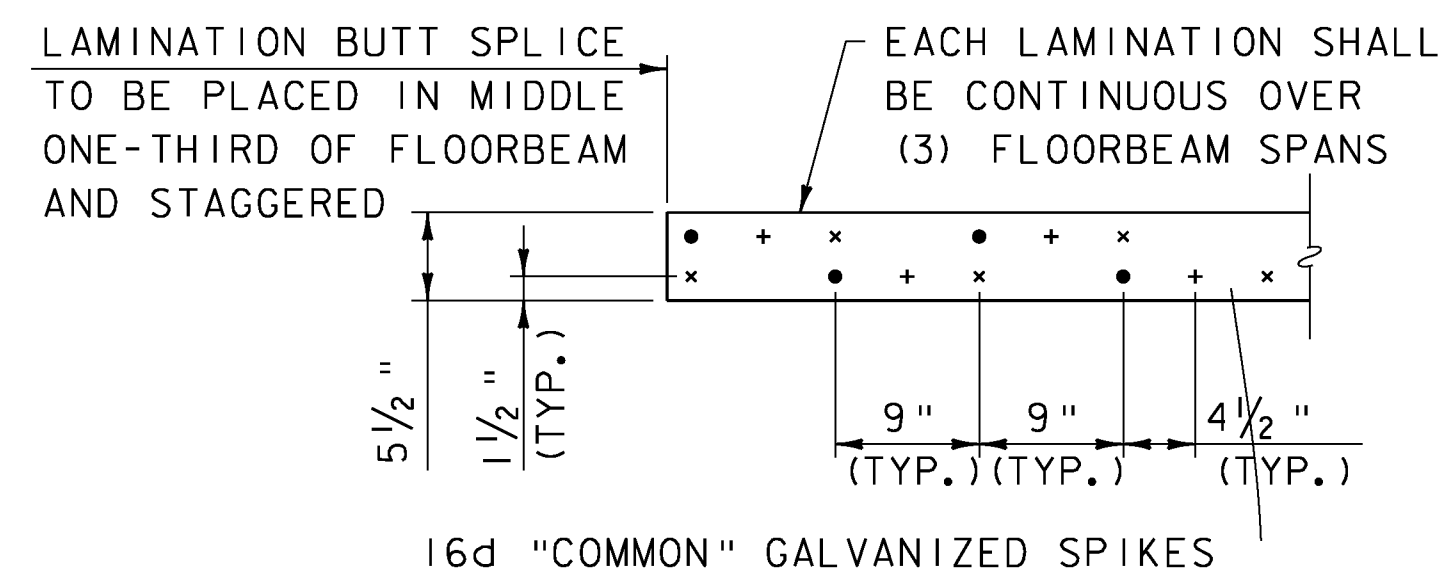
**DETAIL "A"**

SCALE: 1 1/2" = 1'-0"  
(VIEW FROM UNDER BRIDGE)



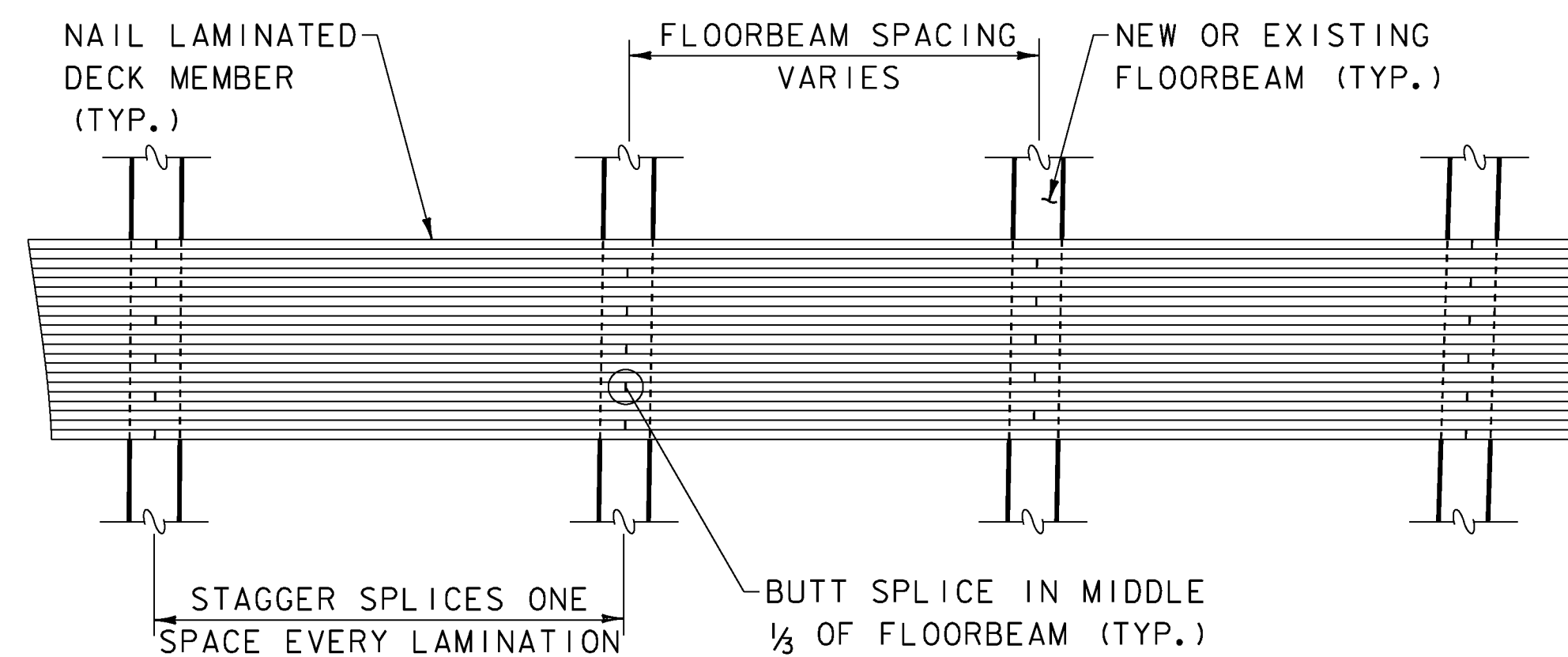
**DETAIL "D"**

SCALE: 1 1/2" = 1'-0"



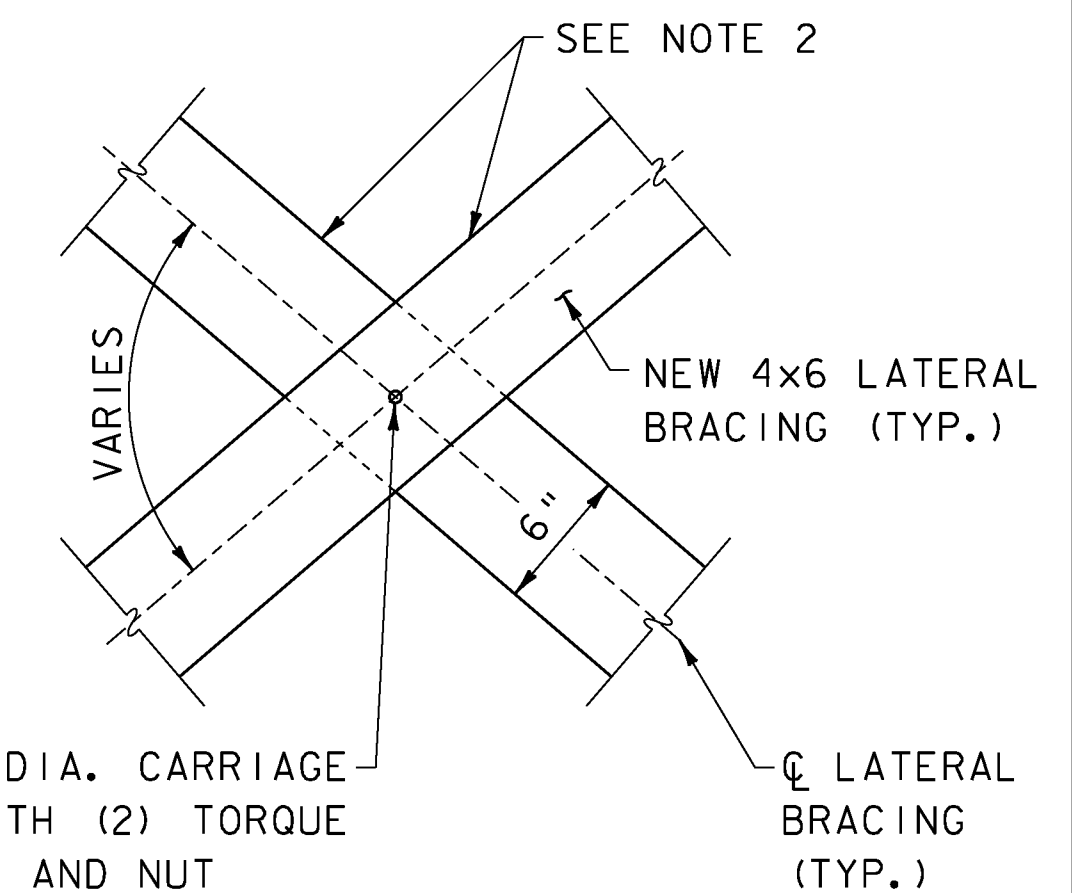
**DECK NAILING PATTERN-ELEVATION**

SCALE: 1" = 1'-0"



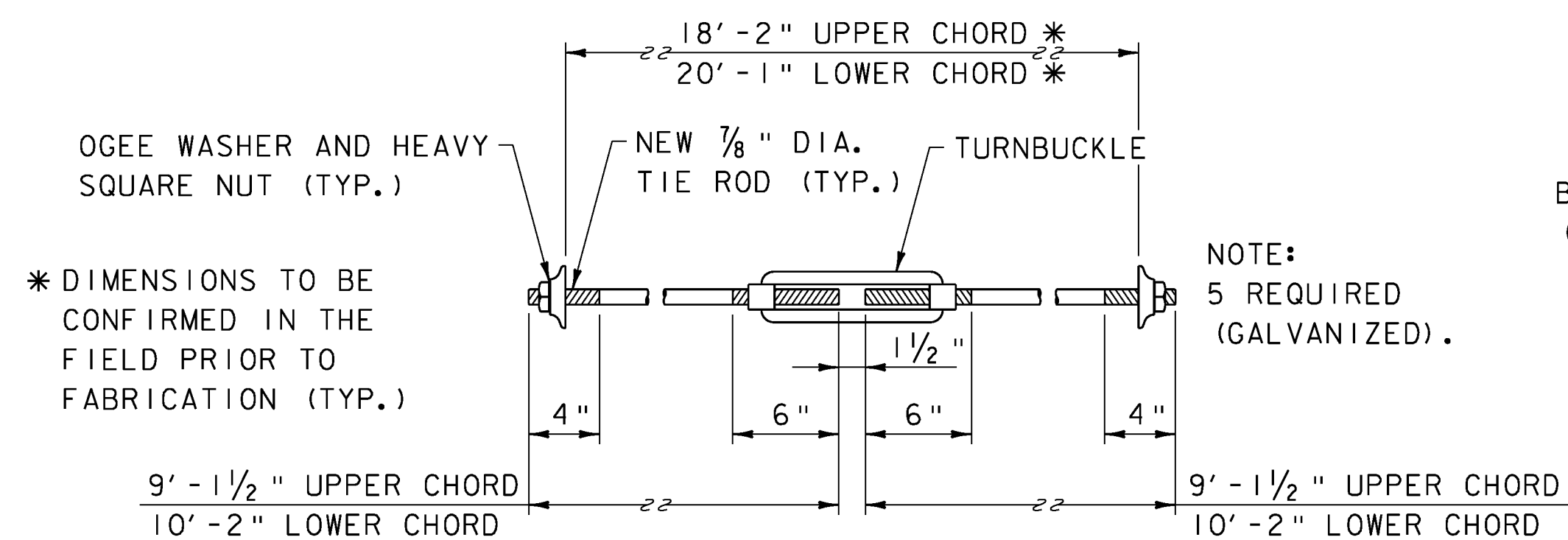
**NAIL LAMINATED DECK BUTT SPLICE DETAIL**

NOT TO SCALE



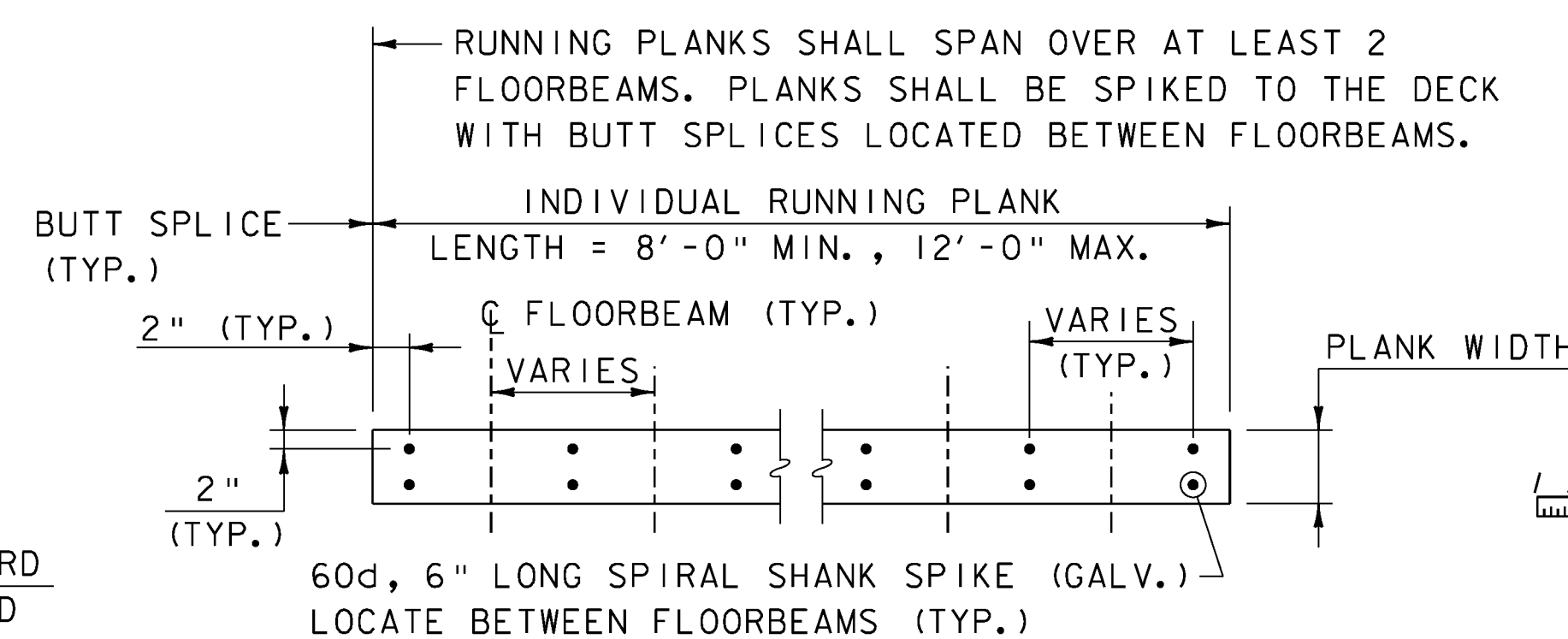
**DETAIL "B" - PLAN**

SCALE: 1 1/2" = 1'-0"



**TIE ROD ASSEMBLY**

SCALE: 1 1/2" = 1'-0"

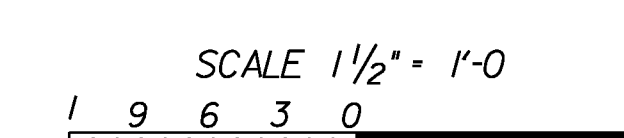
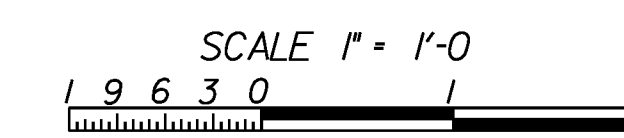


**RUNNING PLANK ATTACHMENT DETAIL**

NOT TO SCALE

**NOTES**

1. CARRIAGE BOLT NUTS SHALL BE TORQUED TO VALUE RECOMMENDED BY MANUFACTURER.
2. NOTCH EACH MEMBER 2" DEEP AT INTERSECTION TO PROVIDE SNUG JOINT AND SECURE WITH 1/2" DIA. CARRIAGE BOLT.
3. FOR DECK LAMINATIONS ADJACENT TO THE EXISTING ARCHES, 1/4" DIAMETER GALVANIZED LAG SCREWS SHALL BE USED INSTEAD OF GALVANIZED SPIKES.



PROJECT NAME: WOODSTOCK	WOODSTOCK
PROJECT NUMBER: BHO 1444(52)	ST 1444(58)
FILE NAME: z96j262d02.dgn	PLOT DATE: 10-JUL-2012
PROJECT LEADER: M. Sargent	DRAWN BY: P. Dustin
DESIGNED BY: P. Dustin	CHECKED BY: R. Joy
BRIDGE DETAILS (2 OF 11)	SHEET 34 OF 68