

GPS CONTROL POINTS

HVCTRL #1

B94061

NORTH = 414918.82  
EAST = 1647137.75  
ELEV. = 716.81

GENERAL LOCATION, WOODSTOCK, ABOUT 2 MI (3.2 KM) EAST OF WOODSTOCK VILLAGE, ABOUT 8.5 MI (13.7 KM) WEST OF WHITE RIVER JUNCTION. TO REACH FROM THE INTERSECTION OF U.S. ROUTE 4 AND VT ROUTE 12 NORTH IN THE CENTER OF WOODSTOCK VILLAGE GO EAST ALONG U.S. ROUTE 4 FOR 2.7 MI (4.3 KM) TO A GRAVEL PULLOUT AND THE MARK ON THE LEFT. THE MARK IS 9.1 (29.9 FT) NORTH OF AND ABOUT 0.5 M (1.6 FT) LOWER THAN THE NORTH EDGE OF PAVEMENT OF U.S. ROUTE 4, 4.3 M (14.1 FT) NORTH OF THE NORTH EDGE OF THE GRAVEL PULLOUT, 4.9 M (16.1 FT) NORTHWEST OF POLE NO. 25T/74/16/11, 16.9 M (55.4 FT) EAST-NORTHEAST OF THE EAST END OF A STEEL BEAM GUARD RAIL, AND 0.7 M (2.3 FT) SOUTH OF A FIBERGLASS WITNESS POST. IT IS SET FLUSH WITH THE GROUND SURFACE IN THE TOP OF A 30-CM DIAMETER CONCRETE MONUMENT POURED TO A DEPTH OF 1.8 M.

HVCTRL #8

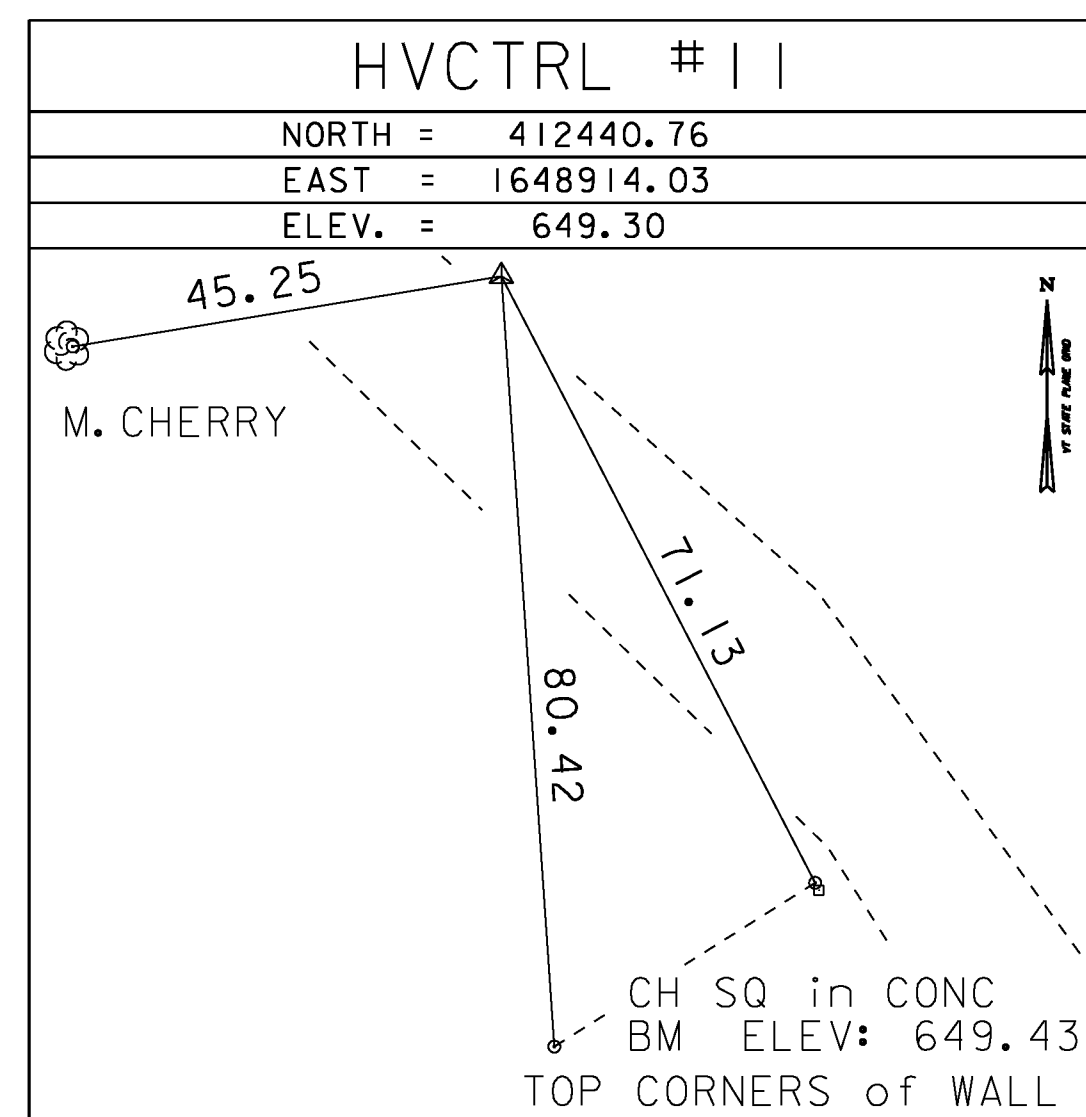
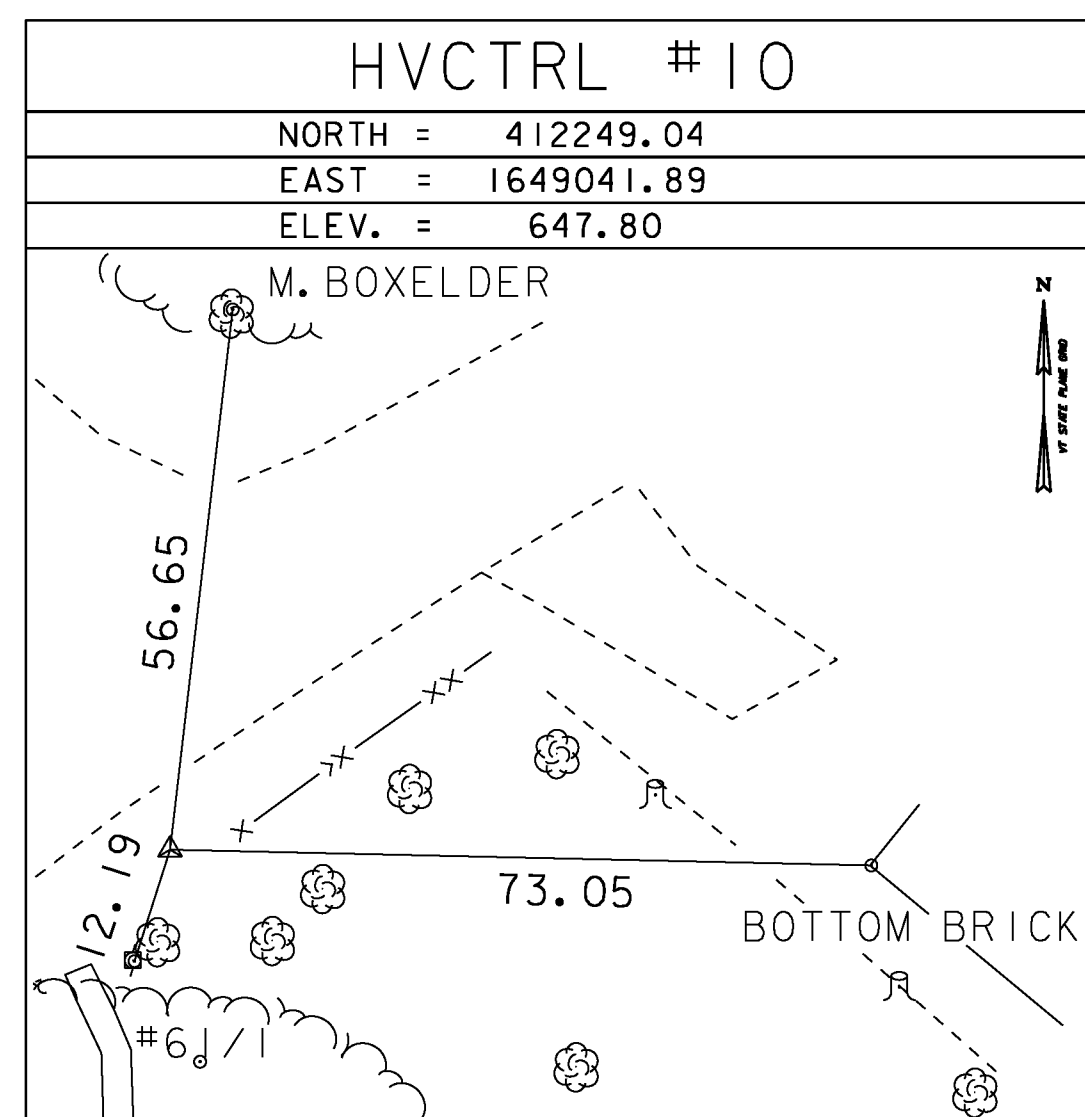
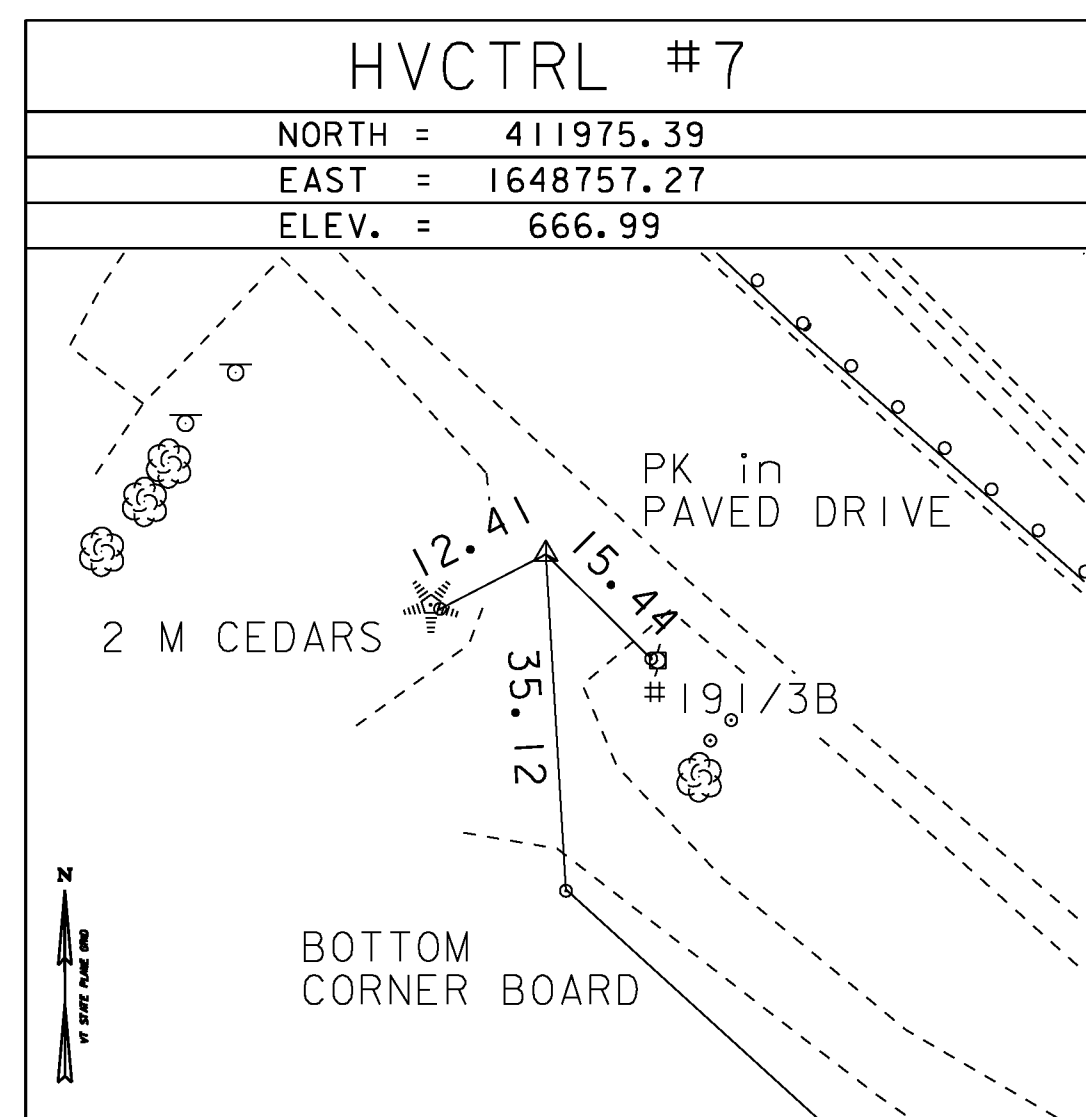
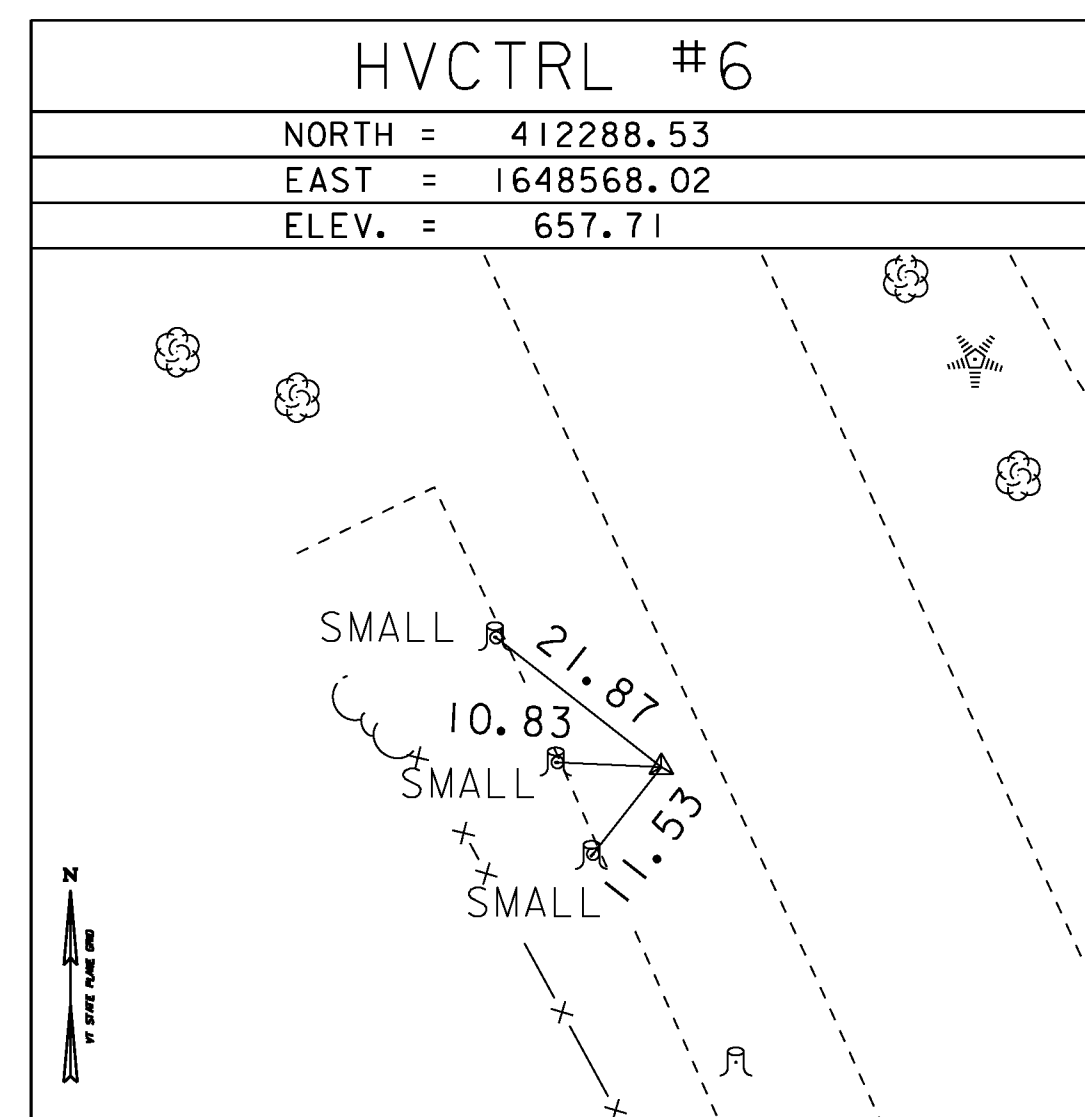
TAFTSVILLE

NORTH = 412277.58  
EAST = 1648740.65  
ELEV. = 412288.53

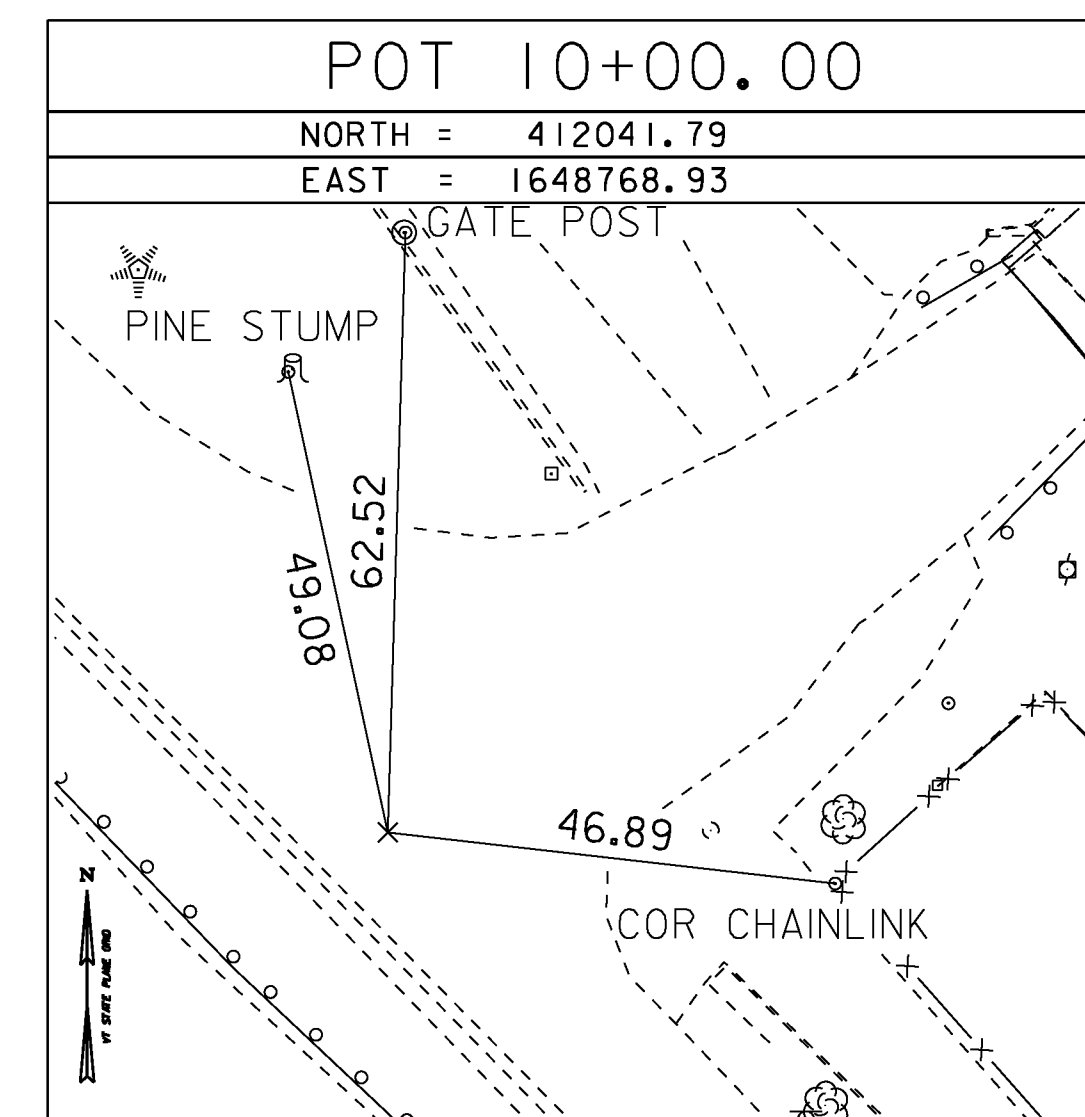
GENERAL LOCATION, TAFTSVILLE, ABOUT 2.5 MI (4.0 KM) EAST OF WOODSTOCK VILLAGE, ABOUT 8 MI (12.9 KM) WEST OF WHITE RIVER JUNCTION. OWNERSHIP, CENTRAL VERMONT PUBLIC SERVICE CORPORATION, 77 GROVE STREET, RUTLAND, VT. 05701. CONTACT STEVE EDGERTON, PHONE 802-773-2711. TO REACH FROM THE INTERSECTION OF U.S. ROUTE 4 AND VT ROUTE 12 NORTH IN THE CENTER OF WOODSTOCK VILLAGE GO EAST ALONG U.S. ROUTE 4 FOR 3.3 MI (5.3 KM) TO THE TAFTSVILLE POWER DAM LEFT AND THE MARK ON THE LEFT, SET IN THE TOP OF THE NORTHEAST CORNER OF THE CONCRETE INTAKE STRUCTURE AT THE HEADWORKS OF THE DAM. THE MARK IS ABOUT 8.5 M (27.9 FT) NORTH OF THE DAM, 0.5 M (1.6 FT) SOUTH OF THE NORTH EDGE OF THE CONCRETE INTAKE STRUCTURE, 0.7 M (2.3 FT) WEST OF THE EAST EDGE OF THE STRUCTURE, AND 16.0 M (52.5 FT) EAST OF AN ELECTRIC POLE. NOTE--IT IS A BLANK DISK.

\* DESCRIPTION PROVIDED BY VERMONT AGENCY OF TRANSPORTATION GEODETIC SURVEY UNIT

TRAVERSE TIES

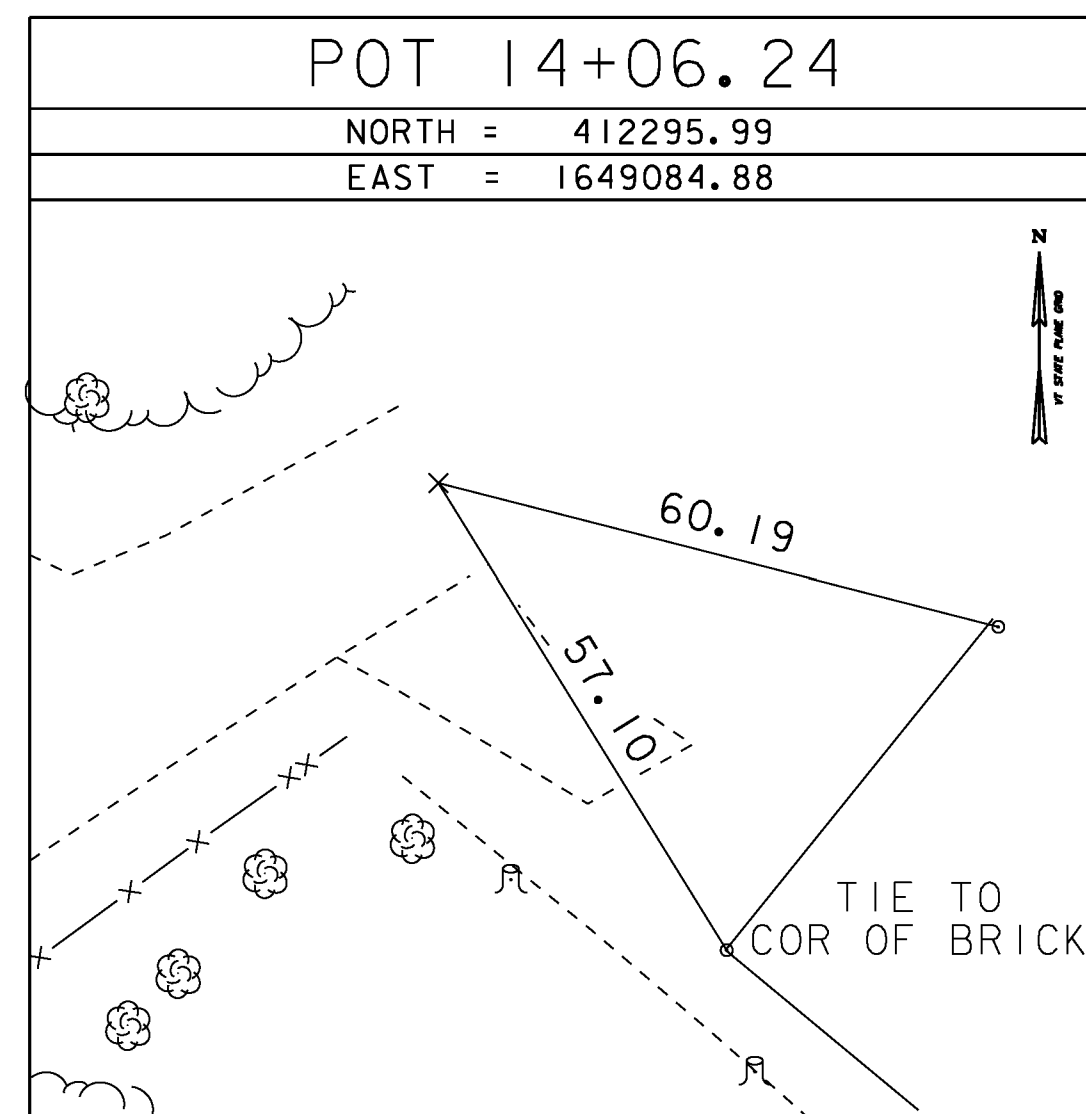
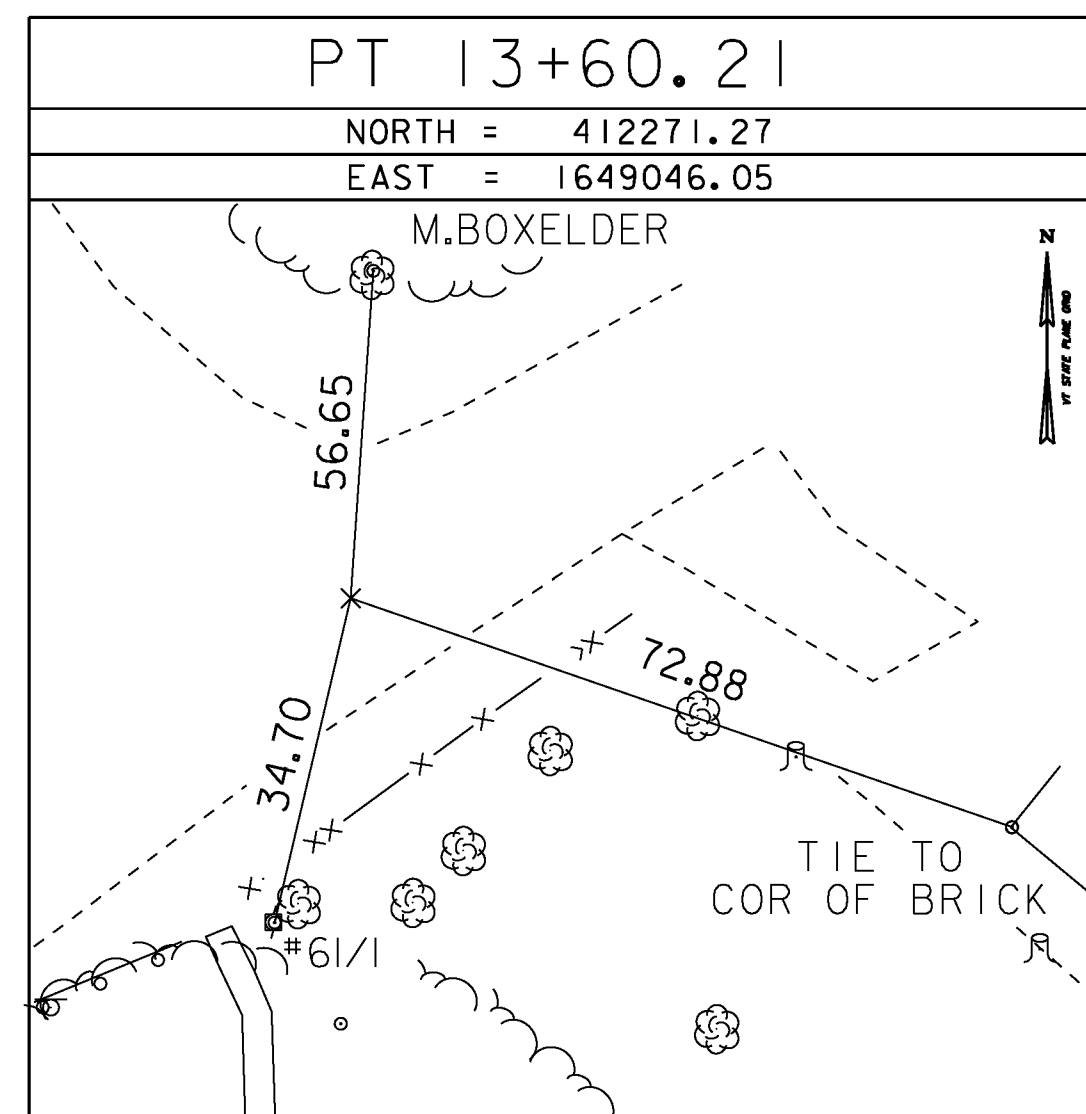
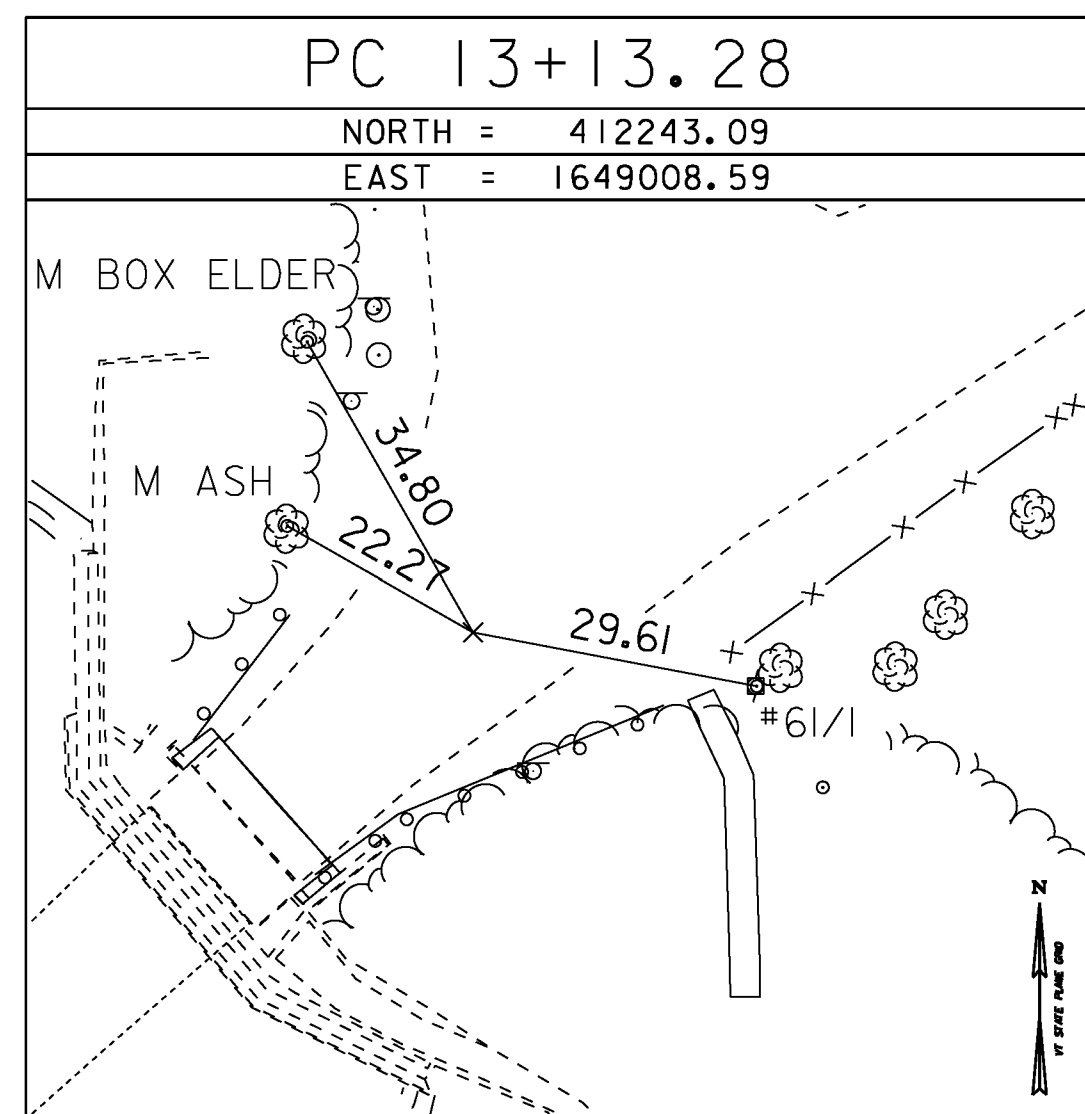
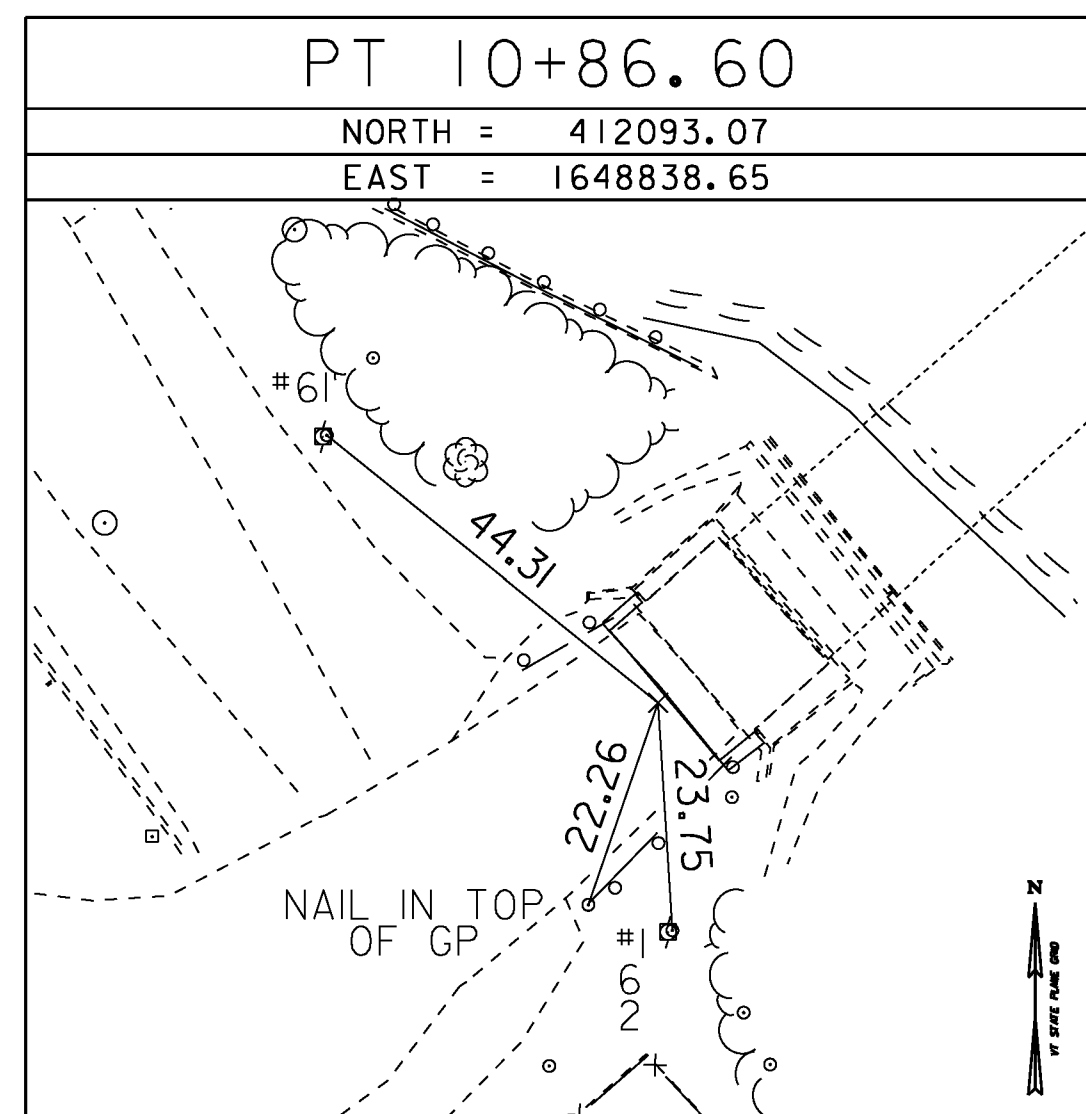
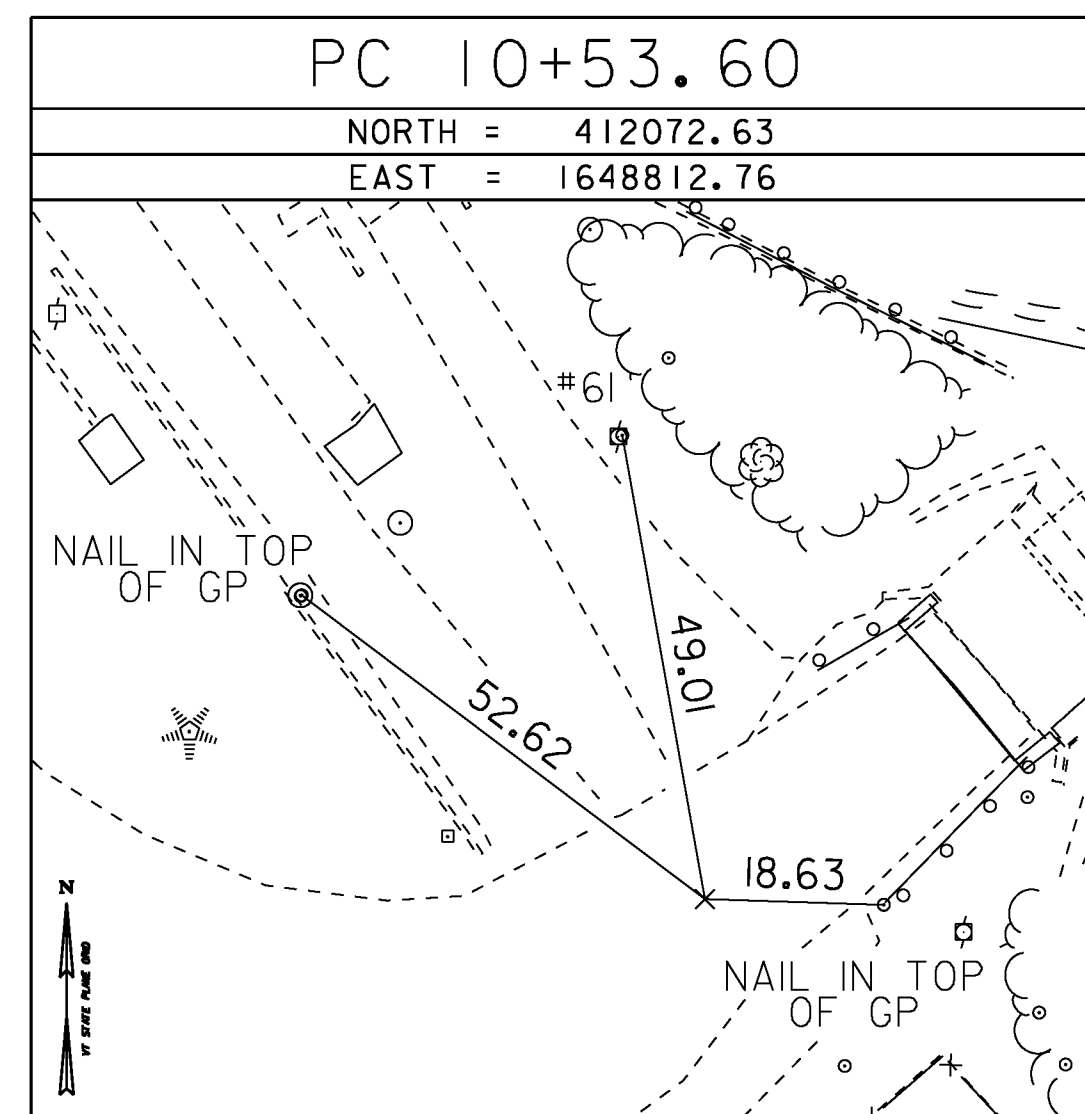


ALIGNMENT TIES



\* MAIN TRAVERSE COMPLETED: R.GILMAN PC/P.WINTERS 04/07/2004 on previous job [PMS 04X500]

ALIGNMENT TIES



\*ALIGNMENT STACKED AND TIED 8/30/2010 BY R.GILMAN P.C. & P.WINTERS

DATUM	
VERTICAL	NAVD 88
HORIZONTAL	NAD 83 (96)
ADJUSTMENT	Compass

**NOTE**

- THE SURVEY TIES DEPICTED ON THIS SHEET WERE OBTAINED PRIOR TO FLOODING AND PRIOR TO OVERHEAD UTILITY RELOCATION. SOME TIES MAY REQUIRE ADJUSTING BY THE ENGINEER PRIOR TO CONSTRUCTION.



PROJECT NAME: WOODSTOCK WOODSTOCK  
PROJECT NUMBER: BHO 1444(52) ST 1444(58)

FILE NAME: z96j262t1.dgn PLOT DATE: 29-JUN-2012  
PROJECT LEADER: M. Sargent DRAWN BY: P. Dustin  
DESIGNED BY: VTRANS CHECKED BY: R. Joy  
TIE SHEET SHEET 7 OF 68