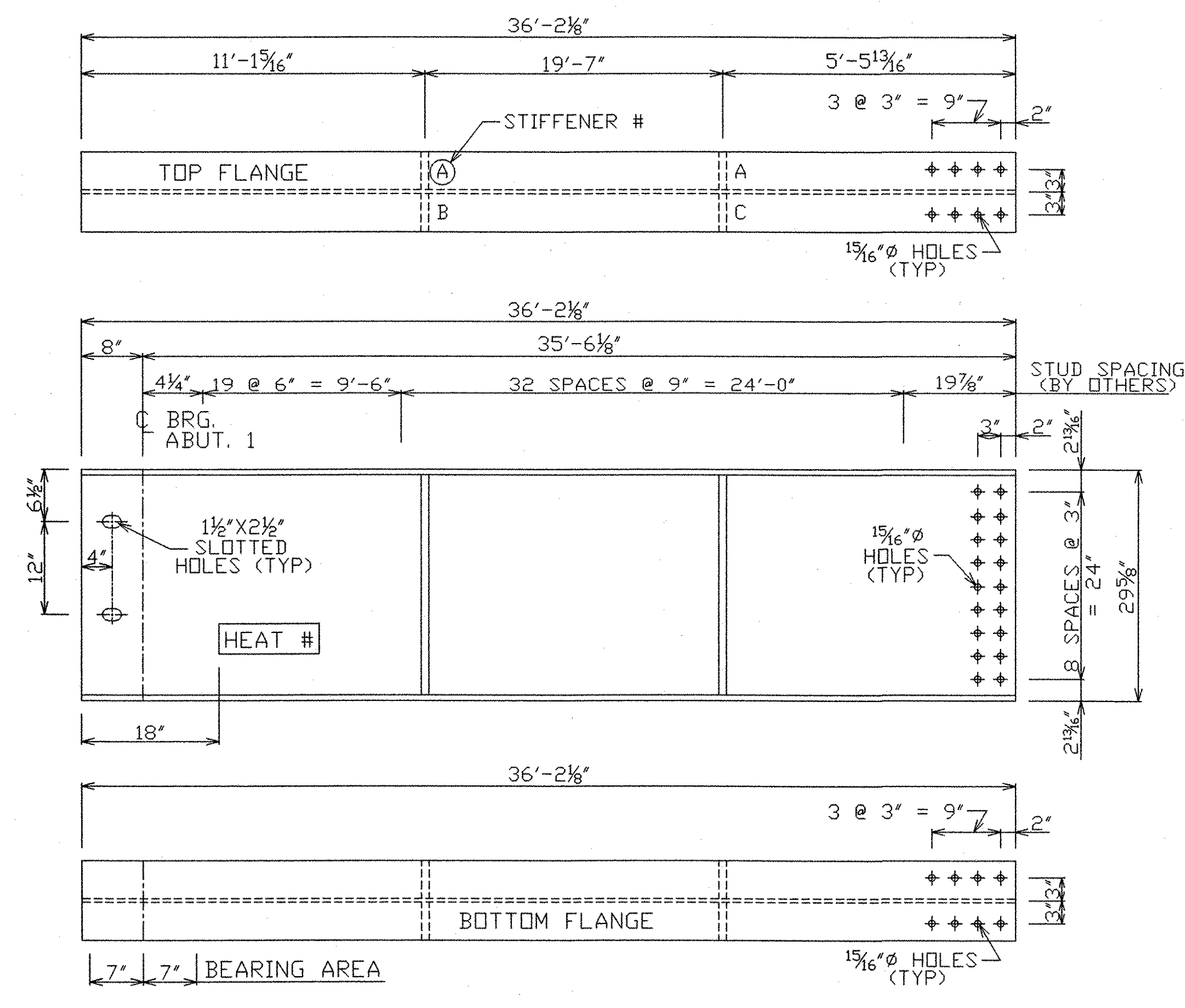
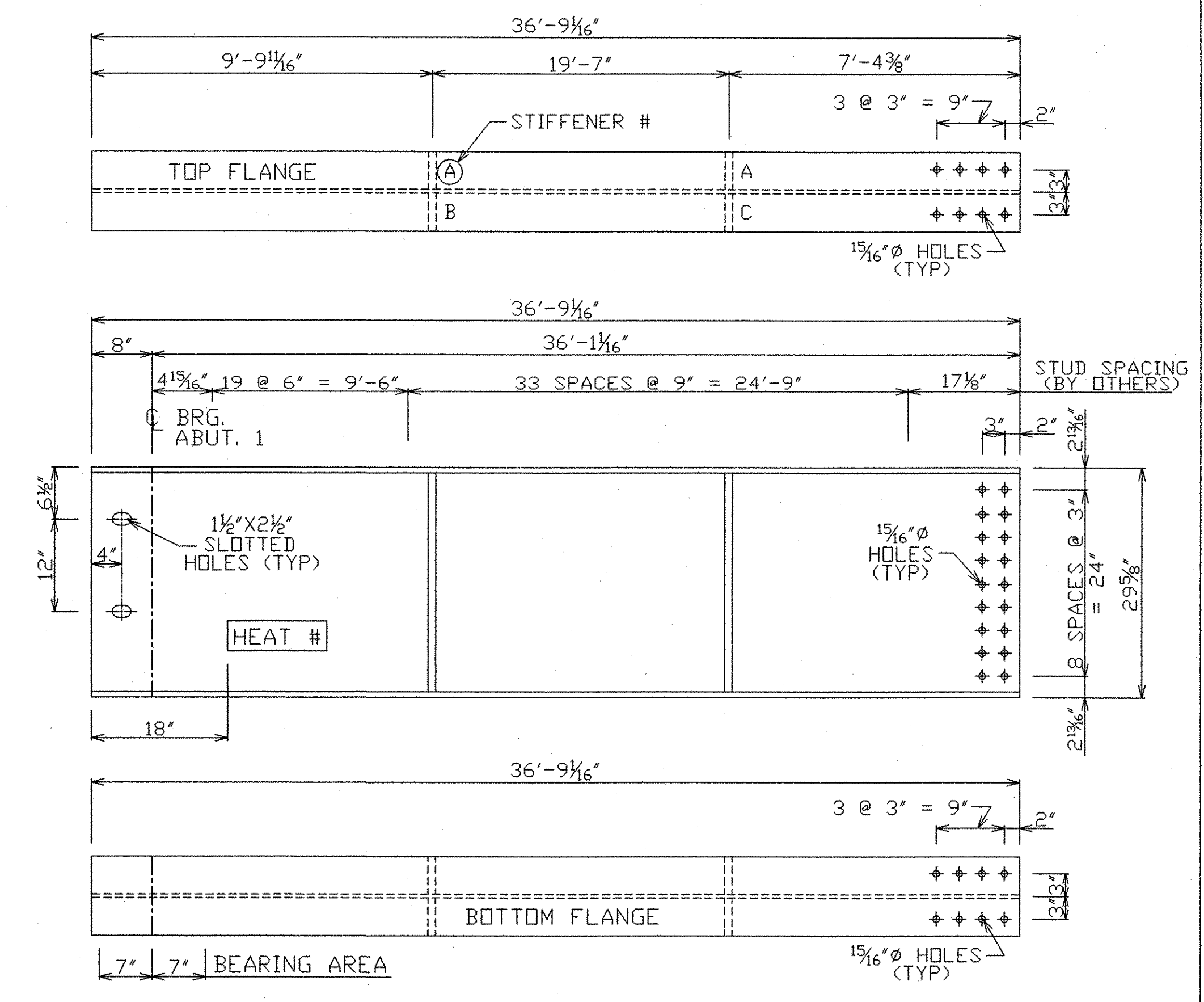


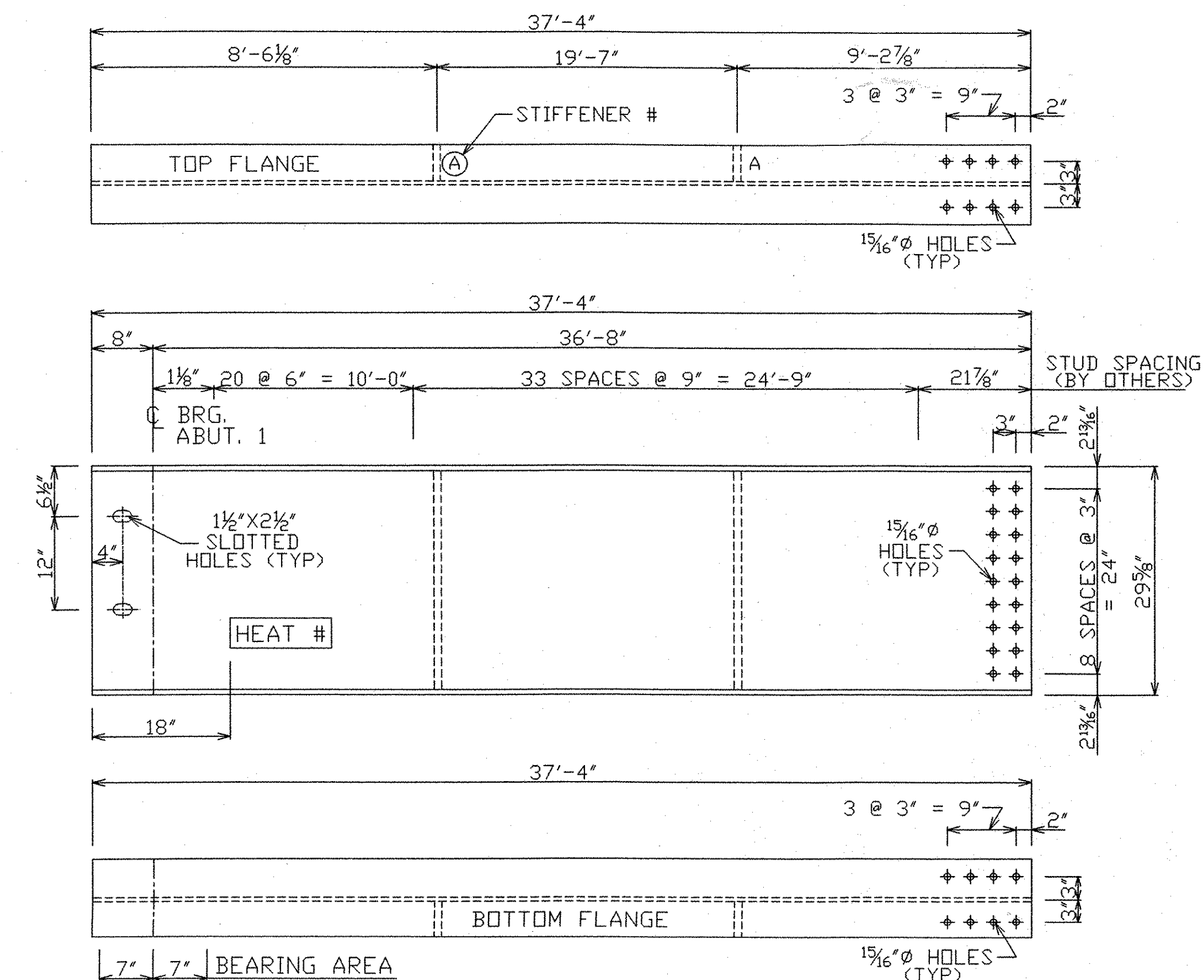
**BEAM 1A - 1 REQ'D**  
W30X99 (CVN)



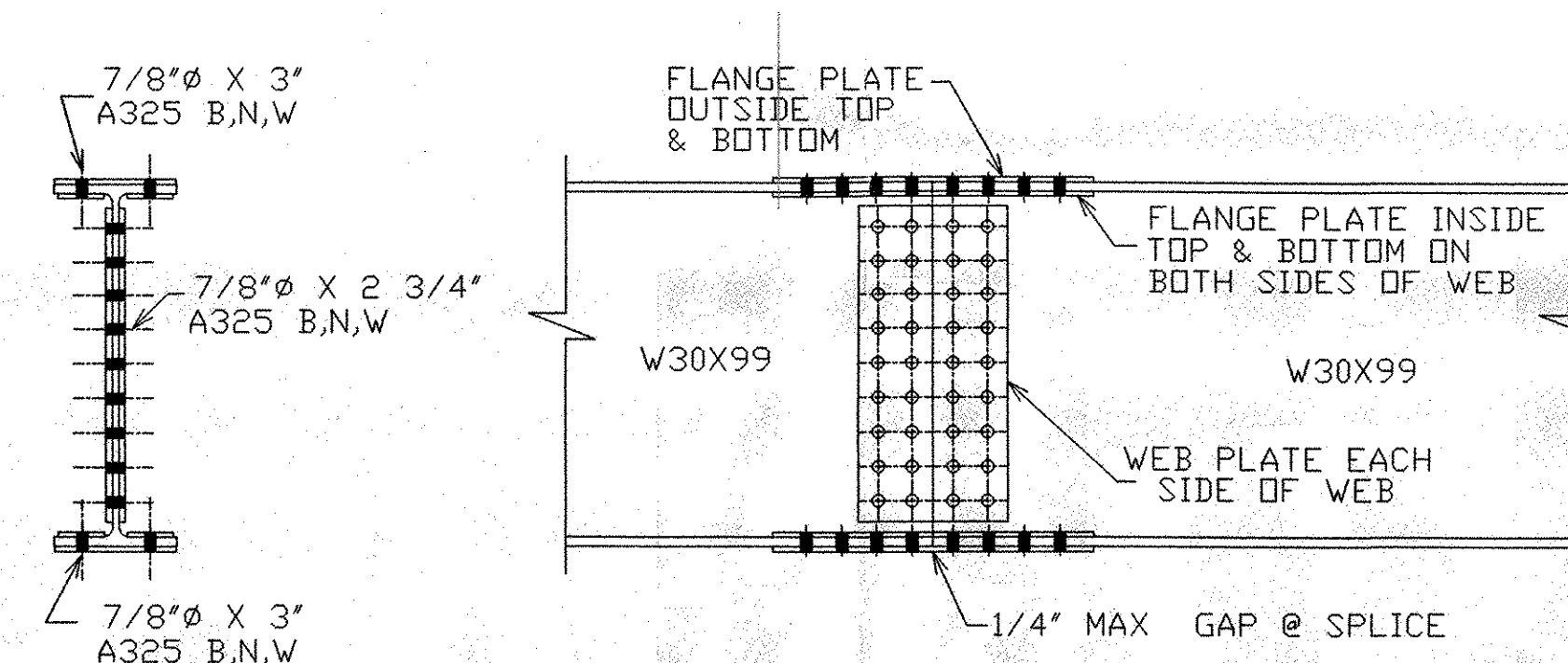
**BEAM 2A - 1 REQ'D**  
W30X99 (CVN)



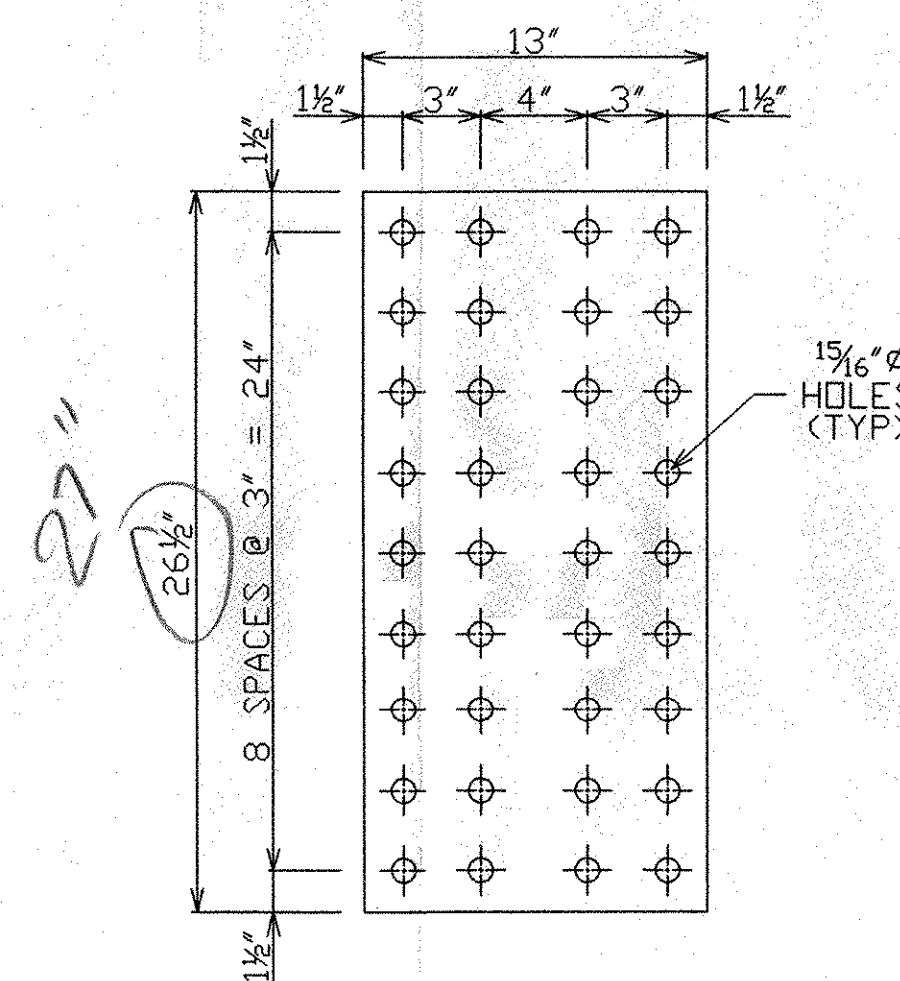
**BEAM 3A - 1 REQ'D**  
W30X99 (CVN)



**BEAM 4A - 1 REQ'D**  
W30X99 (CVN)

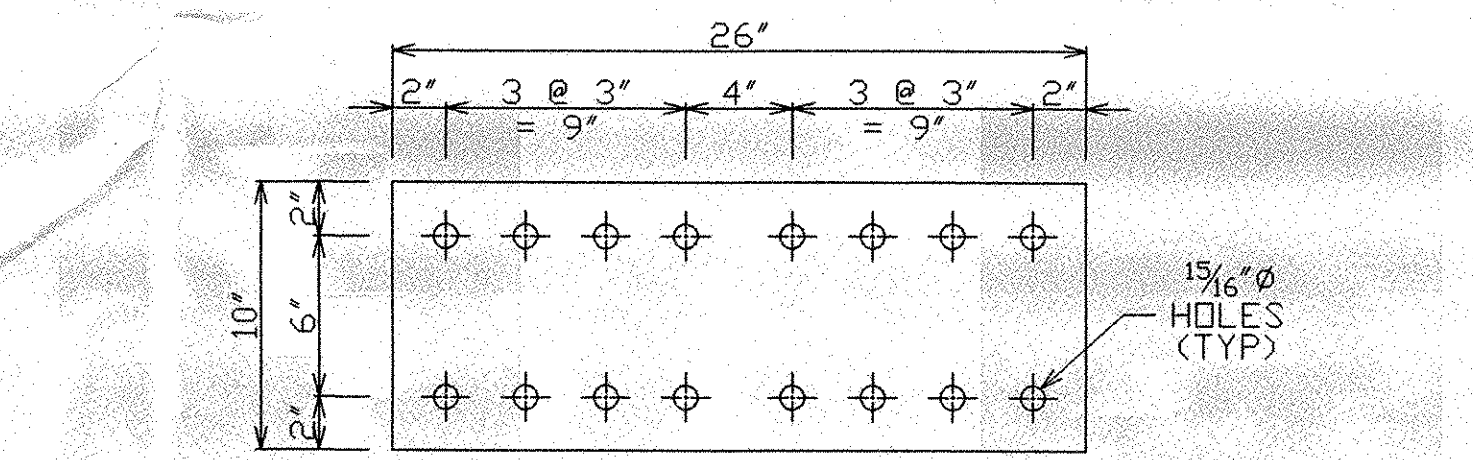


**FIELD SPLICE DETAIL**



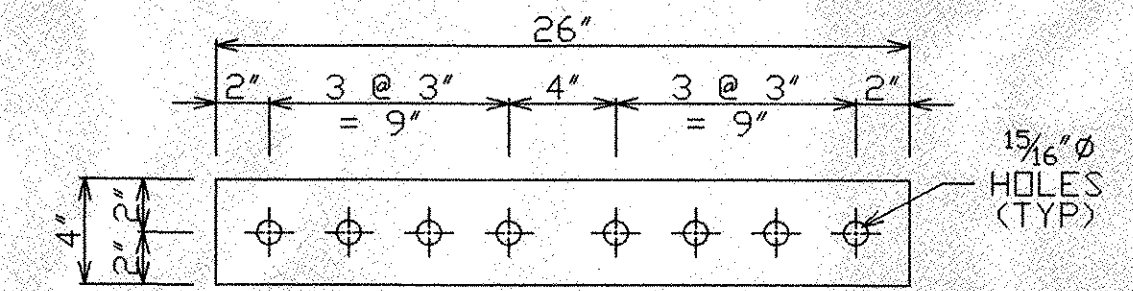
**WEB PLATE - 8 REQ'D**  
P 1/2" X 13" X 27" (CVN)

← ROLLING DIRECTION



**OUTSIDE FLANGE PLATE - 8 REQ'D**  
P 1/2" X 10" X 26" (CVN)

← ROLLING DIRECTION



**INSIDE FLANGE PLATE - 16 REQ'D**  
P 1/2" X 4" X 26" (CVN)

← ROLLING DIRECTION

BEAM DETAILS  
PROJECT NO. TH2-9625

US BRIDGE  
201 WHEELING AVE.  
P.O. BOX 757  
CAMBRIDGE, OHIO 43725

NO.	DATE	REVISIONS	BY	PAB	FABRICATION DRAWING	ITEM 506.50
1	12/13/04	AS PER REVIEW			BEAM BRIDGE	BRIDGE NO. 46
					TOWN OF NORWICH	TOWN HIGHWAY 3
					WINDSOR COUNTY, VERMONT	OVER OMPOMPANOSUC RIVER
					DESIGN	DRAWING NO.
					DRAWN P. BAKER	NORWICH
					DATE OCT. 12, 2004	
					CHECK/DATE J. HOFFMAN 10/14/04	FABRICATOR US BRIDGE
						SHEET 2 OF 5

NOTE: DRAWINGS RELATIVE DO NOT SCALE

RECEIVED  
CHKD BY [Signature] OK'D BY [Signature]  
JAN 03 2005  
RESUBMIT APPROVED [Signature]  
BY DATE

12/15/04