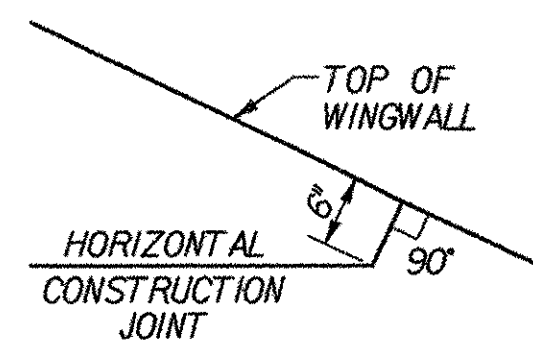


NOTES

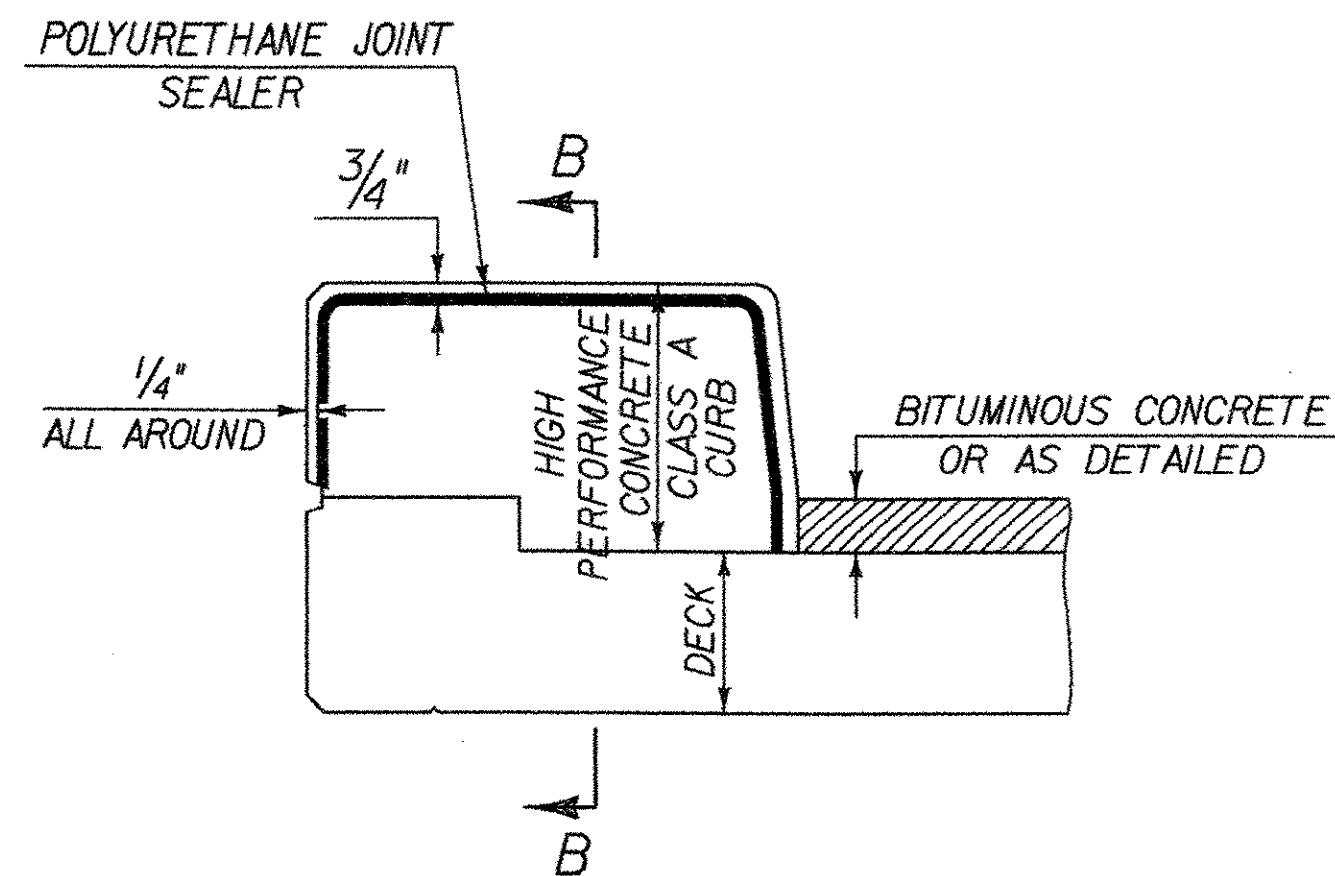
1. INDICATES AREA ALONG DECK AND UP FACE OF CURB FOR PLACEMENT OF 2 COATS OF POLYURETHANE MEMBRANE.
2. POLYURETHANE MEMBRANE AND BLAST CLEANING SHALL BE INCLUDED IN THE UNIT PRICE BID FOR SHEET MEMBRANE WATERPROOFING.
3. SHEET MEMBRANE WATERPROOFING SHALL EXTEND TO FACE OF CURB AS SHOWN ABOVE.
4. BLAST CLEAN 3'-0" FROM FACE OF CURB AND 3" UP CURB FACE PRIOR TO PLACING MEMBRANE.
5. ALL CONCRETE IN CURB SHALL BE HIGH PERFORMANCE, CLASS A CONCRETE.

CONCRETE CURB AND RAIL DETAIL

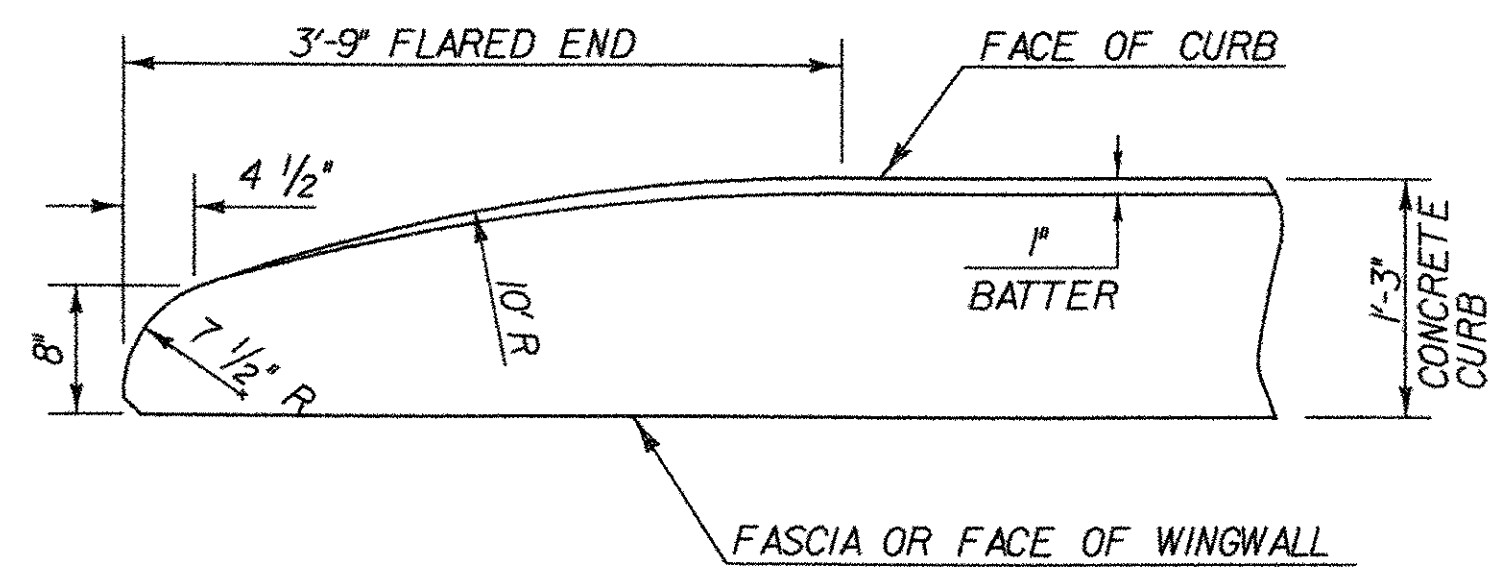
SCALE 1 1/2" = 1'-0"



HORIZONTAL CONSTRUCTION JOINT IN WINGWALL



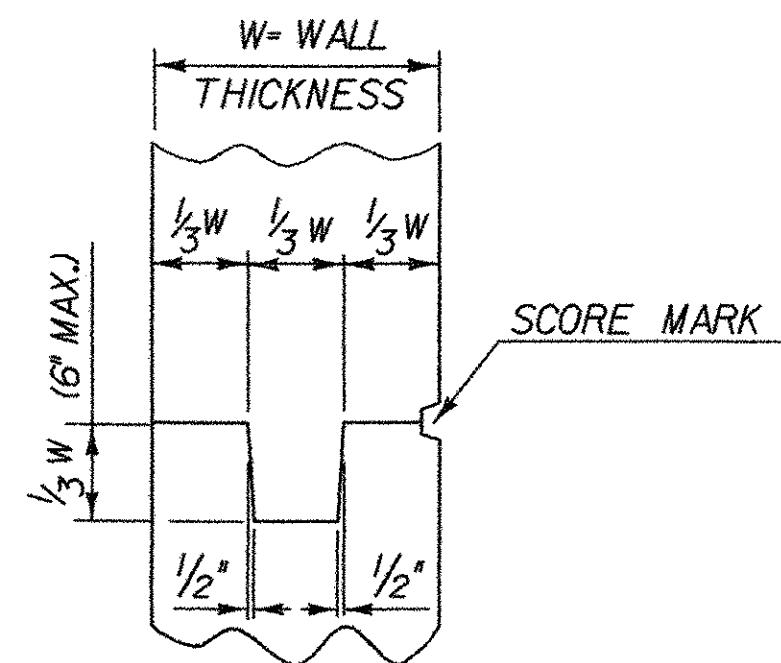
TYPICAL SECTION THROUGH CONCRETE CURB CONSTRUCTION JOINT



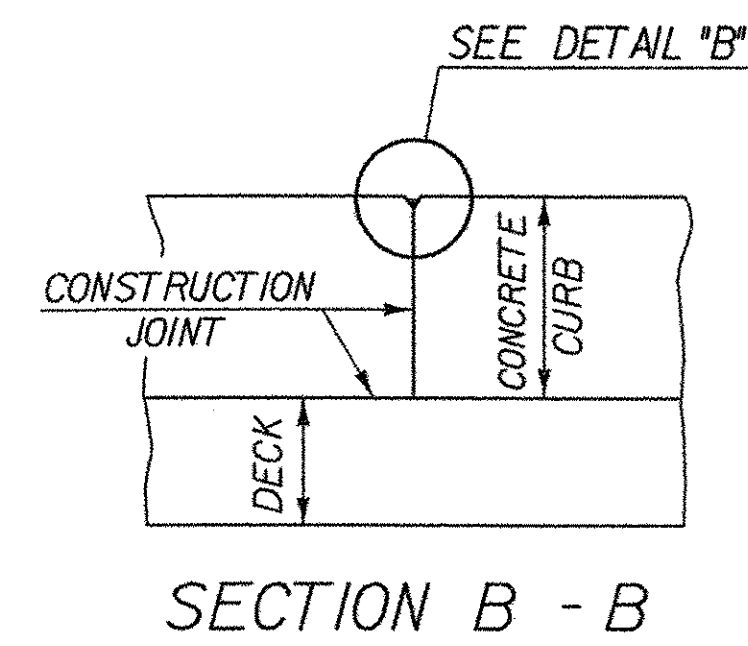
FLARED END DETAIL FOR 1'-3" CURB

CURB REINFORCING STIRRUP BARS SHALL BE TURNED AS REQUIRED TO FIT FLARED ENDS.

SCALE 1" = 1'-0"

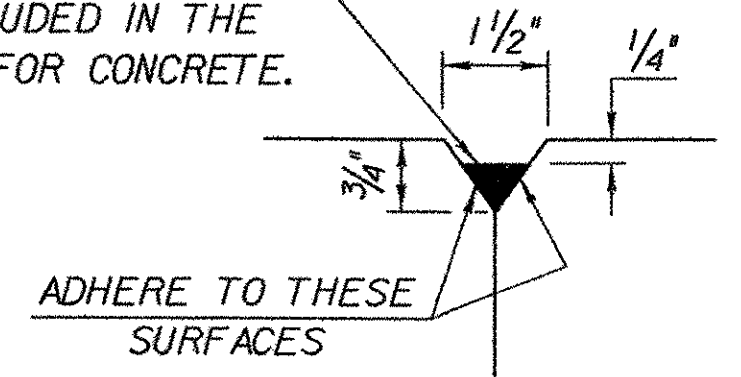


TYPICAL CONCRETE CONSTRUCTION JOINT

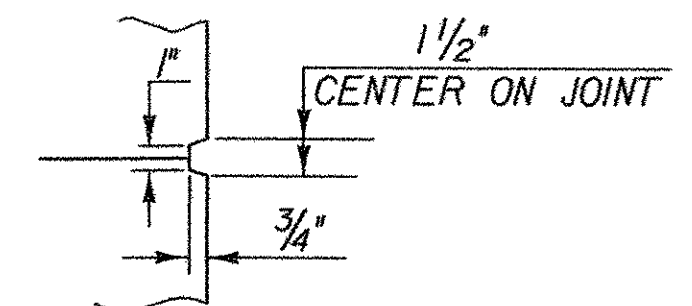


- NOTES:
1. CONSTRUCTION JOINTS THROUGH CONCRETE CURBS SHALL BE SPACED A MAXIMUM OF 15'-0" CENTER TO CENTER WITH A JOINT LOCATED AT THE C. OF THE PIER. CONSTRUCTION JOINTS (INCLUDING THE JOINT AT THE PIER) SHALL BE A MINIMUM OF 1'-6" FROM THE CENTER OF THE NEAREST BRIDGE RAIL POST. CONCRETE SHALL BE PLACED IN ALTERNATING SECTIONS WITH A MINIMUM OF 48 HOURS DELAY BETWEEN ADJACENT POURS.
 2. LONGITUDINAL REINFORCING SHALL PASS THROUGH CONCRETE CURB CONSTRUCTION JOINTS.

POLYURETHANE JOINT SEALER PER SUBSECTION 524.06C COLOR TO MATCH CONCRETE. COST TO BE INCLUDED IN THE UNIT PRICE BID FOR CONCRETE.



DETAIL "B"



SCORE MARK DETAIL

STATE OF VERMONT AGENCY OF TRANSPORTATION

Town Of	NORWICH	Bridge No.	46
Highway No.	T.H. 3	Log Sta.	
		Surv. Sta.	

TOWN HIGHWAY NO. 3 OVER OMPOMPANOOSUC RIVER

CONCRETE CURB DETAILS

Designed By	S. BURBANK	Drawn By	A. THIBAUT
Checked By	Date	Bridge Design Supervisor	Date
M. CHENETTE	12/03	M. CHENETTE	12/03

PROJECT	NORWICH	PROJECT NO.	TH2-9625
---------	---------	-------------	----------

DH CAD Filename:	...Norw-curbdetis.dgn	Plot Date:	03/31/2004
Bridge Sheet No.		Sheet	29 of 40