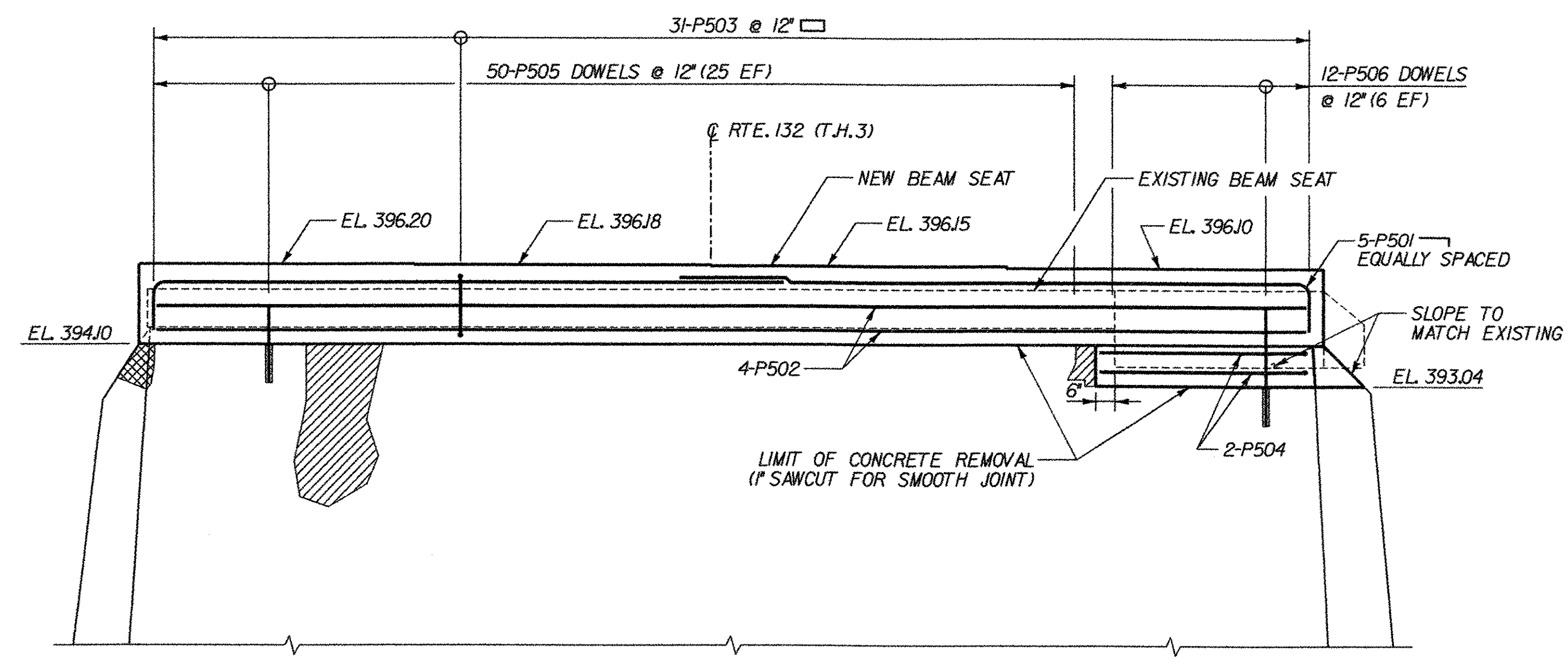


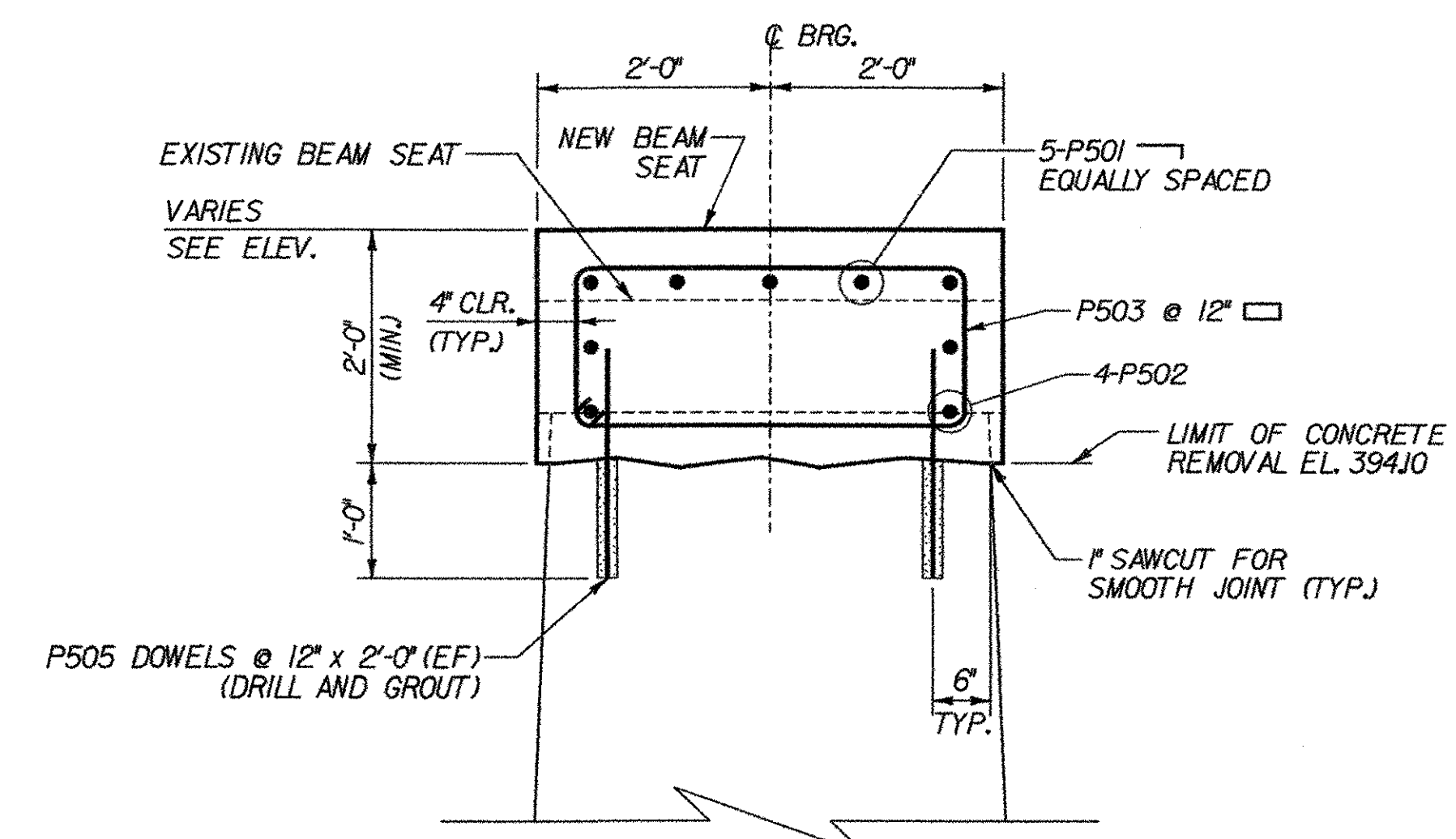
PLAN
SCALE 3/8" = 1'-0"
0 1 2 3 4



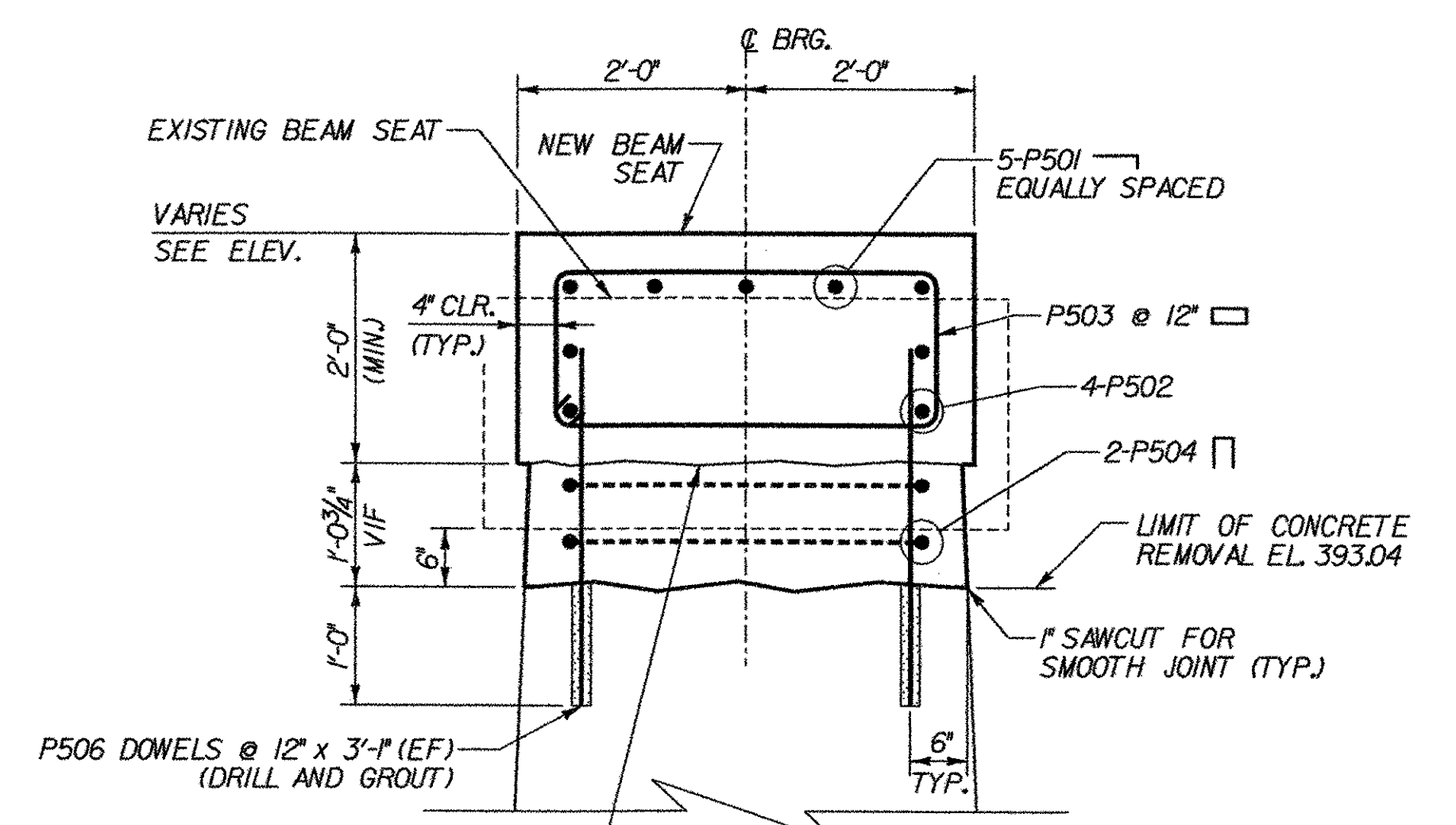
ELEVATION
SCALE 3/8" = 1'-0"
0 1 2 3 4

LEGEND FOR CONCRETE REPAIR

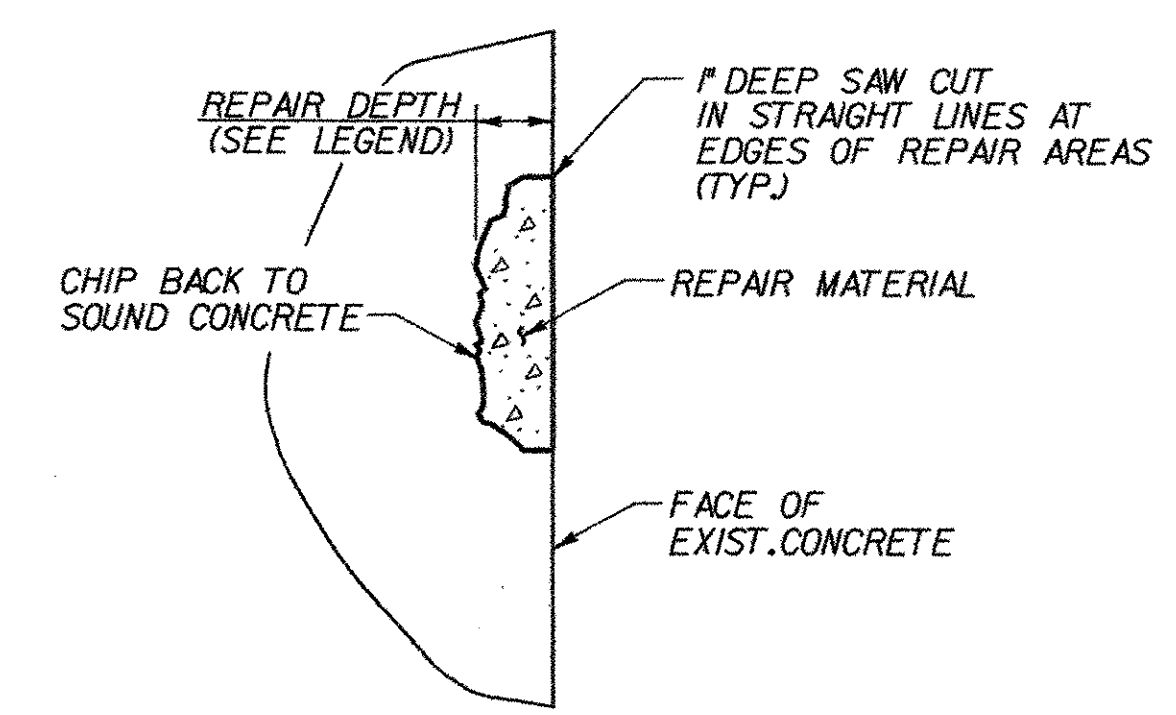
- APPROXIMATE LIMITS OF ITEM 580J3, REPAIR OF CONCRETE SUBSTRUCTURE SURFACE, CLASS I (MOD.) (MAX. REPAIR DEPTH OF 3")
- APPROXIMATE LIMITS OF ITEM 580J4, REPAIR OF CONCRETE SUBSTRUCTURE SURFACE, CLASS II (MOD.) (REPAIR DEPTH GREATER THAN 3", MAX. OF 6")



SECTION A-A
SCALE 3/4" = 1'-0"
0 1 2



SECTION B-B
SCALE 3/4" = 1'-0"
0 1 2



REFER TO SUPPLEMENTAL SPECIFICATION SECTION 580
"STRUCTURAL CONCRETE REPAIR" FOR SURFACE
PREPARATION AND REPAIR MATERIAL REQUIREMENTS.

DETAIL CONCRETE REPAIR
NTS

NOTES:

1. EXISTING VERTICAL REINFORCING IN THE PIER TO BE RETAINED IF POSSIBLE. ANY RETAINED REINFORCING SHALL BE BLAST CLEANED PER SUPPLEMENTAL SPECIFICATION 580.
2. AREAS OF CONCRETE SURFACE REPAIR ON EXISTING ABUTMENT TO BE DETERMINED IN THE FIELD BY THE ENGINEER AND PAID FOR UNDER ITEM 580J3 (MOD.) AND ITEM 580J4 (MOD.). SEE SHT. 28 FOR ADDITIONAL INFORMATION.

NOTE:

- VIF - VERIFY IN FIELD
- NF - NEAR FACE
- FF - FAR FACE
- EF - EACH FACE
- ▲ - CUT TO FIT IN FIELD
- 3" CLR. FOR NEW REINFORCING UNLESS OTHERWISE SPECIFIED ON THE PLANS.

STATE OF VERMONT AGENCY OF TRANSPORTATION			
Town Of	NORWICH	Bridge No.	46
Highway No.	T.H. 3	Log Sta.	
TOWN HIGHWAY NO. 3 OVER OMPOMPANOOSUC RIVER			
PIER DETAILS			
Designed By	S. BURBANK	Drawn By	A. THIBAUT
Checked By	M. CHENETTE	Date	12/03
		Bridge Design Supervisor	M. CHENETTE Date 12/03
PROJECT	NORWICH	PROJECT NO.	TH2-9625
DH CAD Filename: ...Norw-plier.dgn		Plot Date: 03/31/2004	
Bridge Sheet No.		Sheet 28 of 40	

