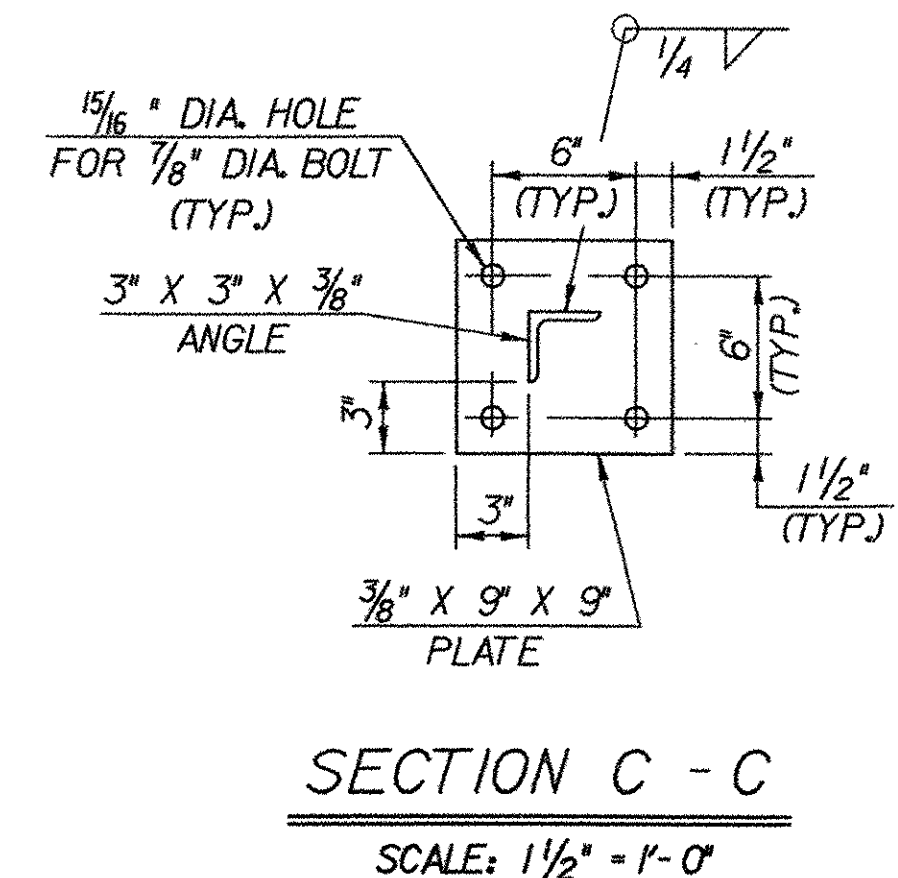
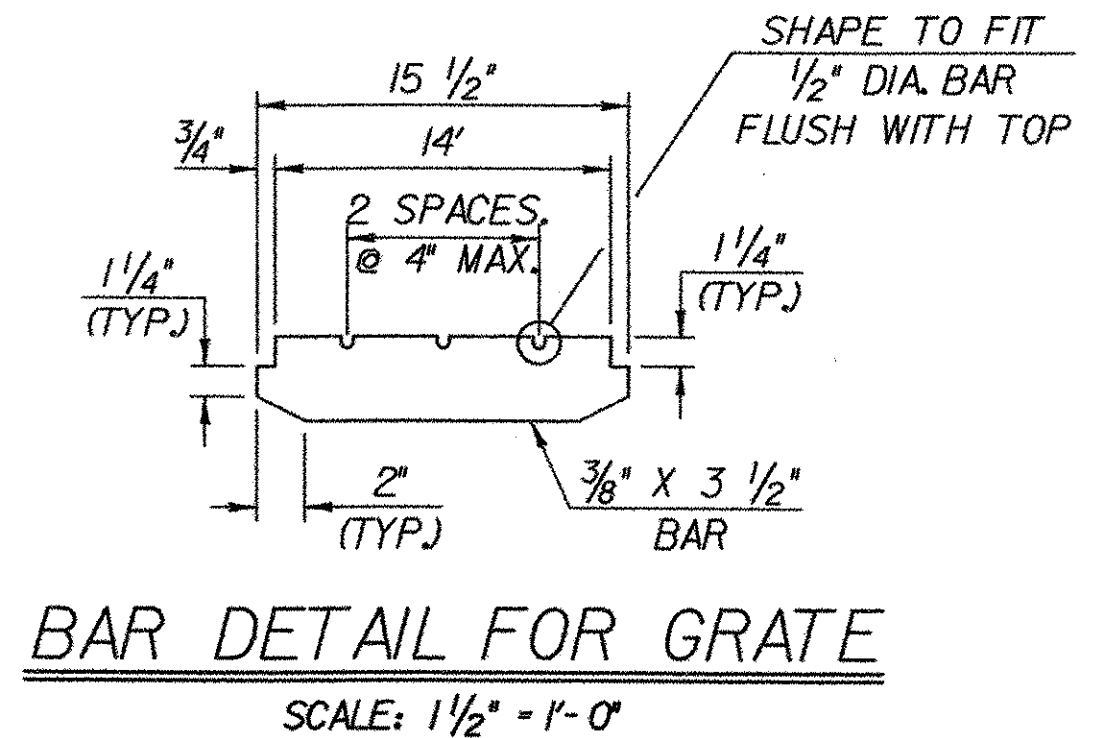


SCUPPER LOCATION
STA. 7+46 LT.
STA. 7+67 LT.
(SEE PLAN & ELEVATION SHEET 15J)



NOTES

- THE FOLLOWING NOTES APPLY TO ALL SCUPPERS UNLESS OTHERWISE DETAILED ON PROJECT PLANS.
- HOLLOW STRUCTURAL STEEL TUBING SHALL CONFORM TO ASTM A-500 GR. B OR A-501.
 - ALL PLATES, BARS, AND ANGLES SHALL CONFORM TO AASHTO M 270 GR. 36.
 - ALL SCUPPERS SHALL BE GALVANIZED IN ACCORDANCE WITH AASHTO M 111 AFTER FABRICATION.
 - THE TOP SURFACE OF SCUPPER SHALL BE SLOPED TO MATCH ROADWAY SLOPE AND GRADE.
 - THE BAR AND GRATE SECTION MAY BE PREFABRICATED PROVIDING THE GEOMETRY AND SECTION PROPERTIES ARE EQUIVALENT TO THE DETAILS SHOWN.
 - SCUPPERS SHALL BE PAID FOR UNDER ITEM 506.50 "STRUCTURAL STEEL (ROLLED BEAM)".

STATE OF VERMONT AGENCY OF TRANSPORTATION			
Town Of	NORWICH	Bridge No. 46	
Highway No.	T.H. 3	Log Sta. Surv. Sta.	
TOWN HIGHWAY NO. 3 OVER OMPOMPANOOSUC RIVER			
SCUPPER DETAILS			
Designed By	S. BURBANK	Drawn By	A. THIBAUT
Checked By	M. CHENETTE	Date	12/03
		Bridge Design Supervisor	M. CHENETTE Date 12/03
PROJECT	NORWICH	PROJECT NO.	TH2-9625
DH CAD Filename: ...Norw-scupper.dgn		Plot Date: 03/31/2004	
Bridge Sheet No.		Sheet 24 of 40	

