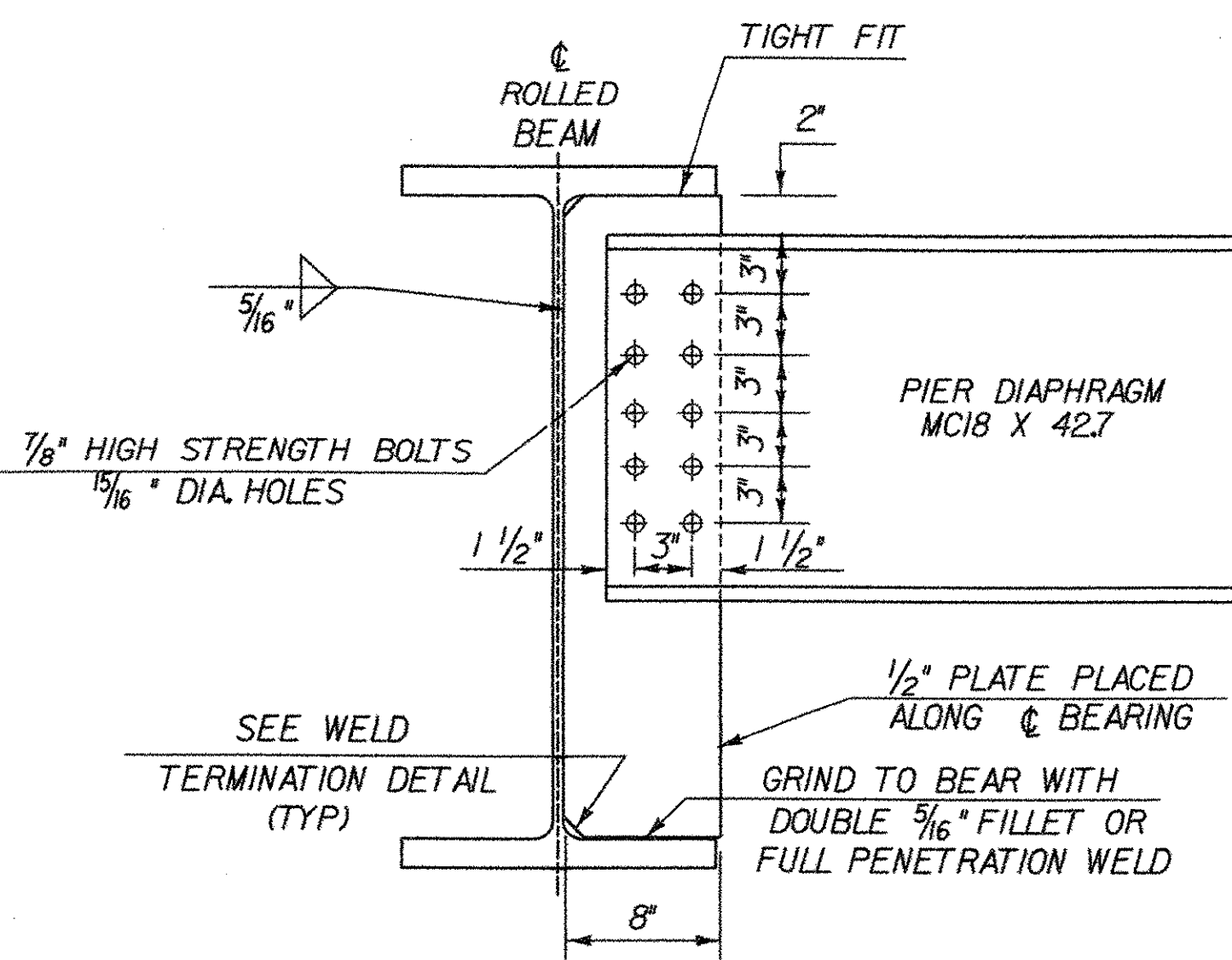
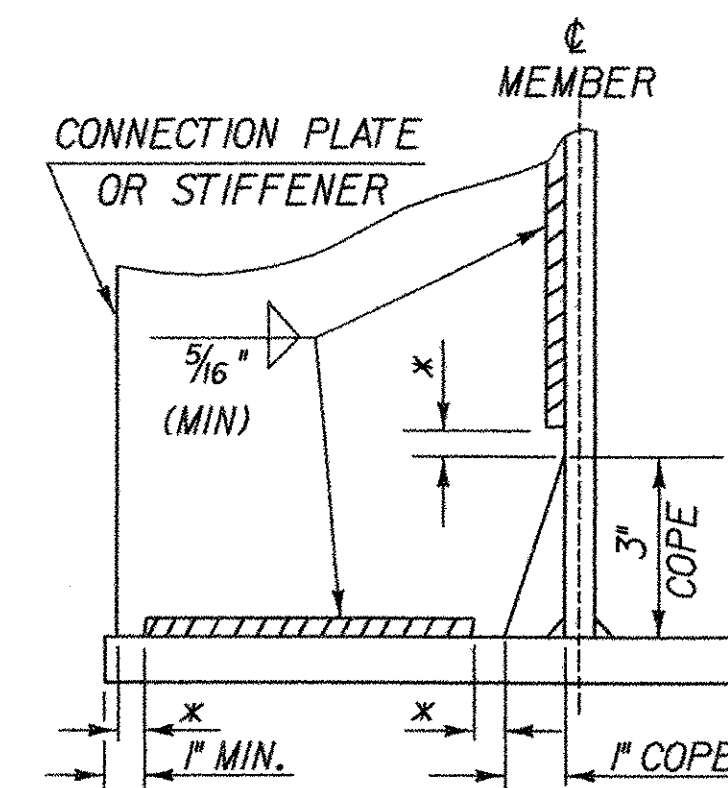


NOTE: HI-STRENGTH BOLTS, NUTS AND WASHERS SHALL CONFORM TO AASHTO DESIGNATION M164.

INTERMEDIATE DIAPHRAGMS

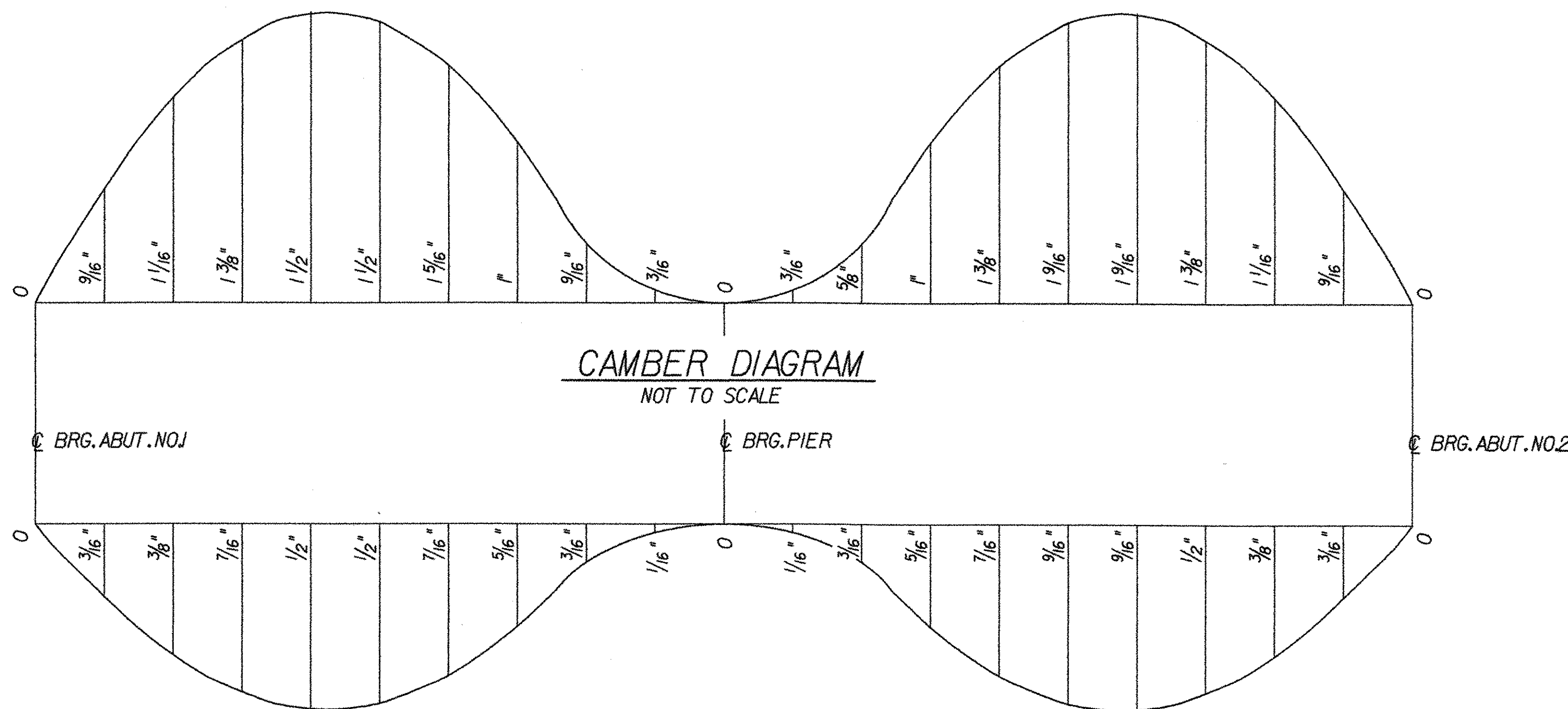


PIER DIAPHRAGMS

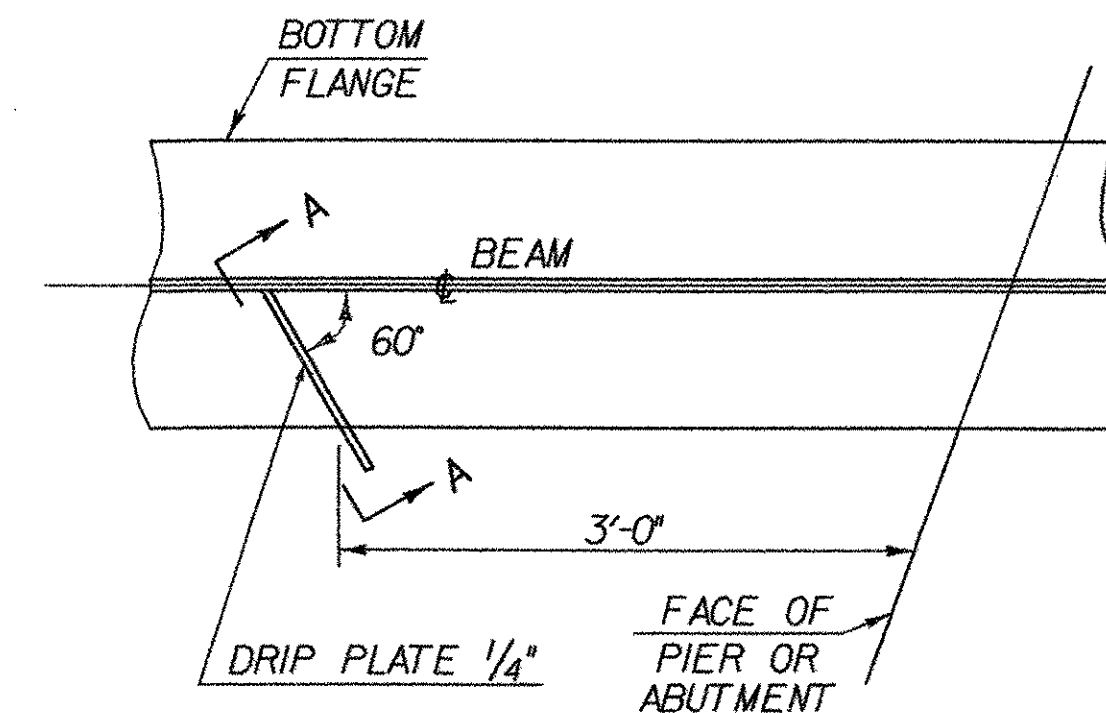


* NO WELD FOR 1/4" MIN. 1/2" MAX. (EXCEPT MUST MAINTAIN 1" MINIMUM FROM EDGE OF FLANGE)

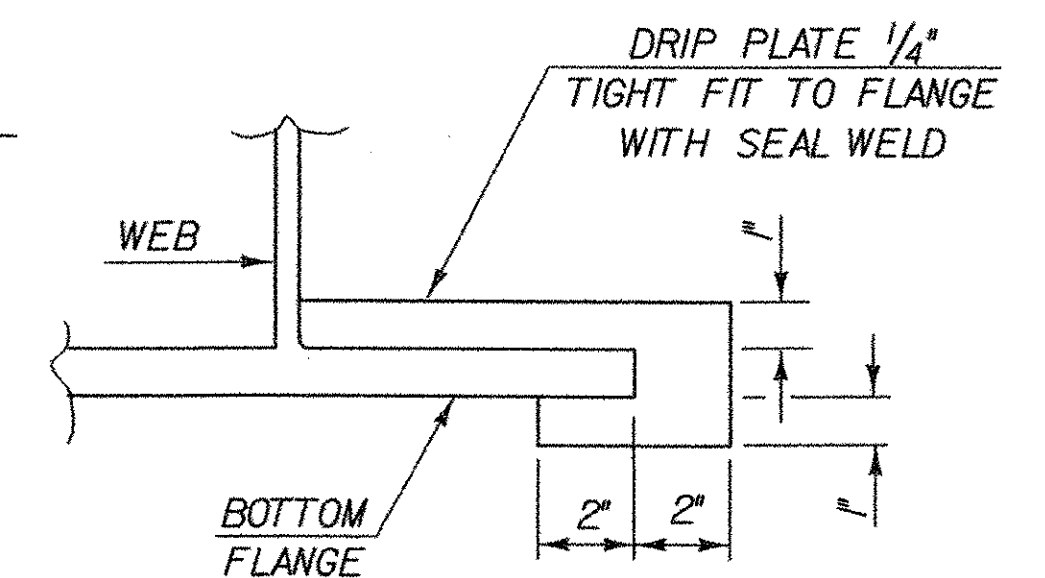
WELD TERMINATION AND COPING DETAILS FOR STEEL MEMBERS



NOTES:
 1. CAMBER AND DEAD LOAD MEASUREMENTS ARE GIVEN IN INCHES AT SPAN TENTH POINTS.
 2. DEAD LOAD DEFLECTIONS SHOWN ARE FOR ALL DEAD LOADS AND SUPERIMPOSED DEAD LOADS INCLUDING BEAM AND DIAPHRAGM WEIGHTS.



PLAN DRIP PLATE



SECTION A - A

NOTE: DRIP PLATES SHALL BE PLACED ON OUTSIDE EDGE OF FASCIA BEAMS ON THE HIGH SIDE OF ALL PIERS AND ABUTMENTS OR AS INDICATED ON PROJECT PLANS.

**STATE OF VERMONT
 AGENCY OF TRANSPORTATION**

Town Of	NORWICH	Bridge No.	46
Highway No.	T.H. 3	Log Sta.	
		Surv. Sta.	

TOWN HIGHWAY NO. 3 OVER OMPOMPANOOSUC RIVER

MISCELLANEOUS STEEL DETAILS

Designed By	S. BURBANK	Drawn By	A. THIBAUT
Checked By	Date	Bridge Design Supervisor	
M. CHENETTE	12/03	M. CHENETTE	Date 12/03

PROJECT	NORWICH	PROJECT NO.	TH2-9625
---------	---------	-------------	----------

DH CAD Filename:	...Norw-steeldets.dgn	Plot Date:	03/31/2004
Bridge Sheet No.		Sheet	21 of 40

