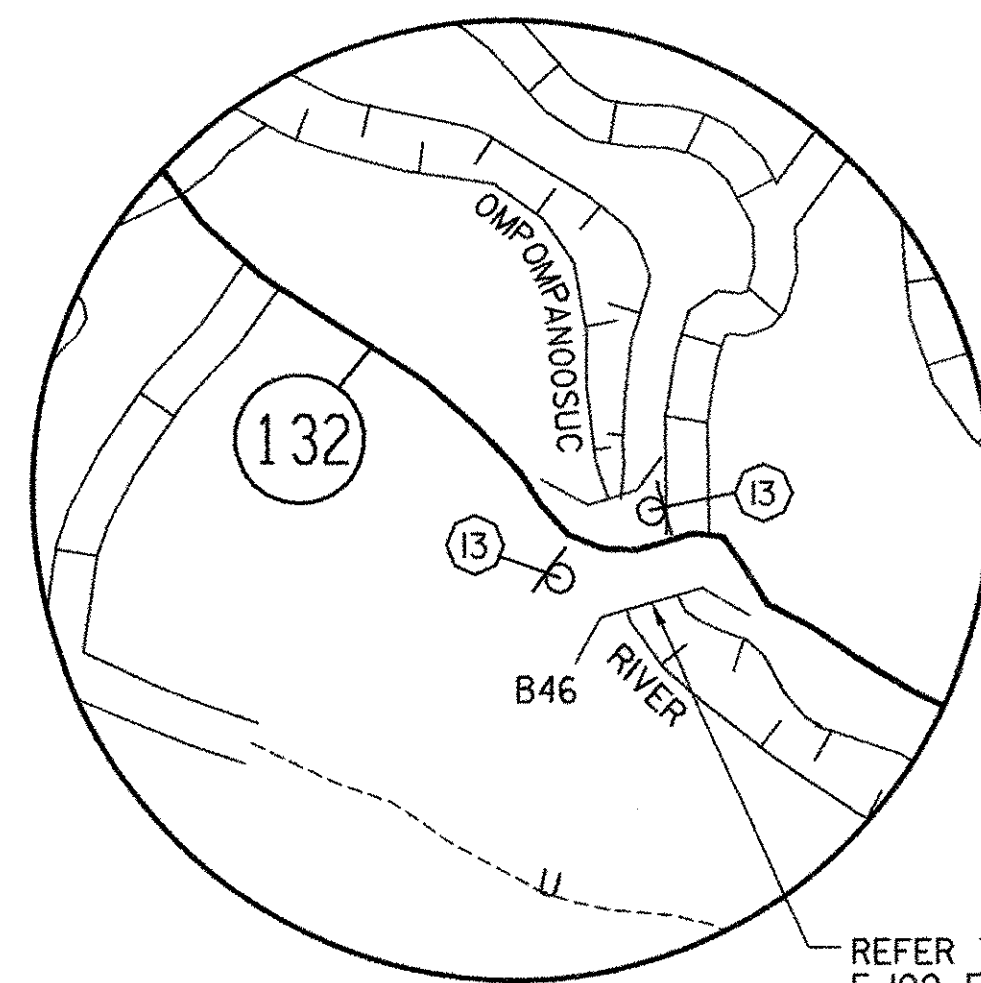
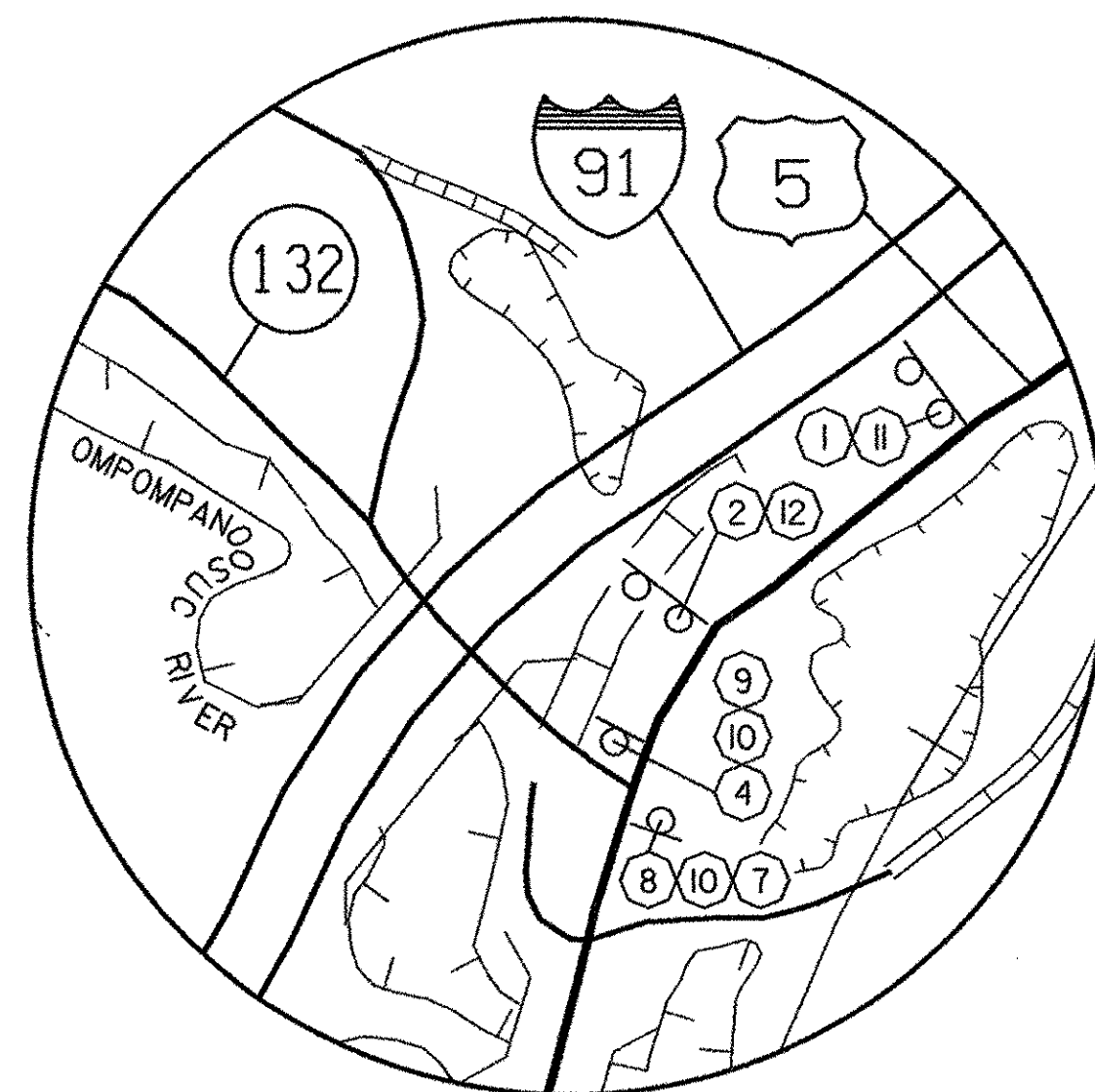


DETAIL A

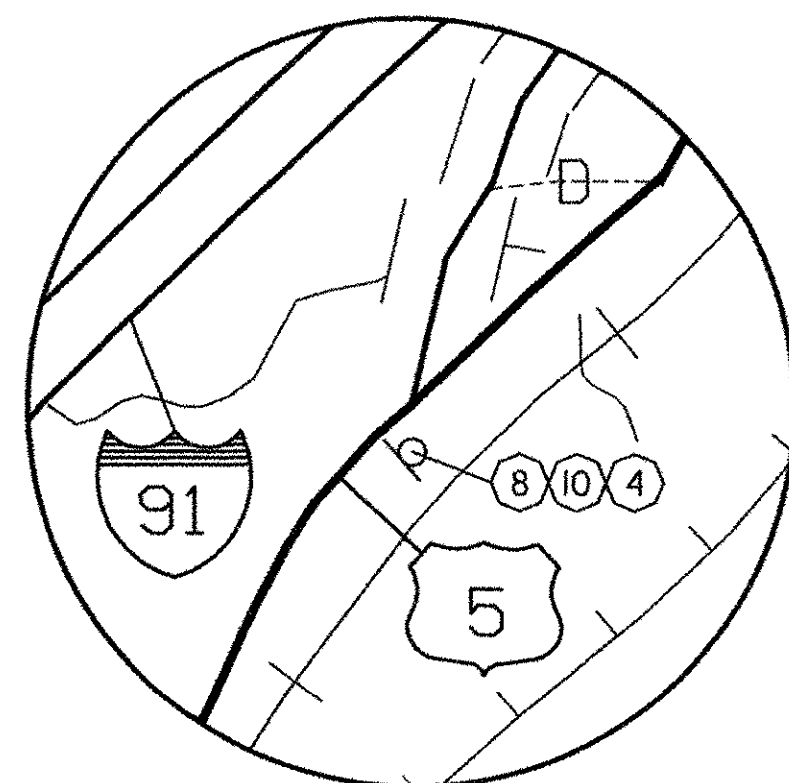


DETAIL B

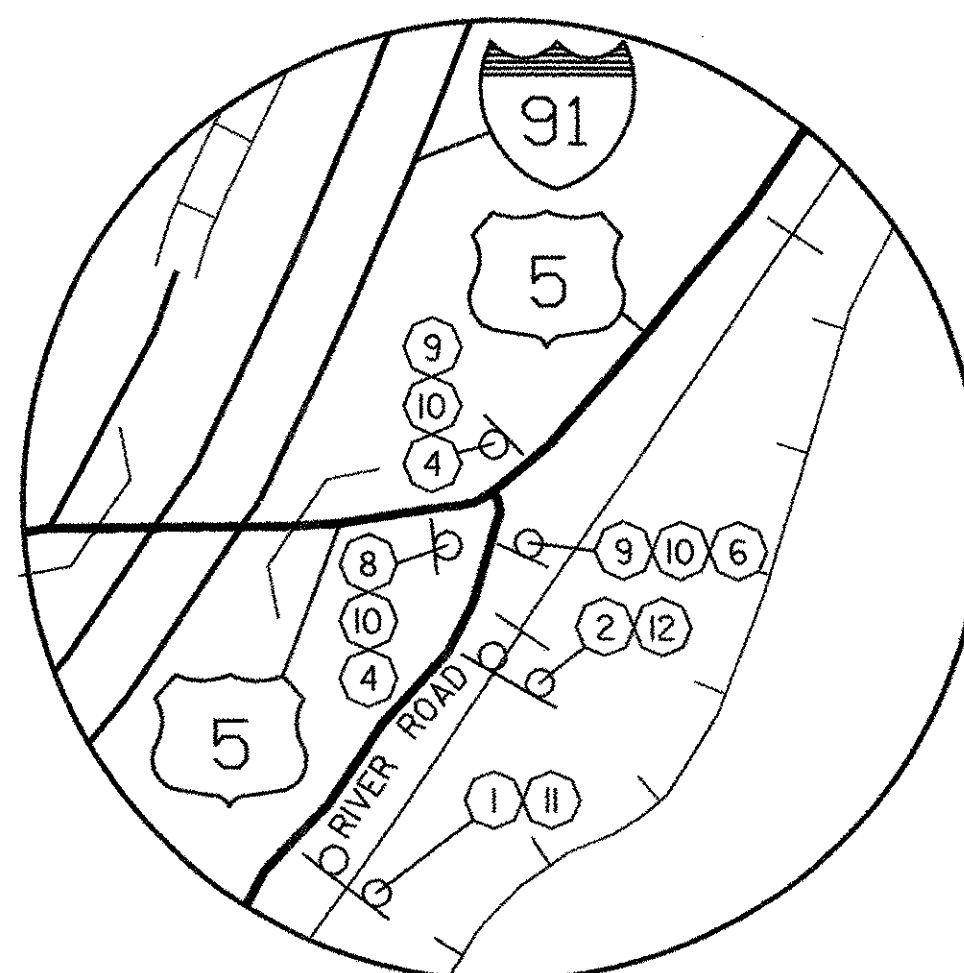
REFER TO VAOT STANDARD E-100 FOR CONSTRUCTION APPROACH SIGNING AT BRIDGE #46



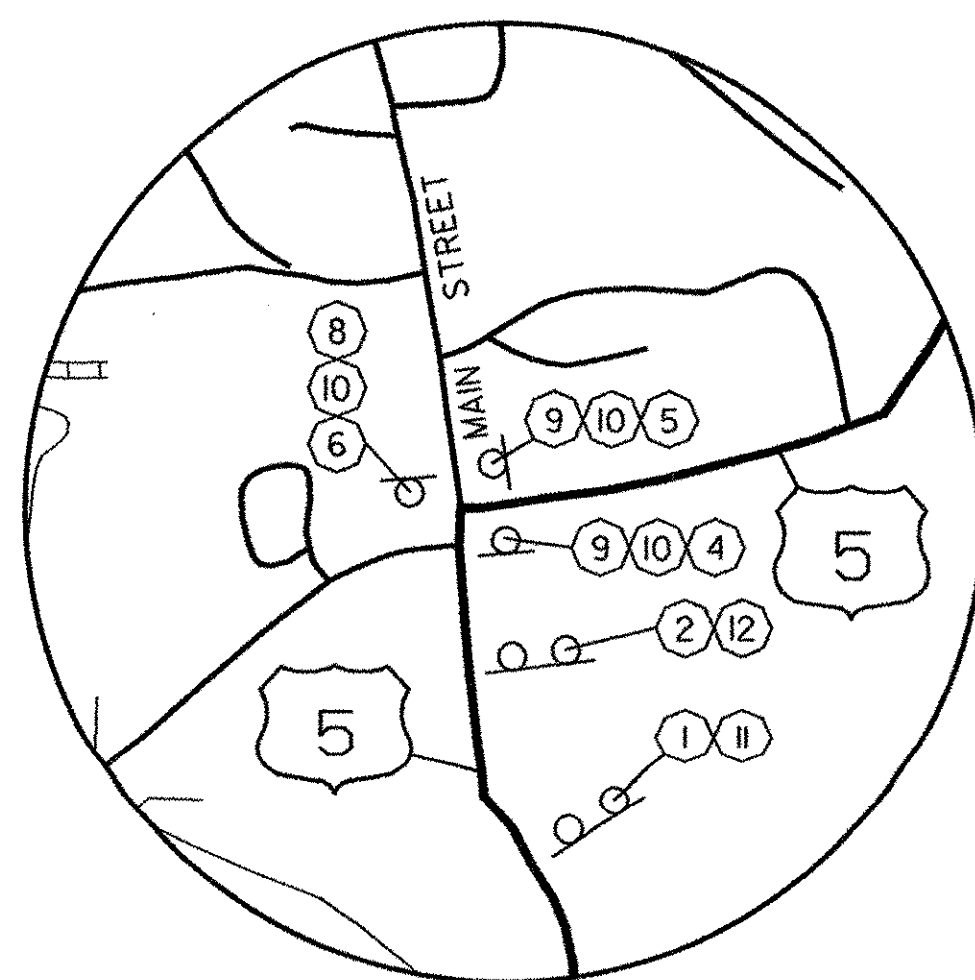
DETAIL C



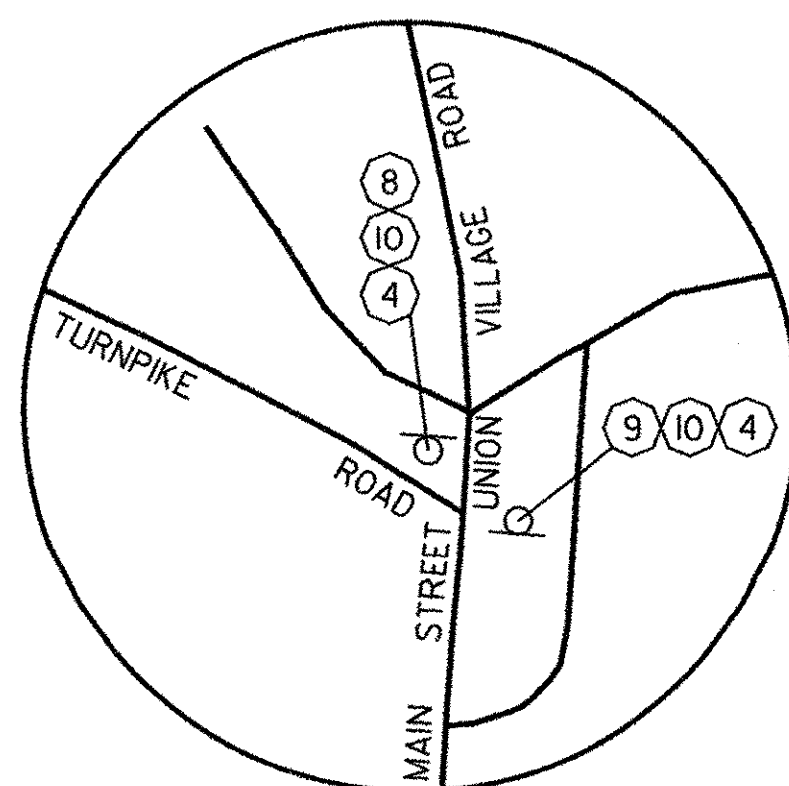
DETAIL D



DETAIL E



DETAIL F



DETAIL G

NOTES:

1. ALL COSTS OF INSTALLING, MAINTAINING, AND REMOVING THE SIGNS AND BARRICADES IN THIS TRAFFIC CONTROL PLAN AS NECESSARY TO MEET PROJECT CONDITIONS WILL BE SUBSIDIARY TO ITEM 64.10, "TRAFFIC CONTROL".
2. ALL TRAFFIC SIGNS SHALL CONFORM TO THE MANUAL OF UNIFORM TRAFFIC CONTROL DEVICES (MUTCD) 2003 EDITION.
3. "BRIDGE CLOSED" SIGNS SHALL BE MOUNTED AND MAINTAINED ON LIGHTED TYPE III BARRICADES.
4. TYPE III CONSTRUCTION BARRICADES SHALL BE PLACED SO AS TO PHYSICALLY EXCLUDE TRAFFIC FROM THE ENTIRE ROADWAY WIDTH OR AT THE DISCRETION OF THE ENGINEER.
5. ALL ORANGE SIGNS SHALL BE FABRICATED USING REFLECTORIZED FLUORESCENT ORANGE COLORED ASTM TYPE III SHEETING.
6. USE TYPE A SIGN WITH BACKGROUND PER NOTE 5 AND NON-REFLECTIVE BLACK LETTERING.
7. THE "DETOUR AHEAD" SIGN SHALL BE ERECTED 1000 FT. PRIOR TO THE "DETOUR 500 FT" SIGN.
8. THE "ROUTE 5 TRAFFIC NOT AFFECTED" SIGN SHALL BE ERECTED DIRECTLY BELOW THE "DETOUR AHEAD" SIGN.
9. THE "BRIDGE CLOSED AHEAD" SIGN AND THE "BRIDGE CLOSED ON VT 132 USE DETOUR" SIGN SHALL BE ERECTED DIRECTLY BELOW THE "DETOUR 500 FT" SIGN.
10. THE ROUTE "132" SIGN SHALL BE ERECTED DIRECTLY BELOW THE "EAST" OR "WEST" SIGNS.
11. THE DETOUR (M4-9V, M4-9L&R AND M4-8a) SIGNS SHALL BE ERECTED DIRECTLY BELOW THE ROUTE "132" SIGN.

PLAN REF. SYMBOL	ID NUMBER	SIGN TEXT	SIZE OF SIGN		NUMBER OF SIGNS REQ'D.	POST SIZE AND NUMBER REQ'D., EACH SIGN	AREA OF EACH SIGN (SQ. FT.)	REMARKS
			WIDTH	HEIGHT				
①	W20-2		48"	48"	4	TWO 3 LBS./FT FLANGED CHANNEL STEEL POSTS.	16.00	SEE NOTE 7
②	W20-2		48"	48"	4	TWO 3 LBS./FT FLANGED CHANNEL STEEL POSTS.	16.00	
③	VC-821		36"	36"	1	N/A	9.00	SEE NOTE 9
④	M4-9V		30"	24"	8	N/A	5.00	SEE NOTE II
⑤	M4-9R		30"	24"	1	N/A	5.00	SEE NOTE II
⑥	M4-9L		30"	24"	2	N/A	5.00	SEE NOTE II
⑦	M4-8a		24"	18"	2	N/A	3.00	SEE NOTE II
⑧	M3-2		24"	12"	6	SINGLE - 3 LB/FT FLANGED CHANNEL STEEL POST.	2.00	
⑨	R11-2C		24"	12"	7	SINGLE - 3 LB/FT FLANGED CHANNEL STEEL POST.	2.00	
⑩	---		30"	24"	13	N/A	5.00	SEE NOTE 10
⑪	---		36"	24"	3	N/A	6.00	SEE NOTE 8
⑫	---		60"	30"	3	N/A	12.50	SEE NOTE 9
⑬	R11-2C		48"	30"	2	N/A	10.00	SEE NOTES 3 AND 4



PROJECT NAME: NORWICH BRIDGE #46
PROJECT NUMBER: TH2-9625

FILE NAME: ...Norw-trafficdet.dgn
PROJECT LEADER: M. CHENETTE
DESIGNED BY: S. BURBANK
TRAFFIC CONTROL DETAILS

PLOT DATE: 03/31/2004
DRAWN BY: S. BURBANK
CHECKED BY: M. CHENETTE
SHEET 10 OF 40