

GPS CONTROL POINTS

# HVCTRL # 1

STANDARD DISK STAMPED  
 OMPA AZ MK  
 N = 457696.9720  
 E = 1709707.3280  
 ELEV. = 459.940

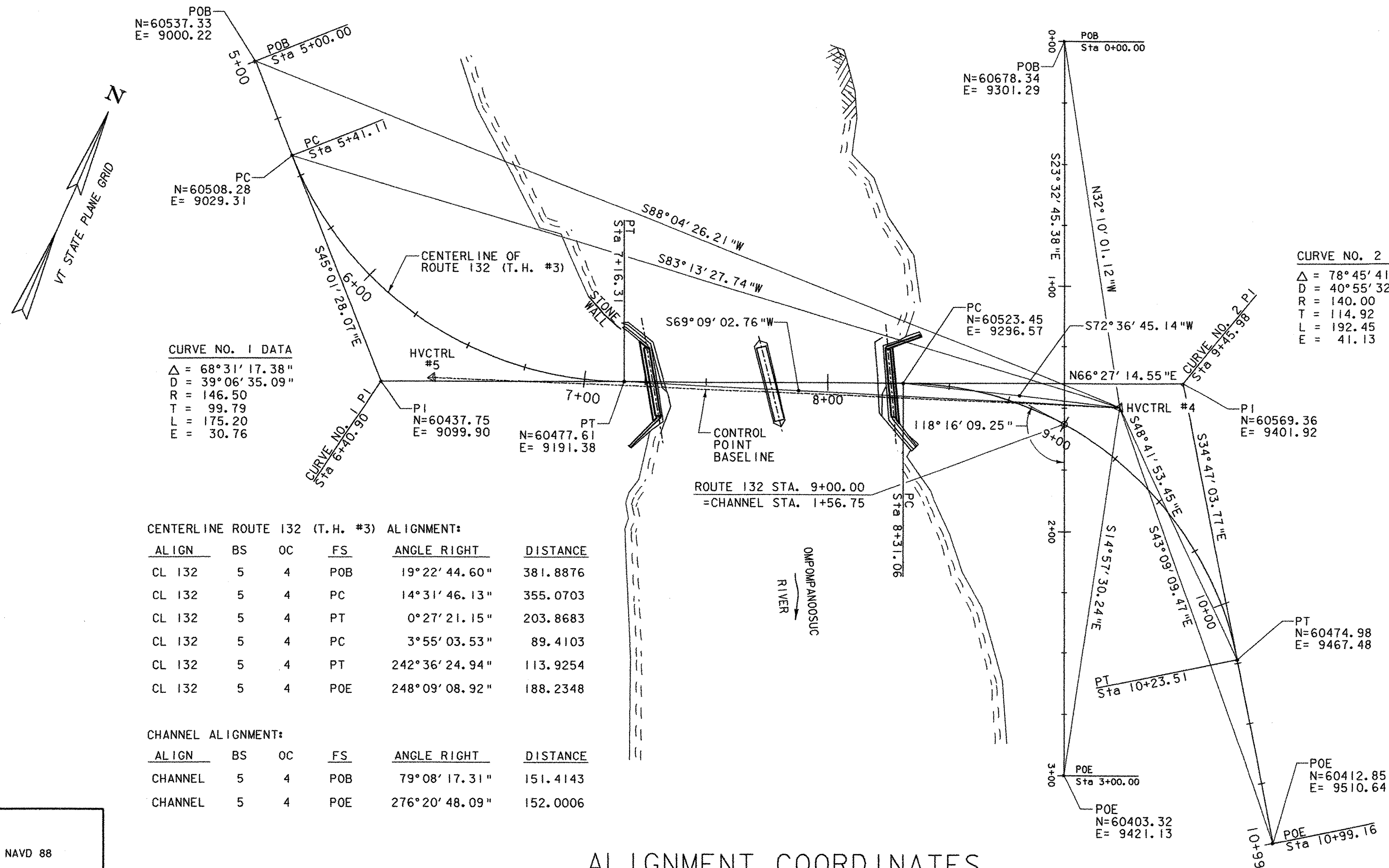
GENERAL LOCATION - NORWICH, VT  
 TO REACH FROM THE INTERSECTION OF THE VERMONT ROUTE 113 BRIDGE OVER INTERSTATE 91 IN THETFORD GO SOUTH ALONG INTERSTATE 91 FOR 4.5 MI (7.2 KM) TO THE MARK ON THE RIGHT SET FLUSH IN THE TOP OF A CONCRETE DROP INLET.  
 THE MARK IS LOCATED 34.5 M (113.2 FT) NORTHEAST OF MM 79/80, 24.2 M (79.4 FT) WEST SOUTHWEST OF MM 79/85, 3.8 M (12.5 FT) NORTHWEST OF AND ABOUT 0.5 M (1.6 FT) LOWER THAN THE NORTHWEST EDGE OF PAVEMENT OF THE INTERSTATE 91 SOUTHBOUND LANE, AND 0.3 M (1.0 FT) SOUTHEAST OF A FIBERGLASS WITNESS POST.

# HVCTRL # 2

STANDARD DISK STAMPED  
 OMPA  
 N = 459617.8370  
 E = 1711293.0930  
 ELEV. = 418.077

GENERAL LOCATION - NORWICH, VT  
 TO REACH FROM THE INTERSECTION OF THE VERMONT ROUTE 113 BRIDGE OVER INTERSTATE 91 IN THETFORD GO SOUTH ALONG INTERSTATE 91 FOR 4.0 MI (6.4 KM) TO THE MARK ON THE LEFT SET NEAR THE SOUTH END OF A U-TURN.  
 THE MARK IS LOCATED 7.2 M (23.6 FT) SOUTH SOUTHEAST OF THE SOUTHEAST EDGE OF PAVEMENT OF INTERSTATE 91 SOUTHBOUND LANE, 5.2 M (17.1 FT) NORTH NORTHWEST OF THE NORTHWEST EDGE OF PAVEMENT OF THE INTERSTATE 91 NORTHBOUND LANE, 2.4 M (7.9 FT) WEST SOUTHWEST OF THE SOUTHWEST EDGE OF PAVED U-TURN, AND 3.3 M (10.8 FT) NORTH OF A NO U-TURN SIGN AND FIBERGLASS WITNESS POST AND SET 0.1 M (0.3 FT) BELOW GROUND SURFACE.

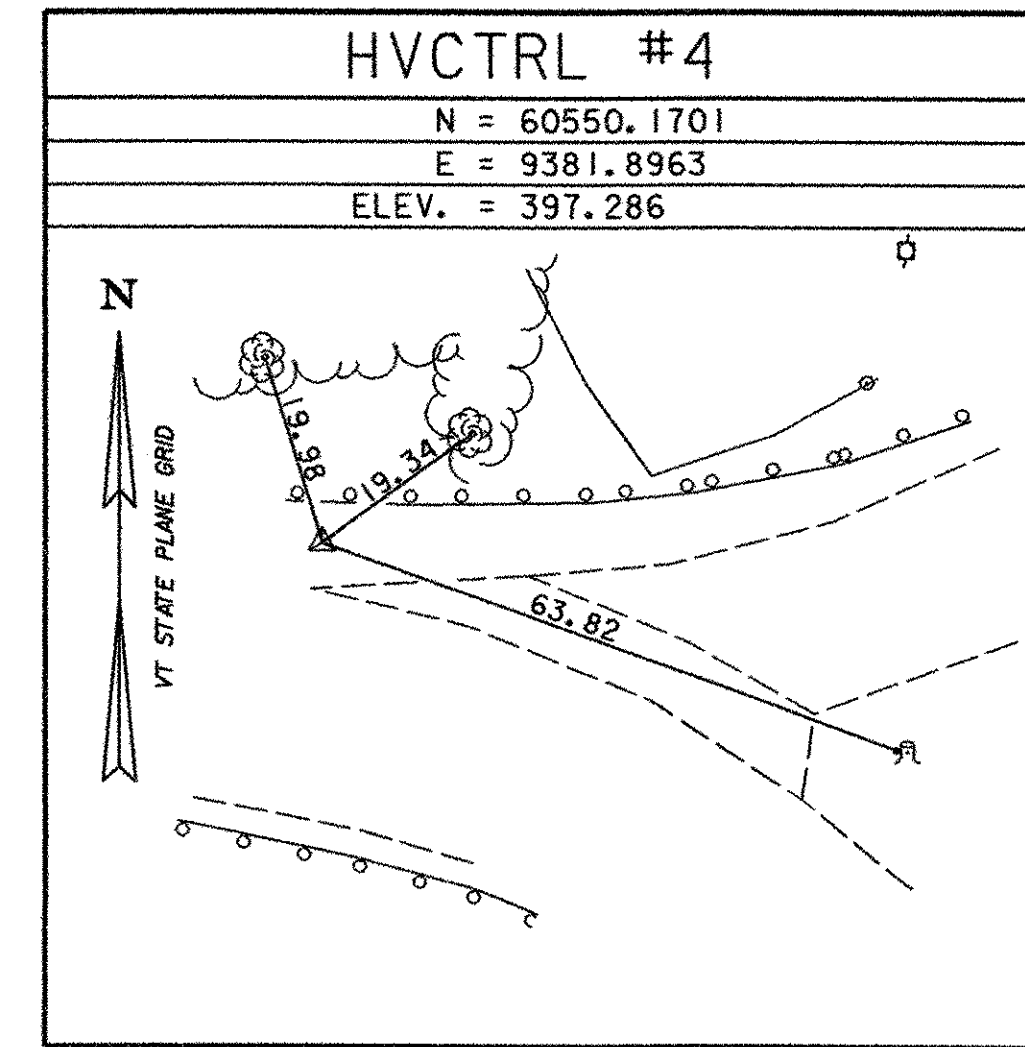
• TO ALLOW THE STATE PLANE COORDINATES TO FIT THE AGENCY DESIGN PLANE, SUBTRACT 400,000 FROM THE NORTHING AND SUBTRACT 1,700,000 FROM THE EASTING.  
 • DESCRIPTION PROVIDED BY VREOMONT AGENCY OF TRANSPORTATION GEODETIC SURVEY UNIT



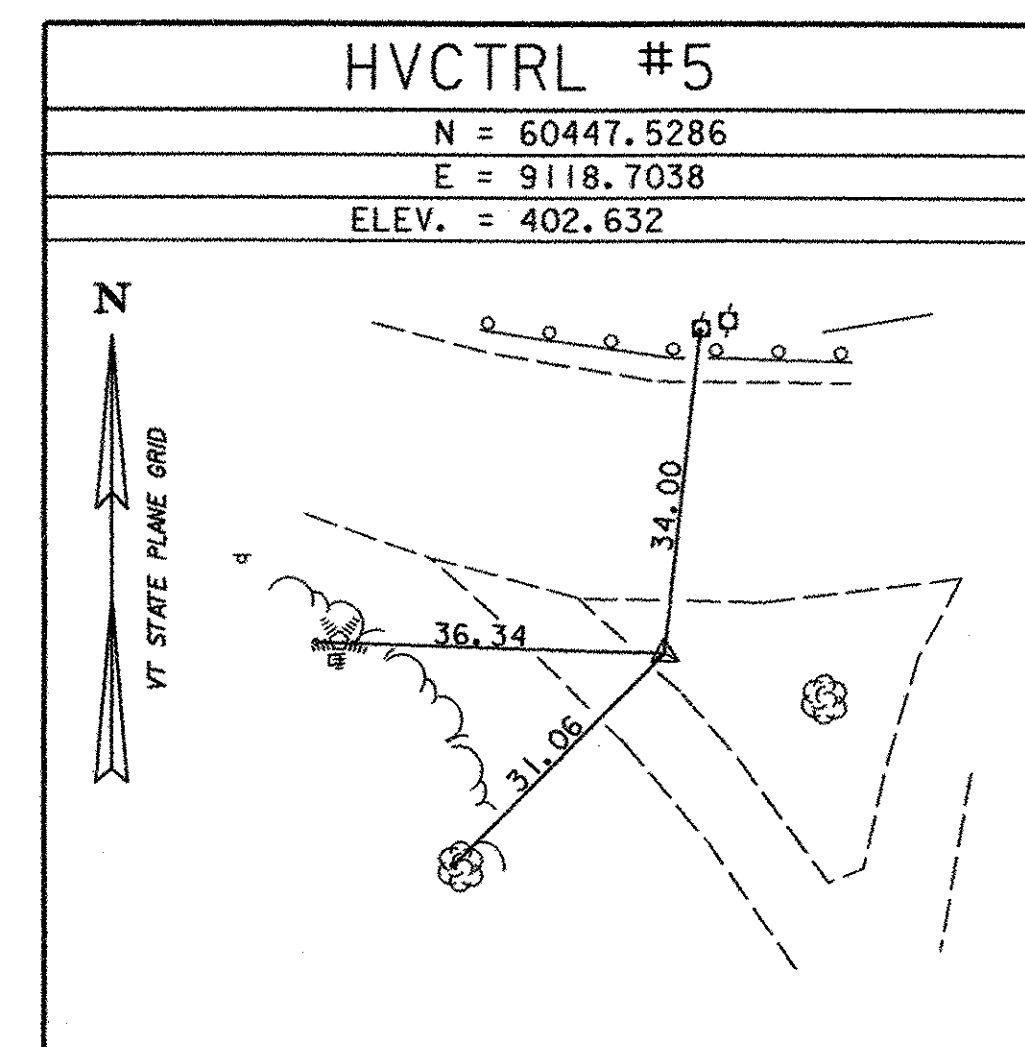
## ALIGNMENT COORDINATES

DATUM	
VERTICAL	NAVD 88
HORIZONTAL	NAD 83/96
ADJUSTMENT	none

TRAVERSE TIE



TRAVERSE TIE



PROJECT NAME: NORWICH  
 PROJECT NUMBER: TH2-9625  
 FILE NAME: ...Norw-tie.dgn  
 PROJECT LEADER: M. CHENETTE  
 DESIGNED BY: VTrans  
**TIE SHEET**

PLOT DATE: 03/31/2004  
 DRAWN BY: R. BULLOCK (VTrans)  
 CHECKED BY: M. CHENETTE  
 SHEET 6 OF 40