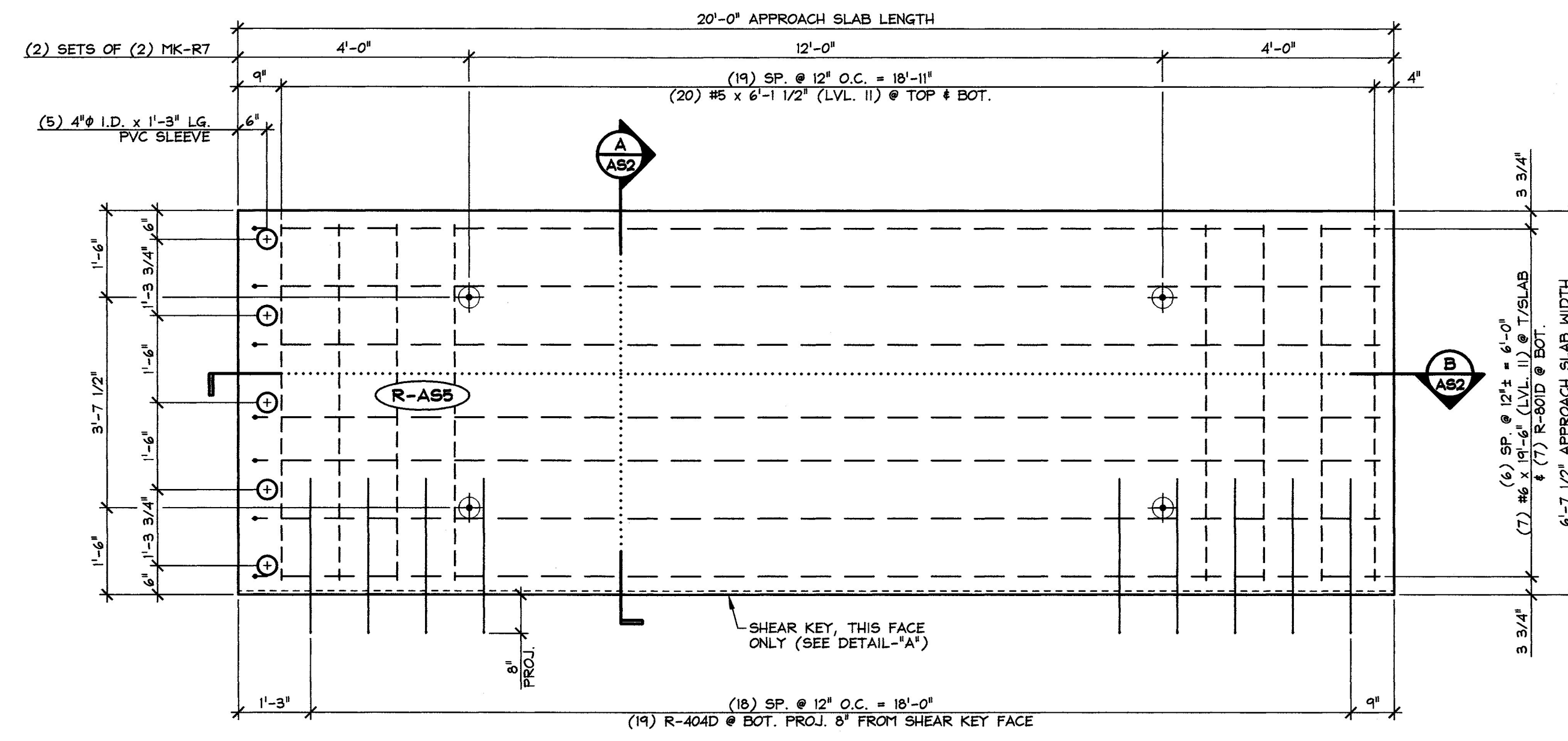
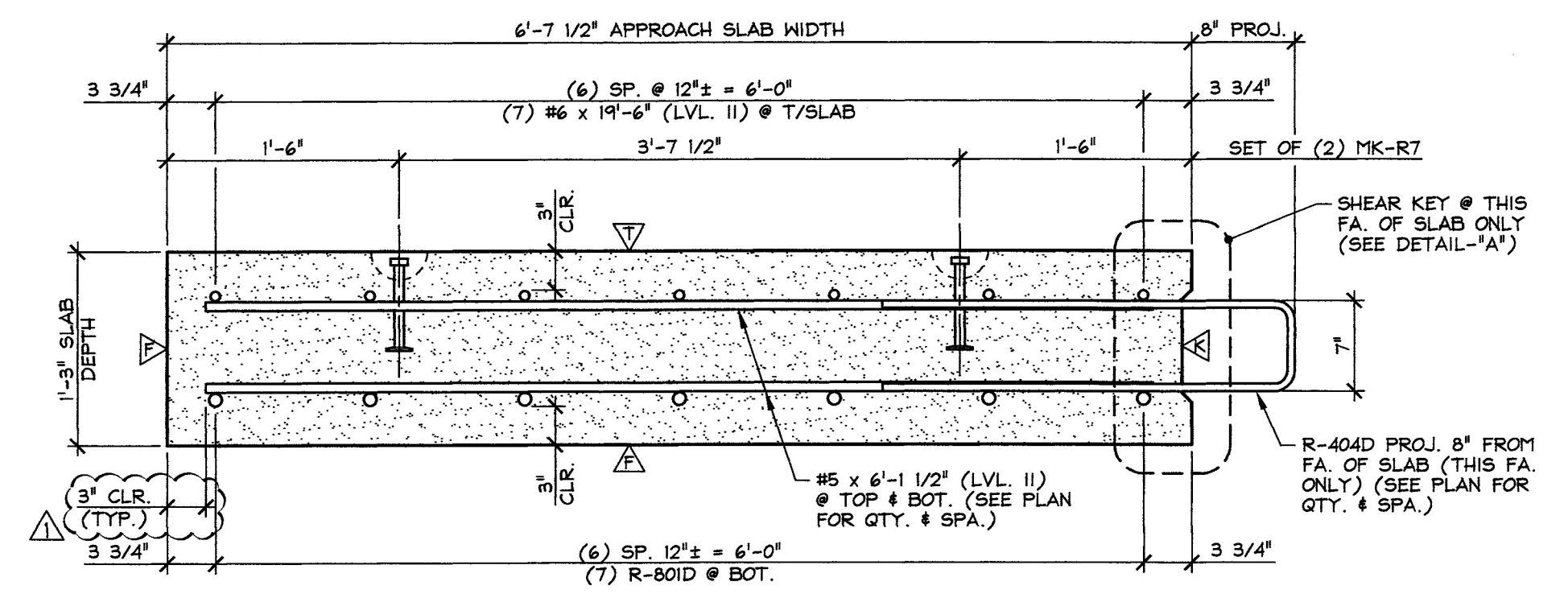


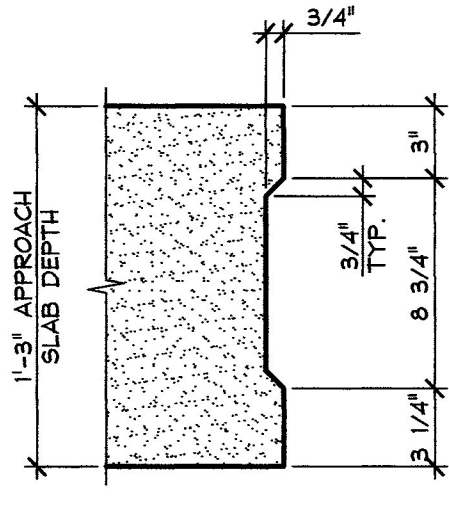
1 APPROACH SLAB PLAN VIEW IN FORM
AS2 1/2" = 1'-0"



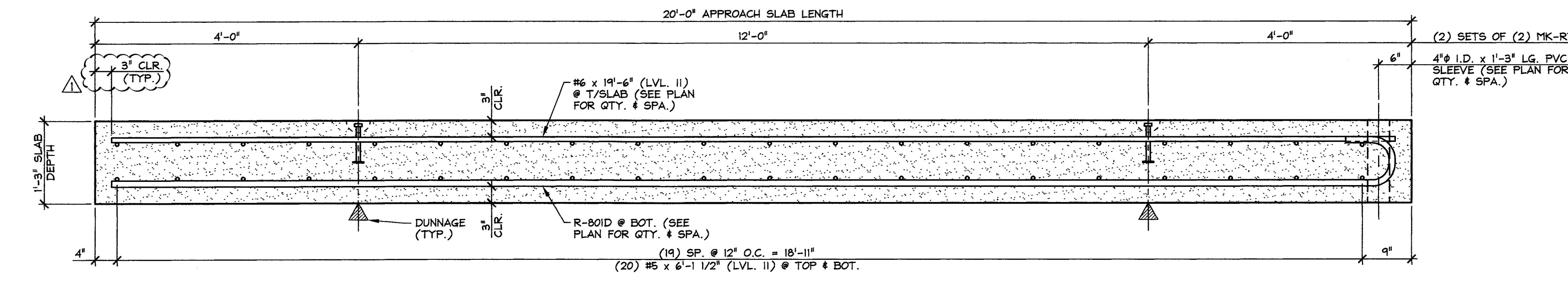
2 APPROACH SLAB PLAN VIEW IN FORM
AS2 1/2" = 1'-0"



A TRANSVERSE SECTION
AS2 1" = 1'-0"



DETAIL - "A"
1 1/2" = 1'-0"



B LONGITUDINAL SECTION
AS2 3/4" = 1'-0"

Vermont Agency of Transportation
RECEIVED

CK'D BY M. Umberger OK'D BY C. Carlson

July 1, 2014

RESUBMIT No Approved
BY C. Carlson DATE 07/08/2014

MARK: R-AS6	QTY.: 1	WT.: 12.4 T	VOL.: 6.1 cy
MARK: R-AS5	QTY.: 1	WT.: 12.4 T	VOL.: 6.1 cy

MATERIAL LIST / APPROACH SLAB				
ITEM	MARK	DESCRIPTION	QTY./SLAB	
			R-AS6	R-AS5
1	R-404D	#4 BENT BAR (LEVEL II, DUAL COATED)	20	19
2				
3		#5 x 6'-1 1/2" (LEVEL II, DUAL COATED)	40	40
4				
5		#6 x 19'-6" (LEVEL II, DUAL COATED)	7	7
6				
7	R-80ID	#8 BENT BAR (LEVEL II, DUAL COATED)	7	7
8				
9	MK-R7	4T x 7 1/8" SNIFF LIFT LIFTER (GALVANIZE)	4	4
10		4" I.D. x 1'-3" PVC SLEEVE	5	5

7-1-14 REVISED AS NOTED

APPROVAL STAMP:	J.P. CARRARA & SONS INC. Precast & Prestress Manufacturer 2464 CASE STR., MIDDLEBURY, VERMONT 05753 Phone:(802)388-6361 Fax:(802)388-9010	THE BELDEN COMPANY, INC. CONTRACTOR RUTLAND, VERMONT
	STATE OF VERMONT AGENCY OF TRANSPORTATION COUNTY OF RUTLAND	
	CITY OF RUTLAND ROUTE NO.: TH 13 (FOREST STREET) - URBAN COLLECTOR BRIDGE NO.: 14 PROJECT NO.: BRF 3000(18)	
	DATE: APR. 25, 2014 SCALE: NOTED CHKD: M.D. DFTM: B.L. JOB NO: 23430-014	
PRECAST APPROACH SLAB DETAILS		DWG. NO: AS2