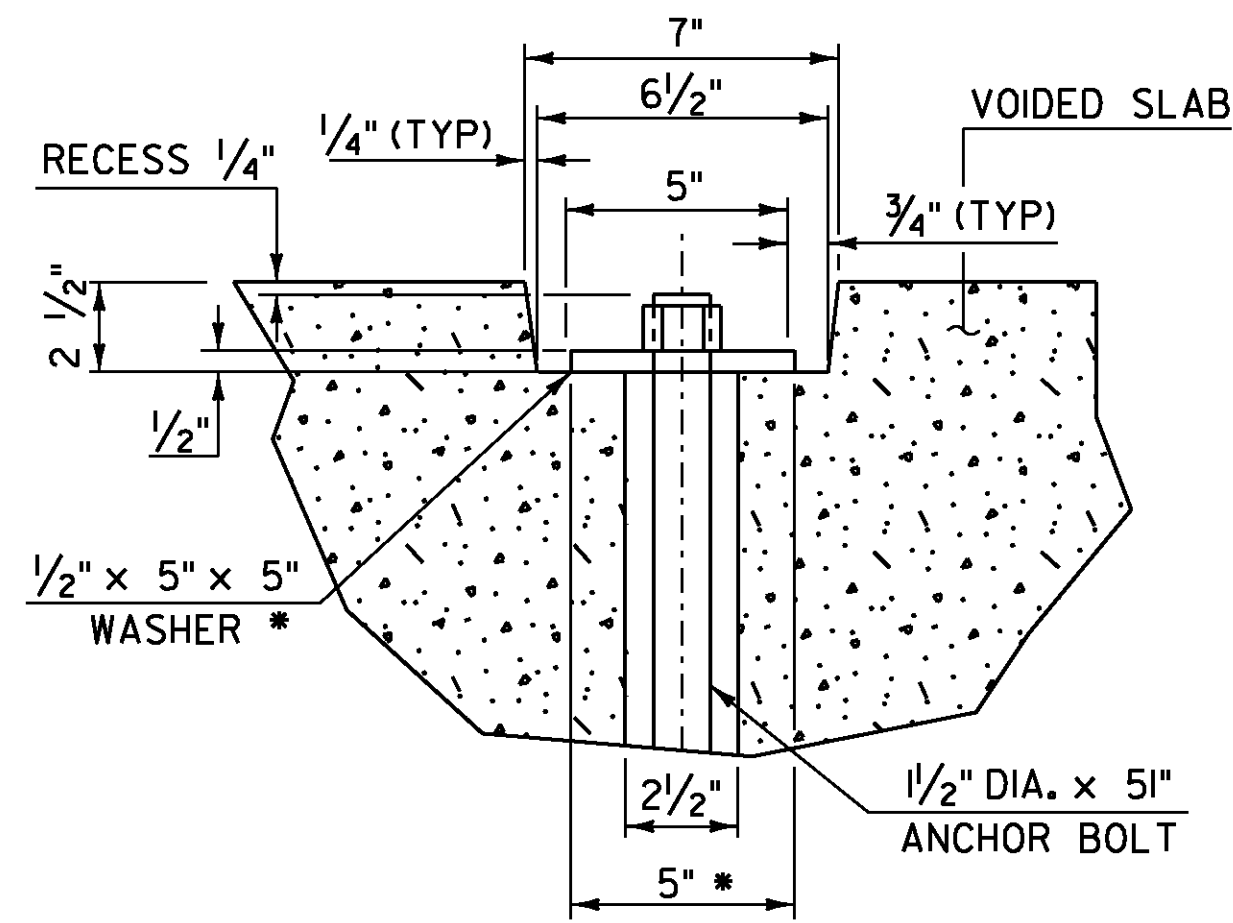


**END BRIDGE ANCHOR BOLT DETAIL**

NOT TO SCALE

NOTE:  
SEE SUBSECTION 714.08  
FOR ANCHOR BOLTS & NUTS

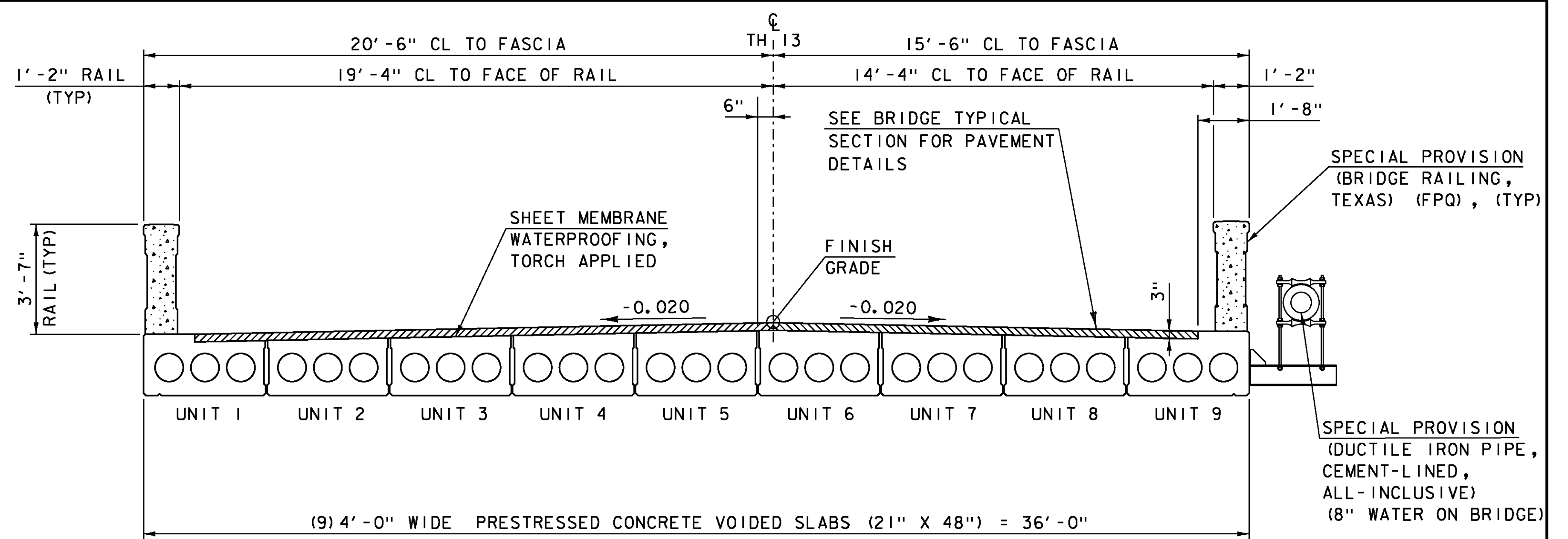
• 1/2" x 5" x 5" WASHER  
WITH 1/2" DIA.  
HOLE (GALVANIZED)



**SECTION A-A**

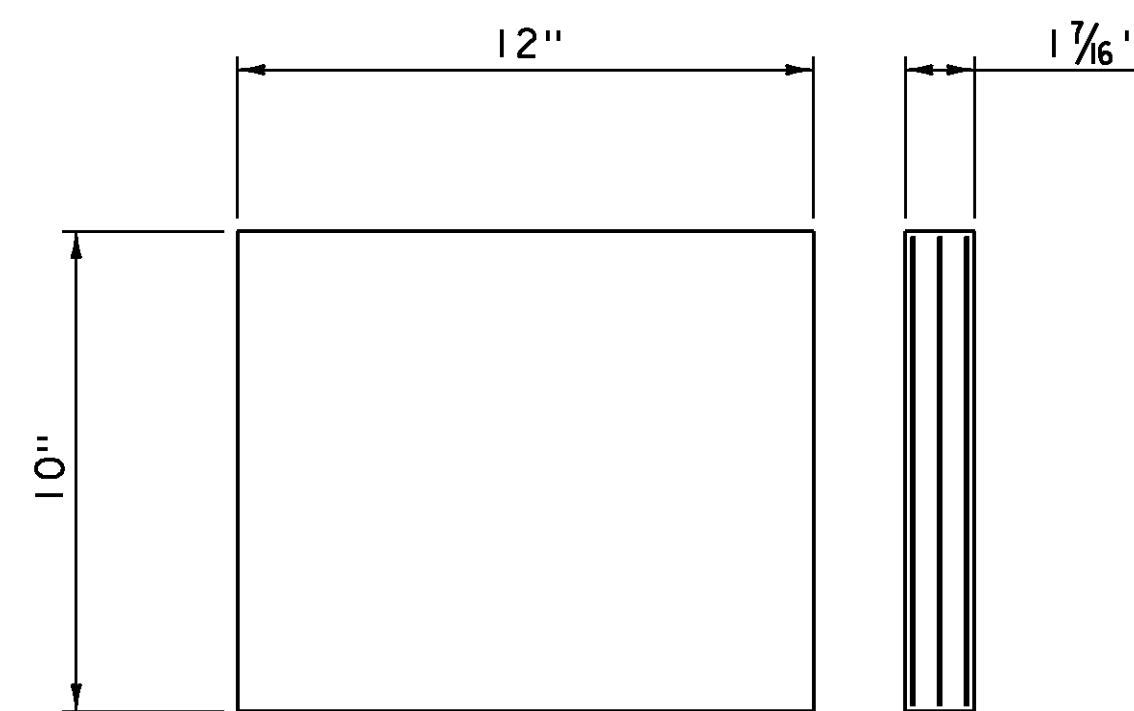
NOT TO SCALE

- NOTES:
1. TRANSVERSE TENDONS SHALL BE COVERED BY SEAMLESS POLYPROPYLENE SHEATH (WITH CORROSION INHIBITOR GREASE BETWEEN SHEATH AND TENDON) FOR THE LENGTH OF TENDON, EXCEPT AT ANCHORAGE LOCATIONS. TENDONS SHALL BE TENSIONED TO 145 KIPS.
  2. THE 1/2" PLATE SHALL CONFORM TO AASHTO M 270M/ M 270 GRADE 50. THE PLATE AND CHUCK SHALL BE GALVANIZED ACCORDING TO AASHTO M111M/ M111.



**BRIDGE DECK TYPICAL SECTION**

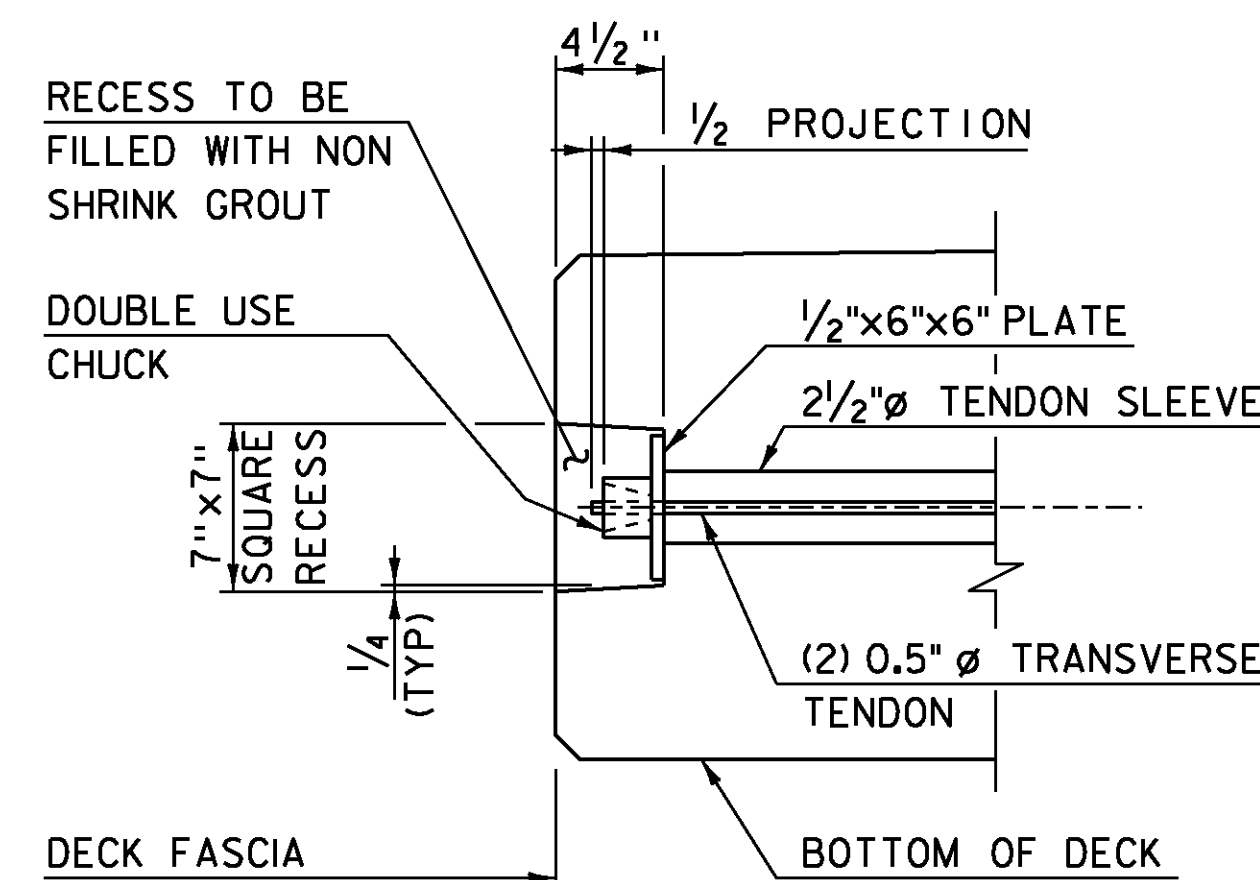
SCALE: 3/8" = 1'-0"



**ELASTOMERIC BEARING DETAIL**

SCALE: 3" = 1'-0"

- 1/8" ELASTOMERIC OUTER LAYER (TOP, BOTTOM, AND SIDES)
- (2) 1/2" LAYERS OF INTERIOR ELASTOMERIC ALTERNATING W/
- (3) 1/16" STEEL REINFORCING PLATES



**TRANSVERSE TENDON CHUCK DETAIL**

SCALE: 1/2" = 1'-0"

**BEARING NOTES:**

1. BEARINGS WILL BE PAID FOR UNDER ITEM 531.17, "BEARING DEVICE ASSEMBLY, STEEL REINFORCED ELASTOMERIC PAD".
2. ALTERNATE CONFIGURATIONS FOR ELASTOMERIC BEARINGS MAY BE SUBMITTED FOR APPROVAL. ANY ALTERNATE BEARING SUBMITTED SHALL BE DESIGNED AND CERTIFIED TO MEET THE LOADS AND CRITERIA SHOWN ON THIS SHEET AND MAINTAIN THE ANCHORAGE SYSTEM SHOWN. THE BEARINGS SHALL BE DESIGNED ACCORDING TO AASHTO "LRFD BRIDGE DESIGN SPECIFICATIONS" 2012 EDITION AND ITS LATEST REVISIONS.
4. ALL REINFORCEMENT BETWEEN LAYERS OF ELASTOMERIC SHALL BE STEEL GRADE 50. NO FABRIC REINFORCEMENT WILL BE PERMITTED.
5. ELASTOMERIC BEARINGS REINFORCED WITH STEEL SHALL HAVE A 1/8" EDGE SEAL OF ELASTOMERIC INTEGRAL WITH THE BEARING OVER ALL PLATES.
6. DESIGN CRITERIA:
  - A. TEMPERATURE RANGE: 80 F
  - B. 50 DUROMETER ELASTOMERIC
  - C. MAXIMUM BEARING STRESS: 1000 psi
  - D. DESIGN ROTATION: 0.010 rad
  - E. REACTION/BEAM:
    - RDL: 16 kips
    - RLl+1: 19 kips
7. THE FABRICATOR SHALL SUPPLY A SELF ADHESIVE COMPRESSIBLE SEALER BETWEEN THE BOTTOM OF THE UNITS AND THE BRIDGE SEAT. THIS COMPRESSIBLE SEALER SHALL SURROUND THE 2 1/2" DIA SLEEVE IN THE UNIT. THE PURPOSE OF THE SEALER IS TO FACILITATE PLACEMENT OF THE MORTAR AROUND THE ANCHOR BOLTS. PAYMENT WILL BE INCLUDED IN THE UNIT PRICE BID FOR ITEM 535.17, "BEARING DEVICE ASSEMBLY, STEEL REINFORCED ELASTOMERIC PAD"

PROJECT NAME: RUTLAND CITY  
PROJECT NUMBER: BRF 3000 (18)

FILE NAME: s96j244sup.dgn  
PROJECT LEADER: C. CARLSON  
DESIGNED BY: M. EVANS-MONGEON  
BRIDGE VOIDED SLAB DETAILS I

PLOT DATE: 28-FEB-2014  
DRAWN BY: M. LONGSTREET  
CHECKED BY: M. UMBERGER  
SHEET 19 OF 44