

GPS CONTROL POINTS

HVCTRL #1

RUT 13 FOREST  
 NORTH = 398824.83  
 EAST = 1513079.51  
 ELEV. = 538.27

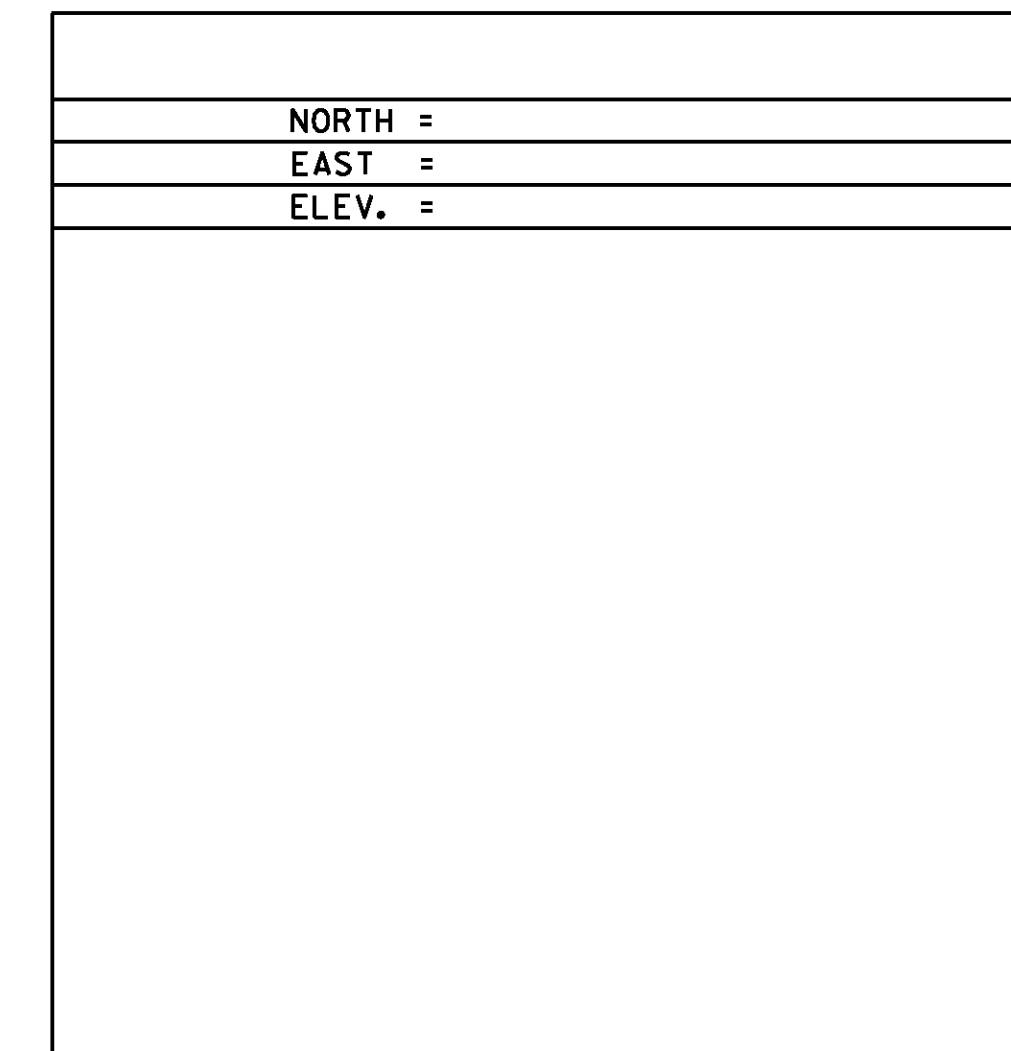
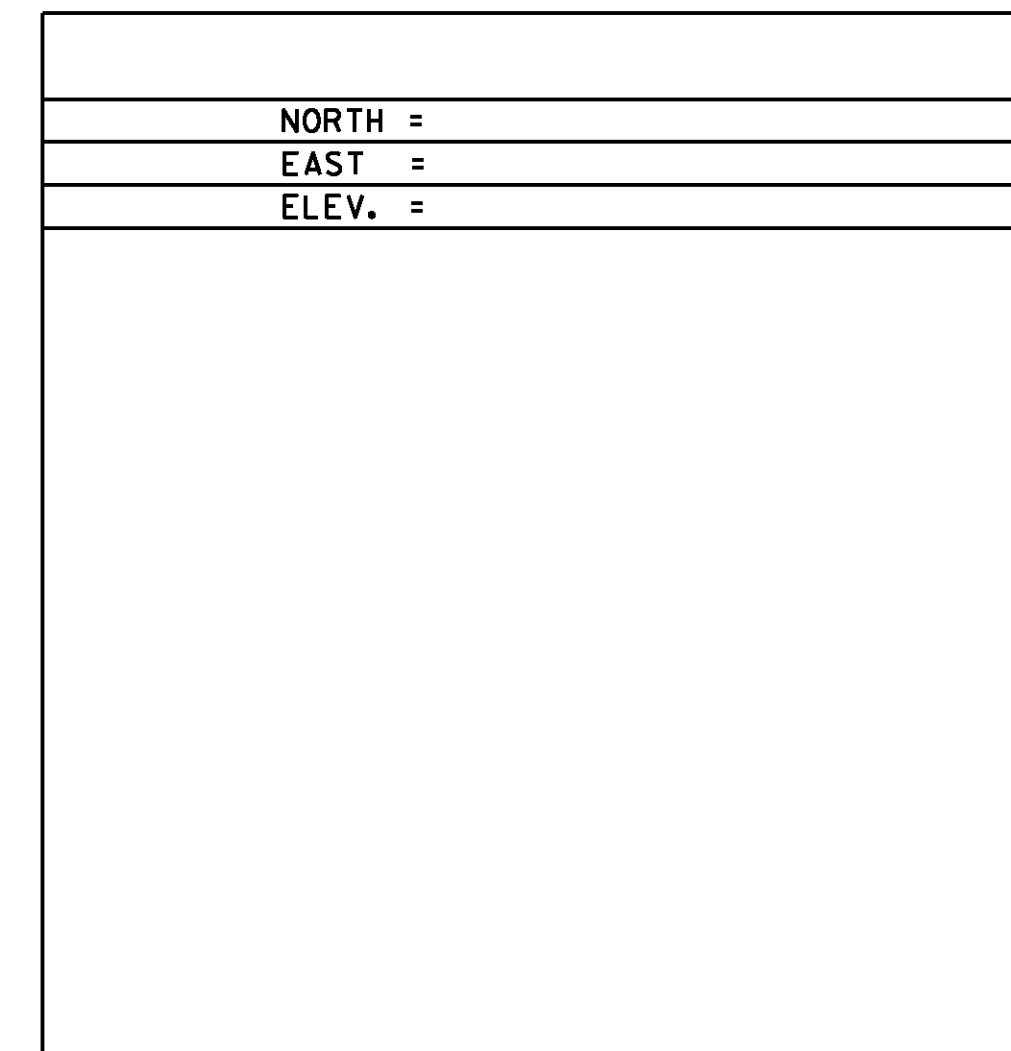
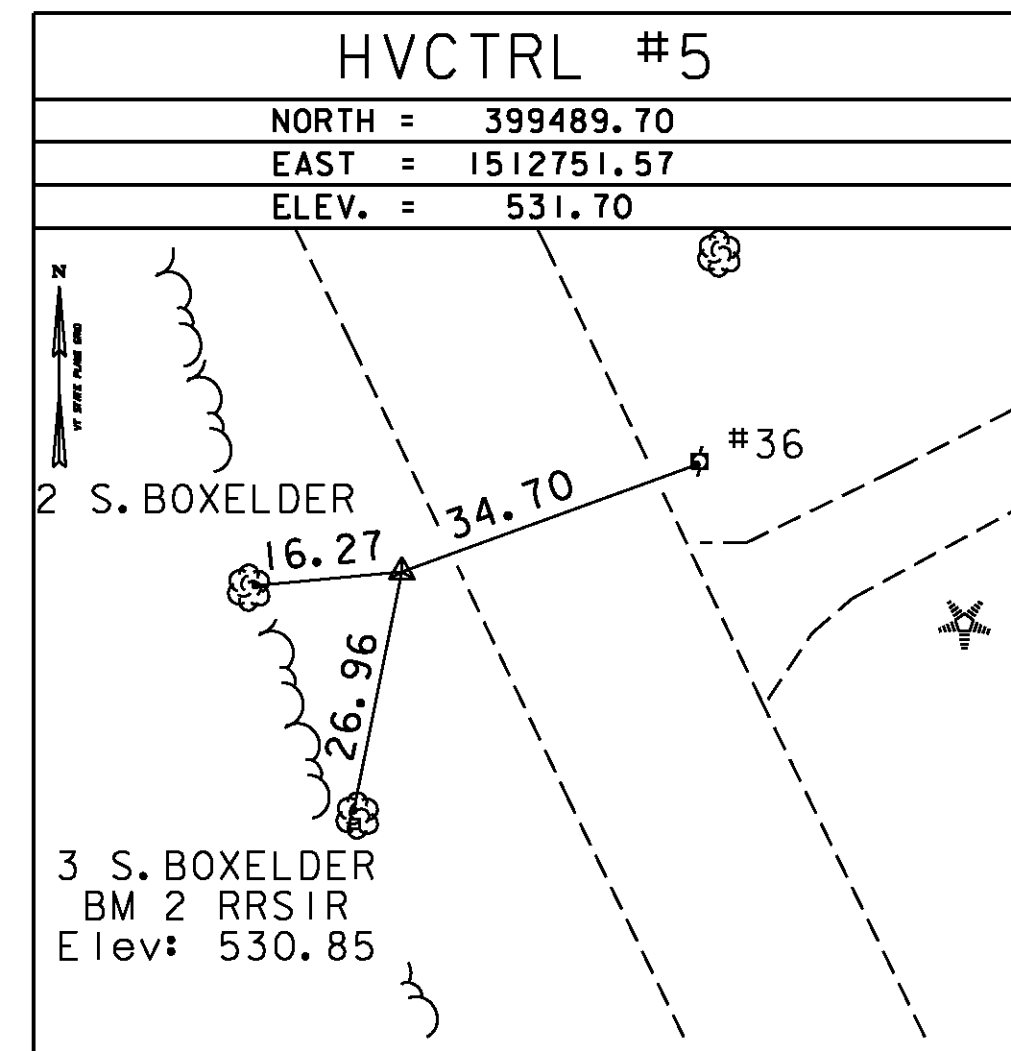
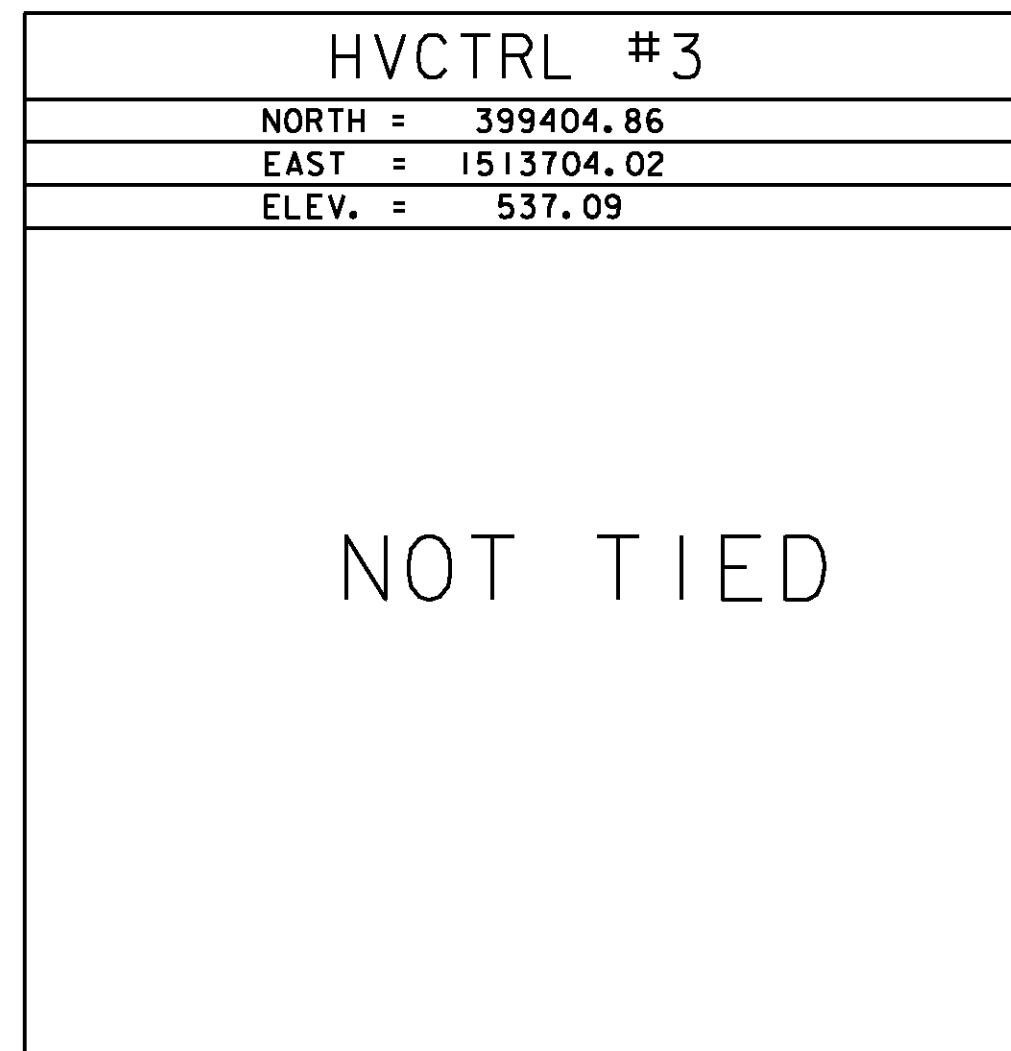
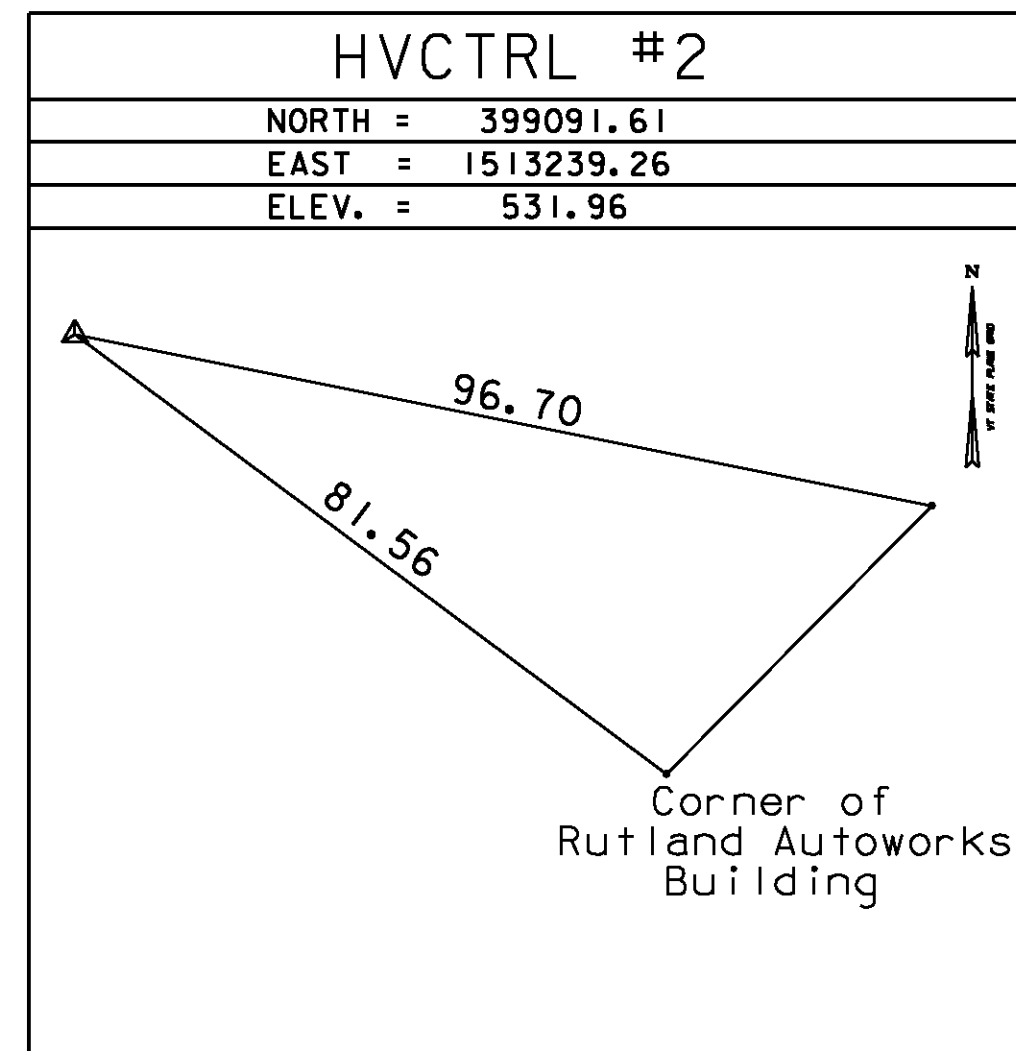
HVCTRL #4

RUT 12 RR PARK  
 NORTH = 399759.65  
 EAST = 1514480.29  
 ELEV. = 543.34

GENERAL LOCATION, RUTLAND, VT. TO REACH FROM THE INTERSECTION OF U.S.ROUTE 7 AND U.S.ROUTE 4 WEST, SOUTH OF RUTLAND, GO NORTH ALONG U.S.ROUTE 7 FOR 1.25 MI(2.01KM) TO THE INTERSECTION OF PARK STREET LEFT, TURN LEFT AND GO WEST ALONG PARK STREET FOR 0.5 MI(0.8 KM) TO THE INTERSECTION OF FOREST STREET RIGHT AND A PAVED DRIVE LEFT AND THE MARK ON THE LEFT. IT IS IN A GRASS STRIP BETWEEN THE PAVED DRIVE AND A GRAVEL DRIVE. THE MARK IS SET 10 CM ABOVE GROUND SURFACE IN THE TOP OF A 60 CM DIAMETER CONCRETE MONUMENT. IT IS 7.4 M (24.3 FT) SOUTH OF THE CENTERLINE OF PARK STREET, 9.9 M (32.5 FT) EAST OF THE CENTERLINE OF THE PAVED DRIVE, 2.5 M (8.2 FT) WEST OF THE CENTERLINE OF THE GRAVEL DRIVE, 13.3 M (43.6 FT) NORTHWEST OF THE NORTHWEST FOUNDATION CORNER OF HOUSE NO.121, AND 12.9 M (42.3 FT) WEST NORTHWEST OF THE NORTHWEST CORNER OF THE PORCH ON HOUSE NO.121.

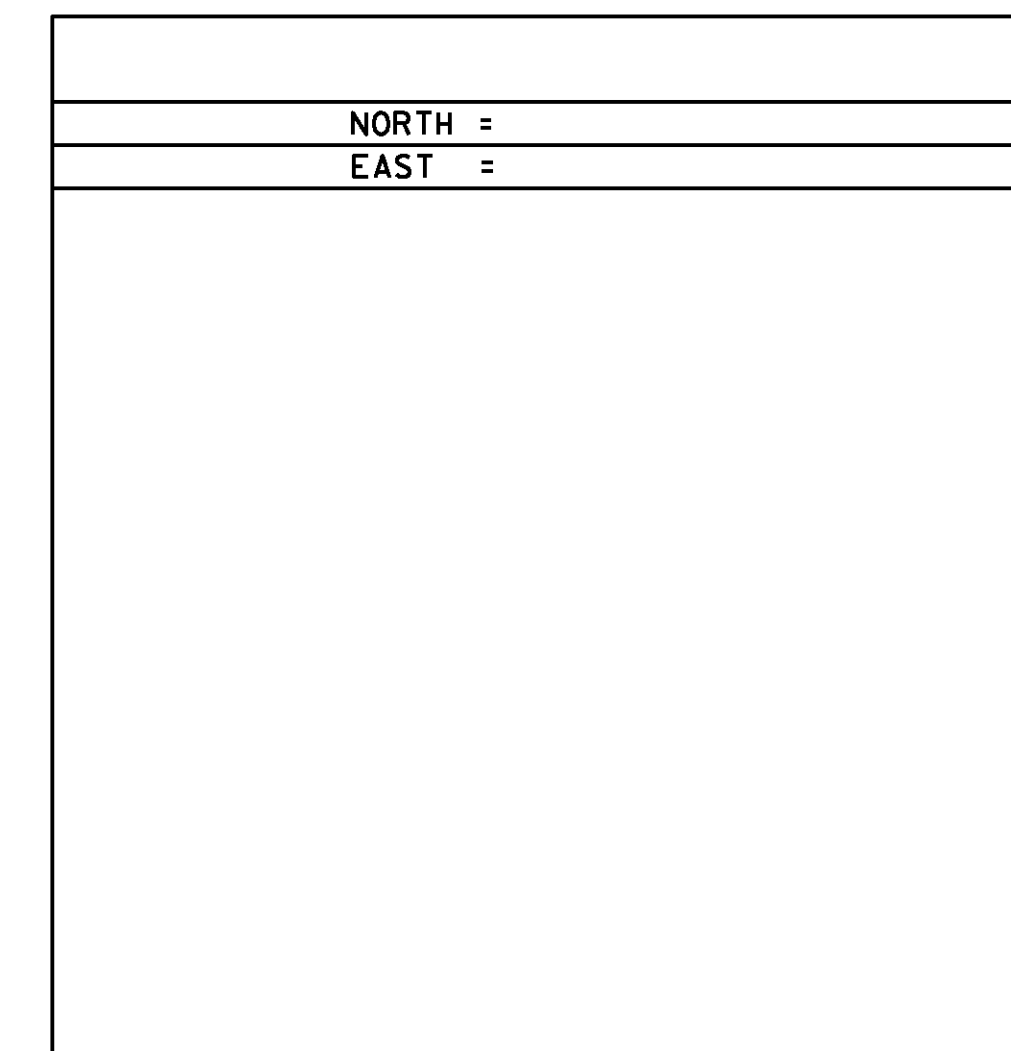
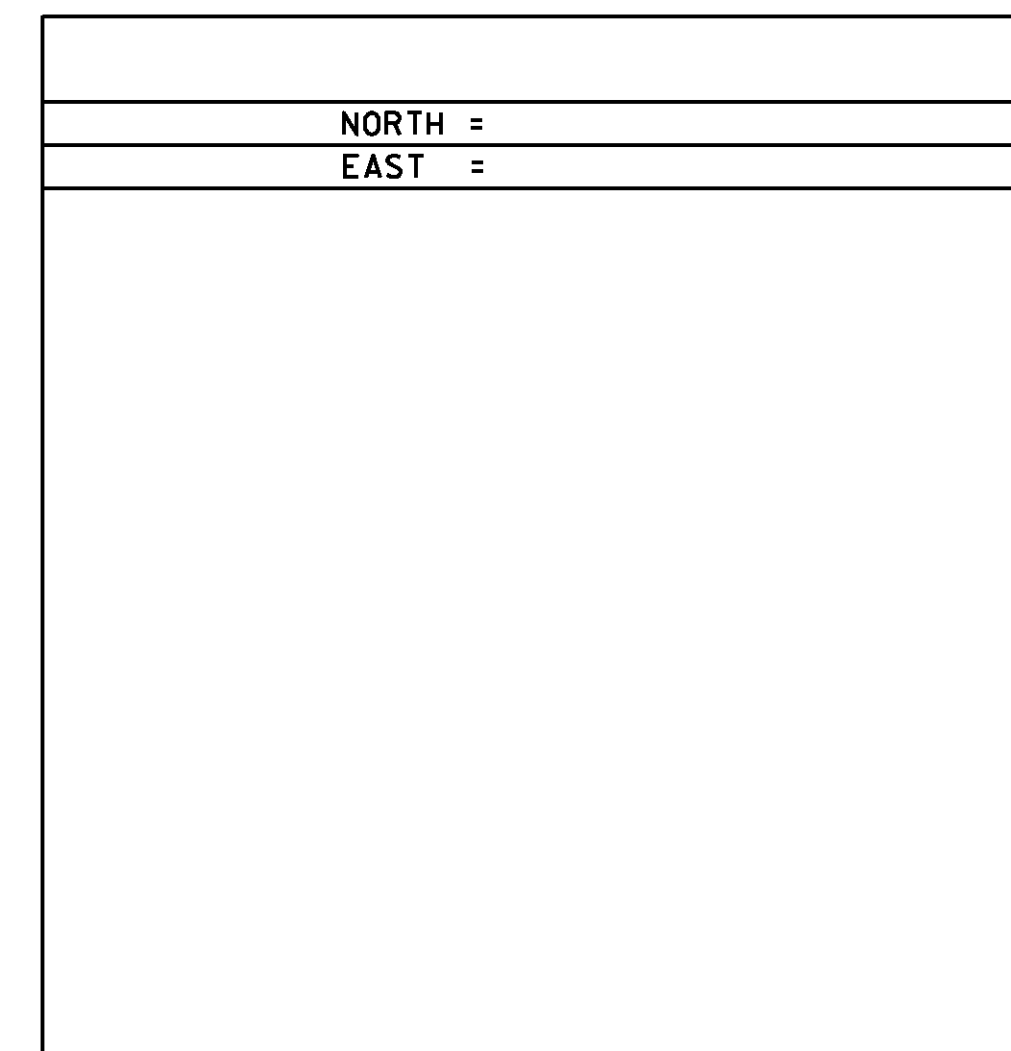
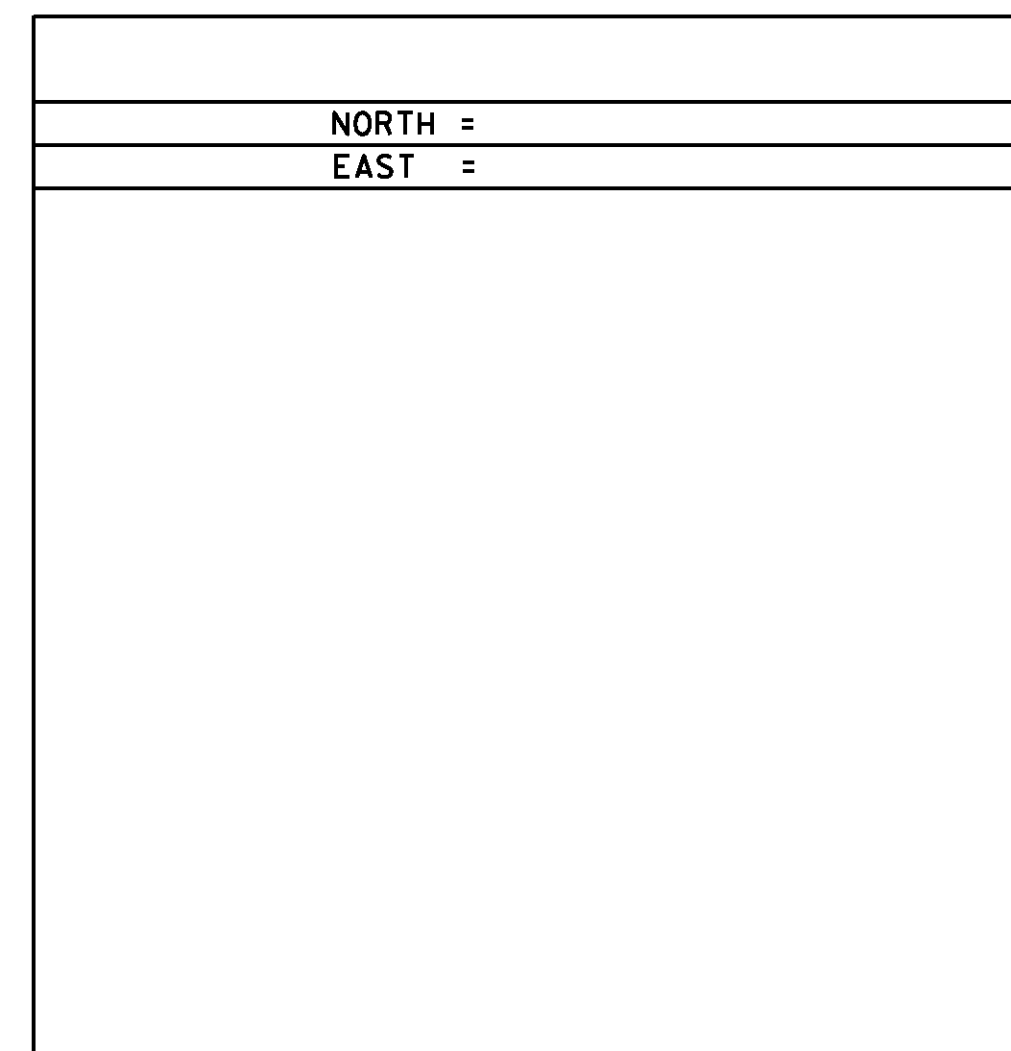
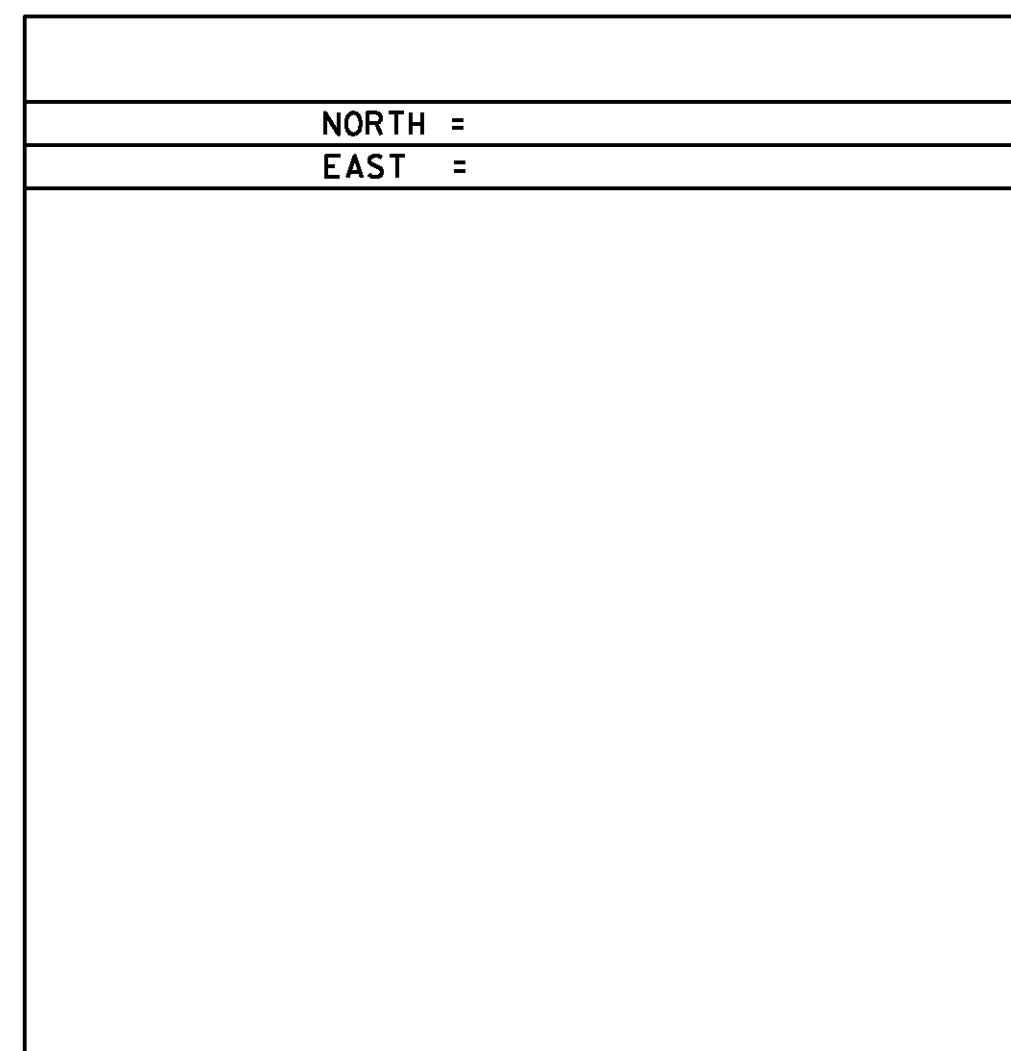
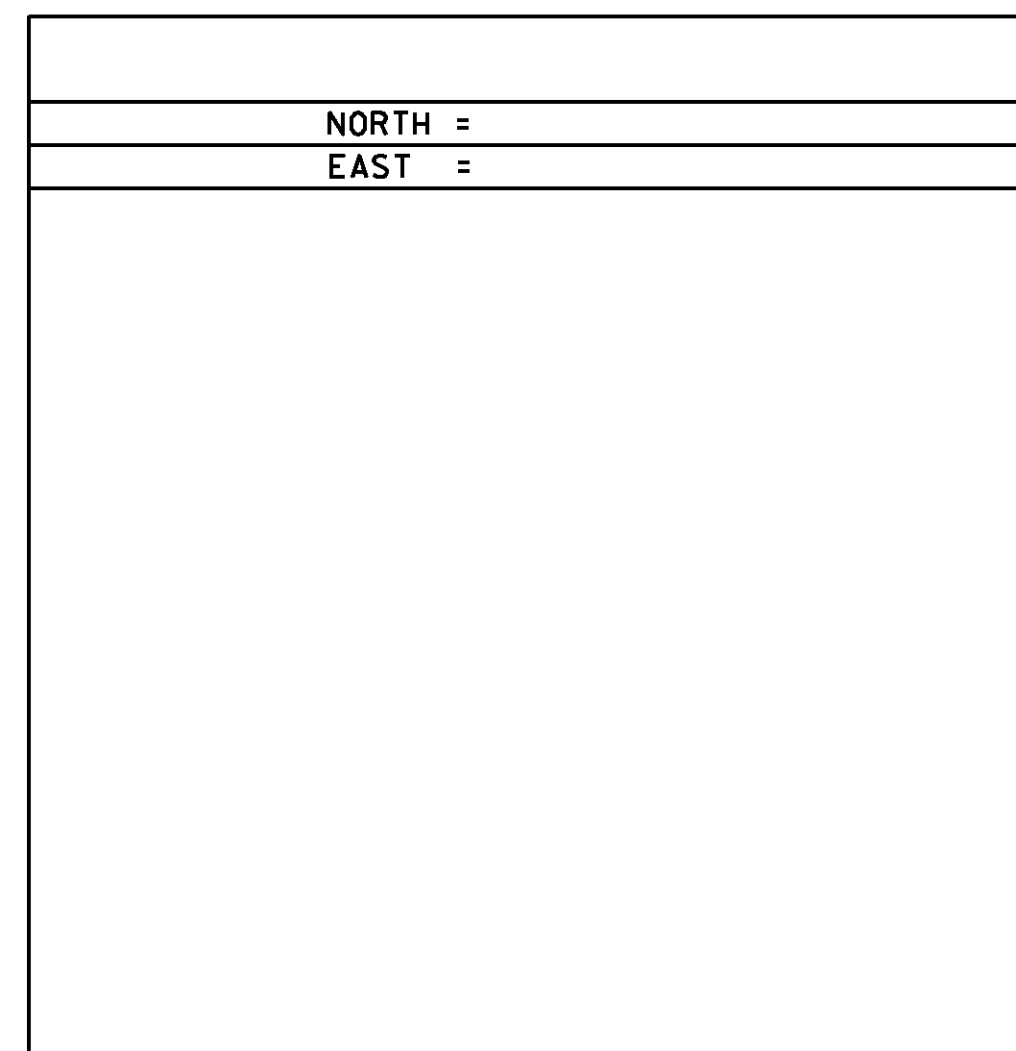
GENERAL LOCATION, RUTLAND, VT. TO REACH FROM THE INTERSECTION OF U.S.ROUTE 7 AND U.S.ROUTE 4 WEST, SOUTH OF RUTLAND, GO NORTH ALONG U.S.ROUTE 7 FOR 1.25 MI(2.01KM) TO THE INTERSECTION OF PARK STREET LEFT, TURN LEFT AND GO WEST ALONG PARK STREET FOR 0.3 MI(0.5 KM) TO THE INTERSECTION OF THE VERMONT RAILWAY TRACKS AND THE MARK ON THE RIGHT IN THE NORTHEAST QUADRANT OF THE INTERSECTION. THE MARK IS SET FLUSH WITH GROUND SURFACE IN THE TOP OF A 70 CM DIAMETER CONCRETE MONUMENT. IT IS 13.7 M (44.9 FT) NORTH OF THE CENTERLINE OF PARK STREET, 2.8 M (9.2 FT) EAST OF THE EAST RAIL OF THE MOST EASTERLY SET OF TRACKS OF THE RAILWAY, 3.0 M (9.8 FT) WEST OF THE WEST EDGE OF A GRAVEL PARKING LOT, 16.2 M (53.1FT) SOUTH OF THE SOUTHWEST CORNER OF THE VERMONT RAILWAY OFFICE BUILDING, AND 7.8 M (25.6 FT) NORTH OF A RAILROAD CROSSING GATE AND SIGNAL POLE.

TRAVERSE TIES



\* Main Traverse Completed 04/23/98 by L.Orvis P.C. & R.Bullock

ALIGNMENT TIES



DATUM	
VERTICAL	NAVD 88
HORIZONTAL	NAD 83 (96)
ADJUSTMENT	Compass

PROJECT NAME: RUTLAND CITY	
PROJECT NUMBER: BRF 3000(18)	
FILE NAME: s96j2441e.dgn	PLOT DATE: 28-FEB-2014
PROJECT LEADER: C. CARLSON	DRAWN BY: R. PELLETT
DESIGNED BY: SURVEY	CHECKED BY: M. E-M
TIE	SHEET 10 OF 44