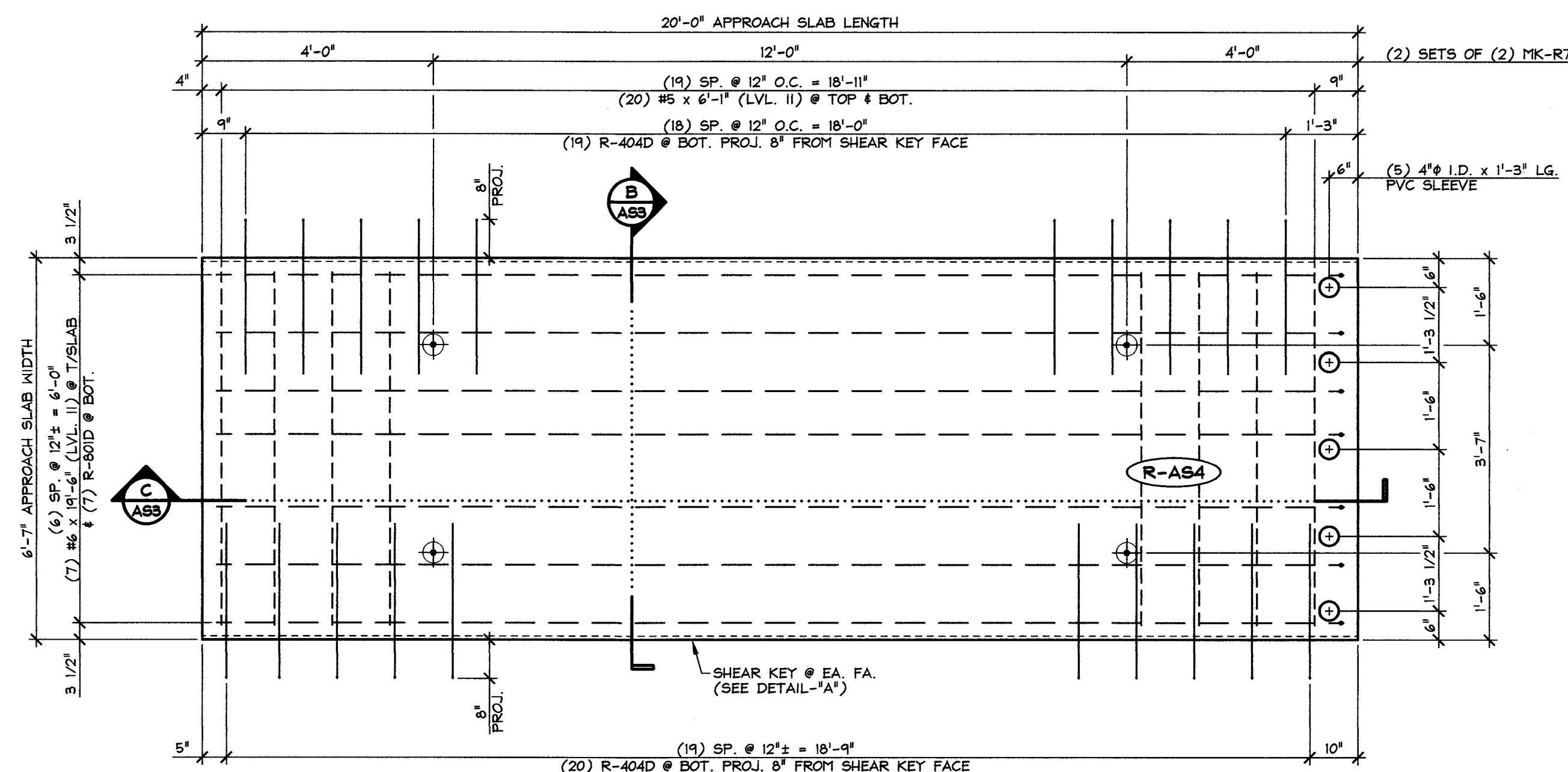
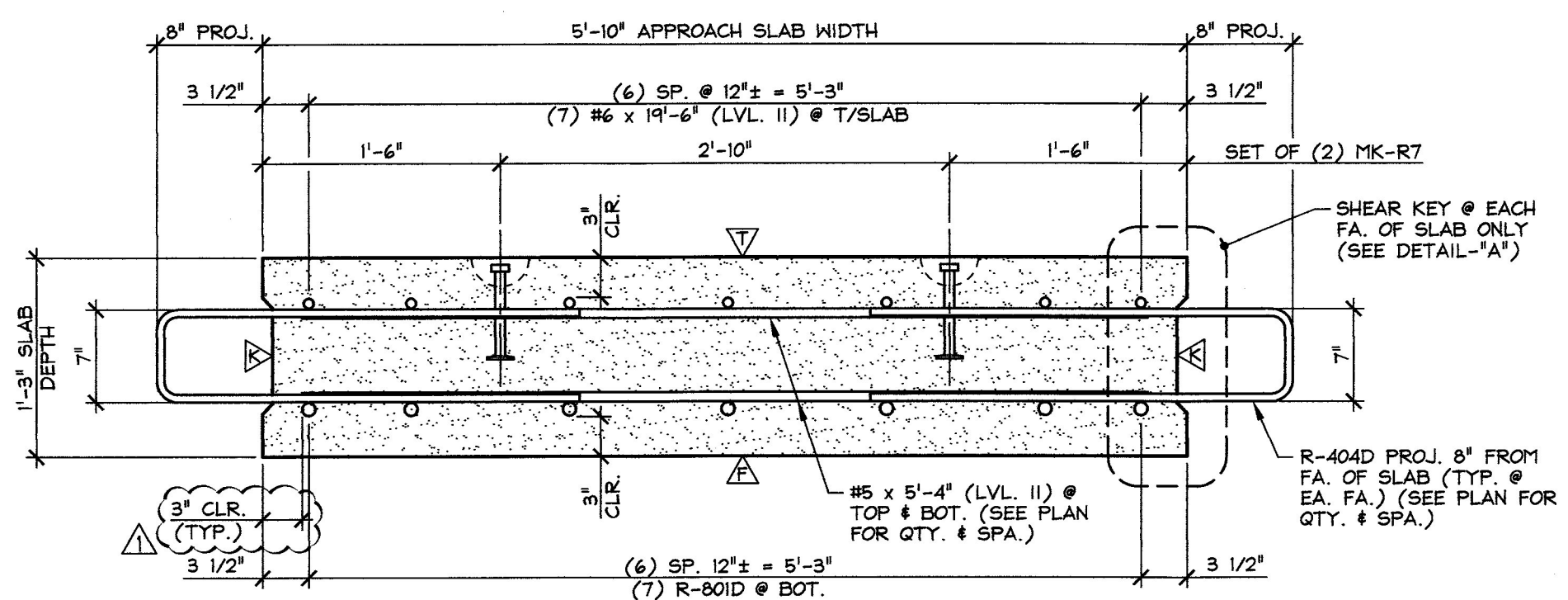


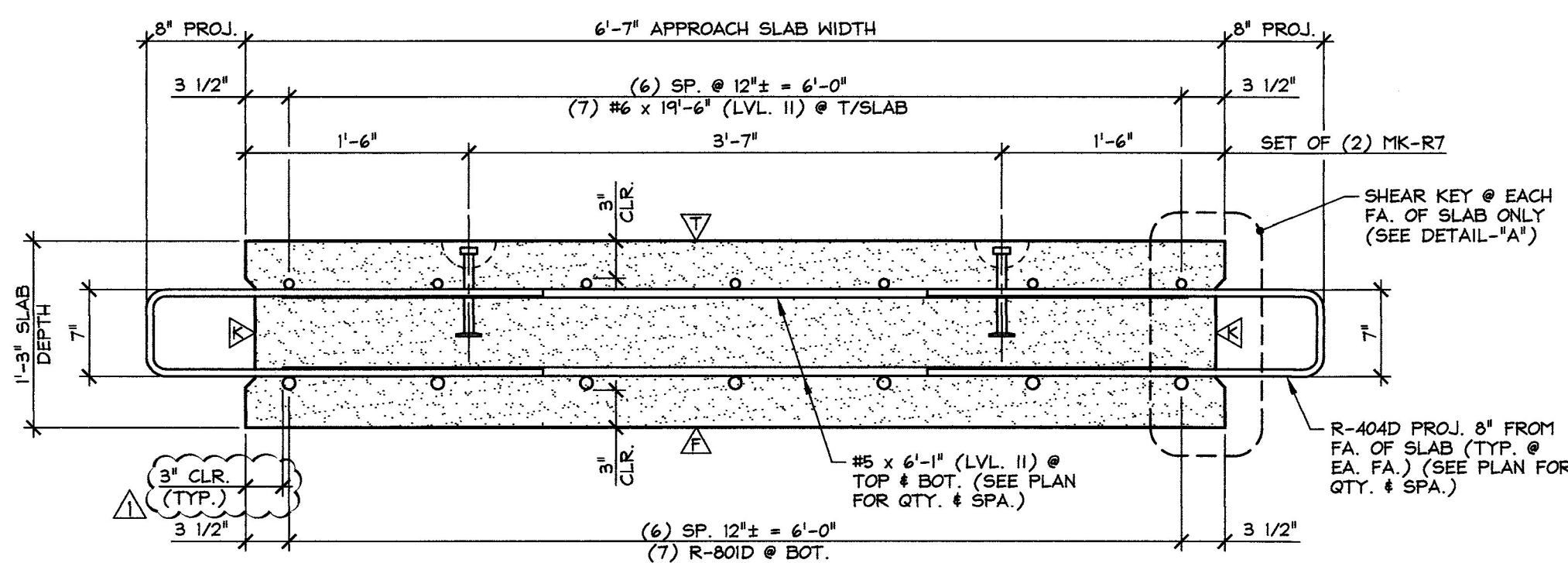
1 APPROACH SLAB PLAN VIEW IN FORM
AS3 1/2" = 1'-0"



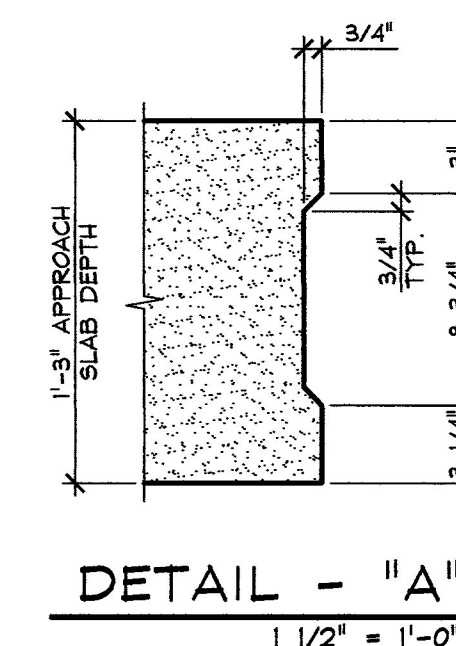
2 APPROACH SLAB PLAN VIEW IN FORM
AS3 1/2" = 1'-0"



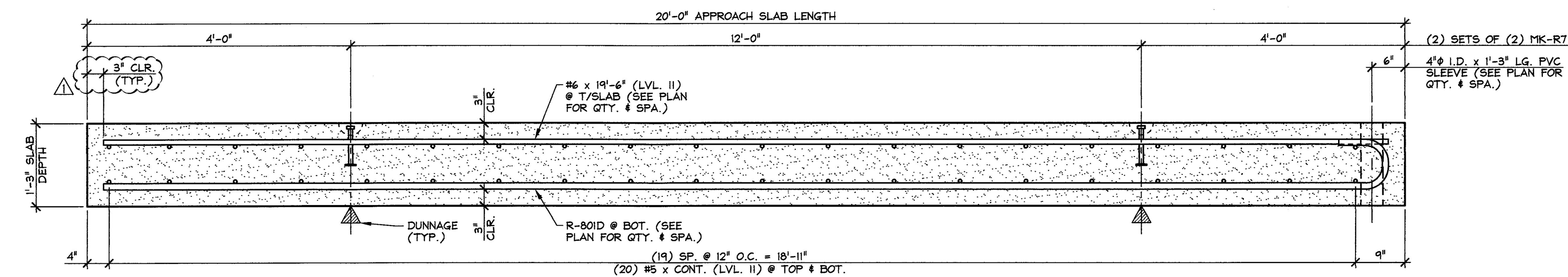
A TRANSVERSE SECTION
AS3 1" = 1'-0"



B TRANSVERSE SECTION
AS3 1" = 1'-0"



DETAIL - "A"
1 1/2" = 1'-0"



C LONGITUDINAL SECTION
AS3 3/4" = 1'-0"

Vermont Agency of Transportation
RECEIVED

CK'D BY M. Umberger OK'D BY C. Carlson

July 1, 2014

RESUBMIT No Approved
BY C. Carlson DATE 07/08/2014

7-1-14 REVISED AS NOTED

MATERIAL LIST / APPROACH SLAB				
MARK	QTY.	WT.	VOL.	
			R-AS3	R-AS4
MARK: R-AS3	4	10.8 T	5.3 cy	
MARK: R-AS4	2	12.2 T	6.0 cy	
ITEM	MARK	DESCRIPTION	QTY./SLAB	
1	R-404D	#4 BENT BAR (LEVEL II, DUAL COATED)	39	39
2		#5 x 5'-4" (LEVEL II, DUAL COATED)	40	
3		#5 x 6'-1" (LEVEL II, DUAL COATED)		40
4				
5		#6 x 19'-6" (LEVEL II, DUAL COATED)	7	7
6				
7	R-80ID	#8 BENT BAR (LEVEL II, DUAL COATED)	7	7
8				
9	MK-R7	4T x 7 1/8" SHIFT LIFT LIFTER (GALVANIZE)	4	4
10		4" I.D. x 1'-3" PVC SLEEVE	5	5

APPROVAL STAMP:

J.P. CARRARA & SONS INC.
Precast & Prestress Manufacturer
244 ONE STR. MOULBURY, VERMONT 05753 Phone: (802)388-6361 Fax: (802)388-9010

THE BELDEN COMPANY, INC.
CONTRACTOR
RUTLAND, VERMONT

STATE OF VERMONT AGENCY OF TRANSPORTATION
COUNTY OF RUTLAND

CITY OF RUTLAND
ROUTE NO. TH 13 (FOREST STREET) - URBAN COLLECTOR
BRIDGE NO.: 14 PROJECT NO.: BRP 3000(18)

DATE: APR. 25, 2014
SCALE: NOTED
CHKD: M.D. DFTM: B.L.
JOB NO: 23430-014

PRECAST APPROACH SLAB DETAILS
DWG. NO: AS3