

CONSTRUCTION NOTES NOT REVISED TO REFLECT CHANGES

SPECIAL PROVISION (DUCTILE IRON PIPE, CEMENT-LINED, ALL-INCLUSIVE) (8" WATER)
 2+50.0 TO 3+26.6 RT
 4+12.5 TO 4+88.3 RT

SPECIAL PROVISION (DUCTILE IRON PIPE, CEMENT-LINED, ALL-INCLUSIVE) (8" WATER ON BRIDGE)
 3+26.6 TO 4+12.5 RT

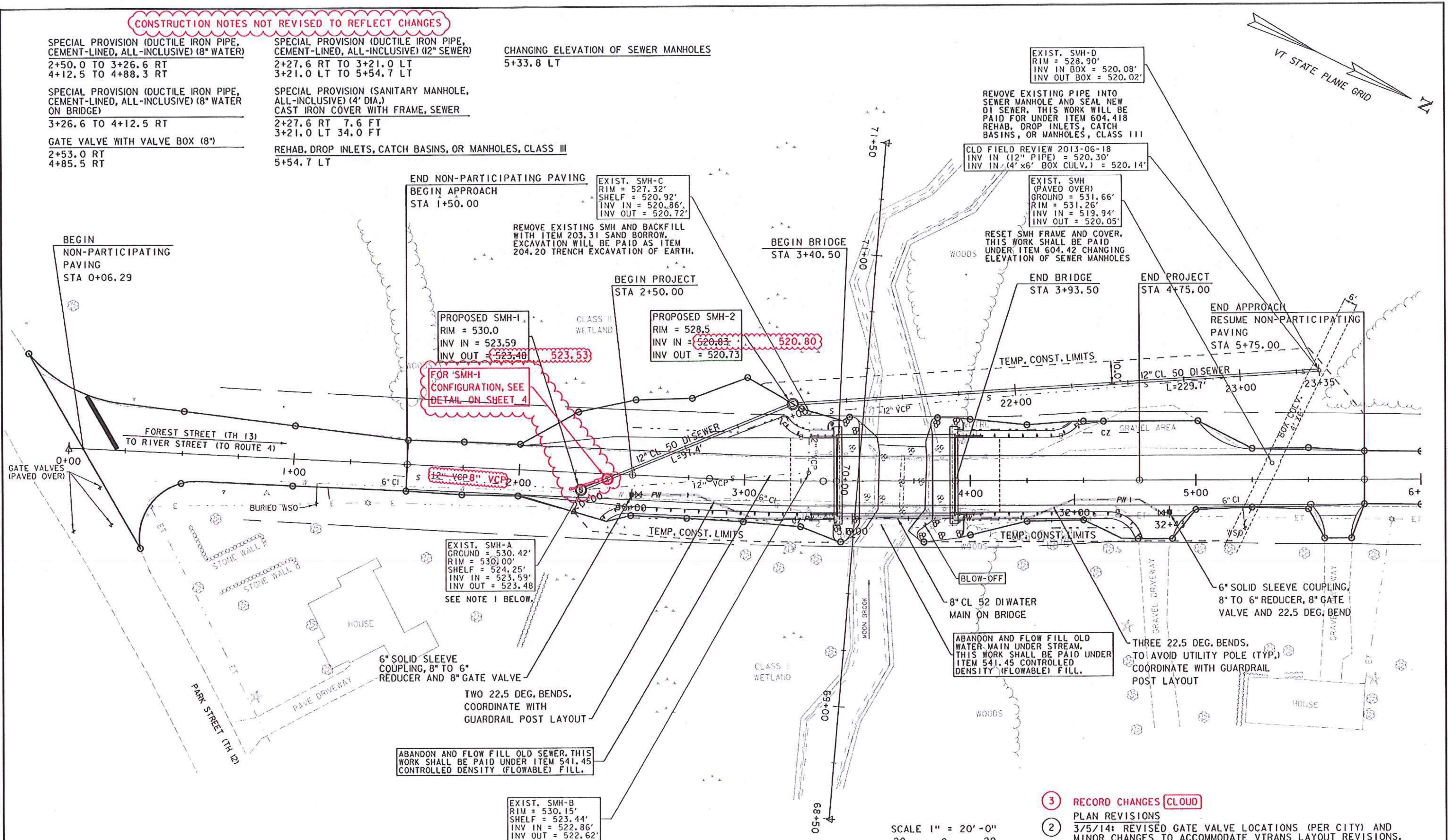
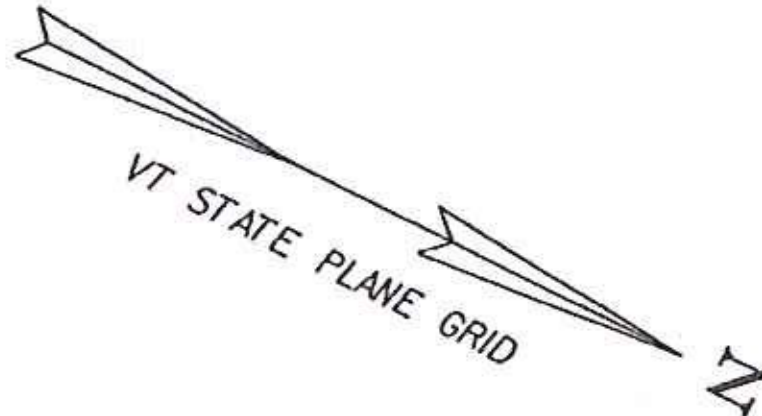
GATE VALVE WITH VALVE BOX (8")
 2+53.0 RT
 4+85.5 RT

SPECIAL PROVISION (DUCTILE IRON PIPE, CEMENT-LINED, ALL-INCLUSIVE) (12" SEWER)
 2+27.6 RT TO 3+21.0 LT
 3+21.0 LT TO 5+54.7 LT

SPECIAL PROVISION (SANITARY MANHOLE, ALL-INCLUSIVE) (4' DIA.)
 CAST IRON COVER WITH FRAME, SEWER
 2+27.6 RT 7.6 FT
 3+21.0 LT 34.0 FT

REHAB. DROP INLETS, CATCH BASINS, OR MANHOLES, CLASS III
 5+54.7 LT

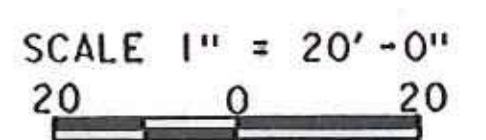
CHANGING ELEVATION OF SEWER MANHOLES
 5+33.8 LT



NOTE:
 1. REMOVE EXISTING SMH-A AND REPLACE WITH NEW MANHOLE SMH-1 AT SAME LOCATION. PROVIDE SPOOL SECTION OF 12" SDR 35 SEWER PIPE AND SOLID SLEEVE COUPLING TO CONNECT TO EXISTING 12" VCP. ADJUST NEW RIM ELEVATION TO FINAL ROADWAY GRADE. ALL EXCAVATION, MATERIALS AND WORK TO REMOVE AND REPLACE MANHOLE AND CONNECT TO EXISTING SEWER SHALL BE INCIDENTAL TO ITEM 900.620 SPECIAL PROVISION (SANITARY MANHOLE, ALL-INCLUSIVE) (4' DIA.).

EXIST. SMH-B
 RIM = 530.15'
 SHELF = 523.44'
 INV IN = 522.86'
 INV OUT = 522.62'

REMOVE EXISTING SMH AND BACKFILL WITH ITEM 203.31 SAND BORROW. EXCAVATION WILL BE PAID AS ITEM 204.20 TRENCH EXCAVATION OF EARTH.



- 3 RECORD CHANGES **CLOUD**
- 2 PLAN REVISIONS
- 2 3/5/14: REVISED GATE VALVE LOCATIONS (PER CITY) AND MINOR CHANGES TO ACCOMMODATE VTRANS LAYOUT REVISIONS.
- 1 1/16/14: MINOR NOTE REVISIONS.

WATER AND SEWER PLANS		PROJECT NAME: RUTLAND CITY
		PROJECT NUMBER: BRF 3000(18)
	540 Commercial Street, Manchester, NH 03101 (603) 668-8223 • Fax: (603) 668-8892 cl@cldeing.com • www.cldeing.com Maine • New Hampshire • Vermont	FILE NAME: s96j244bdr.dgn
		PLOT DATE: 3/5/2014
	PROJECT LEADER: C. BEAN	DRAWN BY: W. GORDON
	DESIGNED BY: D. LEWIS	CHECKED BY: S. REICHERT
	WATER/SEWER LAYOUT I	SHEET 5 OF 7