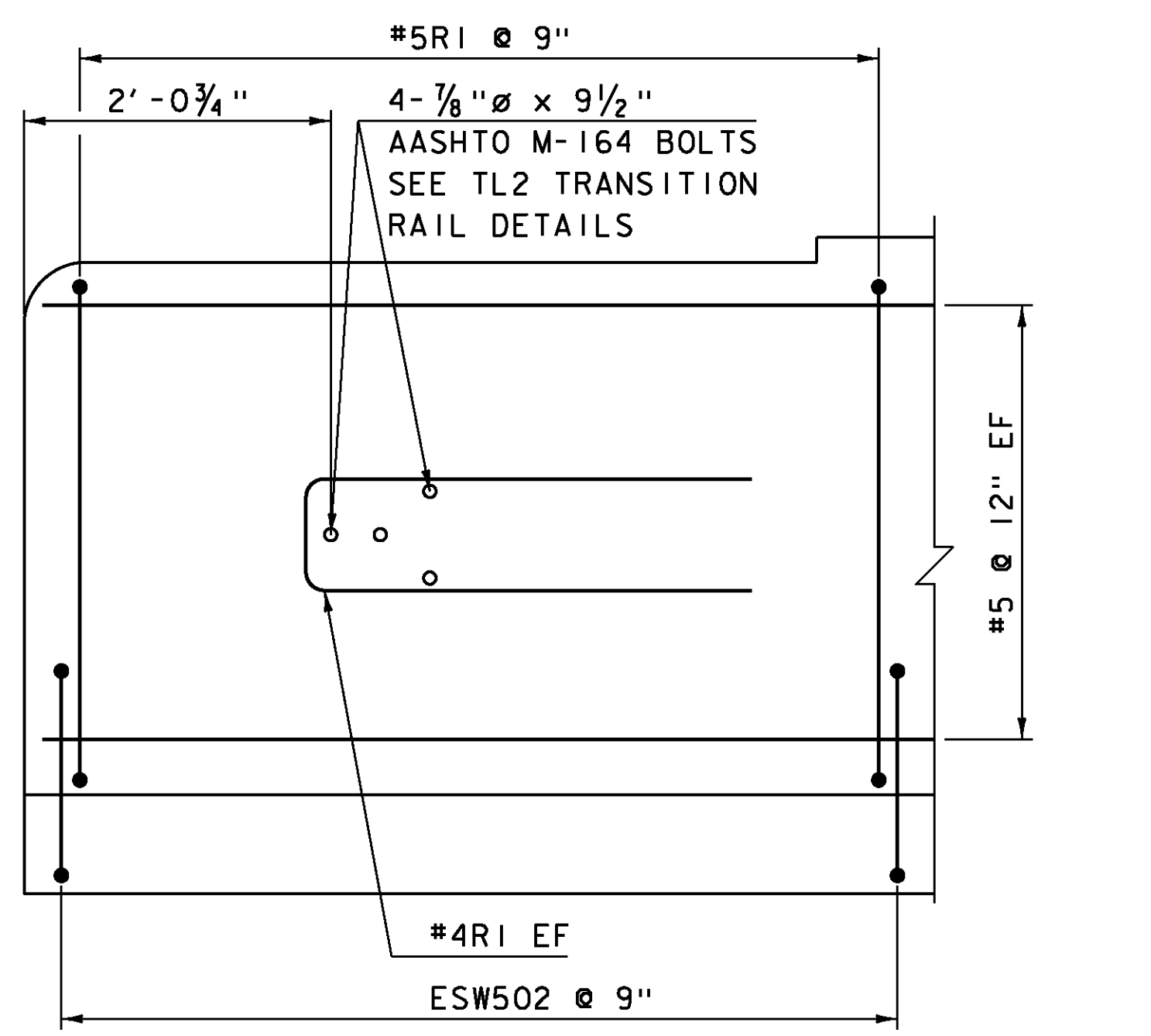
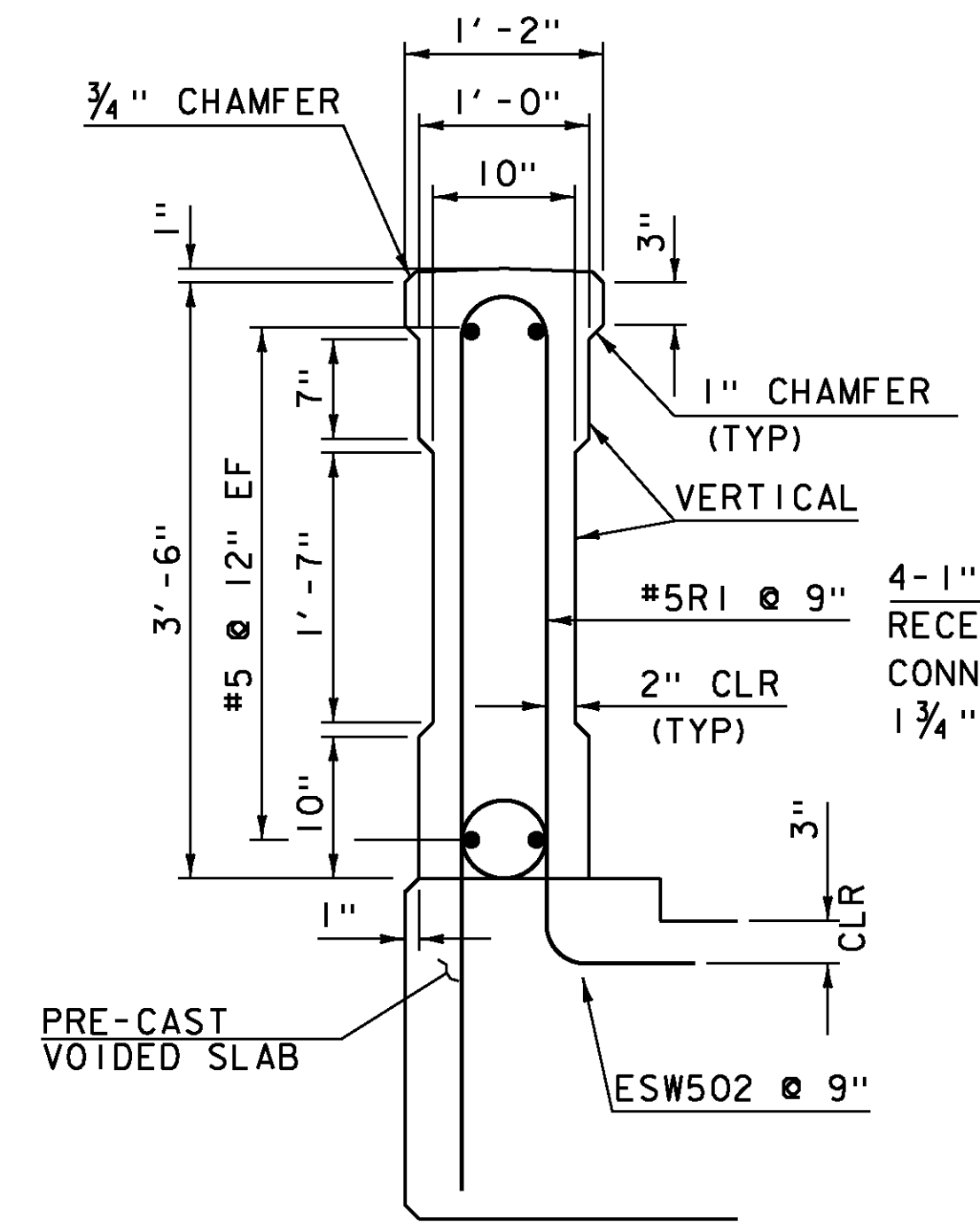


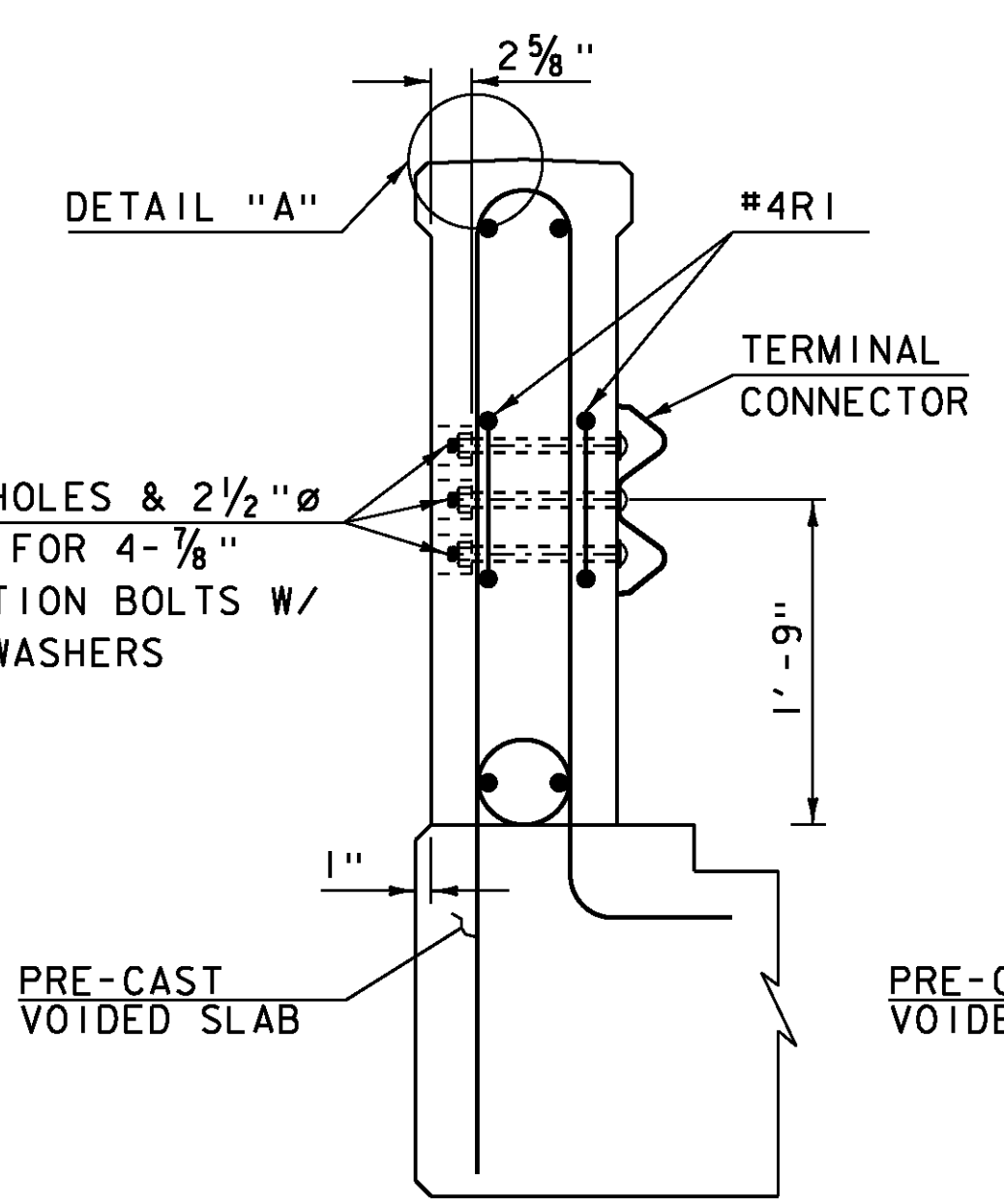
ROADWAY ELEVATION OF RAIL
 SCALE: VERTICAL: 1" = 1'-0"
 HORIZONTAL: 1/2" = 1'-0"



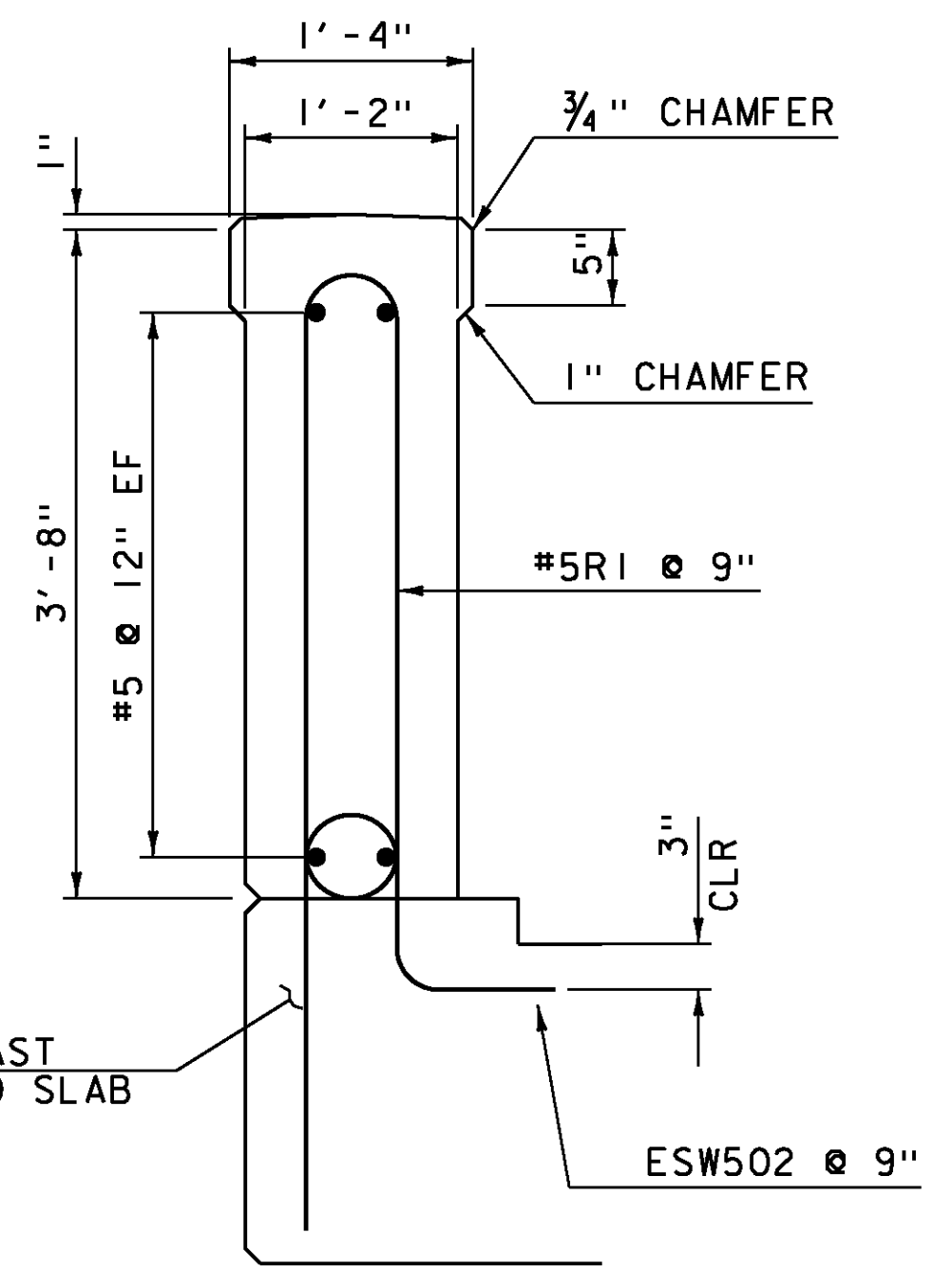
TYPICAL REINFORCING PLACEMENT
 SCALE 1" = 1'-0"



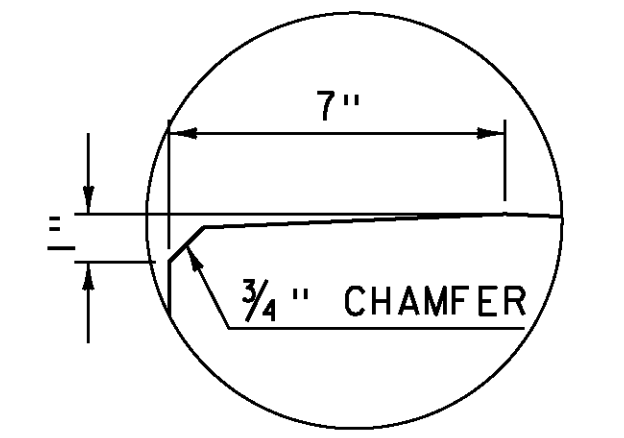
SECTION A-A
 SCALE 1" = 1'-0"



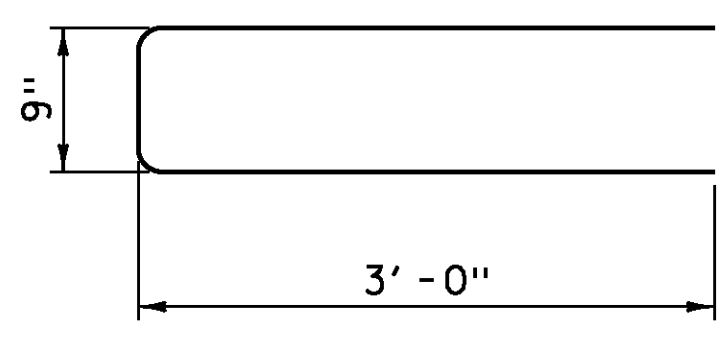
SECTION B-B
 SCALE 1" = 1'-0"



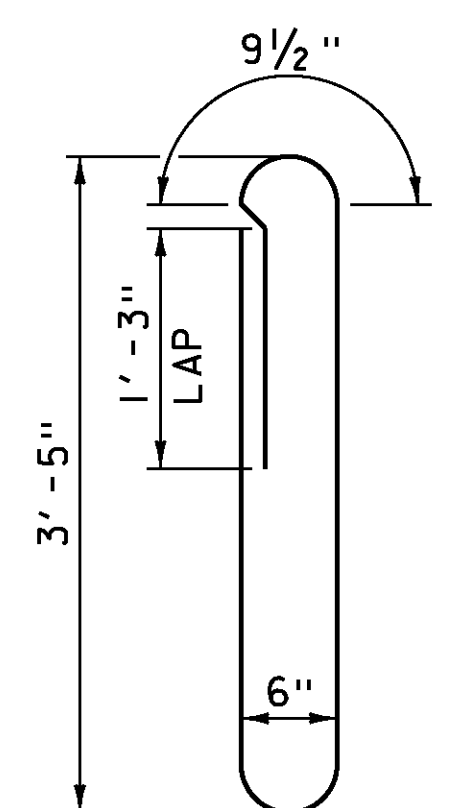
SECTION C-C
 SCALE 1" = 1'-0"



DETAIL "A"
 SCALE 3" = 1'-0"



BAR #4R1
 SCALE 1" = 1'-0"
 8 - REQUIRED



BAR #5R1
 SCALE 1" = 1'-0"
 164 - REQUIRED

- NOTES:**
- BRIDGE RAIL SHALL BE PAID FOR UNDER ITEM 900.640 "SPECIAL PROVISION (BRIDGE RAILING, TEXAS) (FPQ)"
 - REINFORCING STEEL SHALL MEET THE REQUIREMENTS OF SECTION 507 FOR LEVEL II REINFORCING AND WILL BE PAID FOR UNDER ITEM 900.640 SPECIAL PROVISION (BRIDGE RAILING, TEXAS) (FPQ)
 - ALL EXPOSED CONCRETE SHALL BE TREATED WITH WATER REPELLANT, SILANE IN ACCORDANCE WITH SECTION 514.
 - THE BRIDGE RAIL SHALL HAVE A RUBBED FINISH IN ACCORDANCE WITH SECTION 501.

NOTE:
 NF = NEAR FACE
 FF = FAR FACE
 EF = EACH FACE
 ▲ = CUT TO FIT IN FIELD
 3" CLEAR, UNLESS OTHERWISE SPECIFIED ON THE PLANS.
 2'-2" BAR LAP UNLESS OTHERWISE SPECIFIED ON THE PLANS.

PROJECT NAME:	RUTLAND CITY	PLOT DATE:	28-FEB-2014
PROJECT NUMBER:	BRF 3000 (18)	PROJECT LEADER:	C.W. CARLSON
FILE NAME:	s96j244rail.dgn	DESIGNED BY:	EVANS-MONGEON
		CHECKED BY:	EVANS-MONGEON
		BRIDGE RAIL DETAILS	SHEET 25 OF 44