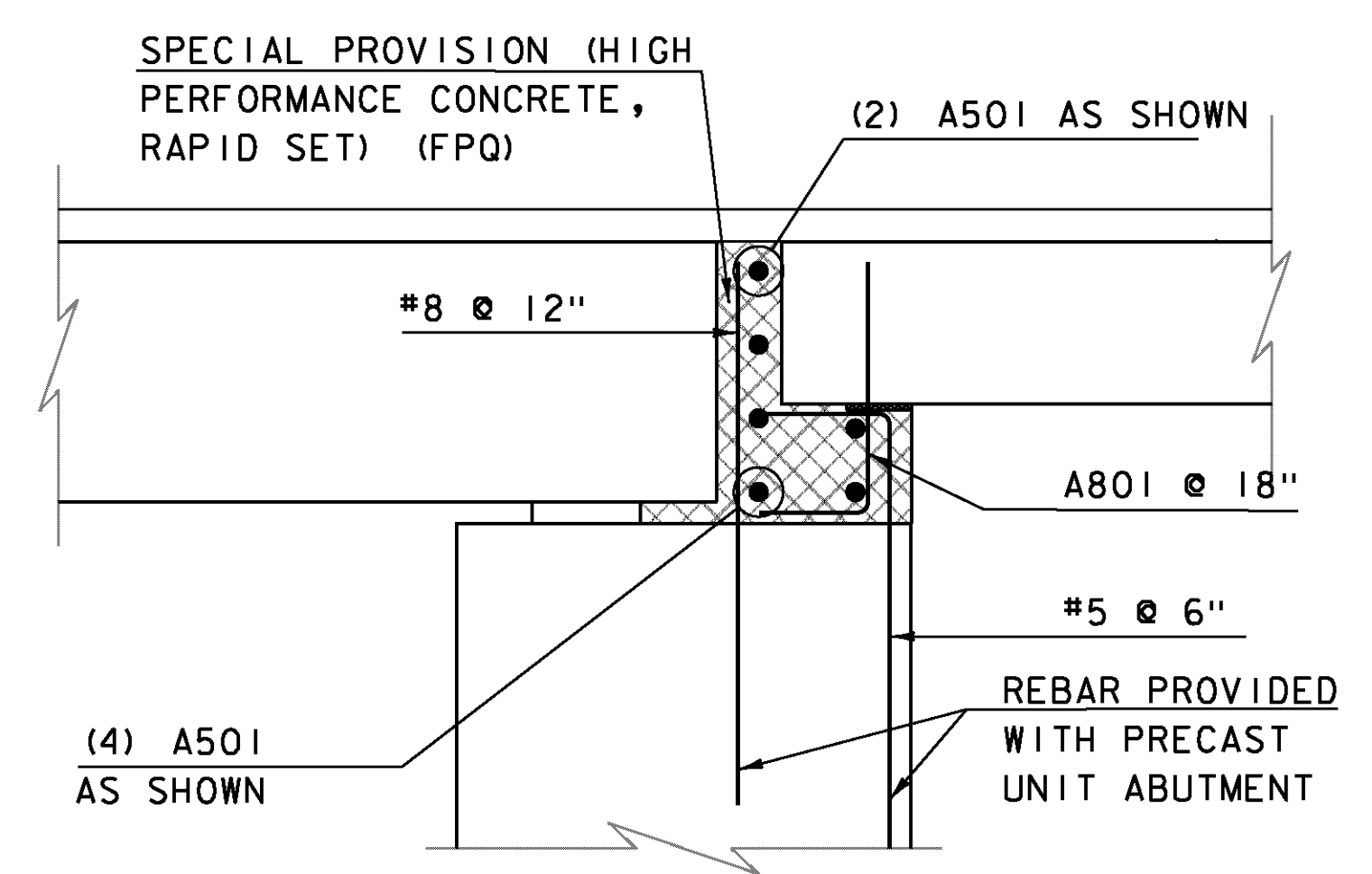


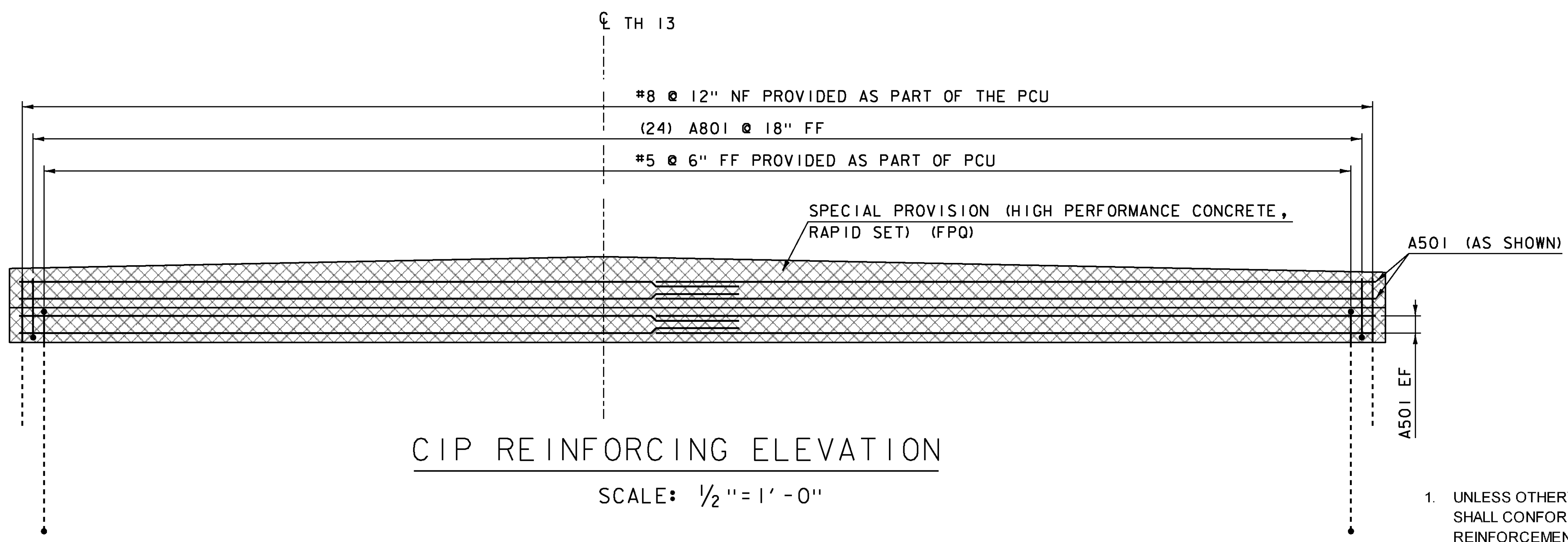
CIP REINFORCING PLAN

SCALE: 1/2" = 1' - 0"



CIP REINFORCING TYPICAL

SCALE: 3/4" = 1' - 0"



CIP REINFORCING ELEVATION

SCALE: 1/2" = 1' - 0"

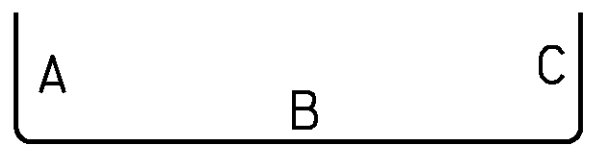
NOTE: NF=NEAR FACE
 FF=FAIR FACE
 EF=EACH FACE
 ▲=CUT TO FIT IN FIELD
 3" CLEAR, UNLESS OTHERWISE SPECIFIED ON THE PLANS.
 2'-2" BAR LAP UNLESS OTHERWISE SPECIFIED ON THE PLANS

REINFORCING STEEL NOTES

- UNLESS OTHERWISE DESIGNATED, ALL BAR REINFORCEMENT FOR CONCRETE IN SIZES UP TO AND INCLUDING NO. 18 SHALL CONFORM TO THE REQUIREMENTS OF THE "SPECIFICATIONS FOR DEFORMED BILLET-STEEL BARS FOR CONCRETE REINFORCEMENT", AASHTO M 31 (ASTMA 615-SI). ALL BARS SHALL BE GRADE 60, UNLESS OTHERWISE DESIGNATED.
- FOR TYPICAL BENDING DETAILS, RECOMMENDED PIN DIAMETER "D" OF BENDS AND HOOKS, AND OTHER STANDARD PRACTICE, SEE CURRENT CONCRETE REINFORCING STEEL INSTITUTE "MANUAL OF STANDARD PRACTICE".
- BARS WHICH REQUIRE MORE ACCURATE BENDING THAN STANDARD PRACTICES SHOULD HAVE LIMITS INDICATED.
- ALL DIMENSIONS ARE OUT TO OUT OF BAR EXCEPT "A" AND "G" ON STANDARD 180 DEGREE AND 135 DEGREE HOOKS.
- "J" DIMENSION ON 180 DEGREE HOOKS TO BE SHOWN ONLY WHERE NECESSARY TO RESTRICT HOOK SIZE. OTHERWISE, STANDARD HOOKS ARE TO BE USED.
- "H" DIMENSION ON STIRRUPS TO BE SHOWN ONLY WHEN NECESSARY TO MAINTAIN CLEARANCES.
- WHERE SLOPE DIFFERS FROM 45 DEGREES, DIMENSIONS "H" AND "K" MUST BE SHOWN.
- ▲ DENOTES BARS TO BE CUT IN FIELD.
- * DENOTES ONE EXTRA BAR ADDED FOR TESTING PURPOSES.

REINFORCING STEEL SCHEDULE

ITEM	EACH	SIZE	LENGTH	MARK	TYPE	A	B	C	D	E	F	G	H	J	K	R	O
*	13	5	18'- 10"	1A501	STR	18'- 10"											
*	25	8	3'- 0"	1A801	2	1'- 3"	1'- 9"	---									
*	13	5	18'- 10"	2A501	STR	18'- 10"											
*	25	8	3'- 0"	2A801	2	1'- 3"	1'- 9"	---									



BAR TYPE 2

PROJECT NAME: RUTLAND CITY
 PROJECT NUMBER: BRF 3000 (18)
 FILE NAME: s96j244sub.dgn PLOT DATE: 28-FEB-2014
 PROJECT LEADER: C. CARLSON DRAWN BY: M.UMBERGER
 DESIGNED BY: M. EVANS-MONGEON CHECKED BY: M. LONGSTREET
 ABUTMENT 1 & 2 REINFORCING DETAILS 2 SHEET 24 OF 44