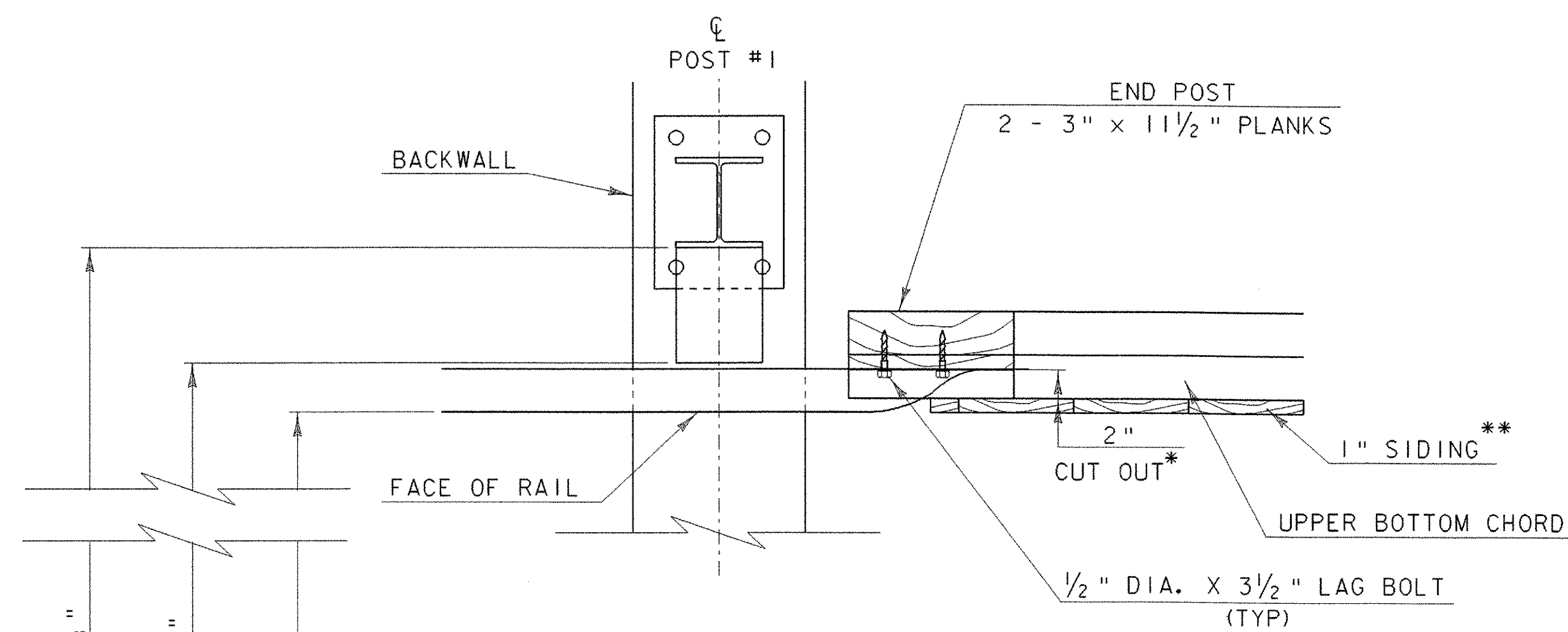


POST #1 DETAILS

SCALE 1/2" = 1'-0"

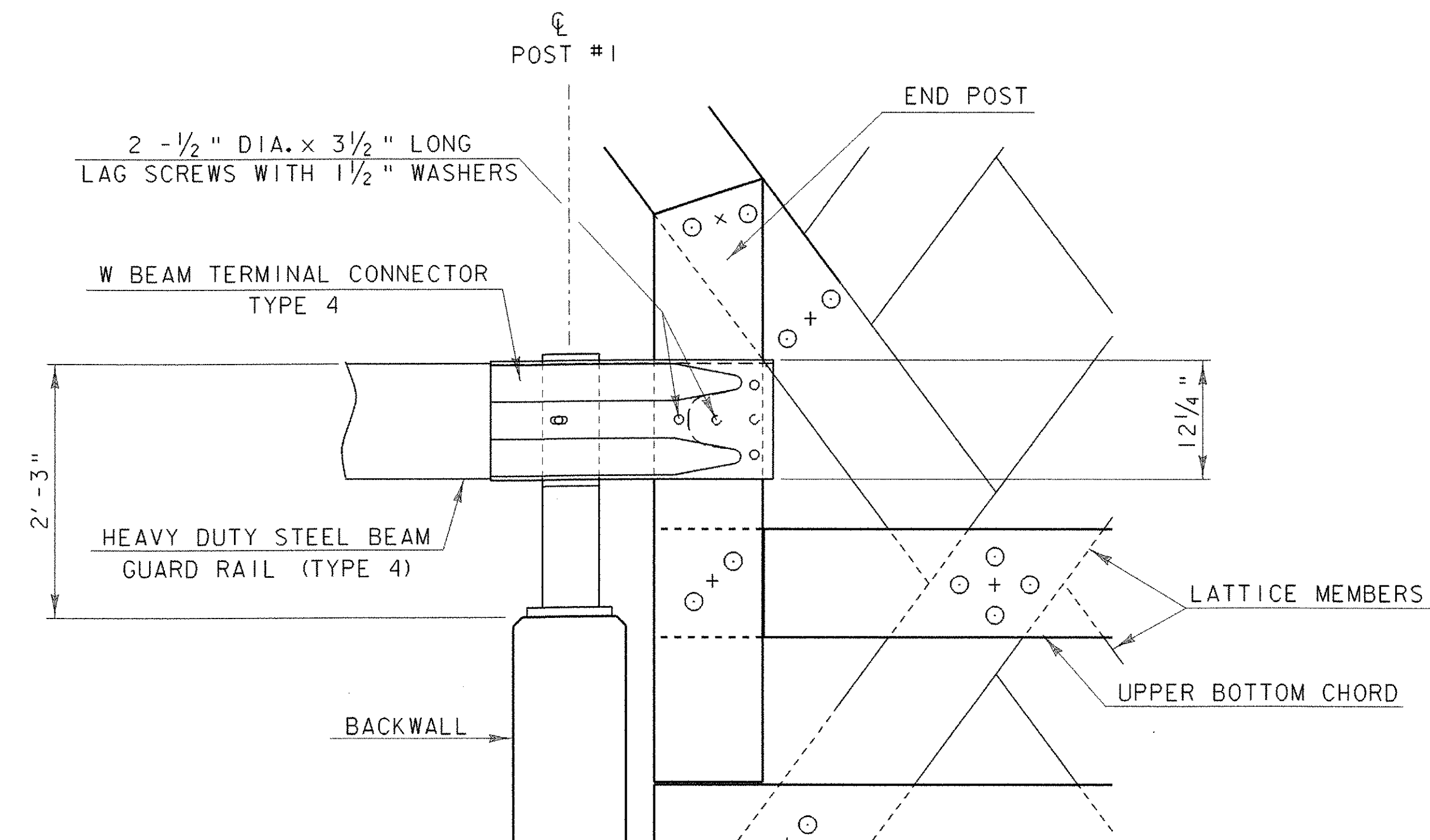
RAILING NOTES

1. ANCHOR BOLTS, NUTS, & WASHERS SHALL BE GALVANIZED PER AASHTO M232M/M232 AND SHALL CONFORM TO VAOT STANDARD SPECIFICATIONS SECTION 714.07.
2. THE FABRICATOR SHALL SUBMIT SHOP DRAWINGS, INCLUDING WELDING PROCEDURES, TO THE STRUCTURES SECTION FOR APPROVAL IN ACCORDANCE WITH THE PROVISIONS OF SECTION 506.04-SHOP DRAWINGS. ALL WELDING SHALL CONFORM WITH SECTION 506.10.
3. ALL POSTS SHALL BE SET NORMAL TO GRADE. NUTS PLACED IN CONCRETE ARE TO BE ROTATED WITHIN 24 HOURS AFTER CONCRETE IS PLACED TO BREAK BOND BETWEEN NUT AND CONCRETE. NUTS SHALL THEN BE USED TO ALIGN THE POSTS BOTH HORIZONTALLY AND VERTICALLY. AFTER FINAL POSITION HAS BEEN APPROVED ALL VOIDS BETWEEN THE BASE PLATE AND CONCRETE SURFACE SHALL BE GROUTED WITH NON-SHRINK GROUT CONFORMING WITH SECTION 707.03, MORTAR, TYPE IV.
4. ALL COMPONENTS OF POST #1 SHALL BE AASHTO M222/M222M STEEL GRADE 50.
5. OFFSET BLOCK SHALL BE WOOD 6"x8"x1'-2". SEE STANDARD G-1.
6. PAYMENT FOR POST #1 WILL BE INCLUDED IN THE PER FOOT UNIT BID PRICE FOR 621.21 "HEAVY DUTY STEEL BEAM GUARD RAIL"



**RAILING CONNECTION DETAIL
PLAN VIEW (TYP)**

SCALE 1/2" = 1'-0"



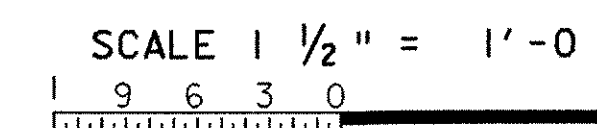
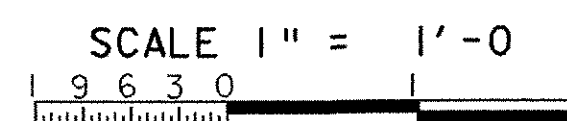
**RAILING CONNECTION DETAIL
ELEVATION VIEW (TYP)**

SCALE 1" = 1'-0"

TH 4/6

* CUT A 12 1/4" X 2" DEEP SECTION OF THE END POST AT THE LOCATION SHOWN

** COPE SIDING AROUND TERMINAL CONNECTOR AT END OF BRIDGE



PROJECT: PROCTOR - PITTSFORD	PROJECT NO. : BHO 1443 (37)
DESIGN FILE NAME: 96j242\structures\sj242erail.dgn	PLOT DATE: 10-JAN-2003
IPARM FILE NAME: sj242erail.i	DESIGNED BY: W.B. SYMONDS
SQUAD LEADER: C.P. WILLIAMS	DRAWN BY: R.S. YOUNG
RAILING DETAIL SHEET	CHECKED BY: W.B. SYMONDS
	SHEET: 38 OF 60