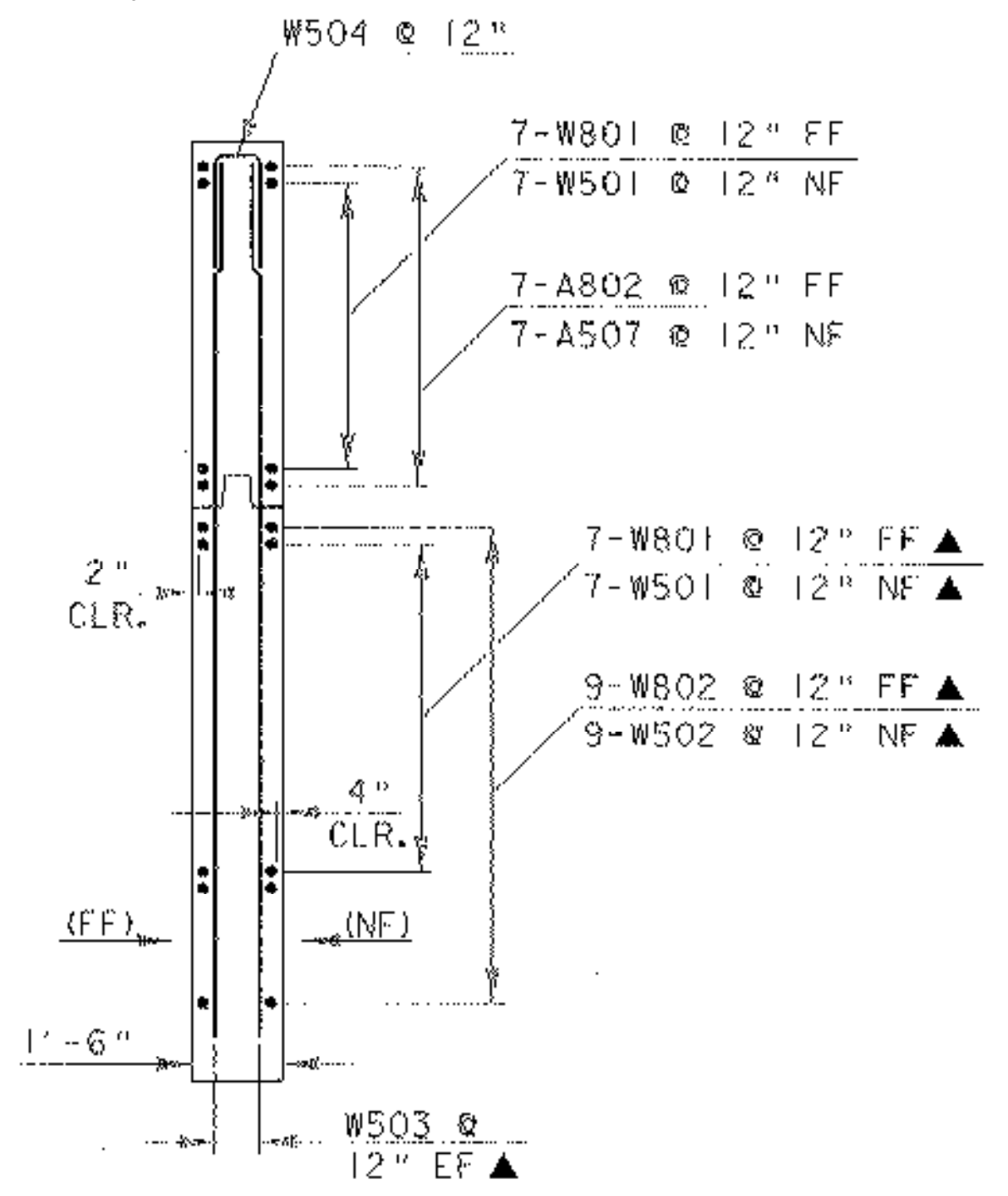


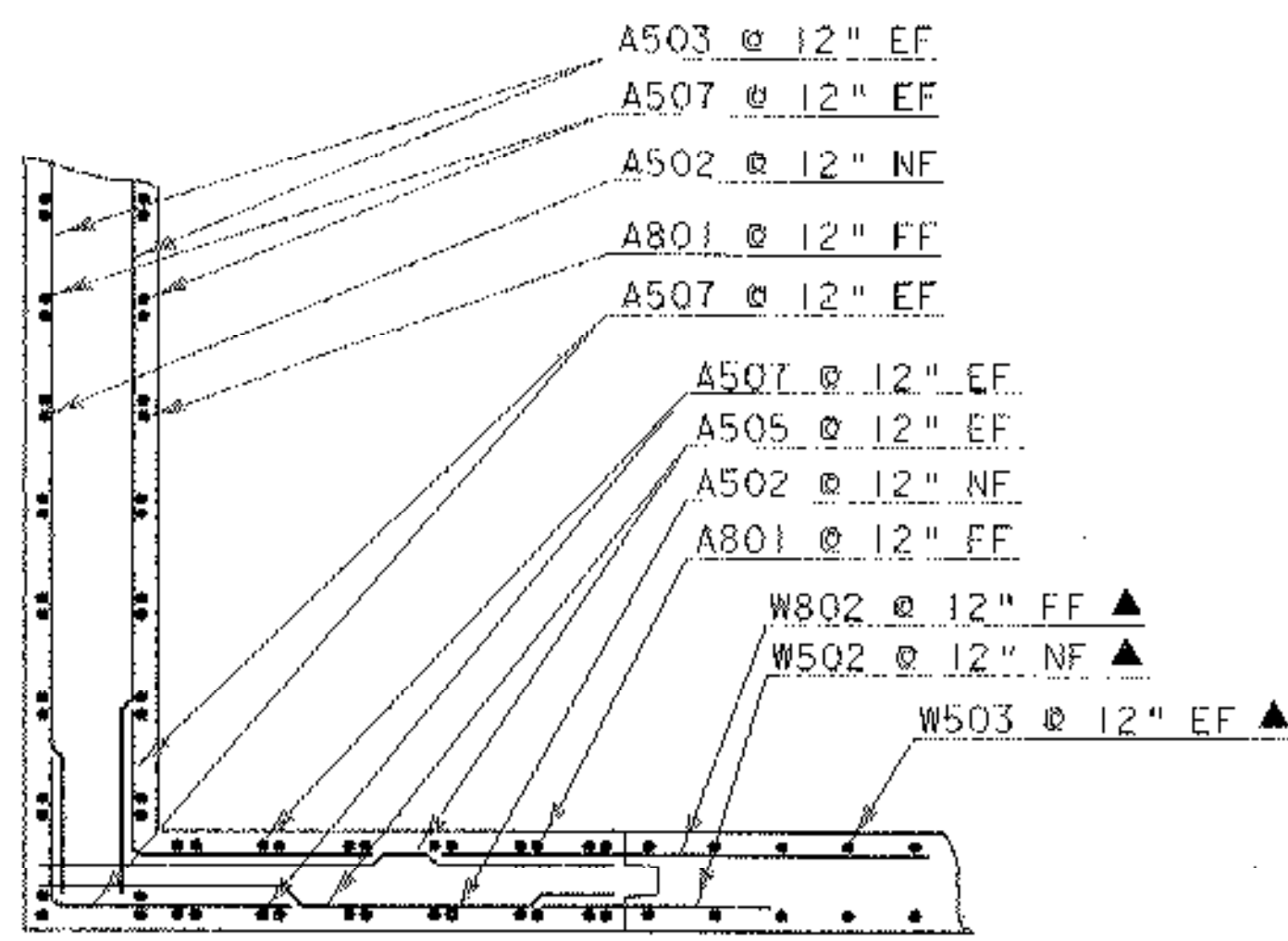
WINGWALL SECTION B - B

TYPICAL FOR ALL WW'S
(SEE SHEETS 33 & 34)
SCALE: 3/8" = 1'-0"



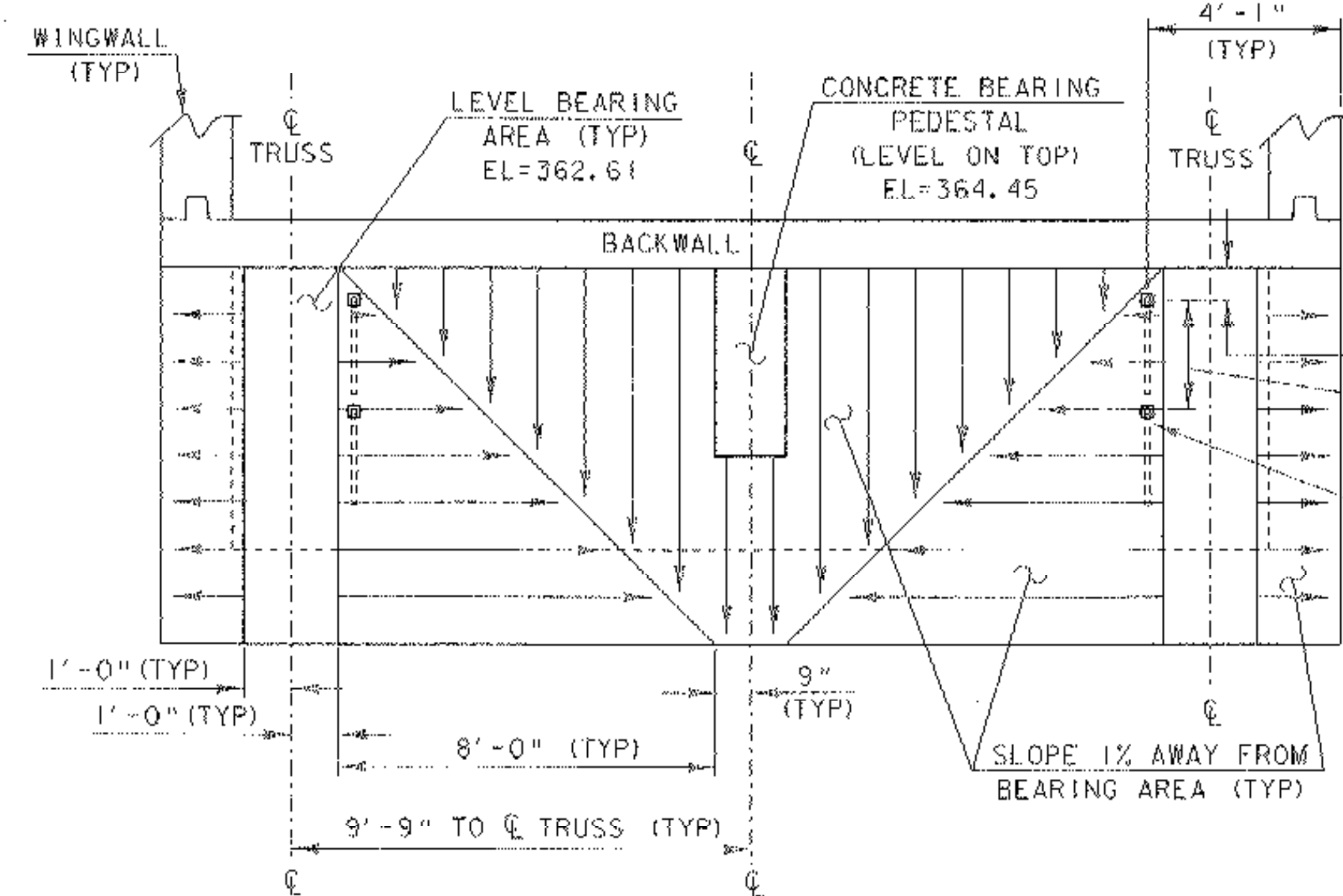
WINGWALL SECTION C - C

TYPICAL FOR ALL WW'S
(SEE SHEETS 33 & 34)
SCALE: 3/8" = 1'-0"



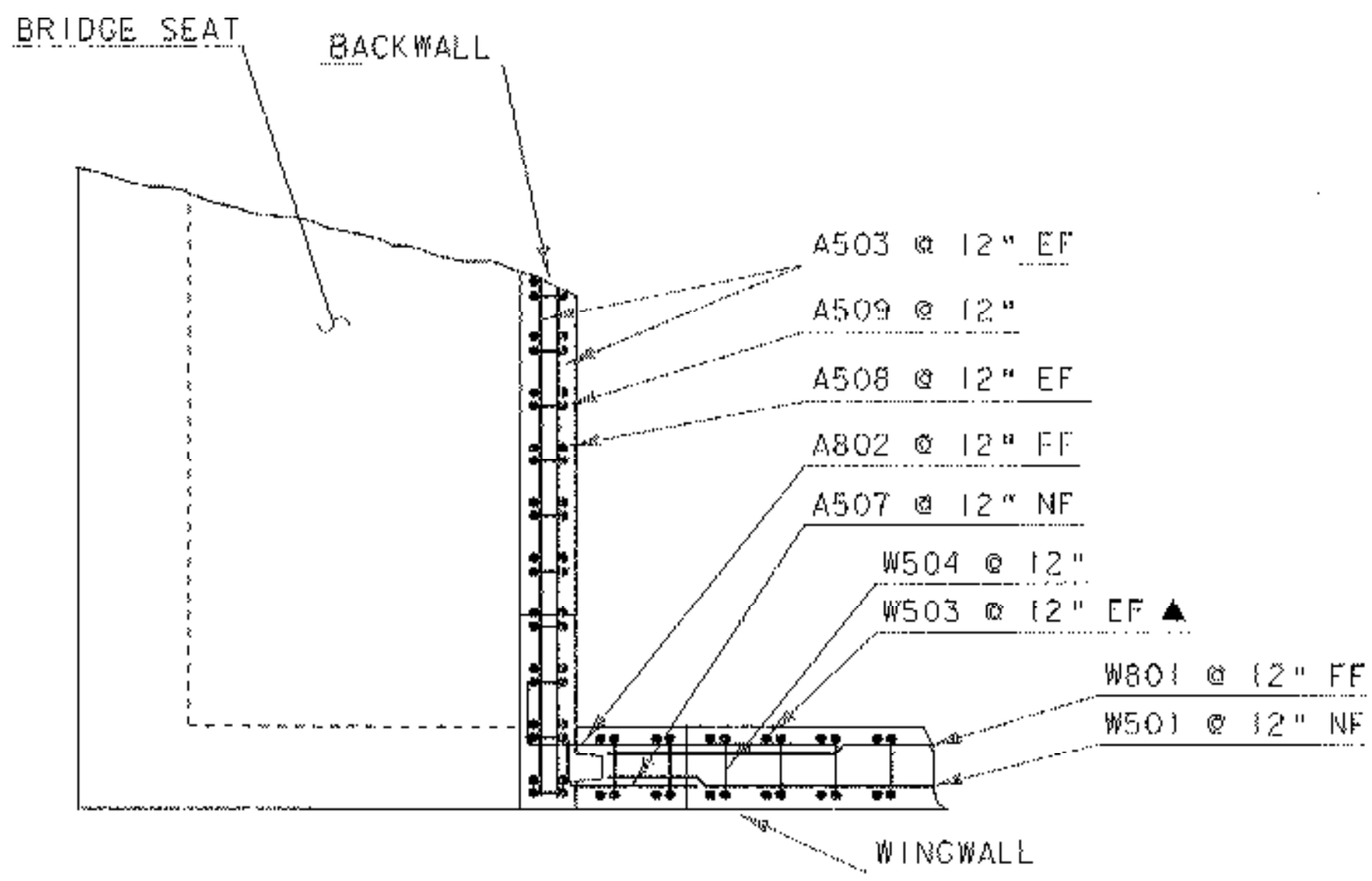
TYPICAL CORNER DETAIL TOP OF STEM

SCALE: 3/8" = 1'-0"



BRIDGE SEAT SLOPE DETAIL

SCALE: 3/8" = 1'-0"



TYPICAL CORNER DETAIL TOP OF BACKWALL

SCALE: 3/8" = 1'-0"

BRIDGE SEAT AND SETTING BAR NOTES

1. THE SURFACES OF THE BRIDGE SEAT UNDER BEARING BLOCKS SHALL BE LEVEL. ALL OF THE OTHER AREAS OF THE BRIDGE SEATS SHALL BE SLOPED AT 1% AWAY FROM BEARING BLOCKS OR TOWARD MID SPAN. THE ENTIRE BRIDGE SEAT SHALL BE GIVEN A MAGNESIUM FLOAT FINISH.
2. THE TYPICAL ABUTMENT SECTIONS SPECIFY A 4" MINIMUM CLEAR TO THE TOP MAT OF REINFORCING STEEL IN THE BRIDGE SEAT. THIS CLEAR SHALL BE MEASURED FROM THE LEVEL BEARING AREAS. IN ALL OTHER SLOPING LOCATIONS CLEARANCES SHALL NOT BE LESS THAN 3".

NOTE:

NF = NEAR FACE
FF = FAR FACE
EF = EACH FACE
▲ = CUT TO FIT IN FIELD
ALL LAPS SHALL BE 2'-2" UNLESS OTHERWISE DETAILED

SCALE 3/8" = 1'-0"
1 0 1 2 3 4

PROJECT: PROCTOR - PITTSFORD	PROJECT NO.: BHO 1443 (37)
DESIGN FILE NAME: 96J242\Structures\sj242esub.dgn	PLOT DATE: 10-JAN-2003
IPARM FILE NAME: sj242esubmisc.i	DRAWN BY: T. ANDERSON
DESIGNED BY: W.B. SYMONDS	CHECKED BY: W.B. SYMONDS
SQUAD LEADER: C.P. WILLIAMS	MISCELLANEOUS WINGWALL DETAILS
	SHEET: 35 OF 60