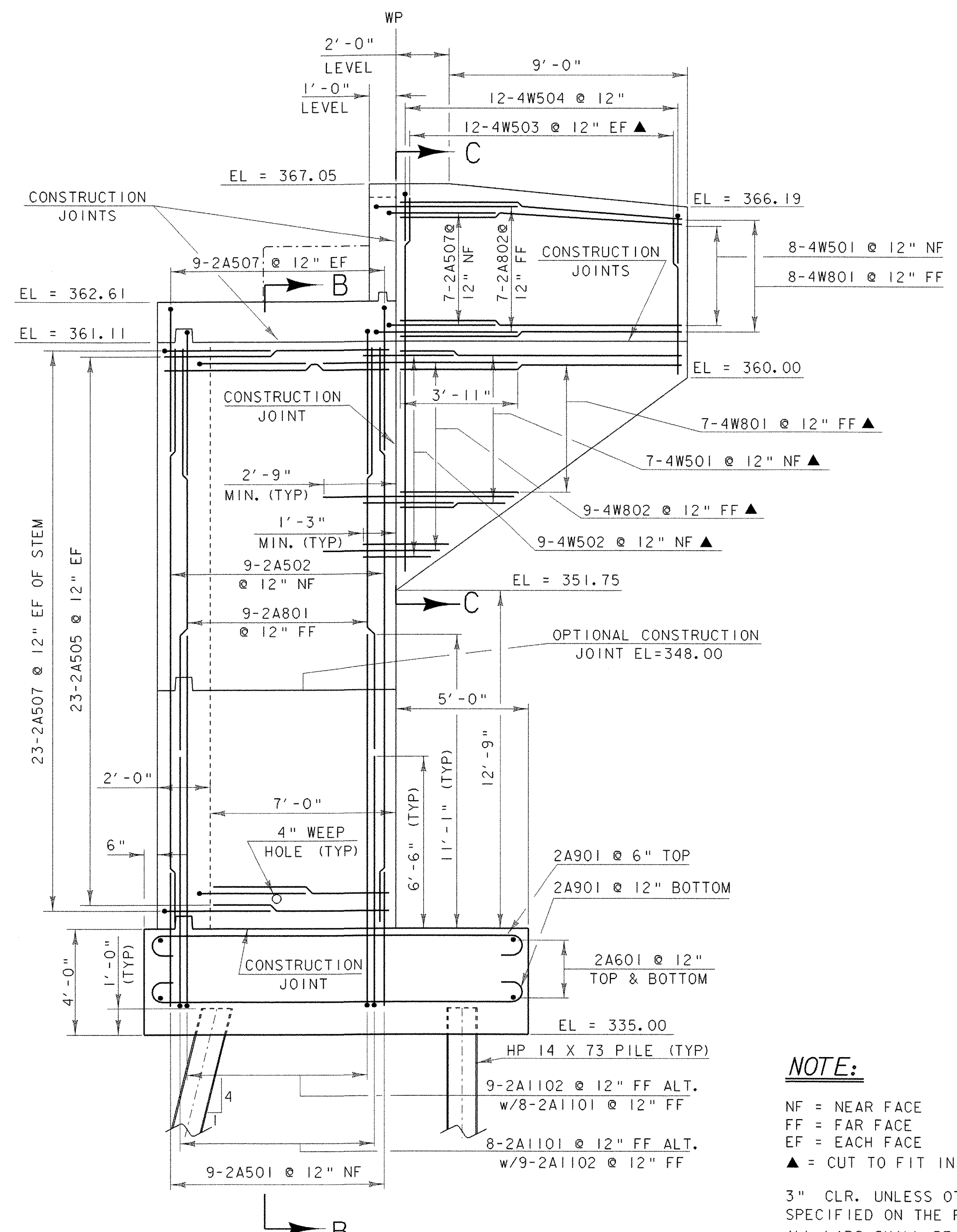


WINGWALL #3 ELEVATION

SCALE: 3/8" = 1'-0"

WINGWALL NOTES

1. ABUTMENT STEM BARS AND BRIDGE SEAT BARS NOT SHOWN FOR CLAIRTY
2. SEE SHEET 35 FOR TYPICAL CORNER DETAILS AND SECTIONS B-B AND C-C
3. SEE SHEET 36 AND 37 FOR FORM LINER AND COLORED CONCRETE REQUIREMENTS.



WINGWALL #4 ELEVATION

SCALE: 3/8" = 1'-0"

SCALE 3/8" = 1'-0"
1 0 1 2 3 4

NOTE:

- NF = NEAR FACE
- FF = FAR FACE
- EF = EACH FACE
- ▲ = CUT TO FIT IN FIELD
- 3" CLR. UNLESS OTHERWISE SPECIFIED ON THE PLANS
- ALL LAPS SHALL BE 2'-2" UNLESS OTHERWISE DETAILED

PROJECT: PROCTOR - PITTSFORD	PROJECT NO.: BHO 1443 (37)
DESIGN FILE NAME: 96J242\Structures\sj242esub.dgn	PLOT DATE: 10-JAN-2003
IPARM FILE NAME: sj242eww1v2	DESIGNED BY: W.B. SYMONDS
SQUAD LEADER: C.P. WILLIAMS	DRAWN BY: T. ANDERSON
WINGWALL 3 & 4 ELEVATIONS	CHECKED BY: W.B. SYMONDS
	SHEET: 34 OF 60