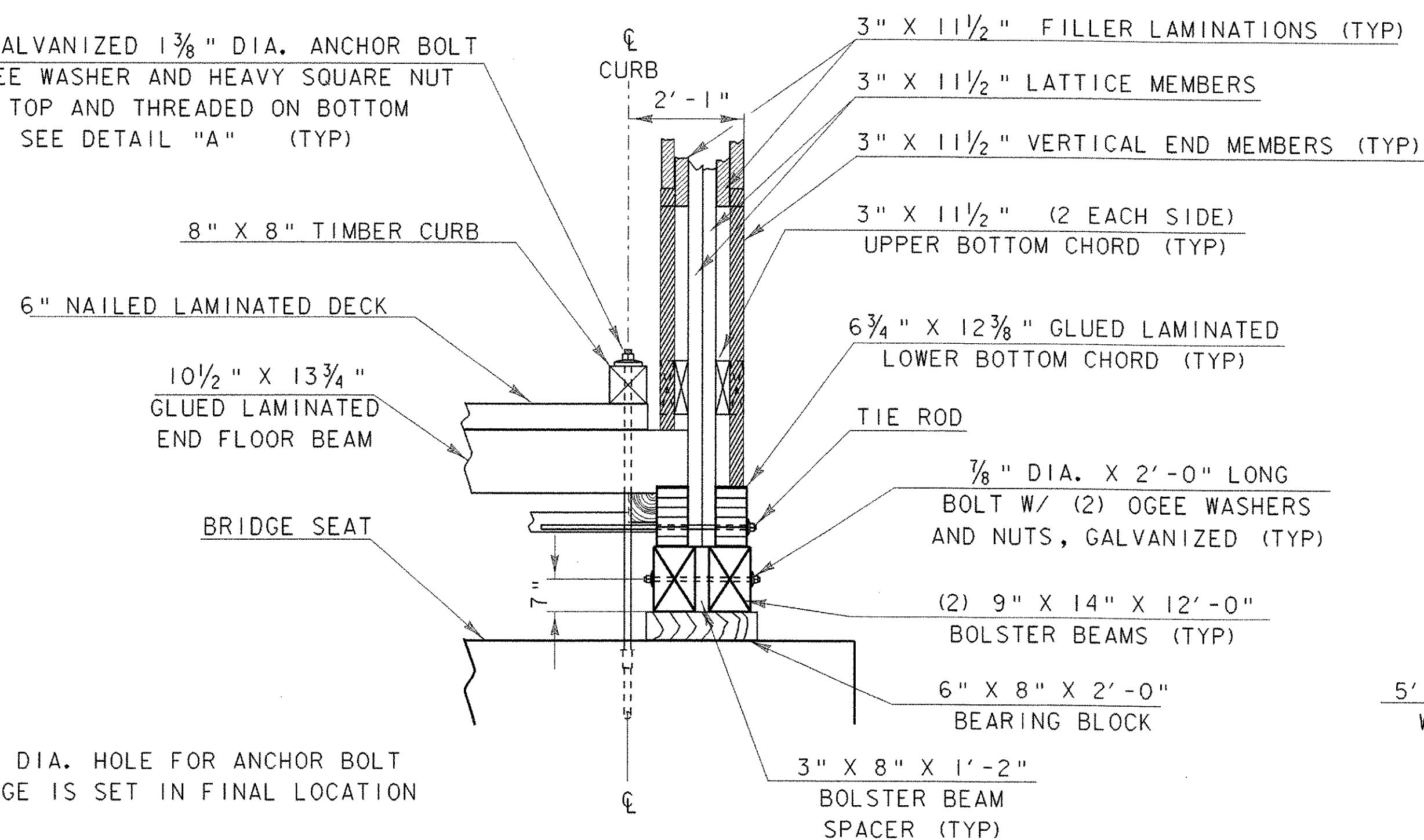


\* 5'-6" GALVANIZED 1 3/8" DIA. ANCHOR BOLT  
W/ OGEE WASHER AND HEAVY SQUARE NUT  
ON TOP AND THREADED ON BOTTOM  
SEE DETAIL "A" (TYP)

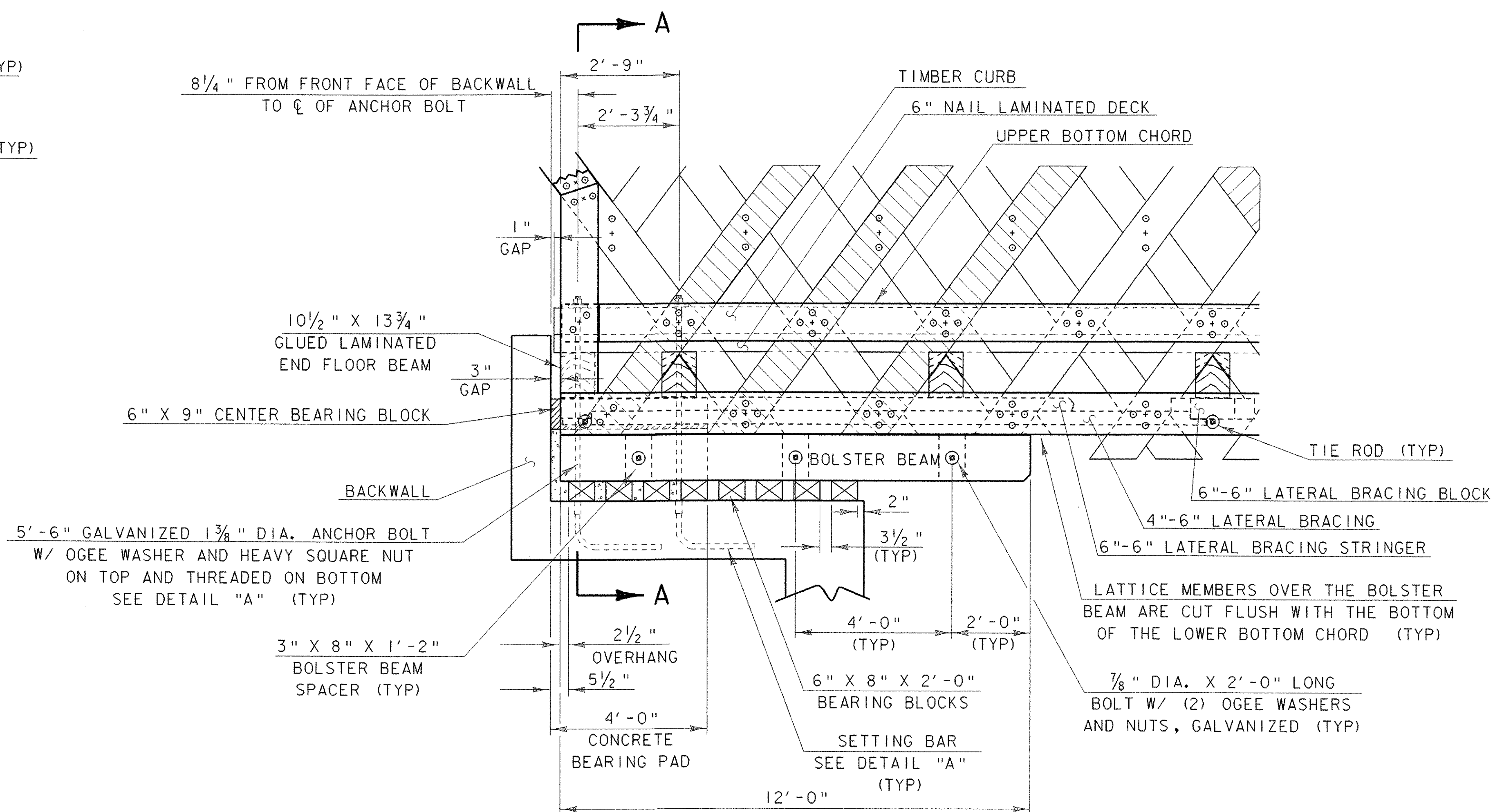


**SECTION A-A**  
AT RIGHT SIDE OF BRIDGE  
SCALE 1/2" = 1'-0

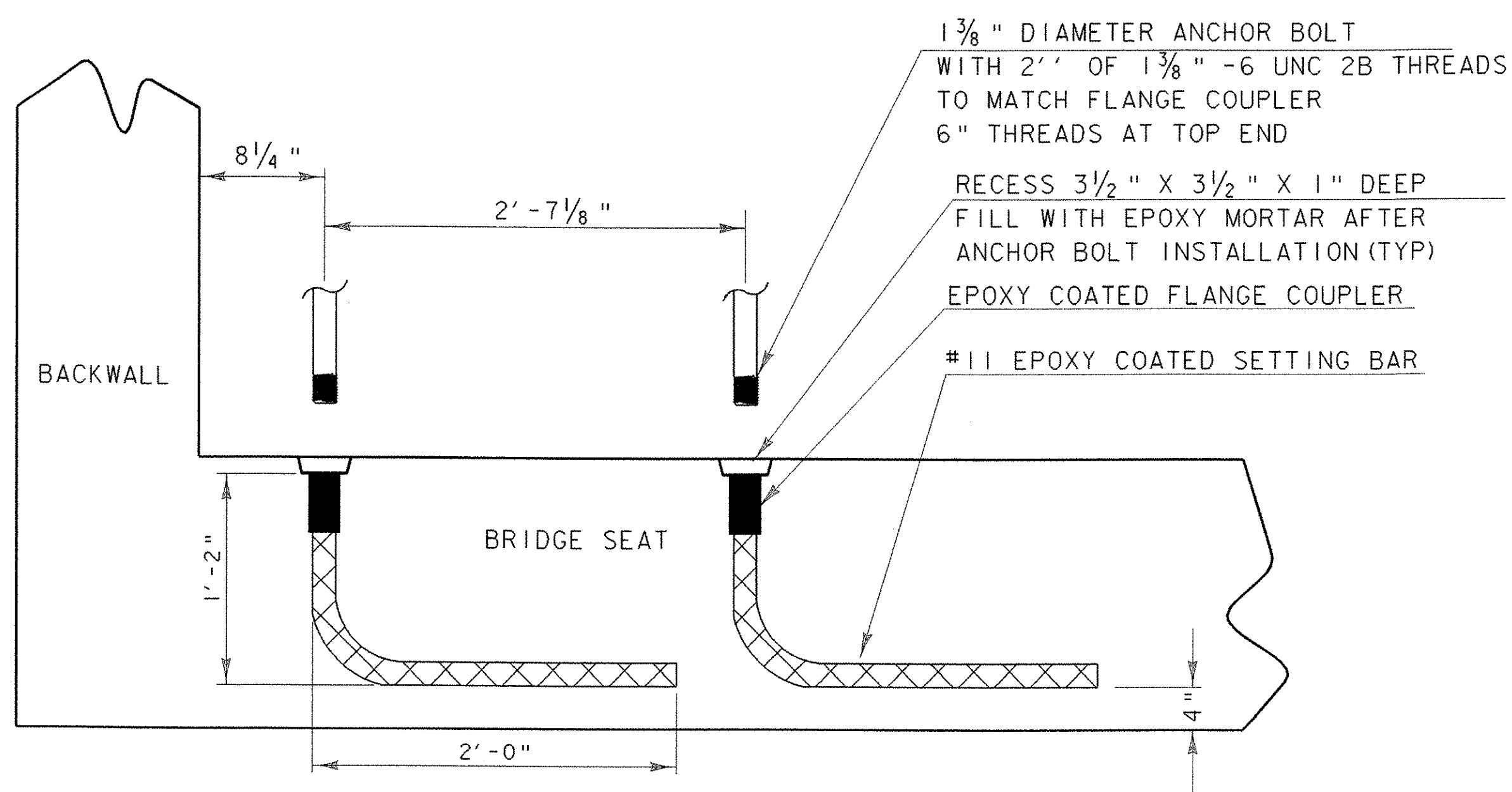
\* DRILL A 2" DIA. HOLE FOR ANCHOR BOLT  
AFTER BRIDGE IS SET IN FINAL LOCATION

**BEARING NOTES**

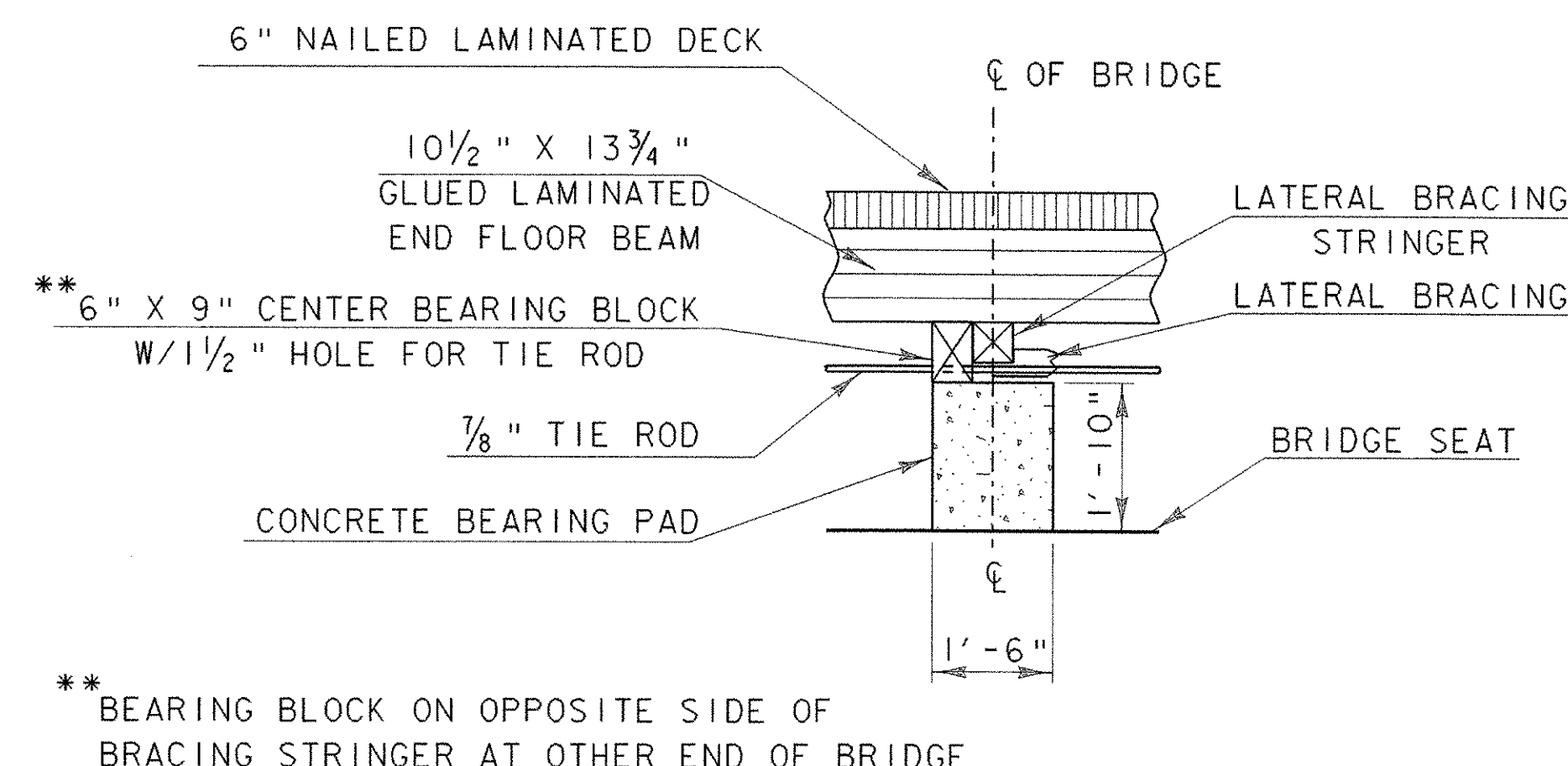
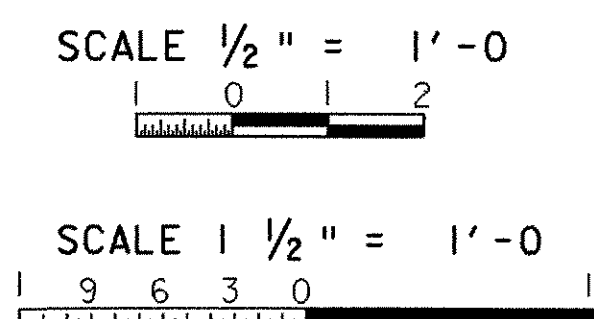
1. THE BEARING BLOCK SIZES GIVEN ARE APPROXIMATE AND SHALL BE PROVIDED SUCH THAT THE FINISHED GRADE CAN BE ACHIEVED. THE BEARING BLOCKS MAY HAVE TO BE SLIGHTLY THICKER, THINNER, OR TAPERED TO FIT THE FINAL SUPERSTRUCTURE DEPTH AND CAMBER. THE BOLSTER BEAM SHALL FOLLOW THE CAMBER OF AND FIT TIGHT TO THE LOWER BOTTOM CHORD. THE CENTER BEARING BLOCK SHALL FIT TIGHT TO THE FLOOR BEAMS IT SUPPORTS.
2. THE BOLSTER BEAM SHALL BE ROUGH, FULL-SAWN SOUTHERN YELLOW PINE NO. 1 GRADE. THESE MEMBERS SHALL BE PRESSURE TREATED WITH A TYPE III (PENTACHLOROPHENOL W/ LIGHT OIL) PRESERVATIVE PER SECTION 726 OF THE SPECIAL PROVISIONS.
3. THE BEARING BLOCKS SHALL BE ROUGH, FULL-SAWN SOUTHERN YELLOW PINE NO. 1 GRADE. THESE MEMBERS SHALL BE PRESSURE TREATED WITH A TYPE III (PENTACHLOROPHENOL W/ LIGHT OIL) PRESERVATIVE PER SECTION 726 OF THE SPECIAL PROVISIONS.
4. THE BOLSTER BEAM, BEARING BLOCKS, ANCHOR BOLTS, SETTING BARS, FLANGE COUPLERS AND ALL OTHER RELATED HARDWARE SHALL BE PAID UNDER THE ITEM 531.10 "BEARING DEVICE ASSEMBLY (MOD)". THIS ITEM SHALL BE FULL COMPENSATION FOR FURNISHING AND INSTALLING THE BEARING BLOCKS, BOLSTER BEAMS AND ANCHOR BOLTS AT EACH END OF THE BRIDGE.
5. THE ANCHOR BOLT SHALL BE INSTALLED INTO THE FLANGE COUPLER AFTER THE BRIDGE HAS BEEN SET AT THE FINAL LOCATION. THE RECESS ABOVE THE FLANGE COUPLER SHALL BE FILLED WITH EPOXY MORTAR. THE CONTRACTOR SHALL PROVIDE THE RESIDENT ENGINEER WITH A COPY OF THE TECHNICAL DATA SHEET FOR THE EPOXY MORTAR, WHICH DETAILS THE PRODUCT SPECIFICATIONS AND MANUFACTURERS APPLICATION INSTRUCTIONS. THE COST OF THE EPOXY MORTAR SHALL BE SUBSIDIARY TO THE ITEM 531.10 "BEARING DEVICE ASSEMBLY (MOD)". THE EPOXY MORTAR SHALL MEET THE REQUIREMENTS OF SECTION 719.01 OF THE VAOT STANDARD SPECIFICATIONS FOR CONSTRUCTION.
6. THE ANCHOR BOLTS SHALL BE GALVANIZED PER AASHTO M 232M/M 232 AND SHALL BE PROVIDED PER SECTION 714.08 OF THE VAOT STANDARD SPECIFICATIONS FOR CONSTRUCTION EXCEPT THE ANCHOR BOLTS SHALL MEET THE REQUIREMENTS OF A 307 GR. C.



**END BRIDGE DETAIL**  
SCALE 1/2" = 1'-0



**DETAIL "A"**  
**SETTING BAR DETAIL**  
SCALE 1/2" = 1'-0



**SECTION A-A**  
AT CENTER OF BRIDGE  
SCALE 1/2" = 1'-0

\*\* BEARING BLOCK ON OPPOSITE SIDE OF  
BRACING STRINGER AT OTHER END OF BRIDGE

PROJECT: <b>PROCTOR - PITTSFORD</b>	PROJECT NO.: <b>BHO 1443 (37)</b>
DESIGN FILE NAME: 96j242\Structures\sj242eenddetail.dgn	PLOT DATE: 10-JAN-2003
IPARM FILE NAME: sj242eenddet.i	DESIGNED BY: W.B. SYMONDS
DESIGNED BY: W.B. SYMONDS	DRAWN BY: T. ANDERSON
SQUAD LEADER: C.P. WILLIAMS	CHECKED BY: W.B. SYMONDS
END OF BRIDGE DETAIL	SHEET: 29 OF 60