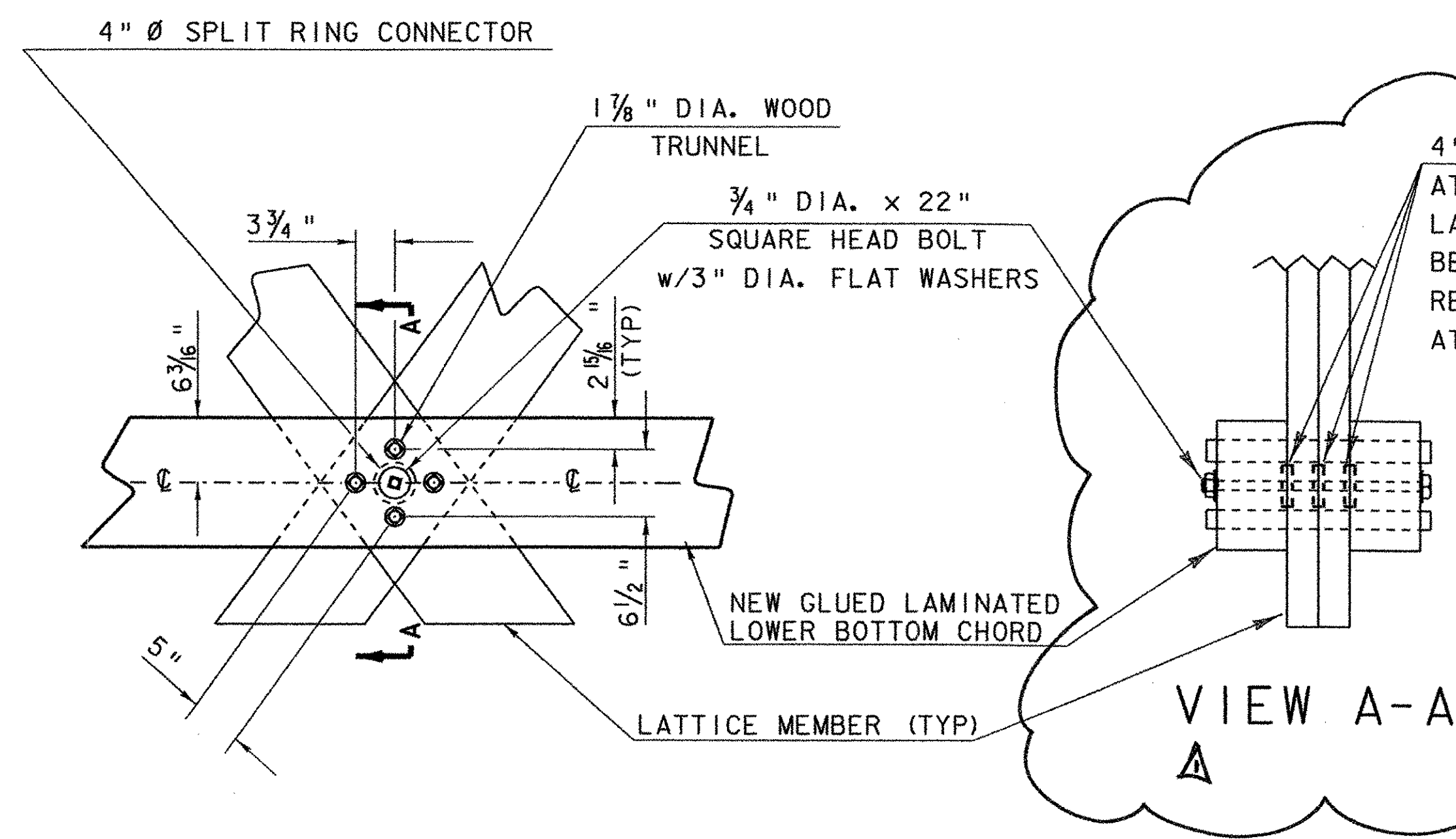


LOWER BOTTOM CHORD
(PLAN VIEW)

(TYPICAL BOTH SIDES OF THE BRIDGE)
SCALE: 3/8" = 1'-0" (HORIZONTAL)
SCALE: 1" = 1'-0" (VERTICAL)



TYPICAL LATTICE CONNECTION
(LOWER BOTTOM CHORD -- 4 TRUNNEL CONNECTION w/ BOLT)

SCALE: 1" = 1'-0"

4" Ø SPLIT RING CONNECTOR
AT EACH INTERFACE, IF EXISTING LATTICE MEMBERS ARE NOT DISTURBED BECAUSE THEY DO NOT REQUIRE REPAIR OMIT THE CENTER CONNECTOR AT THAT LOCATION

LOWER BOTTOM CHORD NOTES

1. THE ENTIRE EXISTING LOWER CHORD ON BOTH TRUSSES SHALL BE REPLACED WITH CONTINUOUS GLUE LAMINATED CHORDS.
2. THE GLUE LAMINATED CHORDS SHALL BE SOUTHERN YELLOW PINE COMBINATION 48. THE GLUE LAMINATED MEMBERS SHALL BE PRESSURE TREATED WITH A TYPE III (PENTACHLOROPHENAL w/ LIGHT OIL) PRESERVATIVE PER SECTION 726 OF THE SPECIAL PROVISIONS. THE MEMBERS MAY BE TREATED AFTER FABRICATION OR INDIVIDUAL LAMINATIONS MAY BE TREATED PRIOR TO FABRICATION.
3. THE TYPICAL LOWER BOTTOM CHORD CONNECTION WITH THE LATTICE MEMBERS IS WITH (4) - 1 1/8" Ø TRUNNELS AND 4" Ø SPLIT RING CONNECTORS WITH A 3/4" Ø BOLT. CONNECTIONS TO THE NEW CHORD SHALL BE CONSISTENT WITH THE EXISTING CONFIGURATION.
4. TIMBER FOR THE NEW LOWER BOTTOM CHORD SHALL BE PAID FOR UNDER THE ITEM 522.40 "STRUCTURAL GLUE LAMINATED TIMBER (BOTTOM CHORD)".

ADDENDUM #1

SCALE 1" = 1'-0"
1 9 6 3 0 1 2

PROJECT: PROCTOR - PITTSFORD	PROJECT NO.: BHO 1443 (37)
DESIGN FILE NAME: 96j242\Structures\sj242etrussdet.dgn	PLOT DATE: 03-FEB-2003
IPARM FILE NAME: sj242ecordet3.i	DRAWN BY: T. ANDERSON
DESIGNED BY: W. B. SYMONDS	CHECKED BY: W. B. SYMONDS
SQUAD LEADER: C. P. WILLIAMS	SHEET: 19 OF 60
LOWER BOTTOM CHORD SHEET	