

GPS CONTROL POINTS

HVCTRL # 1

STANDARD DISK STAMPED

Godette

N = 427684.05
E = 1501972.95
ELEV. = 380.70

DESCRIBED BY VERMONT GEODETIC SURVEY 1997 (AGM)
GENERAL LOCATION, PITTSFORD, VT. TO REACH FROM THE INTERSECTION OF U.S. ROUTE 7 AND VT ROUTE 3 AT THE SOUTH END OF PITTSFORD VILLAGE GO SOUTH ALONG VT ROUTE 3 FOR 2.0 MI (3.2 KM) TO THE INTERSECTION OF GORHAM BRIDGE ROAD RIGHT. CONTINUE STRAIGHT AHEAD AND GO SOUTH ALONG VT ROUTE 3 FOR 0.4 MI (0.6 KM) TO THE SITE OF MARK ON THE LEFT. THE MARK IS SET 3 CM BELOW GROUND SURFACE IN THE TOP OF A 30 CM DIAMETER CONCRETE MONUMENT. IT IS 7.0 M (23.0 FT) SOUTHEAST OF THE CENTERLINE OF VT ROUTE 3, 9.3 M (30.5 FT) NORTHWEST OF THE CENTERLINE OF A GRAVEL DRIVE, 1.6 M (5.2 FT) SOUTHWEST OF A WOOD RAIL FENCE, AND 13.7 M (44.9 FT) EAST OF POLE NO. 355A/75 AND A FIBERGLASS WITNESS POST.

HVCTRL # 2

STANDARD DISK STAMPED

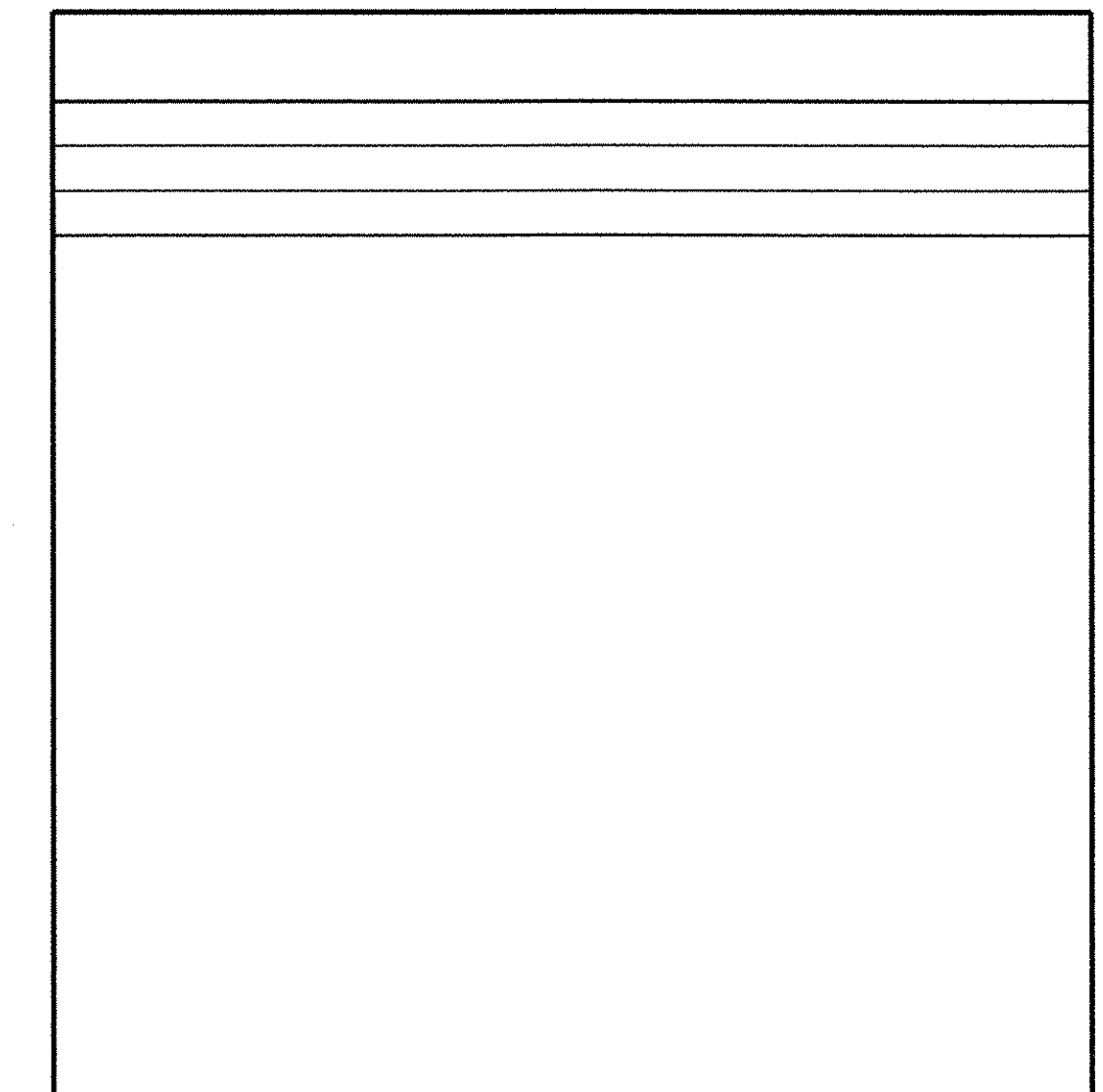
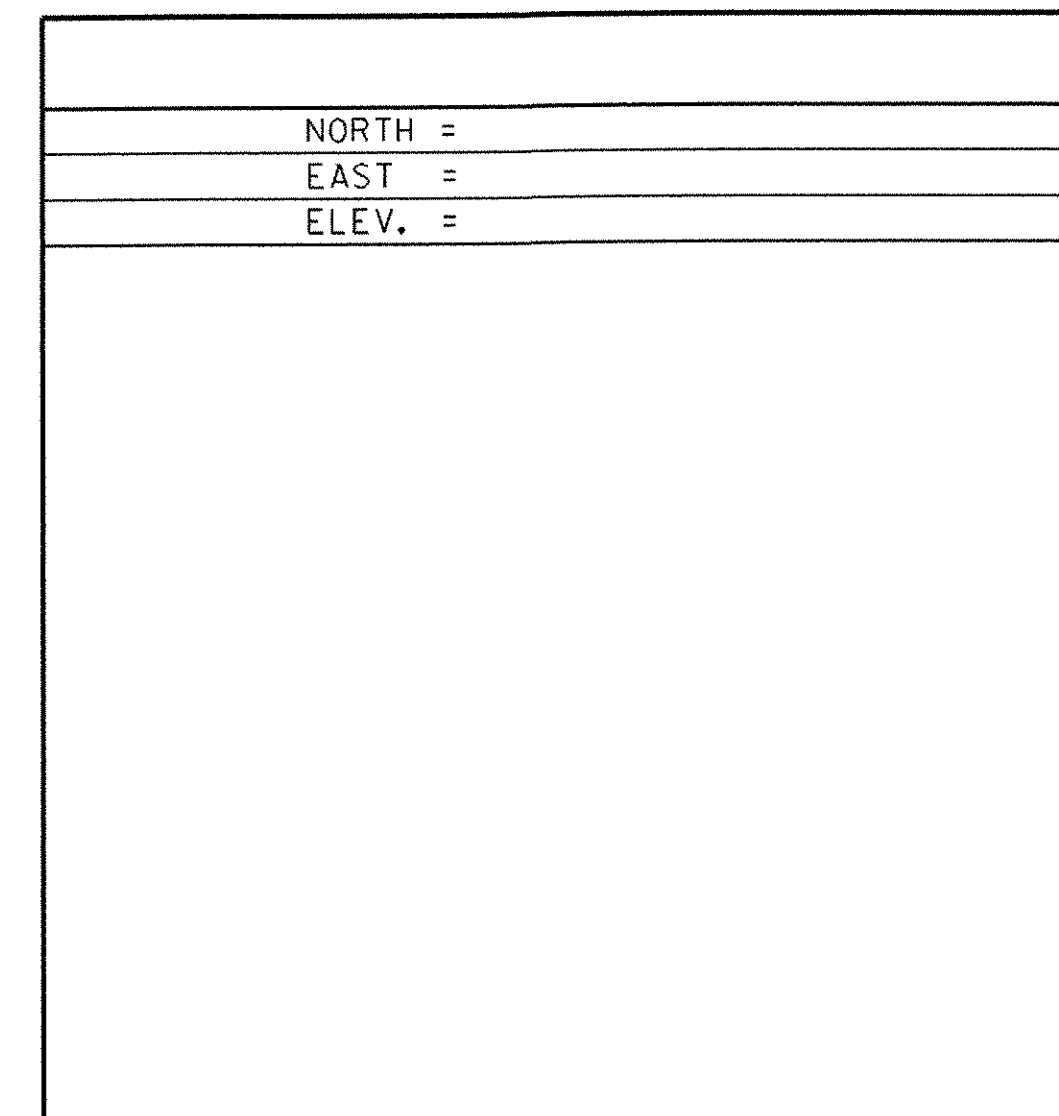
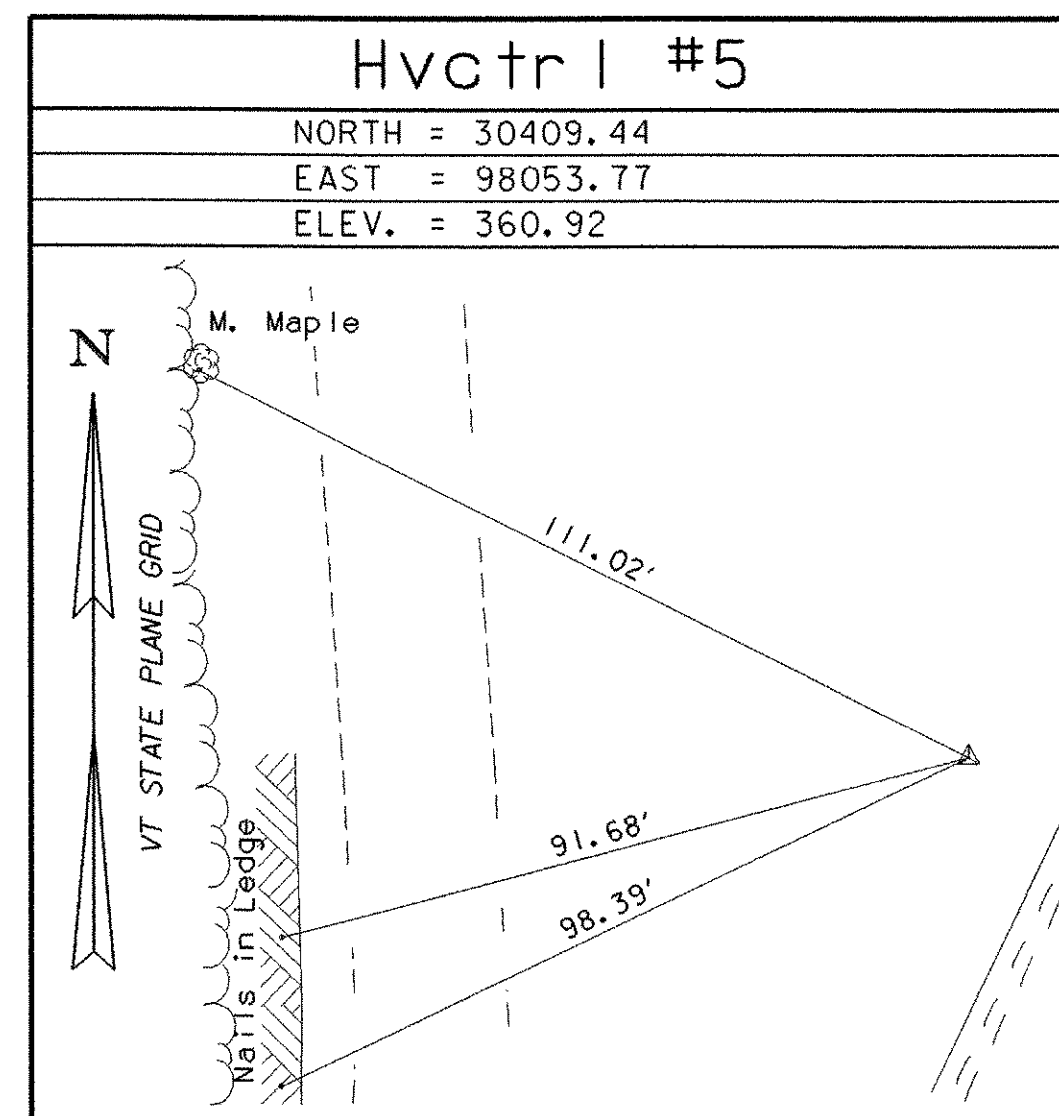
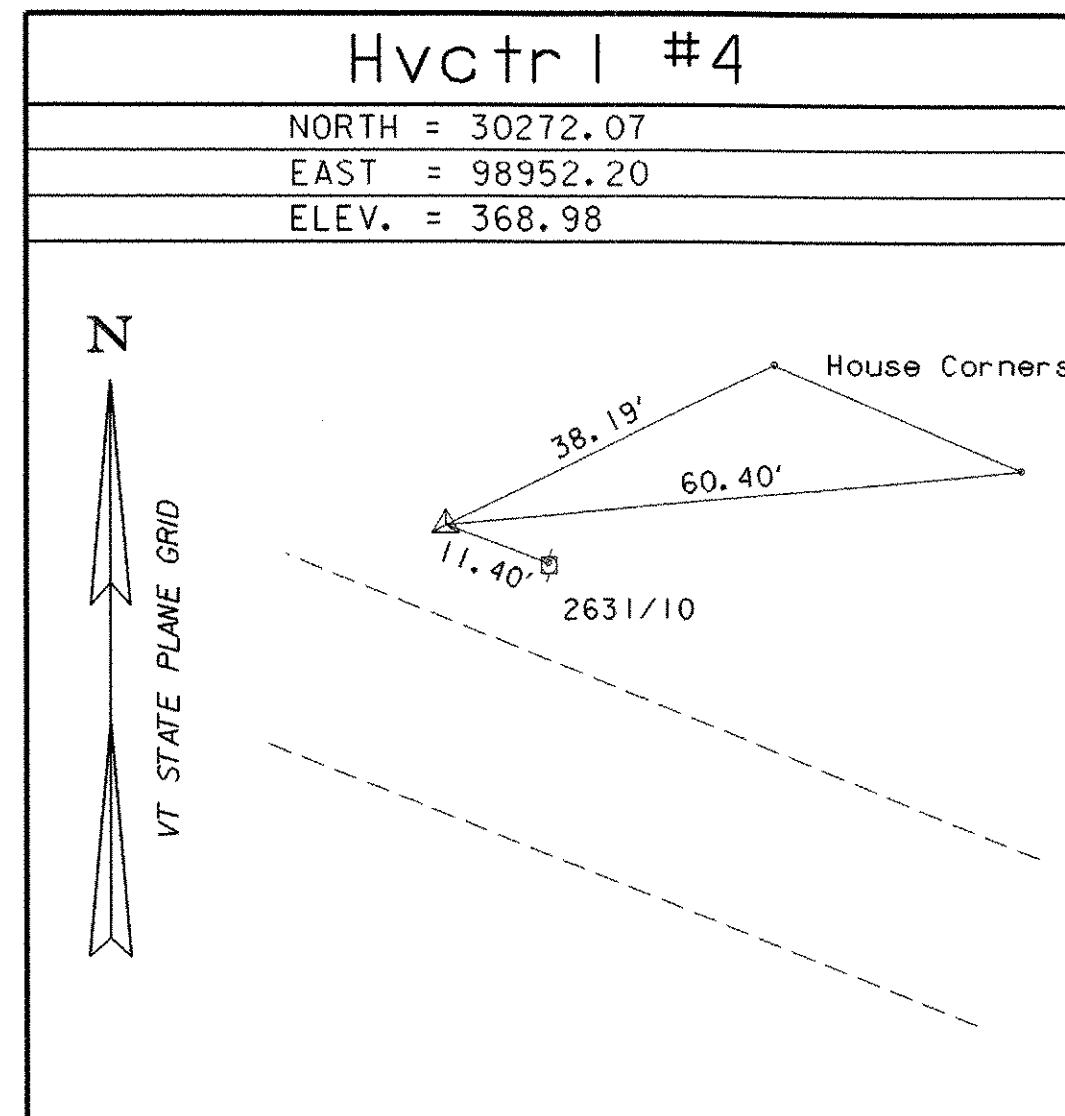
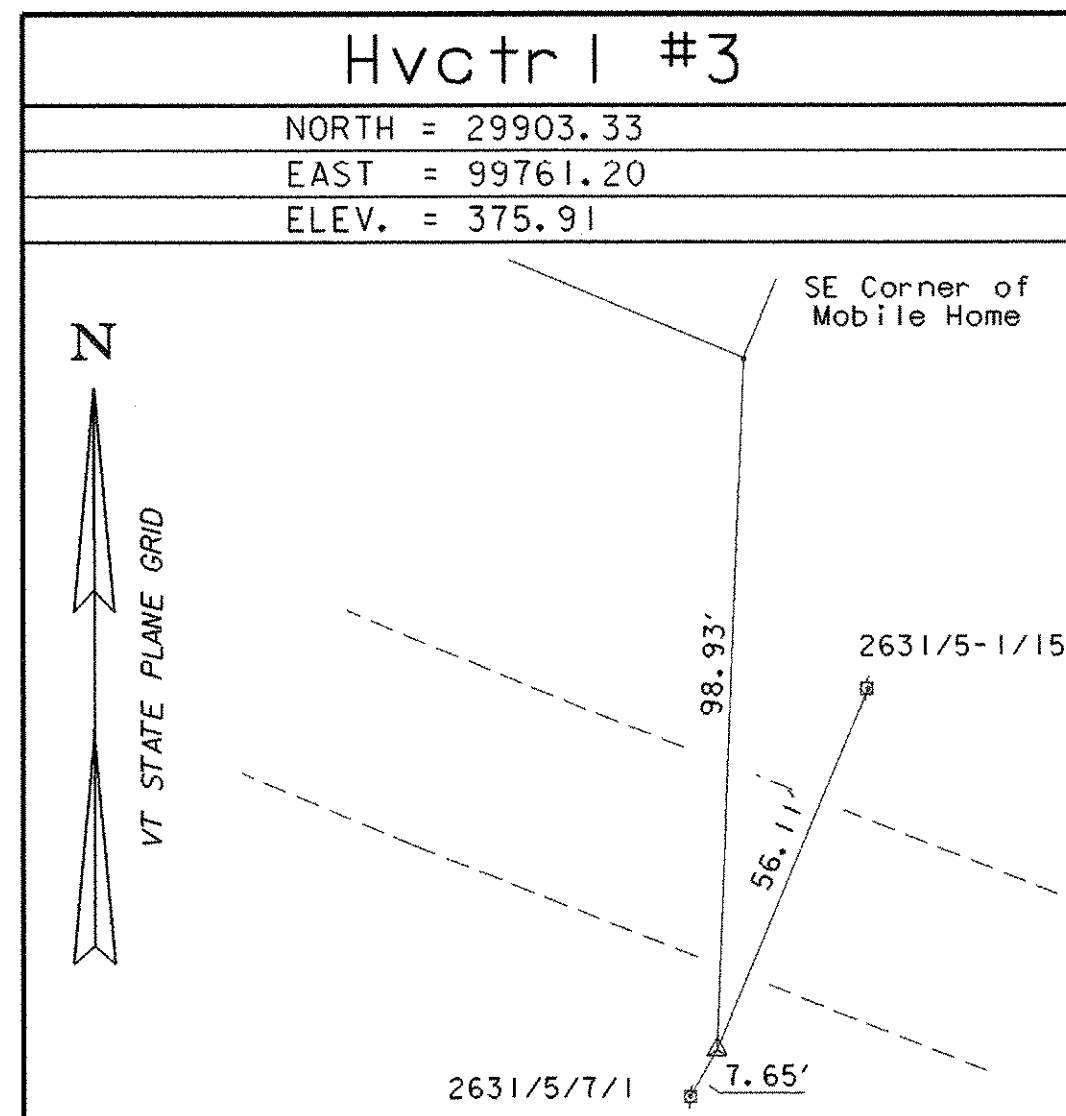
Godette Az Mk

N = 429620.22
E = 1500602.678
ELEV. = 380.70

DESCRIBED BY VERMONT GEODETIC SURVEY 1997 (AGM)
GENERAL LOCATION, PITTSFORD, VT. TO REACH FROM THE INTERSECTION OF U.S. ROUTE 7 AND VT ROUTE 3 AT THE SOUTH END OF PITTSFORD VILLAGE GO SOUTH ALONG VT ROUTE 3 FOR 2.0 MI (3.2 KM) TO THE INTERSECTION OF GORHAM BRIDGE ROAD RIGHT AND THE MARK ON THE RIGHT IN THE SOUTHWEST QUADRANT OF THE INTERSECTION. THE MARK IS SET 3 CM BELOW GROUND SURFACE IN THE TOP OF A 30 CM DIAMETER CONCRETE MONUMENT. IT IS 17.9 M (58.7 FT) WEST OF THE CENTERLINE OF VT ROUTE 3, 7.0 M (23.0 FT) SOUTH OF THE CENTERLINE OF GORHAM BRIDGE ROAD, 5.6 M (18.4 FT) NORTH OF THE CENTERLINE OF A PAVED DRIVE, 15.6 M (51.2 FT) NORTH OF THE NORTHEAST CORNER OF A HOUSE, AND 7.5 M (24.6 FT) EAST OF POLE NO. 2631/1/25T/7-1/59 AND A FIBERGLASS WITNESS POST.

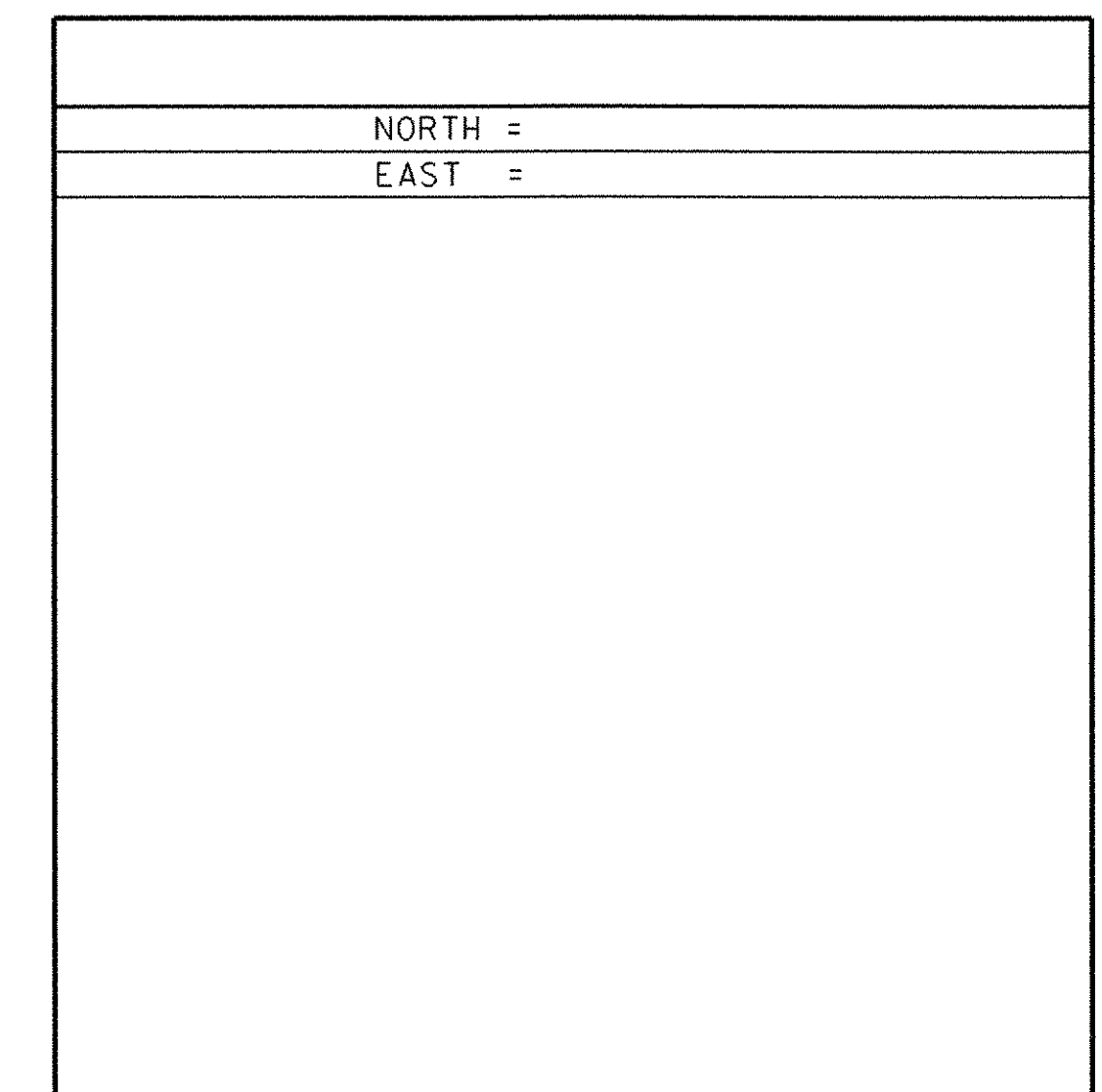
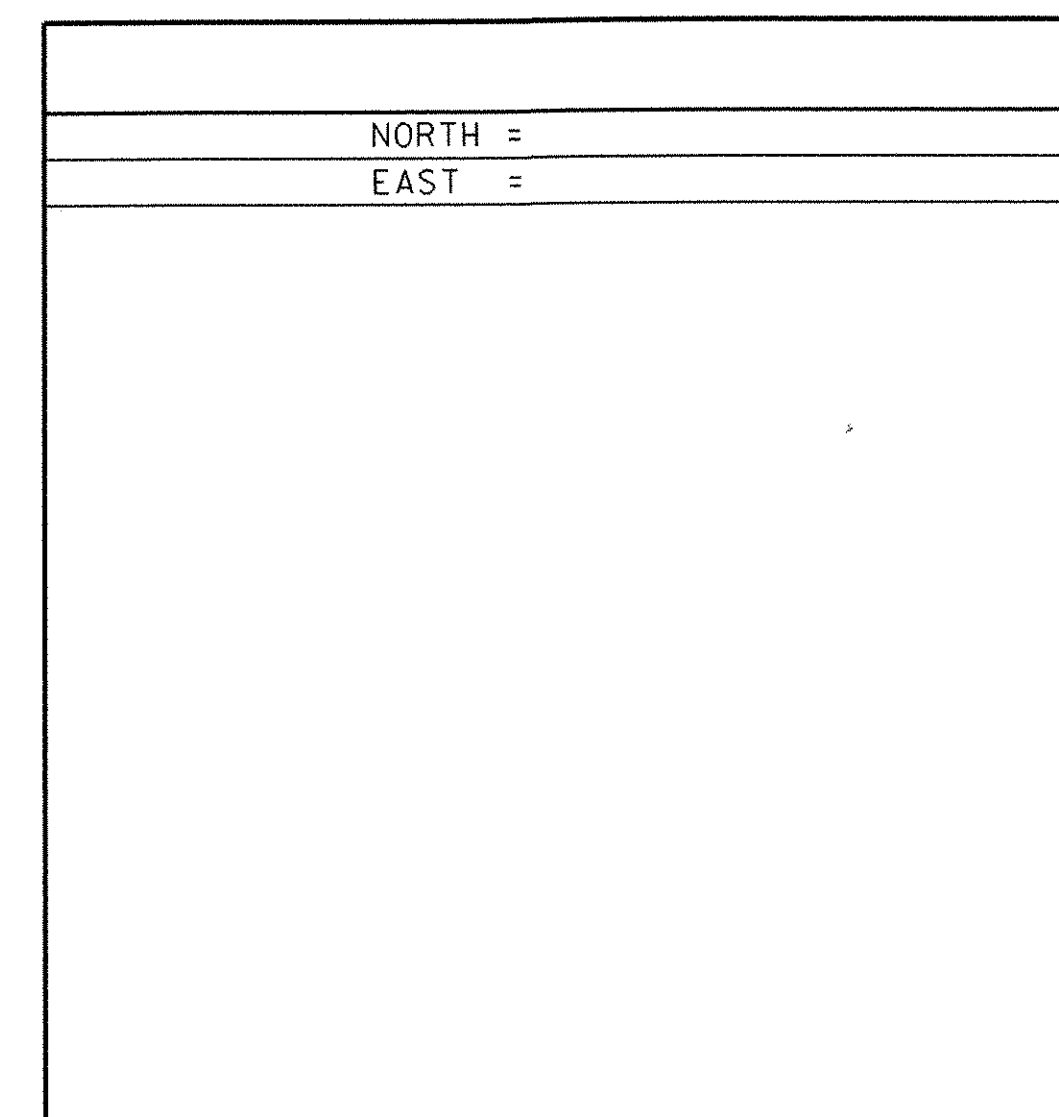
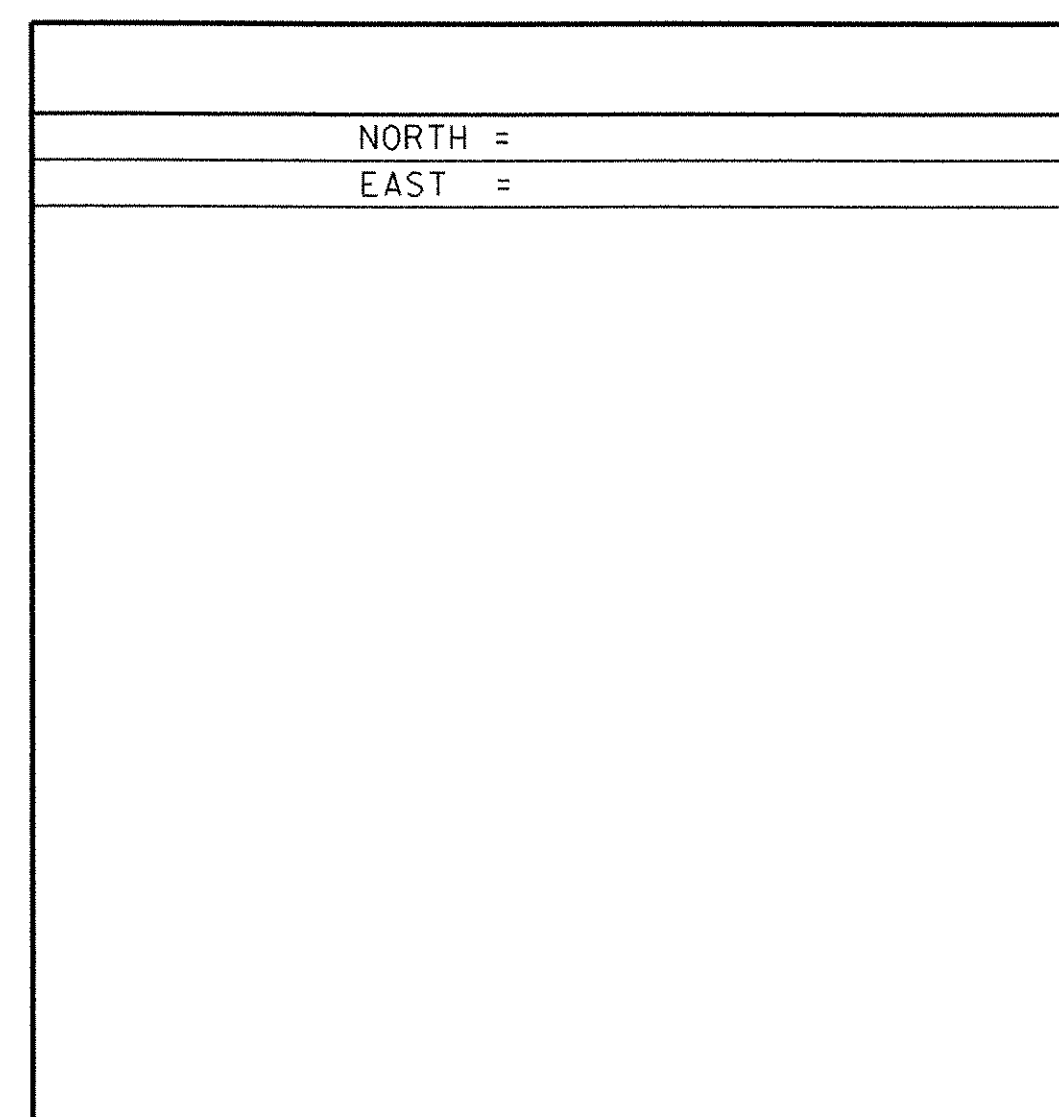
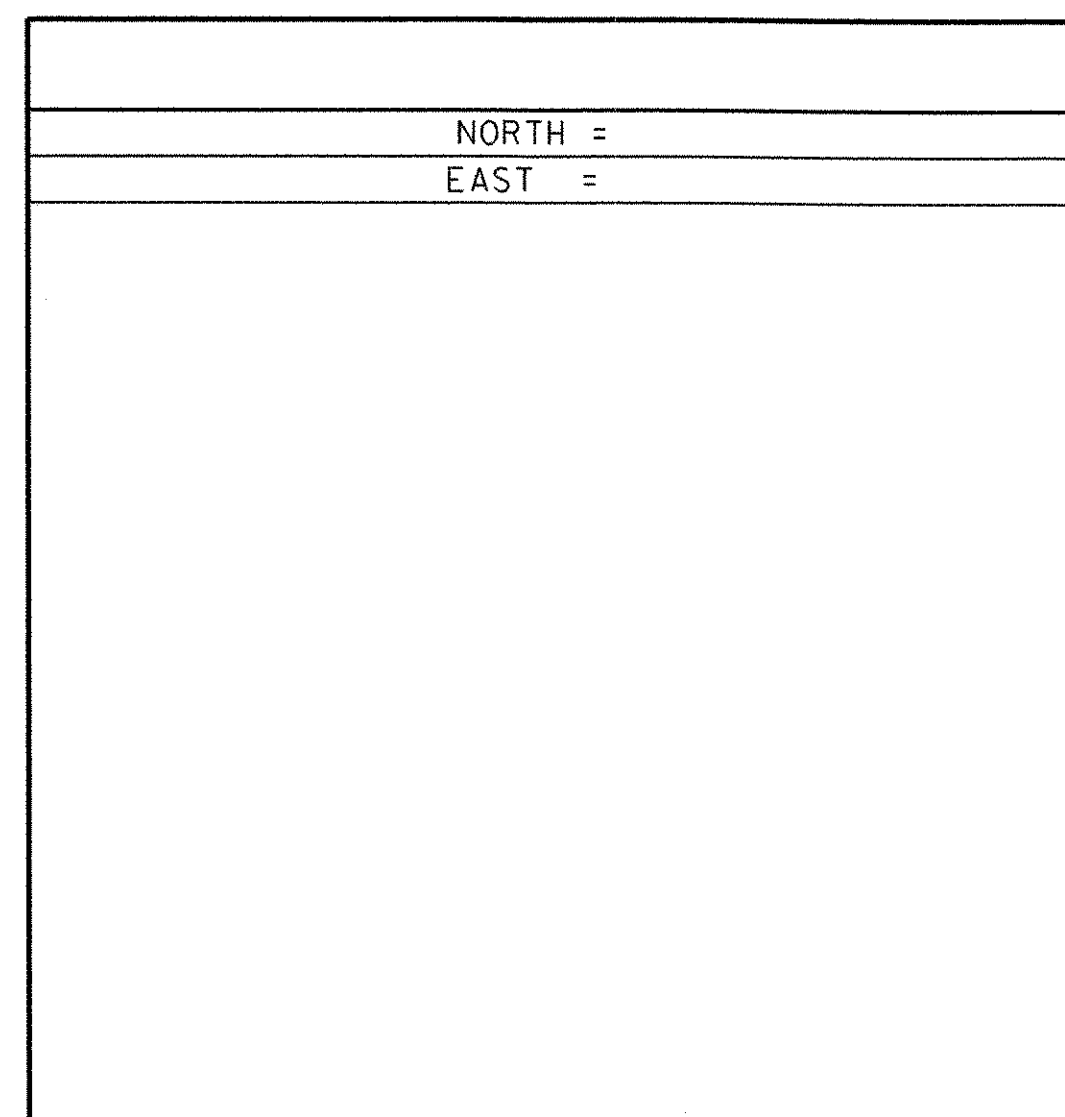
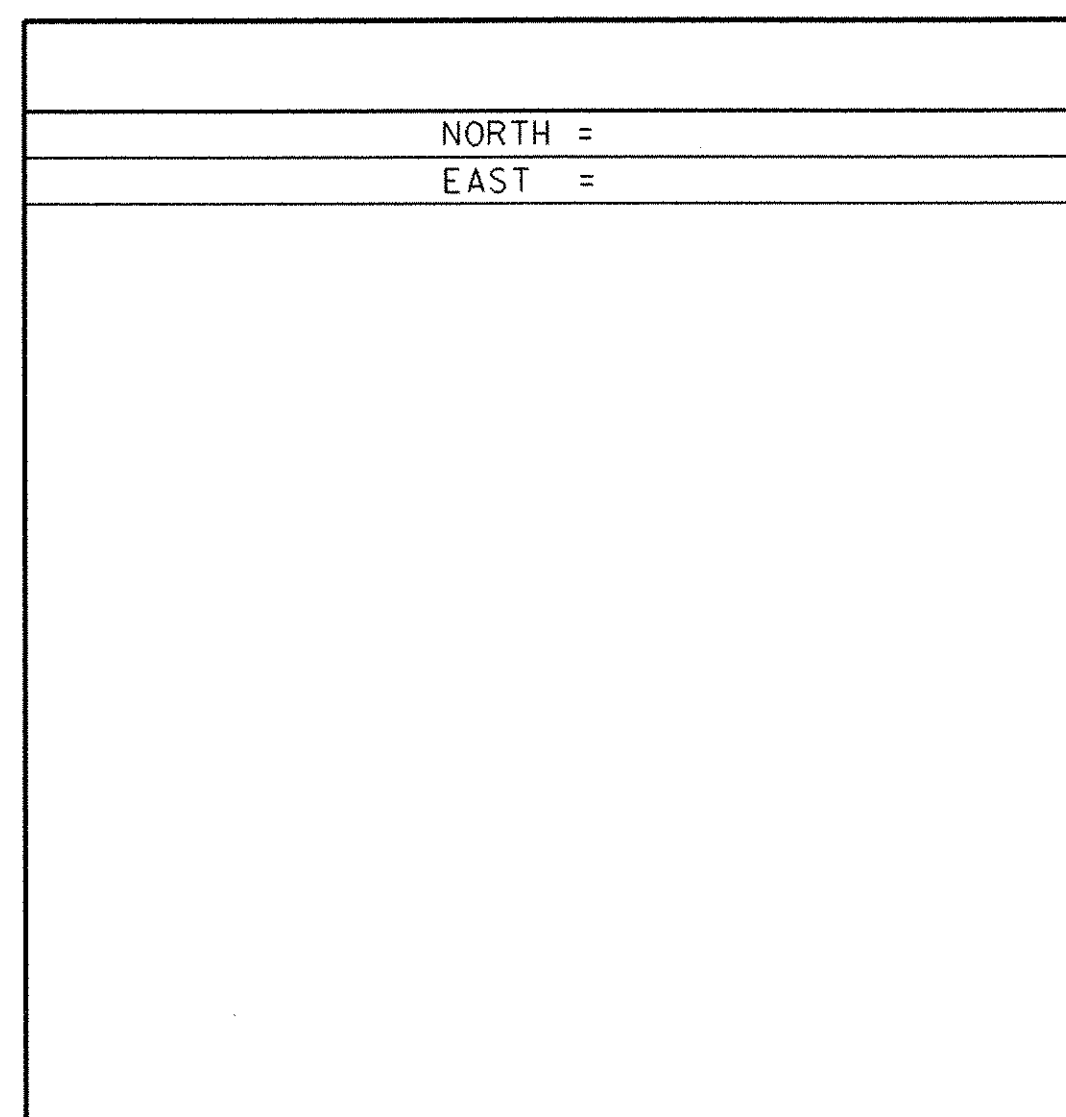
• TO ALLOW THE STATE PLANE COORDINATES TO FIT THE AGENCY DESIGN PLANE, SUBTRACT 400,000 FROM THE NORTHING AND SUBTRACT 1,400,000 FROM THE EASTING.
• DESCRIPTION PROVIDED BY VERMONT AGENCY OF TRANSPORTATION GEODETIC SURVEY UNIT

TRAVERSE TIES



• MAIN TRAVERSE COMPLETED 01/21/98 by L. Orvis P.C. & R. Bullock in metric and converted to feet on 10/15/01 by R. Bullock

ALIGNMENT TIES



DATUM
VERTICAL NAVD 88
HORIZONTAL NAD 83/92
ADJUSTMENT Least Sq.

PROJECT NAME: Proctor - Pittsford
PROJECT NUMBER: BHF 1443 (37)
FILE NAME: 96J242/survey/xj242et1.dgn PLOT DATE: 10-JAN-2003
PROJECT LEADER: C.P. WILLIAMS DRAWN BY: R. Bullock
DESIGNED BY: W.B. SYMONDS CHECKED BY: W.B. SYMONDS
SURVEY TIE SHEET SHEET 6 OF 60