

GPS CONTROL POINTS

TRAVERSE TIES

ALIGNMENT

HVCTRL #1

STANDARD DISK STAMPED

Shoskes

N = 160026.02
E = 158910.89
ELEV. = 587.37

To reach from the intersection of U.S. route 5 and VT route 30 north in Brattleboro, go north on route 30 for 8.8 mi. (14.2 KM) to the intersection of Town Highway 2 (road leading to Williamsville, South Newfane, East Dover and West Dover) left. Turn left and go north and west along TH 2 for 2.0 mi. (3.2 KM) to the bridge over Rock River. At the end of the bridge turn left and go west along TH 2 for 0.7 mi. to the covered bridge over Rock River. Continue straight on TH 2 for 0.4 mi. (0.6 KM) to the mark on the left. The mark is set in the top of a .3 m. (1ft.) diameter concrete monument poured 1.3 m (4.3 ft) deep. It is 4.8 m (15.7 ft) southeast of and about 0.2 m (0.7 ft) higher than the centerline of TH 2, 11.8 m (128.9 ft) northeast of the centerline of a gravel drive leading to the Shoskes residence, and 1.6m (5.2 ft) southwest of pole #39/93 and a fiberglass witness post.

HVCTRL #2

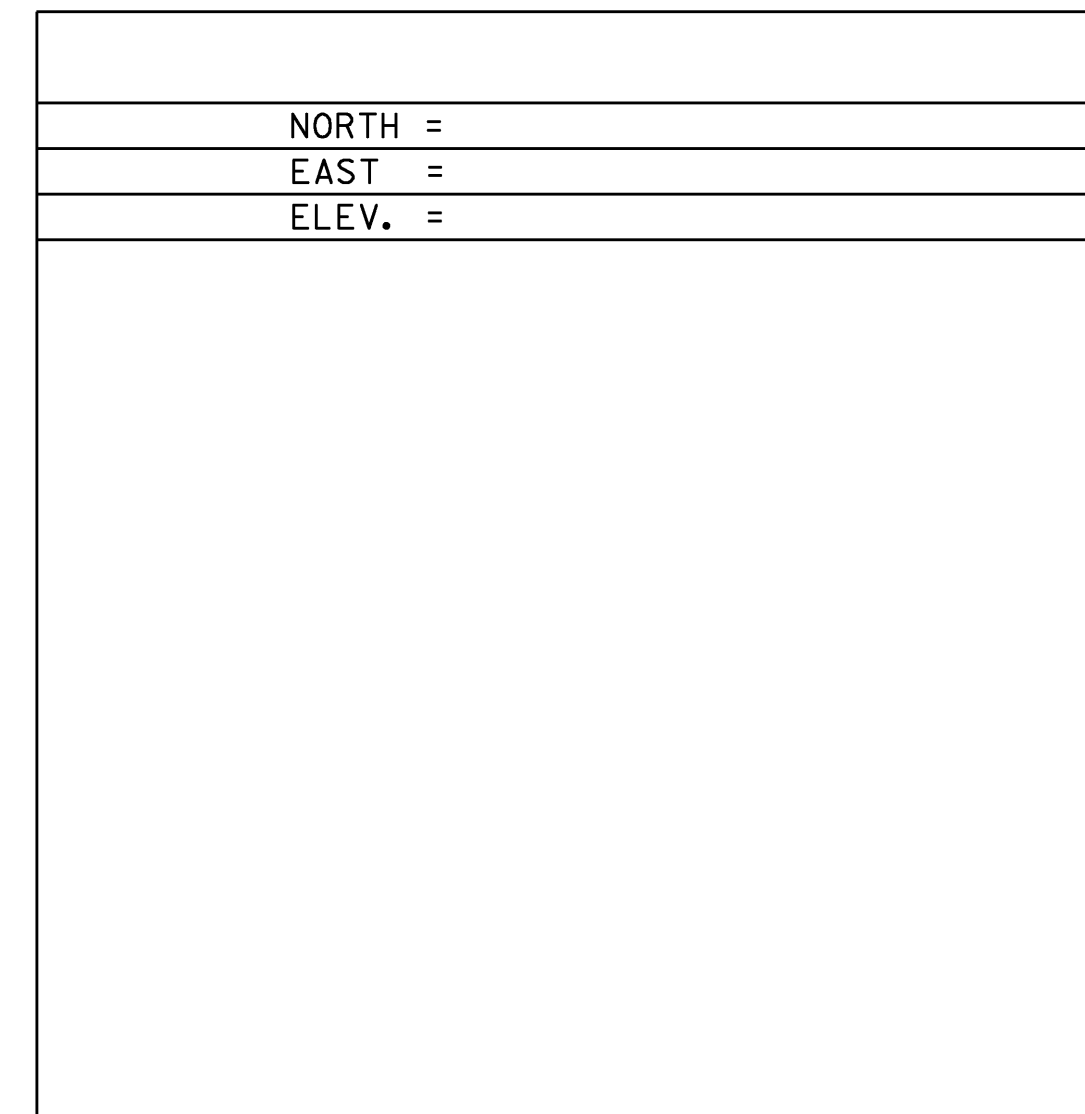
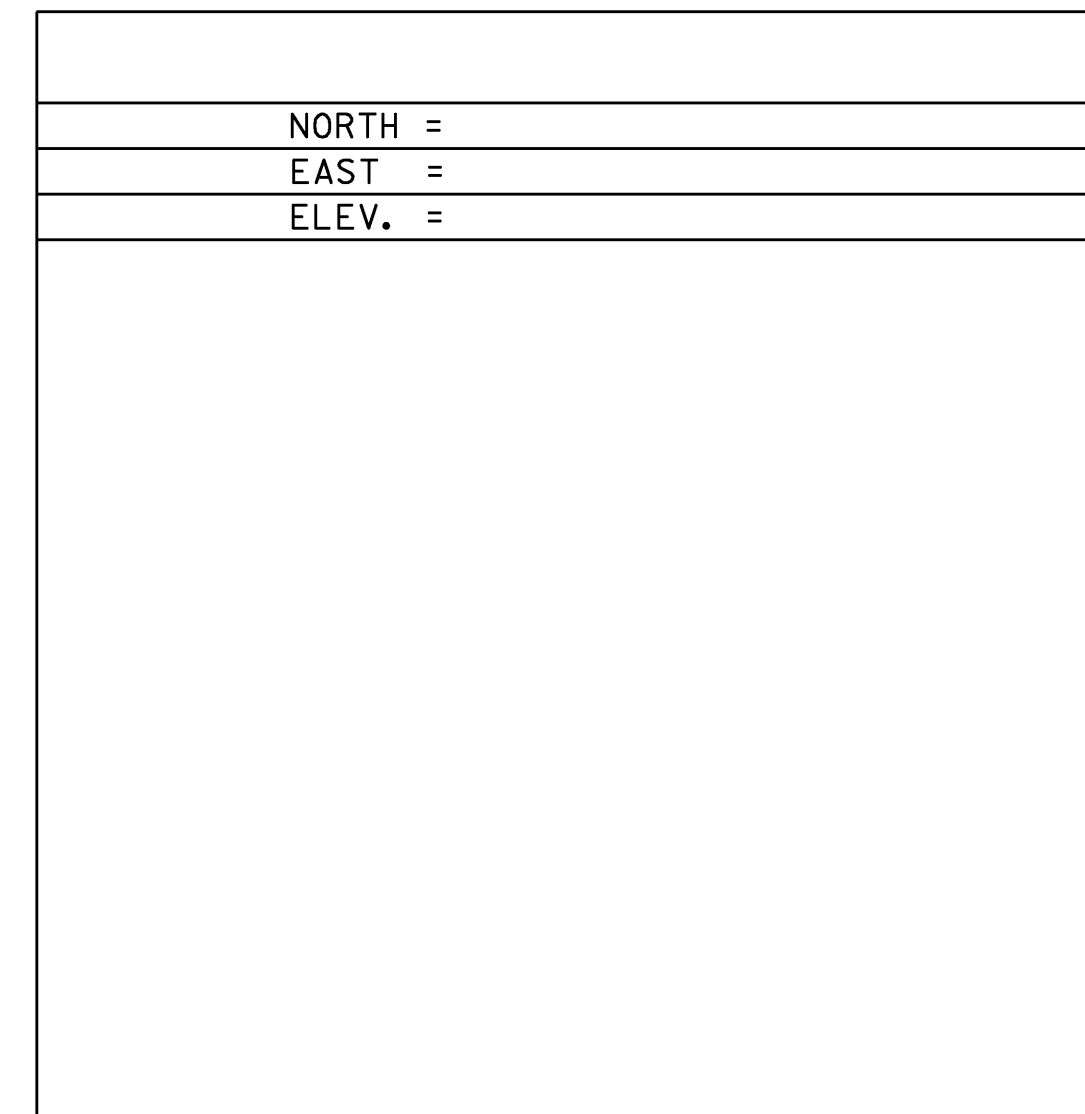
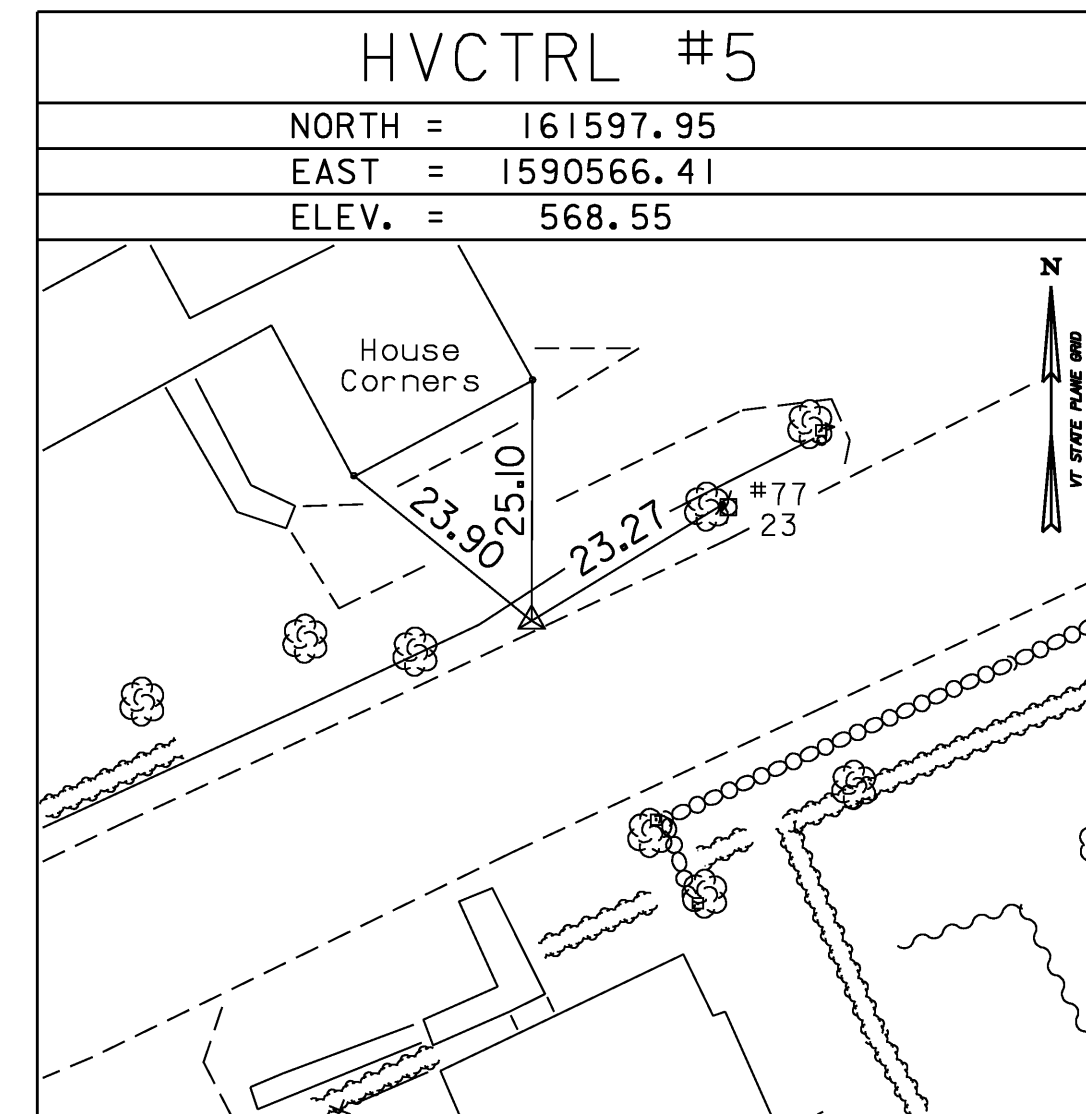
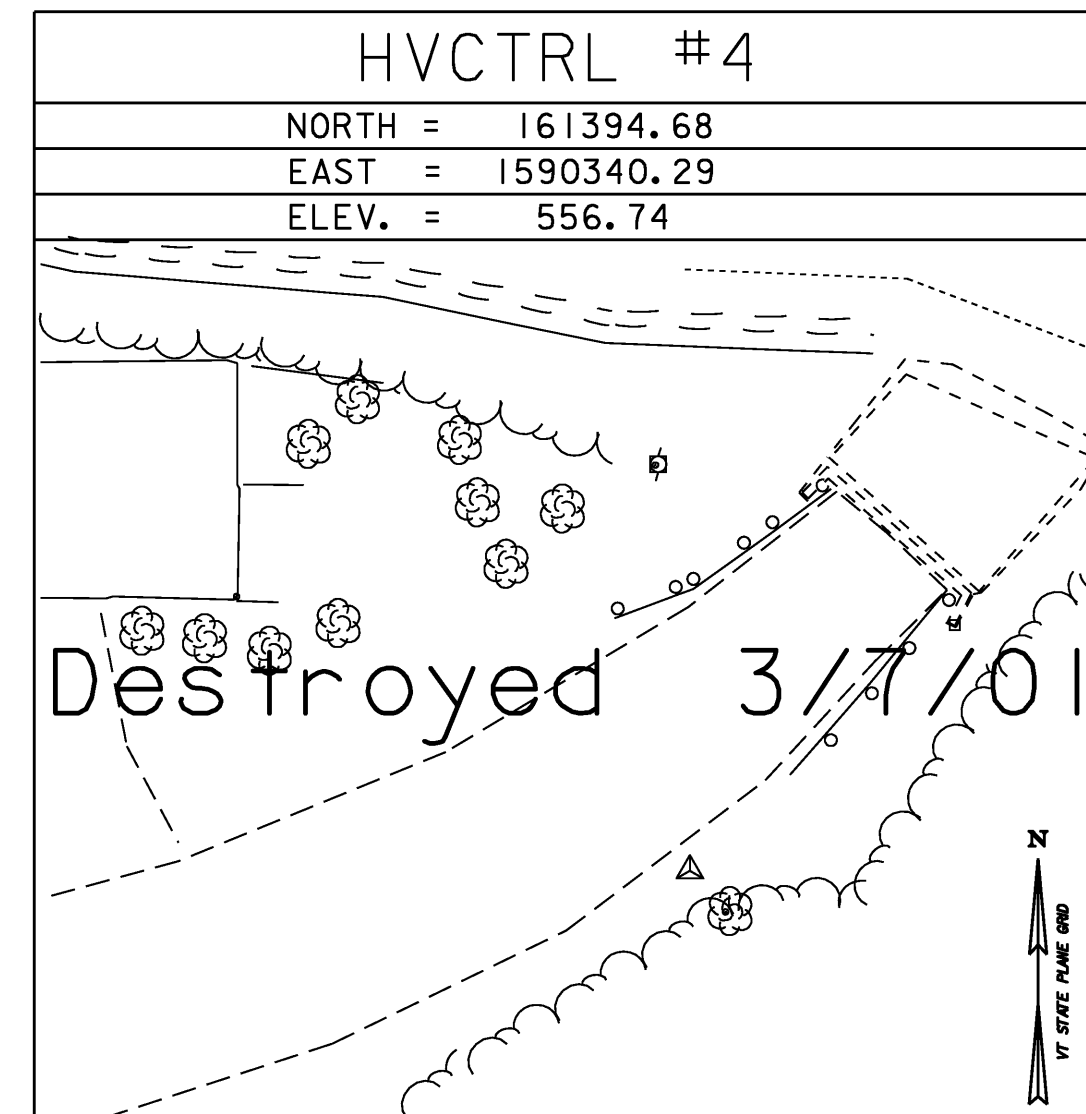
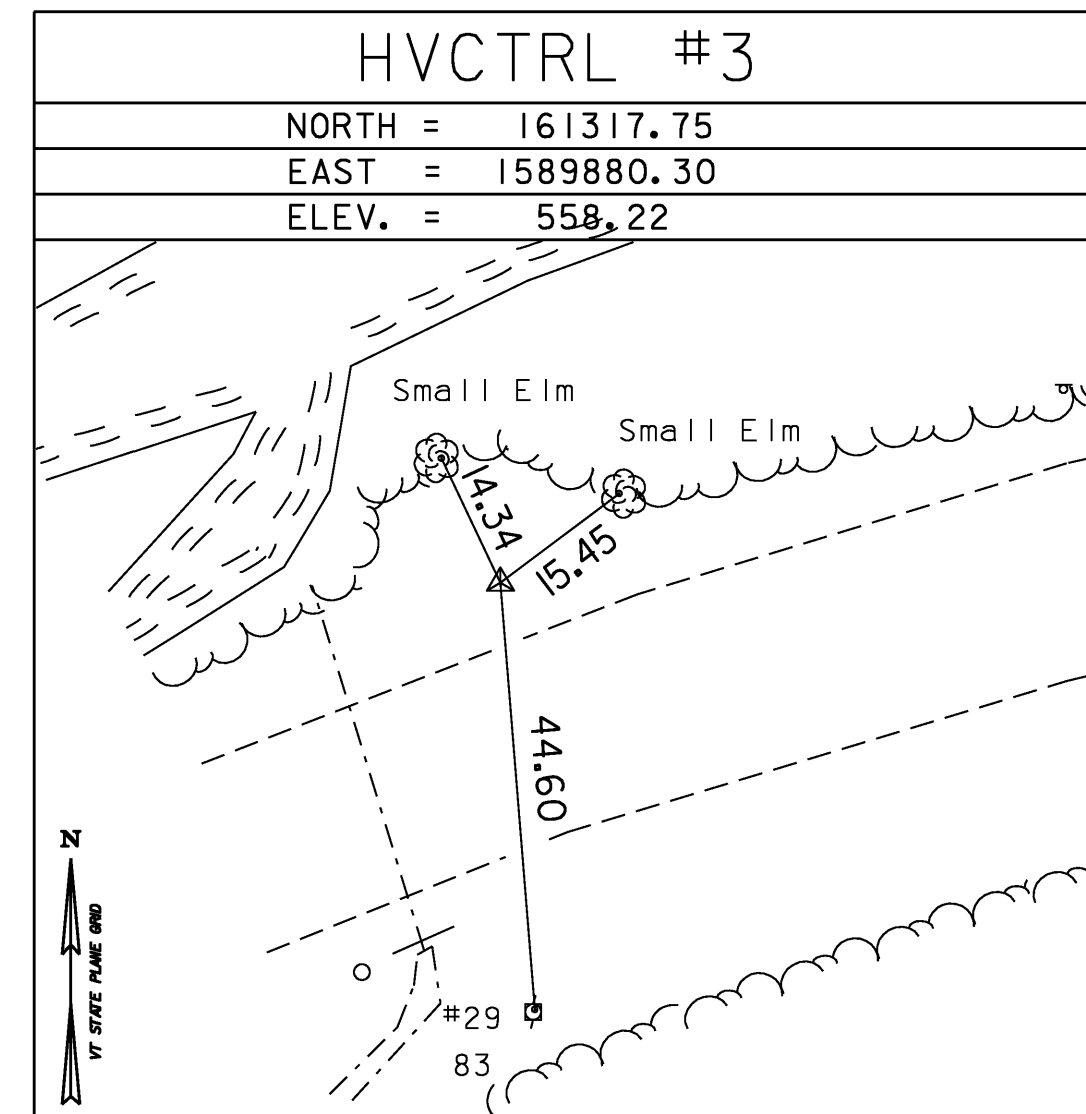
STANDARD DISK STAMPED

Shoskes Az Mk

N = 161007.58
E = 1589488.87
ELEV. = 565.06

To reach from the intersection of U.S. route 5 and VT route 30 north in Brattleboro, go north on route 30 for 8.8 mi. (14.2 KM) to the intersection of Town Highway 2 (road leading to Williamsville, South Newfane, East Dover, and West Dover) left. Turn left and go north and west along TH 2 for 2.0 mi. (3.2 KM) to the bridge over Rock River. At the end of the bridge turn left and go west along TH 2 for 0.7 mi. to the covered bridge over Rock River. Continue straight on TH 2 for 0.2 mi. (0.3 KM) to the mark on the right. The mark is set in the top of a large boulder about 0.5 m (1.6 ft) below ground surface, accessible by an access cover. It is 6.6 m (21.7 ft) northwest of and about 0.7 m (2.3 ft) lower than the centerline of TH 2, 23.5 m (77.1 ft) southwest of pole #64/86/32, 8.4 m (27.6 ft) southeast of a 0.3 m (1 ft) diameter white pine, and 0.4 m (1.3 ft) southeast of a fiberglass witness post.

• DESCRIPTION PROVIDED BY VERMONT AGENCY OF TRANSPORTATION GEODETIC SURVEY UNIT



• MAIN TRAVERSE COMPLETED Apr 11 23, 1998 by R. Gilman P.C. & T. Companion

Alignment Current as of 04/27/09

	STATION	NORTHING	EASTING
POB	7+04.760	161289.1600	1589852.5600
PC	7+09.993	161291.0880	1589857.4250
PT	9+15.563	161344.4370	1590055.4896
Main Line			
Radius:		900.000	
Delta:		13° 05' 13.23" Right	
Degree of Curvature (Arc):		1° 56' 25.52"	
Length:		205.570	
Tangent:		103.234	
Chord:		205.124	
Middle Ordinate:		5.863	
External:		5.901	
PC	11+48.409	161378.9802	1590285.7588
PT	12+18.504	161411.8642	1590346.0419
Main Line Continued			
PT	13+93.035	161538.2819	1590465.3102
Radius:		75.000	
Delta:		23° 21' 16.38" Right	
Degree of Curvature (Arc):		23° 17' 06.19"	
Length:		30.571	
Tangent:		15.501	
Chord:		30.360	
Middle Ordinate:		1.552	
External:		1.585	
POE	15+84.209	161620.0975	1590638.0925
PC	13+62.464	161520.0042	1590441.0687
PT	13+93.035	161538.2819	1590465.3102

PT	13+93.035	161538.2819	1590465.3102
Radius:		75.000	
Delta:		23° 21' 16.38" Right	
Degree of Curvature (Arc):		23° 17' 06.19"	
Length:		30.571	
Tangent:		15.501	
Chord:		30.360	
Middle Ordinate:		1.552	
External:		1.585	
POE	15+84.209	161620.0975	1590638.0925

DATUM	
VERTICAL	NAVD 88
HORIZONTAL	NAD 83 (92)
ADJUSTMENT	Compass

PROJECT NAME:	Newfane	PLOT DATE:	29-APR-2009
PROJECT NUMBER:	BHF 0106 (4)S	DRAWN BY:	R. Bullock
DESIGNED BY:	T. Lackey	CHECKED BY:	R. Whitcomb
SURVEY TIES		SHEET II	OF 67