

PART & MATERIAL LIST

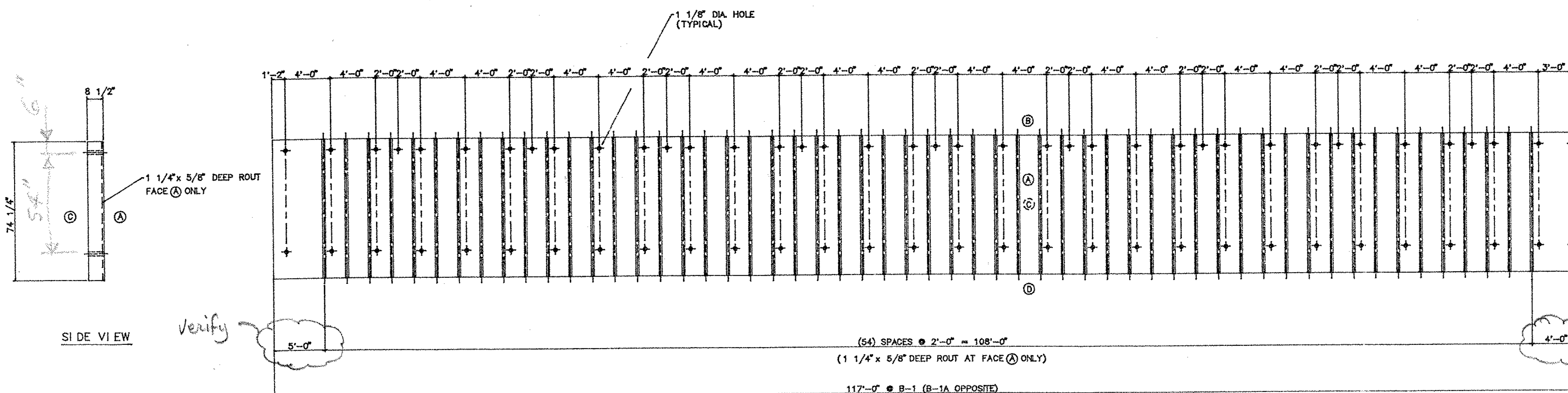
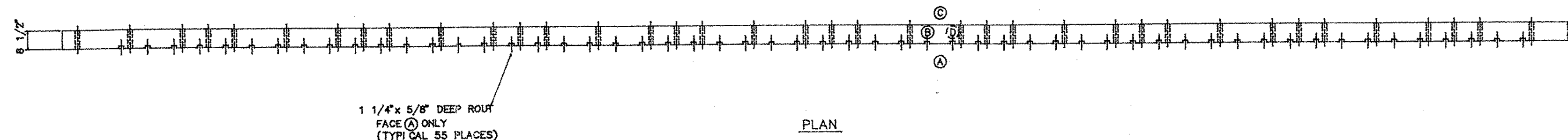
WOOD MATERIAL LIST										HARDWARE SCHEDULE								
NO. REQD	DESCRIPTION	MARK	SIZE	LENGTH	NOM. LAMS	LUMBER	CAMBER	DETAIL ON SHT.	NOTES	LOAD	MARK	CONN.	NO.	DESCRIPTION	DETAIL ON SHT.	NOTES	LOAD	
2	STRINGERS	B-1	8 1/2 x 74 1/4	117'-0"	2"	22F-V3	7,468' -10 1/8" R. (2 3/4" x 3)	1	1									
2	STRINGERS	B-1A	8 1/2 x 74 1/4	117'-0"	2"	22F-V3	7,468' -10 1/8" R. (2 3/4" x 3)	1	1									
24	FLOORBEAMS	FB-1	10 1/2 x 18 1/2	18'-0"	2"	18F-V2	NONE		1									

RECEIVED
 CK'D BY _____ OK'D BY _____

SEP 25 1998

RESUBMIT _____ APPROVED *A. Neta*
 BY *JHW* DATE *9/28/98*
 VAO

SHOP NOTE:
 1) FABRICATE WITH LUMBER TREATED 0.6 pcf PENTA TYPE C, BEFORE GLUING, IN ACCORDANCE WITH APPLICABLE AWPA STANDARDS.



Approved
 Approved As Noted
 Revise and Resubmit
 By: *Neil Daniels*
 Date: *9-28-98*

RADIUS: 7,468' -10 1/8"	
DI. STANCE TO C.L.	OFFSET (IN.)
0'-0"	0"
4'-0"	1/8"
8'-0"	1/16"
12'-0"	1/8"
16'-0"	3/16"
20'-0"	5/16"
24'-0"	7/16"
28'-0"	5/8"
32'-0"	13/16"
36'-0"	1 1/16"
40'-0"	1 1/4"
44'-0"	1 9/16"
48'-0"	1 13/16"
52'-0"	2 3/16"
56'-0"	2 1/2"

IN EVENT OF ERROR, DEFECTIVE MATERIAL, AND/OR WORKMANSHIP, PLEASE NOTIFY THE NEAREST ENWOOD SALES OFFICE IMMEDIATELY. ENWOOD RESERVES THE RIGHT TO INVESTIGATE AND CORRECT ALL ALLEGED ERRORS AND DEFECTS

(Structures Copy)

A.I.T.C. CERTIFICATE & MARKS

COPYRIGHT (C) ENWOOD STRUCTURES, LLC. - MORRISVILLE, N.C. - ALL RIGHTS RESERVED AND ENFORCED.

MATERIAL: STRESS GRADED, KILN DRIED SOUTHERN PINE LUMBER	DESIGN DATA: NO DESIGN BY ENWOOD STRUCTURES	CHARTER MEMBER A.I.T.C.	ENWOOD STRUCTURES MANUFACTURER OF ENGINEERED WOOD PRODUCTS	CLEARANCE DATA - MATERIAL: HEIGHT 117'-0", WIDTH	DRAWN: R. R. HAYES 9/22/98 CHECKED	OUR JOB NO. 98-HB-1190	BRI DGE #17 NEWFANE, VT.	SHEET 1 OF 1
ADHESIVE: WATERPROOF	FINISH: PREMIUM ARCHITECTURAL INDUSTRIAL RUSTIC SPA STAIN VARNISH EXIST AS NOTED PROTECTION: END WRAP LEAD WRAP BRINLE WRAP					APPROVED FOR FABRICATION	ARCHITECT CONTRACTOR: NEIL H. DANIELS, INC.	