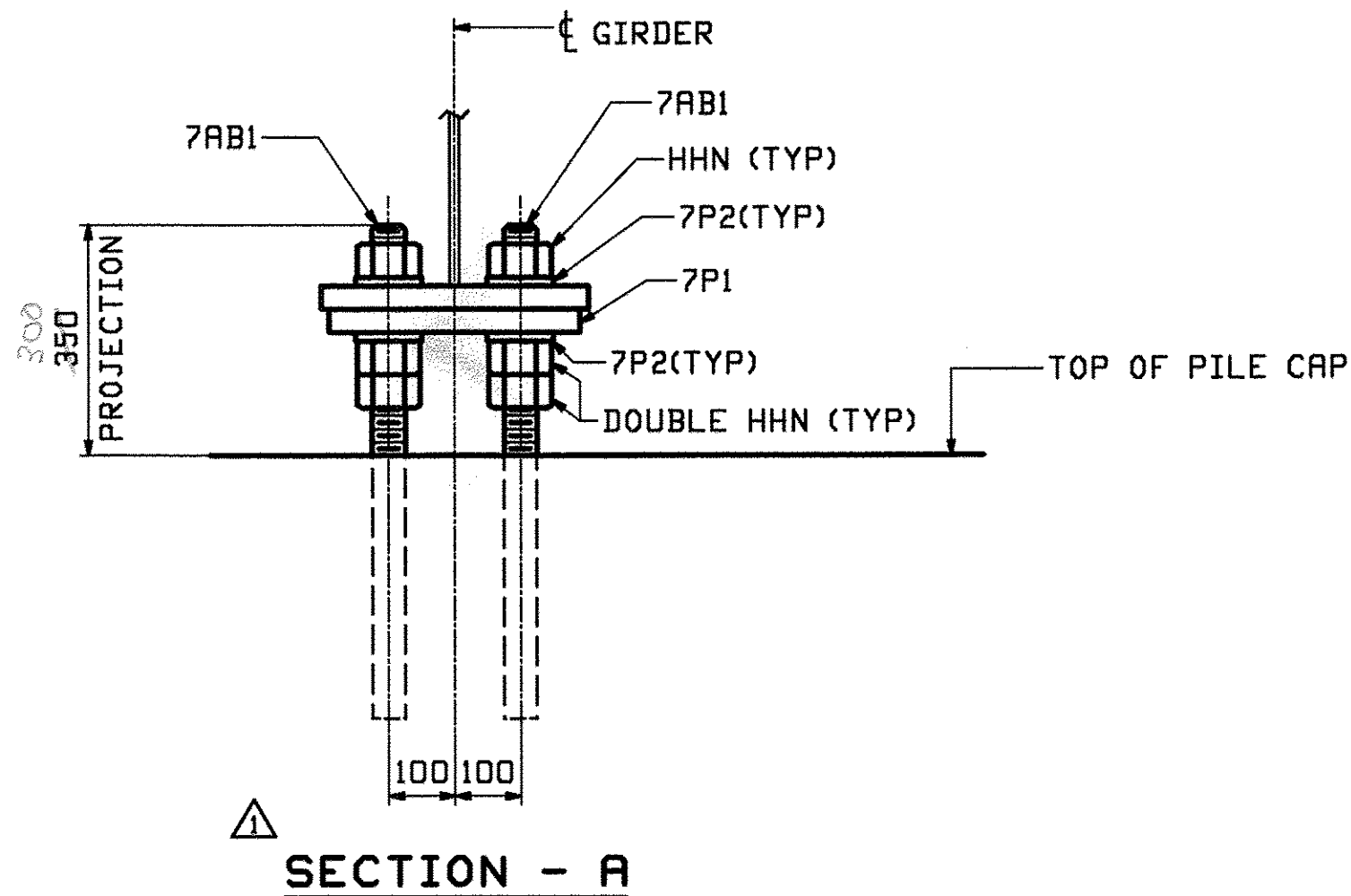
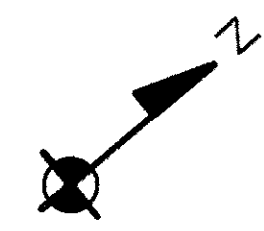


FRAMING PLAN



SECTION - A

RECEIVED
 OK'D BY: *WAC* OK'D BY: *DBP*
 AUG 11 2009
 REQUEST BY: *CUC* APPROVED: *ASNOTED*
 BY: *CUC* DATE: *8-14-09*

FIELD BOLT LIST										A325 Type 3 BOLTS	
LINE	NO. REQ'D.	BOLT DIM.	BOLT LEN.	BOLTS # OF CONN.	GRIP	THICKNESS OF PCS. CONNECTED	WASHER CODE	PIECES CONNECTED AND REMARKS			
1								INT. DIAPHRAGMS			
2	240	7/8	2 1/4	6	40	22	9 13	1	DIAPHRAGM WEB TO CONN. PLATE		
WASHER CODES											
1: 1 Hard Flat Washer											

FIELD BOLT SUMMARY						EXACT COUNT - NONE EXTRA	
LINE	NO. OF BOLTS	BOLT DIM.	TYPE	BOLT LEN.	ACTUAL COUNT	REMARKS	
1	240	7/8	A325 Type 3	2 1/4	240		
2							
3	240	Hard Flat Washers for 7/8" BOLT			F436-3		
4							
5							
6							

08/07/2009	ADDED ANCHOR BOLTS (EXTRA-TEC-2894001-F)	WJF	PCP			
REV.	DATE	REMARKS	DWN	CHK	APVL	SHOP
MATERIAL:		SURFACE PREP. & PAINT:		HOLES:		SHOP BOLTS:
DESCRIPTION: FRAMING PLAN & FIELD BOLTS						
CASCO BAY STEEL STRUCTURES, INC. 75 SPRING HILL ROAD SACO, MAINE 04072 PHONE (207) 282-7360 FAX. (207) 282-1179						
STRUCTURE: T.H. 10 over Wheststone Brook BRIDGE NO 30 Brattleboro Windham County			DRAWN: JTJB	DATE: 07/16		
			CHKD: PCP	DATE: 07/21		
LOCATION: Town of Brattleboro, VERMONT			JOB NO. 418	DWG NO. E1		
PROJ. NO. BRF 2000(21)S				REV. A		
CUSTOMER: VT ROT						

11/17/08 Rev. 02 2009 08/14/09 11/17/08 Rev. 02 2009 08/14/09 11/17/08 Rev. 02 2009 08/14/09