

CONSTRUCT TELEPHONE BUILDING DRIVE
MAINLINE 10+145.0 RT.

CONSTRUCT PAVED APRON
DRIVE 20+011.25 LT. (2 m)

SPECIAL PROVISION (REMOVE AND SALVAGE EXISTING BUS SHELTER)
MAINLINE 10+161.2 RT. (BUS SHELTER)

REMOVE EXISTING PAVEMENT
SEE PROJECT NOTE 4 ON SHEET 3

SIDEWALK RAMP, TYPE 6
MAINLINE 10+074.9 RT. - 10+084.7 RT.
MAINLINE 10+082.3 LT. - 10+087.0 LT.
MAINLINE 10+163.6 RT. - 10+168.2 RT.
MAINLINE 10+164.5 LT. - 10+167.5 LT.
MAINLINE 10+164.3 LT. - 10+168.2 LT.
VT 9 3+062.5 LT. - 3+068.4 LT.

SPECIAL PROVISION (BRIDGE RAILING, ANODIZED ALUMINUM/PEDESTRIAN)
MAINLINE 10+091.13 LT. - 10+119.370 RT.
MAINLINE 10+091.13 RT. - 10+119.370 RT.

CAST-IN-PLACE CONCRETE CURB, TYPE B
MAINLINE 10+035.0 RT. - 10+078.7 RT.
MAINLINE 10+080.9 RT. - 10+091.05 RT.
MAINLINE 10+119.45 RT. - 10+143.2 RT.
MAINLINE 10+146.6 RT. - 10+166.6 RT.
MAINLINE 10+167.4 RT. - 10+168.3 RT.
MAINLINE 10+084.5 LT. - 10+091.05 LT.
MAINLINE 10+119.45 LT. - 10+166.7 LT.
MAINLINE 10+167.5 LT. - 10+163.6 LT.
DRIVE 20+004.50 RT. - 20+014.60 RT.
VT 9 3+019.2 RT. - 3+055.8 RT.
VT 9 3+041.5 LT. - 3+047.5 LT.
VT 9 3+062.5 LT. - 3+068.4 LT.

DETECTABLE WARNING SURFACE (YELLOW)
MAINLINE 10+079.80 RT
MAINLINE 10+083.82 LT
MAINLINE 10+166.78 RT
MAINLINE 10+166.83 LT
VT 9 3+065.4 LT.

PORTLAND CEMENT CONCRETE SIDEWALK, 125mm
MAINLINE 10+035.0 RT. - 10+091.05 RT.
MAINLINE 10+119.450 RT. - 10+168.3 RT.
DRIVE 20+003.88 RT. - DRIVE 20+014.60 RT.
MAINLINE 10+119.450 LT. - 10+163.6 LT.
VT 9 3+019.2 RT. - 3+065.0 RT.
VT 9 3+041.5 LT. - 3+047.5 LT.
VT 9 3+062.5 LT. - 3+068.4 LT.

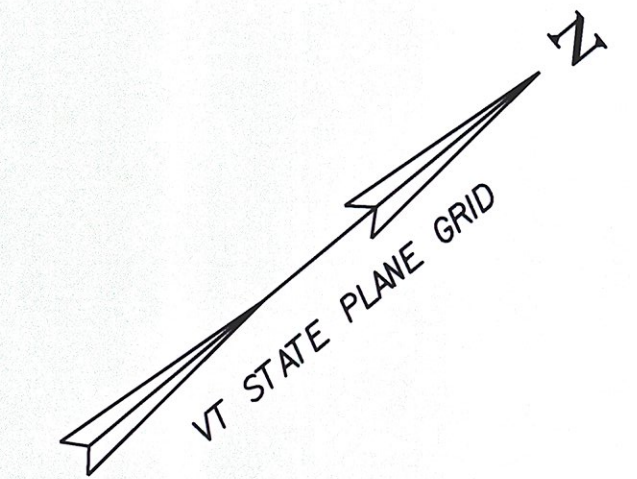
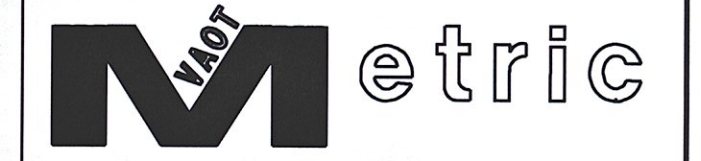
PLANK RAIL
MAINLINE 10+145.4 RT. - 10+152.9 RT.

SPECIAL PROVISION (ALUMINUM APPROACH RAILING, ANODIZED)
MAINLINE 10+075.70 RT. - 10+091.13 RT.
DRIVE 20+013.53 RT. - MAINLINE 10+091.13 LT.
MAINLINE 10+119.37 LT. - 10+134.73 LT.
MAINLINE 10+119.37 RT. - 10+139.83 RT.

REMOVAL AND DISPOSAL OF GUARDRAIL
DRIVE 20+005.06 RT. - 20+014.24 RT.

NOTE:

SEE SHEETS 22-23 FOR TRAFFIC SIGNS AND PAVEMENT MARKINGS DETAILS. SEE SHEETS 20-21 FOR DRAINAGE AND UTILITIES DETAILS.



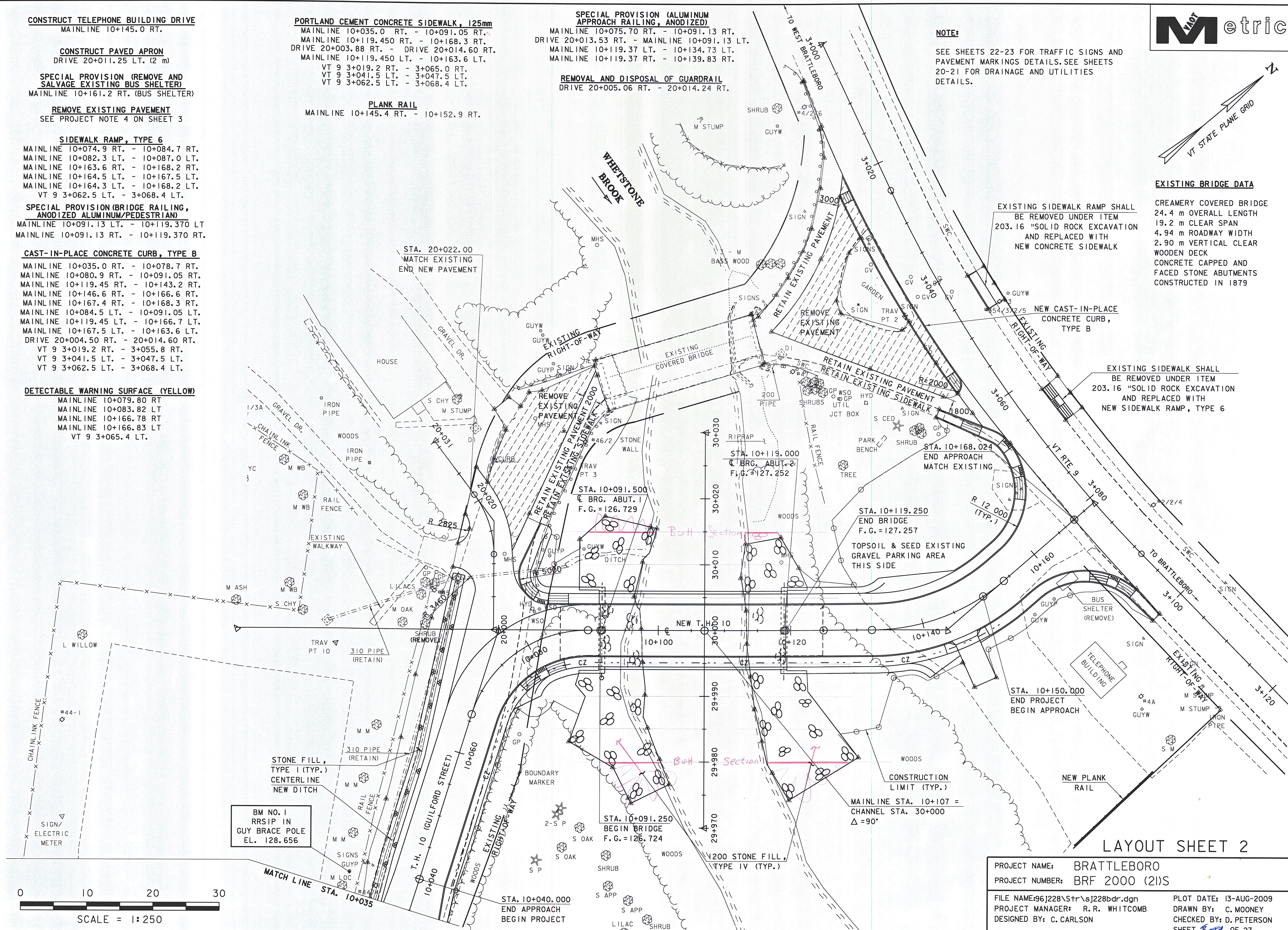
EXISTING BRIDGE DATA

CREAMERY COVERED BRIDGE
24.4 m OVERALL LENGTH
19.2 m CLEAR SPAN
4.94 m ROADWAY WIDTH
2.90 m VERTICAL CLEAR
WOODEN DECK
CONCRETE CAPPED AND
FACED STONE ABUTMENTS
CONSTRUCTED IN 1879

EXISTING SIDEWALK RAMP SHALL BE REMOVED UNDER ITEM 203.16 "SOLID ROCK EXCAVATION AND REPLACED WITH NEW CONCRETE SIDEWALK"

NEW CAST-IN-PLACE CONCRETE CURB, TYPE B

EXISTING SIDEWALK SHALL BE REMOVED UNDER ITEM 203.16 "SOLID ROCK EXCAVATION AND REPLACED WITH NEW SIDEWALK RAMP, TYPE 6"



LAYOUT SHEET 2

PROJECT NAME:	BRATTLEBORO	PLOT DATE:	13-AUG-2009
PROJECT NUMBER:	BRF 2000 (2)S	DRAWN BY:	C. MOONEY
FILE NAME:	96J228\Str\sJ228bdr.dgn	CHECKED BY:	D. PETERSON
PROJECT MANAGER:	R. R. WHITCOMB	SHEET	22 OF 27
DESIGNED BY:	C. CARLSON		Cx51