

**CONSTRUCT TELEPHONE BUILDING DRIVE**  
MAINLINE 10+145.0 RT.

**CONSTRUCT PAVED APRON**  
DRIVE 20+011.25 LT. (2 m)

**SPECIAL PROVISION (REMOVE AND SALVAGE EXISTING BUS SHELTER)**  
MAINLINE 10+161.2 RT. (BUS SHELTER)

**REMOVE EXISTING PAVEMENT**  
SEE PROJECT NOTE 4 ON SHEET 3

**SIDEWALK RAMP, TYPE 6**  
MAINLINE 10+074.9 RT. - 10+084.7 RT.  
MAINLINE 10+082.3 LT. - 10+087.0 LT.  
MAINLINE 10+163.6 RT. - 10+168.2 RT.  
MAINLINE 10+164.5 LT. - 10+167.5 LT.  
MAINLINE 10+164.3 LT. - 10+168.2 LT.  
VT 9 3+062.5 LT. - 3+068.4 LT.

**SPECIAL PROVISION (BRIDGE RAILING, ANODIZED ALUMINUM/PEDESTRIAN)**  
MAINLINE 10+091.13 LT. - 10+119.370 RT.  
MAINLINE 10+091.13 RT. - 10+119.370 RT.

**CAST-IN-PLACE CONCRETE CURB, TYPE B**  
MAINLINE 10+035.0 RT. - 10+078.7 RT.  
MAINLINE 10+080.9 RT. - 10+091.05 RT.  
MAINLINE 10+119.45 RT. - 10+143.2 RT.  
MAINLINE 10+146.6 RT. - 10+166.6 RT.  
MAINLINE 10+167.4 RT. - 10+168.3 RT.  
MAINLINE 10+084.5 LT. - 10+091.05 LT.  
MAINLINE 10+119.45 LT. - 10+166.7 LT.  
MAINLINE 10+167.5 LT. - 10+163.6 LT.  
DRIVE 20+004.50 RT. - 20+014.60 RT.  
VT 9 3+019.2 RT. - 3+055.8 RT.  
VT 9 3+041.5 LT. - 3+047.5 LT.  
VT 9 3+062.5 LT. - 3+068.4 LT.

**DETECTABLE WARNING SURFACE (YELLOW)**  
MAINLINE 10+079.80 RT  
MAINLINE 10+083.82 LT  
MAINLINE 10+166.78 RT  
MAINLINE 10+166.83 LT  
VT 9 3+065.4 LT.

**PORTLAND CEMENT CONCRETE SIDEWALK, 125mm**  
MAINLINE 10+035.0 RT. - 10+091.05 RT.  
MAINLINE 10+119.450 RT. - 10+168.3 RT.  
DRIVE 20+003.88 RT. - DRIVE 20+014.60 RT.  
MAINLINE 10+119.450 LT. - 10+163.6 LT.  
VT 9 3+019.2 RT. - 3+065.0 RT.  
VT 9 3+041.5 LT. - 3+047.5 LT.  
VT 9 3+062.5 LT. - 3+068.4 LT.

**PLANK RAIL**  
MAINLINE 10+145.4 RT. - 10+152.9 RT.

**SPECIAL PROVISION (ALUMINUM APPROACH RAILING, ANODIZED)**  
MAINLINE 10+075.70 RT. - 10+091.13 RT.  
DRIVE 20+013.53 RT. - MAINLINE 10+091.13 LT.  
MAINLINE 10+119.37 LT. - 10+134.73 RT.  
MAINLINE 10+119.37 RT. - 10+139.83 RT.

**REMOVAL AND DISPOSAL OF GUARDRAIL**  
DRIVE 20+005.06 RT. - 20+014.24 RT.

LINES SHOWN ON THIS PLAN AS EXISTING PROPERTY LINES P/L ARE BELIEVED TO BE ACCURATE BUT SHOULD NOT BE RELIED UPON FOR PURPOSES UNRELATED TO THE TOWN OF BRATTLEBORO'S ACQUISITION OF LAND AND RIGHTS FOR THIS PROJECT.

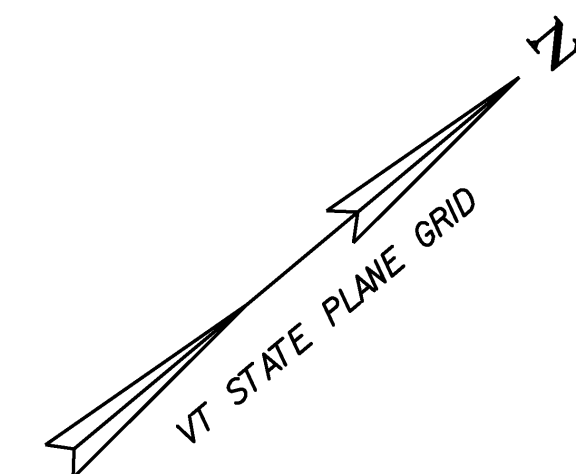
**NOTE:**

SEE SHEETS 22-23 FOR TRAFFIC SIGNS AND PAVEMENT MARKINGS DETAILS. SEE SHEETS 20-21 FOR DRAINAGE AND UTILITIES DETAILS.

FOR DRAINAGE DETAIL SEE ROW SHEET 9 & 10A OF 15

FOR EROSION CONTROL DETAILS SEE ROW SHEETS 11 & 12 OF 15

NOTE: SEE ROW SHEET 10B FOR ALIGNMENT AND CURVE INFORMATION.

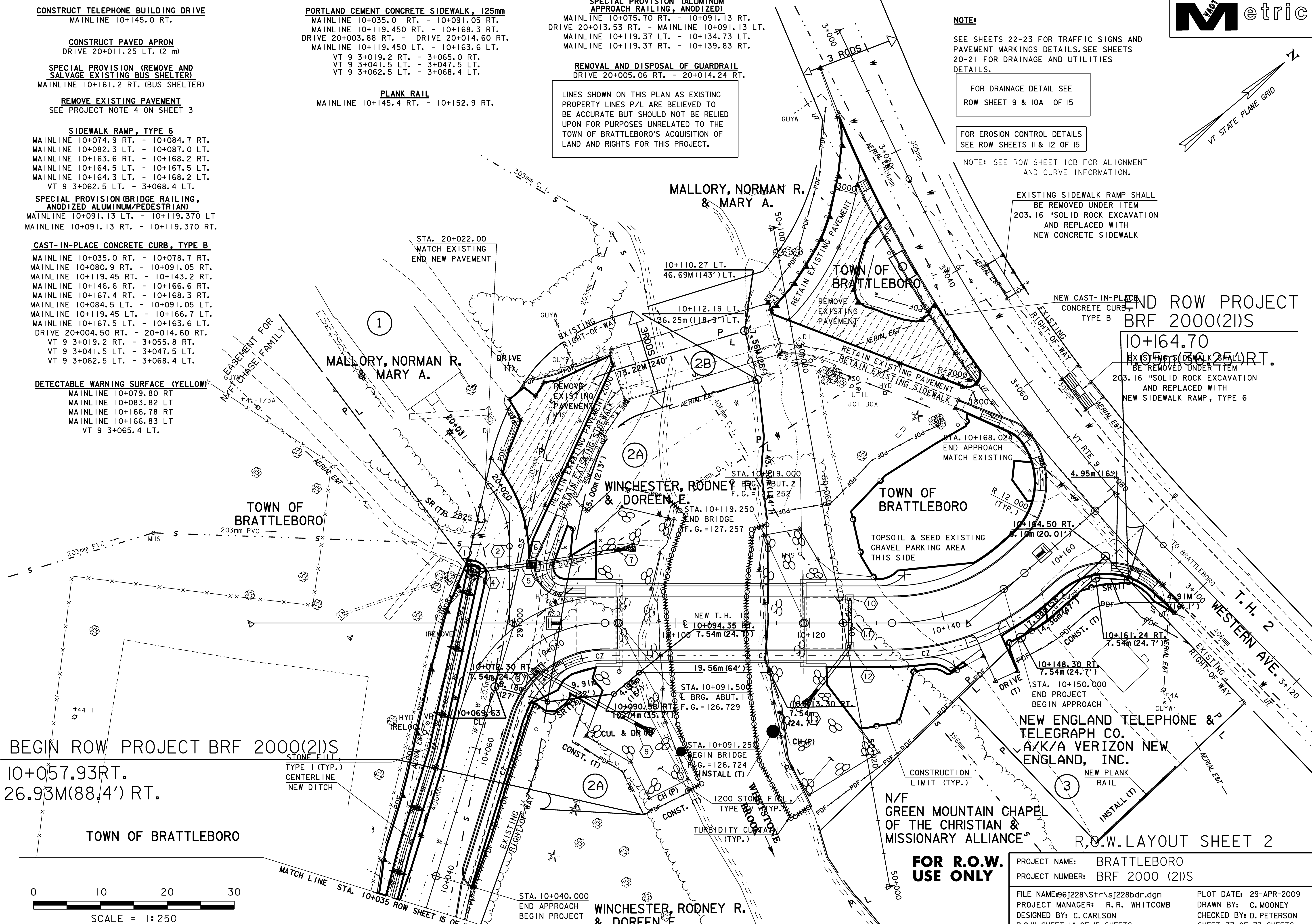


EXISTING SIDEWALK RAMP SHALL BE REMOVED UNDER ITEM 203.16 "SOLID ROCK EXCAVATION AND REPLACED WITH NEW CONCRETE SIDEWALK"

NEW CAST-IN-PLACE CONCRETE CURB TYPE B

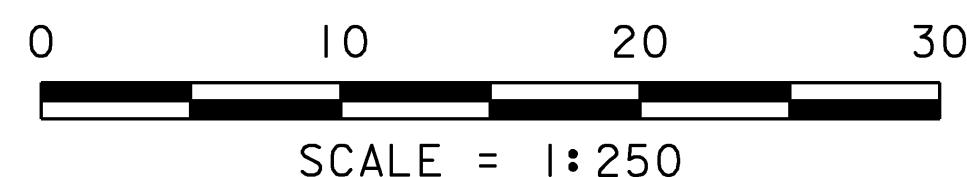
**END ROW PROJECT BRF 2000(2)S**

10+164.70  
EXISTING SIDEWALK SHALL BE REMOVED UNDER ITEM 203.16 "SOLID ROCK EXCAVATION AND REPLACED WITH NEW SIDEWALK RAMP, TYPE 6"



**BEGIN ROW PROJECT BRF 2000(2)S**  
10+057.93 RT.  
26.93M (88.4') RT.  
TYPE 1 (TYP.) CENTERLINE NEW DITCH

TOWN OF BRATTLEBORO



MATCH LINE STA. 10+035 ROW SHEET 15 OF 15

STA. 10+040.000  
END APPROACH  
BEGIN PROJECT

WINCHESTER, RODNEY R. & DOREEN E.

**FOR R.O.W. USE ONLY**

PROJECT NAME: BRATTLEBORO  
PROJECT NUMBER: BRF 2000 (2)S

FILE NAME: 96J228\Str\sj228bdr.dgn  
PROJECT MANAGER: R. R. WHITCOMB  
DESIGNED BY: C. CARLSON  
R.O.W. SHEET 14 OF 15 SHEETS

PLOT DATE: 29-APR-2009  
DRAWN BY: C. MOONEY  
CHECKED BY: D. PETERSON  
SHEET 77 OF 77 SHEETS

R.O.W. LAYOUT SHEET 2