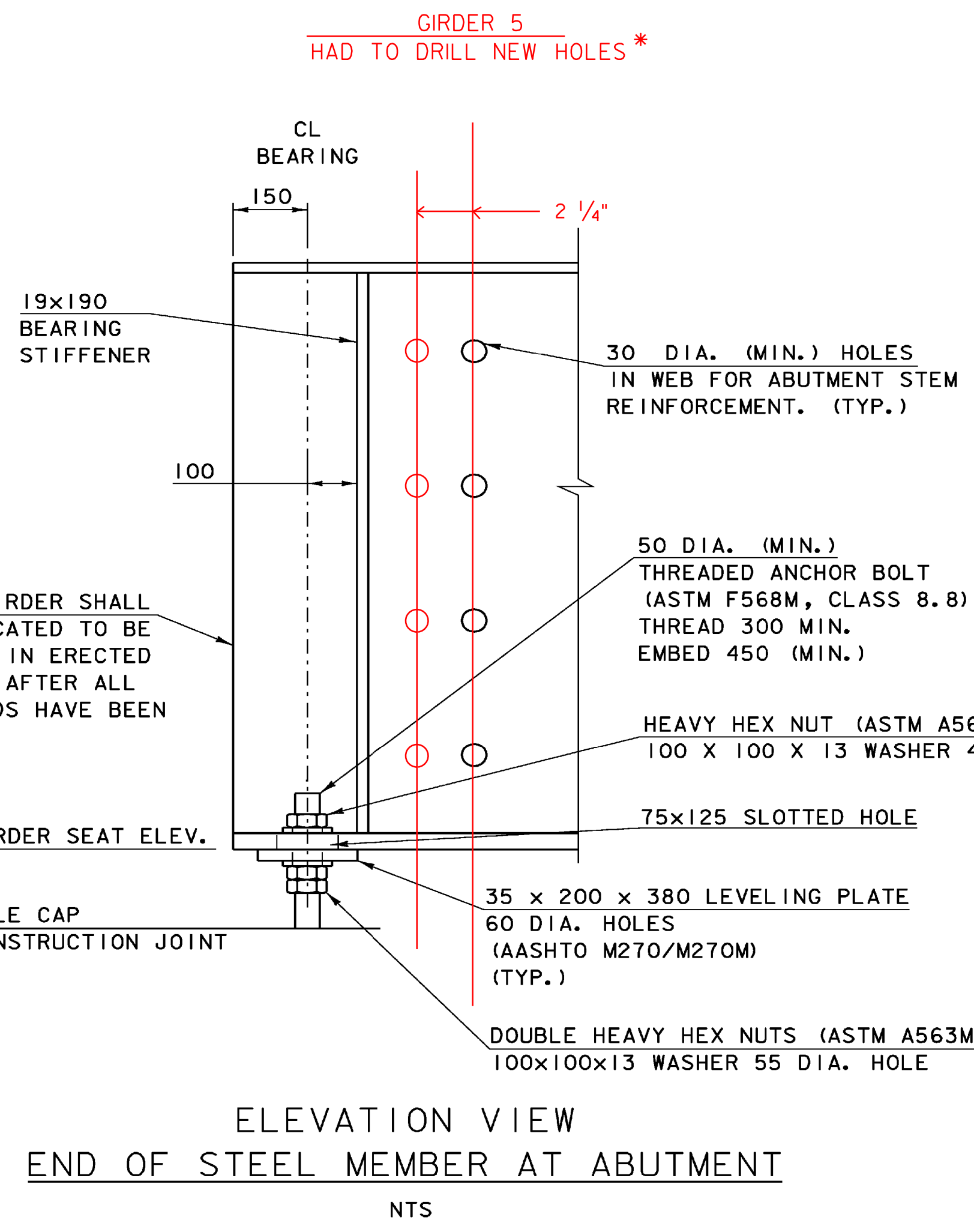


BRIDGE END DETAIL
NTS

BEARING DEVICE ASSEMBLY

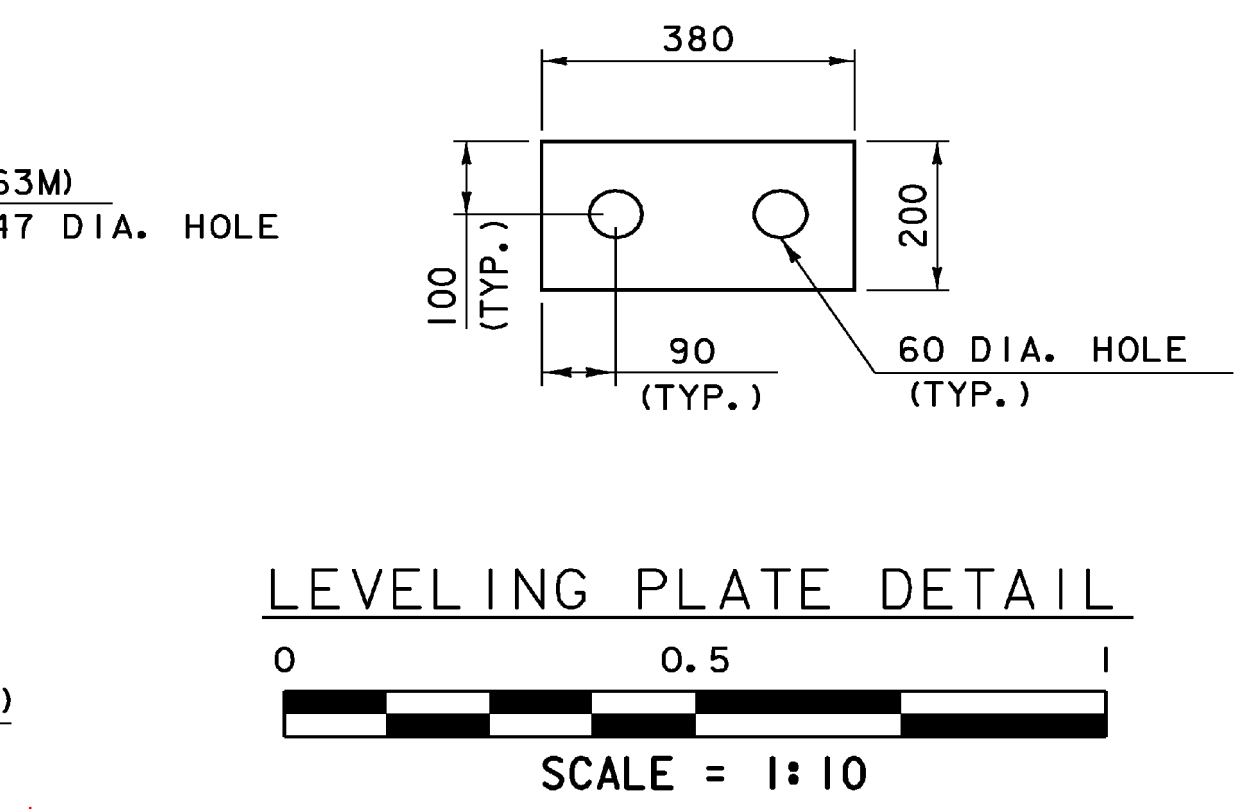
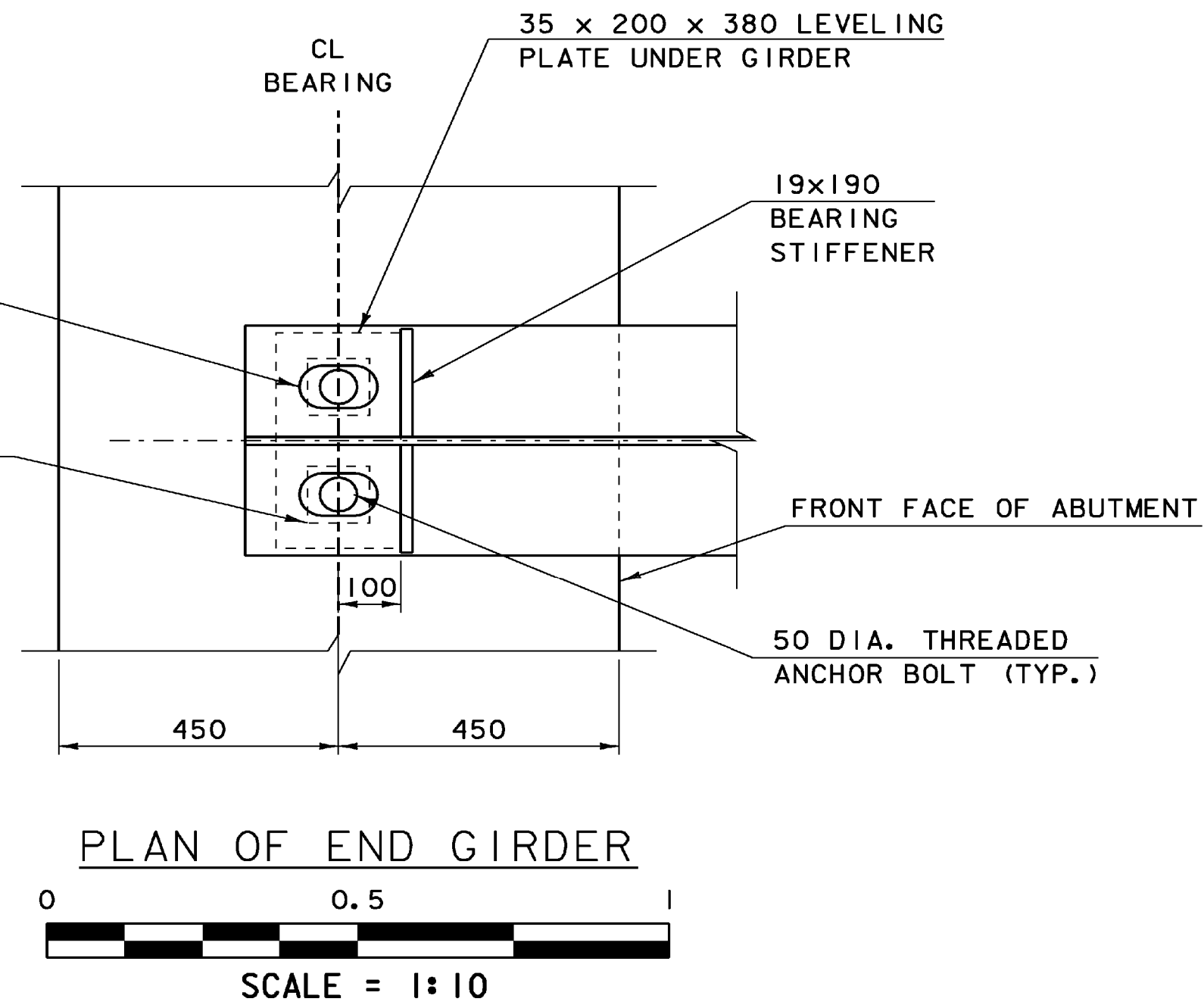
- ALL COMPONENTS OF BEARING ASSEMBLY, INCLUDING ANCHOR BOLTS, NUTS, WASHERS AND LEVELING PLATES SHALL BE PAID FOR UNDER ITEM 506.55, "STRUCTURAL STEEL (PLATE GIRDER)".
- COMPONENTS DO NOT HAVE TO BE GALVANIZED OR METALIZED.



ELEVATION VIEW
END OF STEEL MEMBER AT ABUTMENT
NTS

NOTE:

NF = NEAR FACE
FF = FAR FACE
EF = EACH FACE
▲ = CUT TO FIT IN FIELD
80 CLR. UNLESS OTHERWISE SPECIFIED ON THE PLANS.
660 MIN. LAP LENGTH UNLESS OTHERWISE SPECIFIED ON THE PLANS



* HOLES IN GIRDER 1 WERE OK. GIRDER 5 NEW HOLE LOCATIONS SHOWN. GIRDERS 4,3,2 ALSO HAD NEW HOLES DRILLED. THIS WAS DONE SO HORIZONTAL REBAR RUNNING THROUGH THESE HOLES WOULD BE ON THE INSIDE OF THE VERTICAL REBAR ALREADY POURED INTO THE ABUTMENT. STRUCTURES DIVISION WAS INFORMED.

BRIDGE END DETAILS

PROJECT NAME:	BRATTLEBORO	PLOT DATE:	29-APR-2009
PROJECT NUMBER:	BRF 2000(2)S	DRAWN BY:	D. PETERSON
FILE NAME:	96J228\str\sj228sup.dgn	DESIGNED BY:	C. CARLSON
PROJECT LEADER:	R.R. WHITCOMB	CHECKED BY:	C. CARLSON
sj228bed.l		SHEET 35	OF 77