

**CHANGING ELEVATION OF SEWER MANHOLES**

MAINLINE 10+118.70 LT.  
 DRIVE 20+011.50 RT.  
~~DRIVE 20+024.90 RT.~~

**CAST IRON GRATE WITH FRAME, TYPE D**

MAINLINE 10+076.0 RT.  
 MAINLINE 10+126.0 LT/RT.  
 DRIVE 20+007.8 RT.

**CAST IRON GRATE WITH FRAME, TYPE A-D**

DRIVE 20+007.8 LT.

~~150mm UNDERDRAIN~~

~~MAINLINE 10+040.0 RT. 10+075.6 RT.~~

~~150mm UNDERDRAIN CARRIER PIPE~~

~~600 VERTICAL AT MAINLINE 10+040.0 RT.~~

~~UNDERDRAIN FLUSHING BASIN (FB)~~

~~MAINLINE 10+040.0 RT.~~

UNDERDRAIN WAS ELIMINATED

**ADJUST ELEVATION OF VALVE BOX**

MAINLINE 10+082.6 LT. (WSO) 10+043.5 LT  
 MAINLINE 10+083.3 LT. (WSO)  
 RTE 9 3+048 RT

**RELOCATE HYDRANT**

FROM MAINLINE 10+082.6 LT. TO  
 10+060.00 LT. 10+043.5 LT

**YIELDING MARKER POSTS**

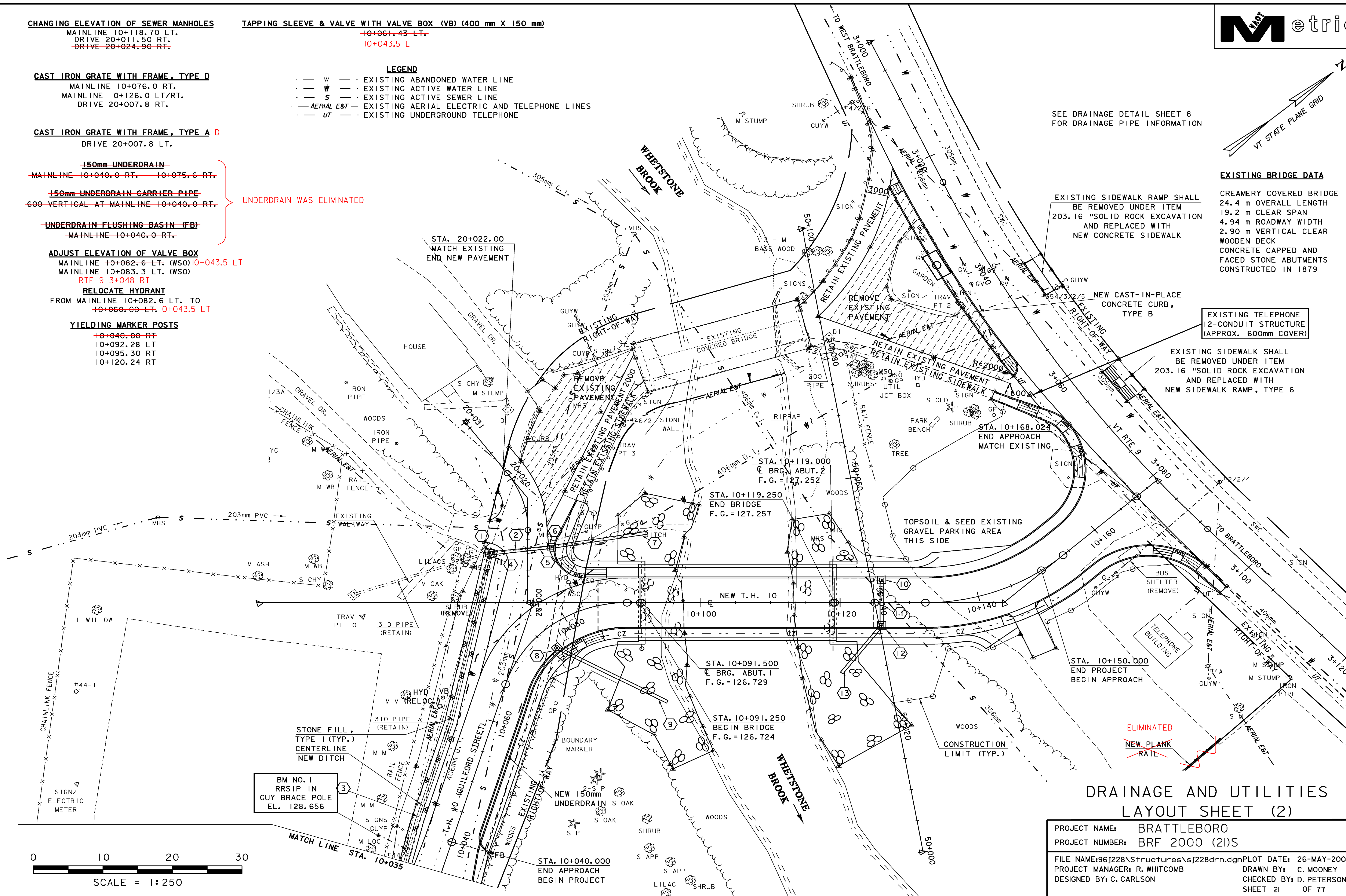
10+040.00 RT  
 10+092.28 LT  
 10+095.30 RT  
 10+120.24 RT

**TAPPING SLEEVE & VALVE WITH VALVE BOX (VB) (400 mm X 150 mm)**

10+061.43 LT.  
 10+043.5 LT

**LEGEND**

- W - - - - - EXISTING ABANDONED WATER LINE
- W - - - - - EXISTING ACTIVE WATER LINE
- S - - - - - EXISTING ACTIVE SEWER LINE
- AERIAL E&T - - - - - EXISTING AERIAL ELECTRIC AND TELEPHONE LINES
- UT - - - - - EXISTING UNDERGROUND TELEPHONE



SEE DRAINAGE DETAIL SHEET 8 FOR DRAINAGE PIPE INFORMATION

**EXISTING BRIDGE DATA**

CREAMERY COVERED BRIDGE  
 24.4 m OVERALL LENGTH  
 19.2 m CLEAR SPAN  
 4.94 m ROADWAY WIDTH  
 2.90 m VERTICAL CLEAR  
 WOODEN DECK  
 CONCRETE CAPPED AND FACED STONE ABUTMENTS  
 CONSTRUCTED IN 1879

EXISTING SIDEWALK RAMP SHALL BE REMOVED UNDER ITEM 203.16 "SOLID ROCK EXCAVATION AND REPLACED WITH NEW CONCRETE SIDEWALK"

NEW CAST-IN-PLACE CONCRETE CURB, TYPE B

EXISTING TELEPHONE 12-CONDUIT STRUCTURE (APPROX. 600mm COVER)

EXISTING SIDEWALK SHALL BE REMOVED UNDER ITEM 203.16 "SOLID ROCK EXCAVATION AND REPLACED WITH NEW SIDEWALK RAMP, TYPE 6"

STA. 10+168.024 END APPROACH MATCH EXISTING

STA. 10+119.000 BRG. ABUT. 2 F.G. = 127.252

STA. 10+119.250 END BRIDGE F.G. = 127.257

STA. 10+091.500 BRG. ABUT. 1 F.G. = 126.729

STA. 10+091.250 BEGIN BRIDGE F.G. = 126.724

STA. 10+150.000 END PROJECT BEGIN APPROACH

**DRAINAGE AND UTILITIES LAYOUT SHEET (2)**

PROJECT NAME:	BRATTLEBORO
PROJECT NUMBER:	BRF 2000 (2)S
FILE NAME:	96J228\structures\j228drn.dgn
PLOT DATE:	26-MAY-2009
PROJECT MANAGER:	R. WHITCOMB
DRAWN BY:	C. MOONEY
DESIGNED BY:	C. CARLSON
CHECKED BY:	D. PETERSON
SHEET	21 OF 77