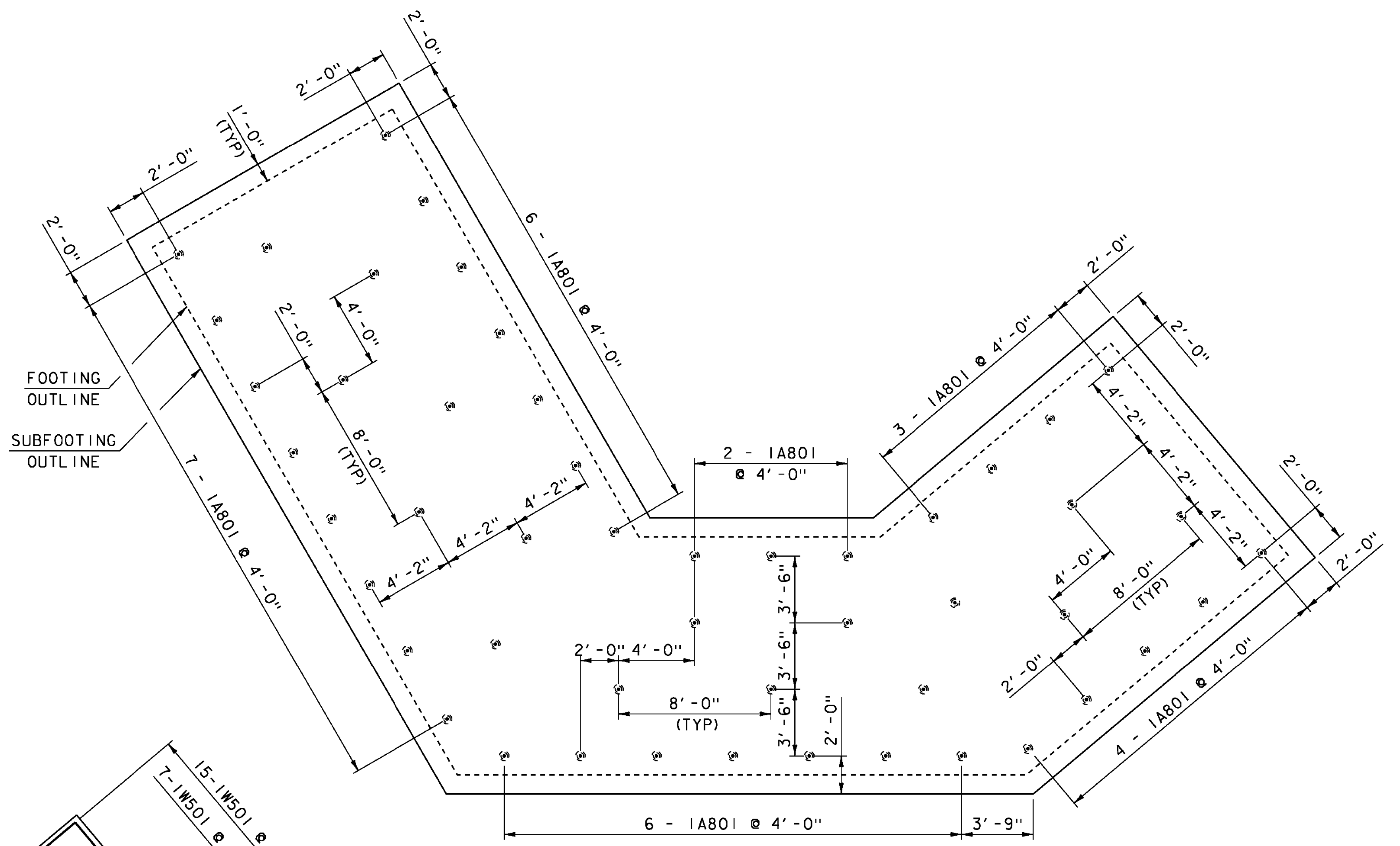


ABUTMENT #1 FOOTING REINFORCING PLAN Δ

SCALE: 1/4" = 1'-0"



ABUTMENT #1 SUBFOOTING REINFORCING PLAN

SCALE: 1/4" = 1'-0"

NOTE:
 NF = NEAR FACE
 FF = FAR FACE
 EF = EACH FACE
 ▲ = CUT TO FIT IN FIELD
 3" CLEAR, UNLESS OTHERWISE SPECIFIED ON THE PLANS.
 2'-2" BAR LAP UNLESS OTHERWISE SPECIFIED ON THE PLANS.

PROJECT NAME:	STAMFORD
PROJECT NUMBER:	STP 1441(29)
FILE NAME:	s96j226sub.dgn
PROJECT LEADER:	C. W. CARLSON
DESIGNED BY:	F. BARROWS
ABUTMENT #1 FOOTING & SUBFOOTING PLAN	
PLOT DATE:	12-AUG-2016
DRAWN BY:	D. KARABEGOVIC
CHECKED BY:	H. SALLS
SHEET	23A OF 44

KEY	DATE	BY	REVISION
Δ	08/12/2016	VAOT	MODIFIED WINGWALL #2.